



CHENMKO ENTERPRISE CO.,LTD

Lead free devices

SINGLE-PHASE GLASS PASSIVATED SILICON BRIDGE RECTIFIER

VOLTAGE RANGE 50 - 1000 Volts CURRENT 2.0 Amperes

**KBP200PT
THRU
KBP2010PT**

FEATURES

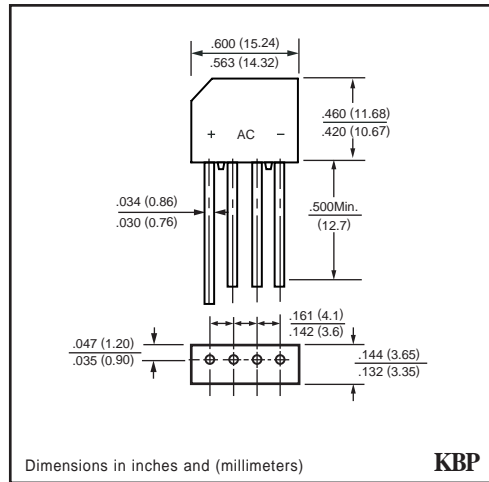
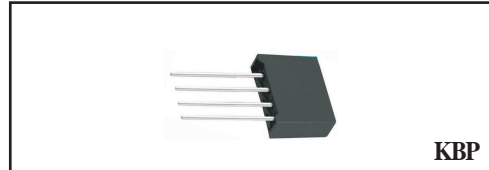
- * Ideal for printed circuit board
- * Surge overload rating - 60 Amperes peak
- * Plastic material used carries Underwriters Laboratory Recognition
- * Exceeds environmental standards of MIL-STD-19500

MECHANICAL DATA

Case: JEDEC KBP molded plastic
Mounting position: Any
Polarity: Polarity symbols marked on body

MAXIMUM RATINGS AND ELECTRICAL CHARACTERISTICS

Ratings at 25°C ambient temperature unless otherwise specified.
Single phase, half wave, 60 Hz, resistive or inductive load.
For capacitive load, derate current by 20%.



MAXIMUM RATINGS (At TA = 25°C unless otherwise noted)

| RATINGS | SYMBOL | KBP200PT | KBP201PT | KBP202PT | KBP204PT | KBP206PT | KBP208PT | KBP2010PT | UNITS |
|---|------------------|-------------|----------|----------|----------|----------|----------|-----------|-------|
| Maximum Recurrent Peak Reverse Voltage | V _{RRM} | 50 | 100 | 200 | 400 | 600 | 800 | 1000 | Volts |
| Maximum RMS Voltage | V _{RMS} | 35 | 70 | 140 | 280 | 420 | 560 | 700 | Volts |
| Maximum DC Blocking Voltage | V _{DC} | 50 | 100 | 200 | 400 | 600 | 800 | 1000 | Volts |
| Maximum Average Forward Rectified Current at TA = 50°C | I _o | 2.0 | | | | | | | Amps |
| Peak Forward Surge Current 8.3 ms single half sine-wave superimposed on rated load (JEDEC method) | I _{FSM} | 60 | | | | | | | Amps |
| Operating Temperature Range | T _J | -55 to +150 | | | | | | | °C |
| Storage Temperature Range | T _{STG} | -55 to +150 | | | | | | | °C |

ELECTRICAL CHARACTERISTICS (At TA = 25°C unless otherwise noted)

| CHARACTERISTICS | SYMBOL | KBP200PT | KBP201PT | KBP202PT | KBP204PT | KBP206PT | KBP208PT | KBP2010PT | UNITS |
|---|----------------|----------|----------|----------|----------|----------|----------|-----------|-------|
| Maximum Instantaneous Forward Voltage at 1.0 A DC | V _F | 1.0 | | | | | | | Volts |
| Maximum Reverse Current at rated | I _R | 10 | | | | | | | uAmps |
| DC blocking Voltage per element | | | | | | | | | mAmps |
| | | 0.2 | | | | | | | |

RATING CHARACTERISTIC CURVES (KBP200PT THRU KBP2010PT)

FIG. 1 - TYPICAL FORWARD CURRENT DERATING CURVE

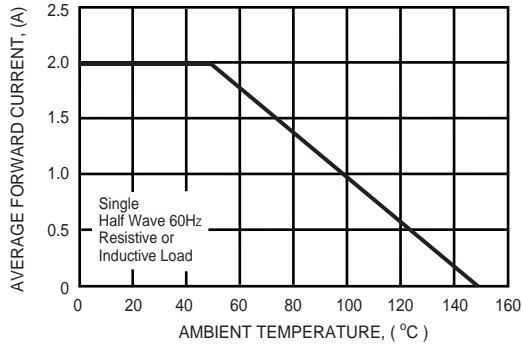


FIG. 2 - MAXIMUM NON-REPETITIVE FORWARD SURGE CURRENT

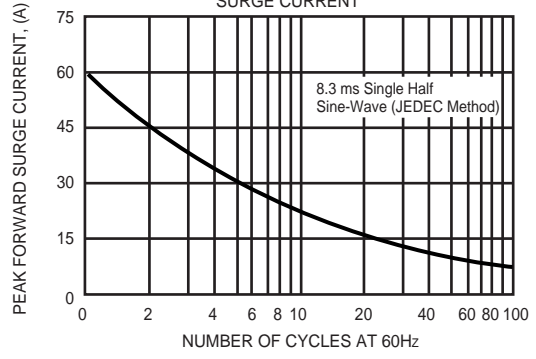


FIG. 3 - TYPICAL INSTANTANEOUS FORWARD CHARACTERISTICS

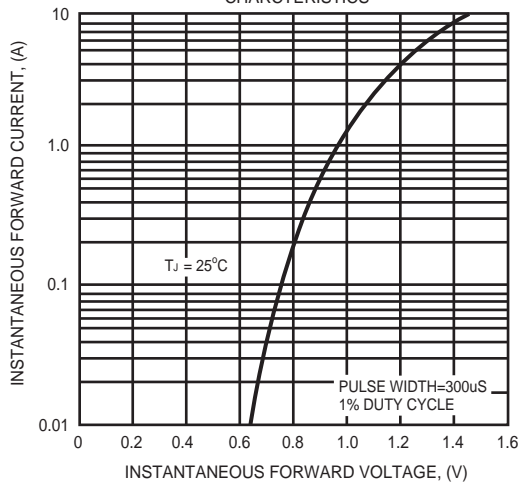


FIG. 4 - TYPICAL REVERSE CHARACTERISTICS

