

### TYPICAL INDICATOR ORDERING EXAMPLE

**KB**    **02**    **K**    **W01**    —    **12**    —    **FF**

**SHAPES**

**Bushing Mounting**

01	Square
02	Round
03	Rectangular

**Snap-in Mounting**

04	Square
05	Round
06	Rectangular

**HOUSING**

K	Black only
---	------------

**TERMINALS**

W01	Silver Solder Lug
-----	-------------------

**LAMPS**

**Incandescent Lamp used w/Solid Cap**

05	5-volt
12	12-volt

**Incandescent or Neon Lamp used with Insert Cap**

05	5-volt
12	12-volt
01	110-volt Neon

**Bright LED used with Cap for LED**

Colors	Resistor		
5C	Red	No Code	No Resistor
5D	Amber	05	5-volt
		12	12-volt
5F	Green	24	24-volt

**Super Bright LED used w/Cap for LED**

6B	White
6F	Green
6G	Blue

**CAP TYPES & COLORS**

**Solid Cap: Lens/Filter Colors**

BB	White/White	FB	Green/White
CB	Red/White	FF	Green/Green
CC	Red/Red	GB	Blue/White
EB	Yellow/White	GG	Blue/Blue

**Insert Cap: Lens/Filter Colors**

JB	Clear/White
JC	Clear/Red
JE	Clear/Yellow
*JF	Clear/Green
*JG	Clear/Blue

\* JF & JG not suitable with neon.

**LED Cap: Lens/Diffuser Colors**

AB	Square Spot Illuminated Black Cap/White Window
JB	Clear/White
JC	Clear/Red
JD	Clear/Amber
JF	Clear/Green

**LED Cap: Lens/Diffuser Colors**

JB	Clear/White
----	-------------

**DESCRIPTION FOR TYPICAL ORDERING EXAMPLE**

**KB02KW01-12-FF**

Black Housing  
Round with Bushing Mounting

Silver Solder Lug Terminals

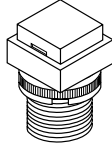


12-volt Incandescent Lamp  
Solid Cap with Green Lens  
and Green Filter

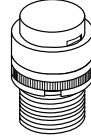
### SHAPES & MOUNTING TYPES

#### Bushing Mounting

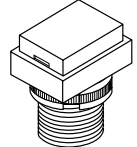
**01** .551" (14mm)  
Square



**02** .551" (14mm)  
Round

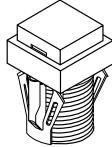


**03** .551" x .728" (14mm x 18.5mm)  
Rectangular

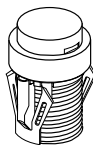


#### Snap-in Mounting

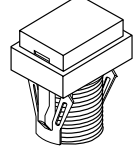
**04** .551" (14mm)  
Square



**05** .551" (14mm)  
Round



**06** .551" x .728" (14mm x 18.5mm)  
Rectangular



The bezel is an integral part of the indicator body.

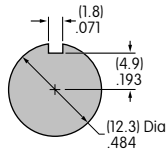
#### Panel Cutouts

##### Bushing Mounting

Without  
Keyway



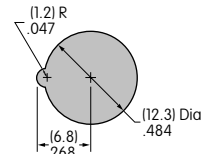
Panel Thickness:  
.020" ~ .315"  
(0.5 ~ 8mm)



With  
Keyway

##### Snap-in Mounting

Panel Thickness:  
.039" ~ .138"  
(1.0 ~ 3.5mm)



### TERMINALS

**W01**

Silver Solder Lug





### LAMP COLORS & SPECIFICATIONS

The electrical specifications shown are determined at a basic temperature of 25°C.


If the source voltage exceeds the rated voltage, a ballast resistor is required.

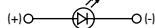
The ballast resistor calculation and more lamp detail are shown in the Supplement section.

#### Incandescent & Neon Lamps

AT611 Incandescent	AT615 Neon		<b>05</b>	<b>12</b>	<b>01</b>	Recommended Resistors for Neon: 33K ohms for 110V AC; 100K ohms for 220V AC	
		Voltage	5V AC	12V AC	110V AC		
		Current	115mA	60mA	1.5mA		
		Endurance	7,000 average		10,000		

#### Bright LED without Resistor

AT635	Red	Amber	Green	No Resistor		
				<b>No Code</b>		
LEDs are colored in OFF state.	<b>5C</b>	<b>5D</b>	<b>5F</b>	Red	Amber	Green
				30mA	30mA	30mA
				20mA	20mA	20mA
				1.9V	2.0V	2.1V
				5V	5V	5V
				0.42mA/°C	0.29mA/°C	0.42mA/°C
				-25° ~ +50°C		




T-1½ Bi-pin

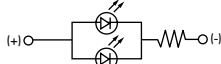
## LAMP COLORS & SPECIFICATIONS

The electrical specifications shown are determined at a basic temperature of 25°C.  
 If the source voltage exceeds the rated voltage, a ballast resistor is required.  
 The ballast resistor calculation and more lamp detail are shown in the Supplement section.

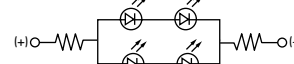
### Bright LED with Resistor

AT634	Red	Amber	Green	Resistor Codes			
	Color Codes:	<b>5C</b>	<b>5D</b>	<b>5F</b>	<b>05</b>	<b>12</b>	<b>24</b>
LEDs are colored in OFF state.							
 T-1 1/4 Bi-pin	Forward Peak Current			$I_{FM}$	—	—	
	Continuous Forward Current			$I_F$	25mA	20mA	10mA
	Forward Voltage			$V_F$	5V	12V	24V
	Reverse Peak Voltage			$V_{RM}$	4V	8V	16V
	Current Reduction Rate Above 25°C			$\Delta I_F$	—	—	—
	Ambient Temperature Range				-25° ~ +50°C		

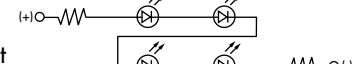
AT634  
5-volt  
2-element  
with 1 Resistor





AT634  
12-volt  
4-element  
with 2 Resistors



AT634  
24-volt  
4-element  
with 2 Resistors



### Super Bright Single Element LED

AT625G Blue AT631B White AT632F Green	 T-1 Bi-pin				6B	6F	6G
		Color	White	Green	Blue		
		Forward Peak Current	$I_{FM}$	30mA	30mA	30mA	
		Continuous Forward Current	$I_F$	20mA	20mA	20mA	
		Forward Voltage	$V_F$	3.6V	3.5V	3.6V	
		Reverse Peak Voltage	$V_{RM}$	5V	5V	5V	
		Current Reduction Rate Above 25°C	$\Delta I_F$	0.50mA/°C	0.50mA/°C	0.50mA/°C	
		Ambient Temperature Range	-25° ~ +50°C				

## CAP TYPES & COLOR COMBINATIONS

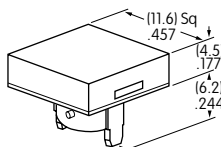
Color Codes:    **B** White    **C** Red    **E** Yellow    **F** Green    **G** Blue    **J** Clear

### Solid Cap for Incandescent Lamp

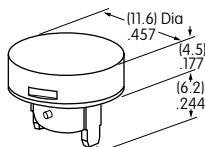
Lens/Filter Colors Available:

<b>BB</b>	<b>FB</b>
<b>CB</b>	<b>FF</b>
<b>CC</b>	<b>GB</b>
<b>EB</b>	<b>GG</b>

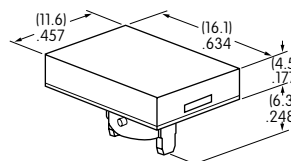
**AT485**  
Square



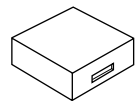
**AT486**  
Round



**AT4021**  
Rectangular



Translucent Colored Lens



Translucent Colored Filter



Material: Polycarbonate    Finish: Glossy

Lamp AT611



## CAP TYPES & COLOR COMBINATIONS

**Color Codes:**    **A** Black    **B** White    **C** Red    **D** Amber    **E** Yellow    **F** Green    **G** Blue    **J** Clear

### Insert Cap for Incandescent or Neon Lamp

Lens/Filter Colors Available:

**JB**

**AT487**  
Square

**AT488**  
Round

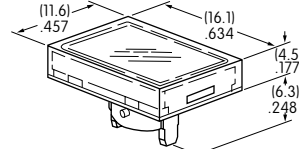
**AT4022**  
Rectangular



Transparent Clear Lens

**JC**

**JE**



Translucent Colored Filter

**JF**

**JG**



JF and JG not suitable with neon lamp.

Material: Polycarbonate    Finish: Glossy

Lamp AT611    Lamp AT615

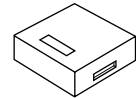
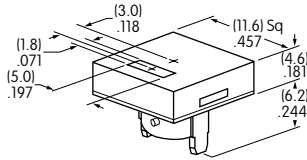
### Spot Illuminated Cap for Bright LED without Resistor or with Resistor

Cap/Window Colors Available:

**AB**

**Opaque Black Cap with Translucent White Window for Spot Illumination**

**AT4051**  
Square



Bright LED  
AT635

Bright LED  
AT634

Material: Polycarbonate    Finish: Matte

### Cap for Bright LED without Resistor or LED with Resistor

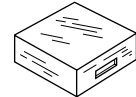
Lens/Diffuser Colors Available: (AT4133, 4132, 4134 white diffusers; AT4158, 4160, 4159 colored diffusers)

**JB**

**AT4133**

**AT4132**

**AT4134**



Transparent Clear Lens

Square

Round

Rectangular

**JC**

**AT4158**

**AT4160**

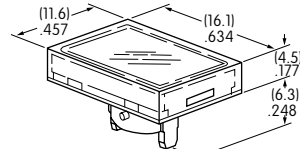
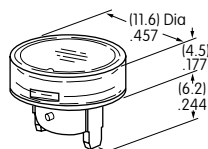
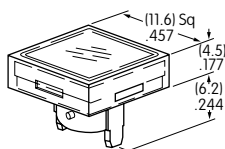
**AT4159**



Translucent Diffuser

**JD**

**JF**



Bright LED  
AT635

Bright LED  
AT634

Material: Polycarbonate    Finish: Glossy

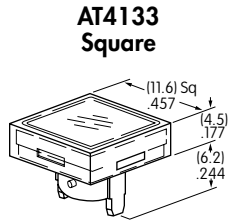
### CAP TYPES & COLOR COMBINATIONS

#### Cap for Super Bright LED

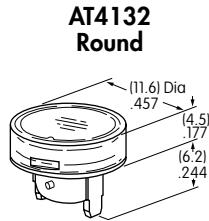
Lens/Diffuser  
Colors Available:

**JB**

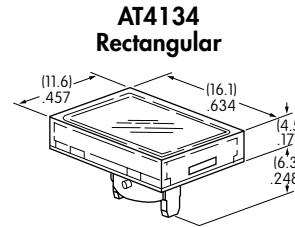
Clear Lens  
White Diffuser



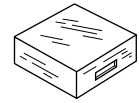
**AT4133**  
Square



**AT4132**  
Round



**AT4134**  
Rectangular



Translucent Clear Lens



Translucent White Diffuser

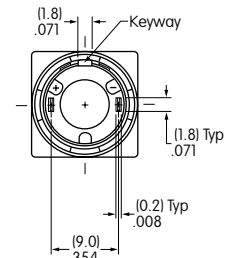
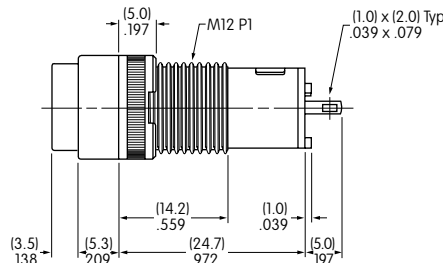
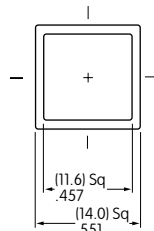
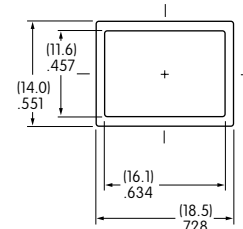
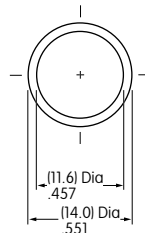


Super Bright LEDs  
AT625, AT631, AT632

Material: Polycarbonate    Finish: Glossy

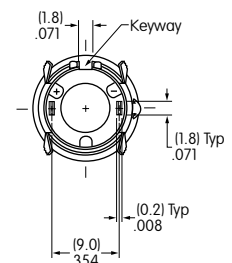
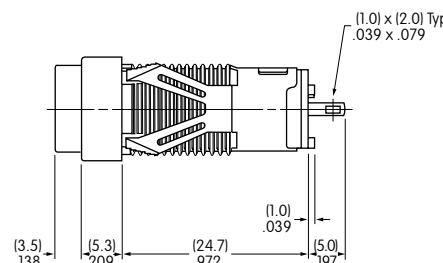
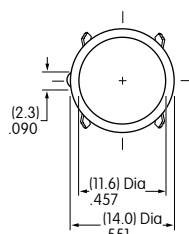
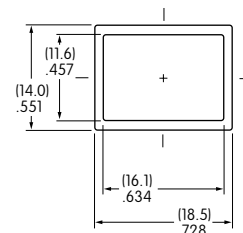
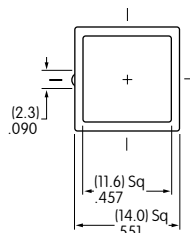
### TYPICAL SWITCH DIMENSIONS

#### Bushing Mount



KB01KW01-05-GG

#### Snap-in Mount



KB05KW01-05-FF