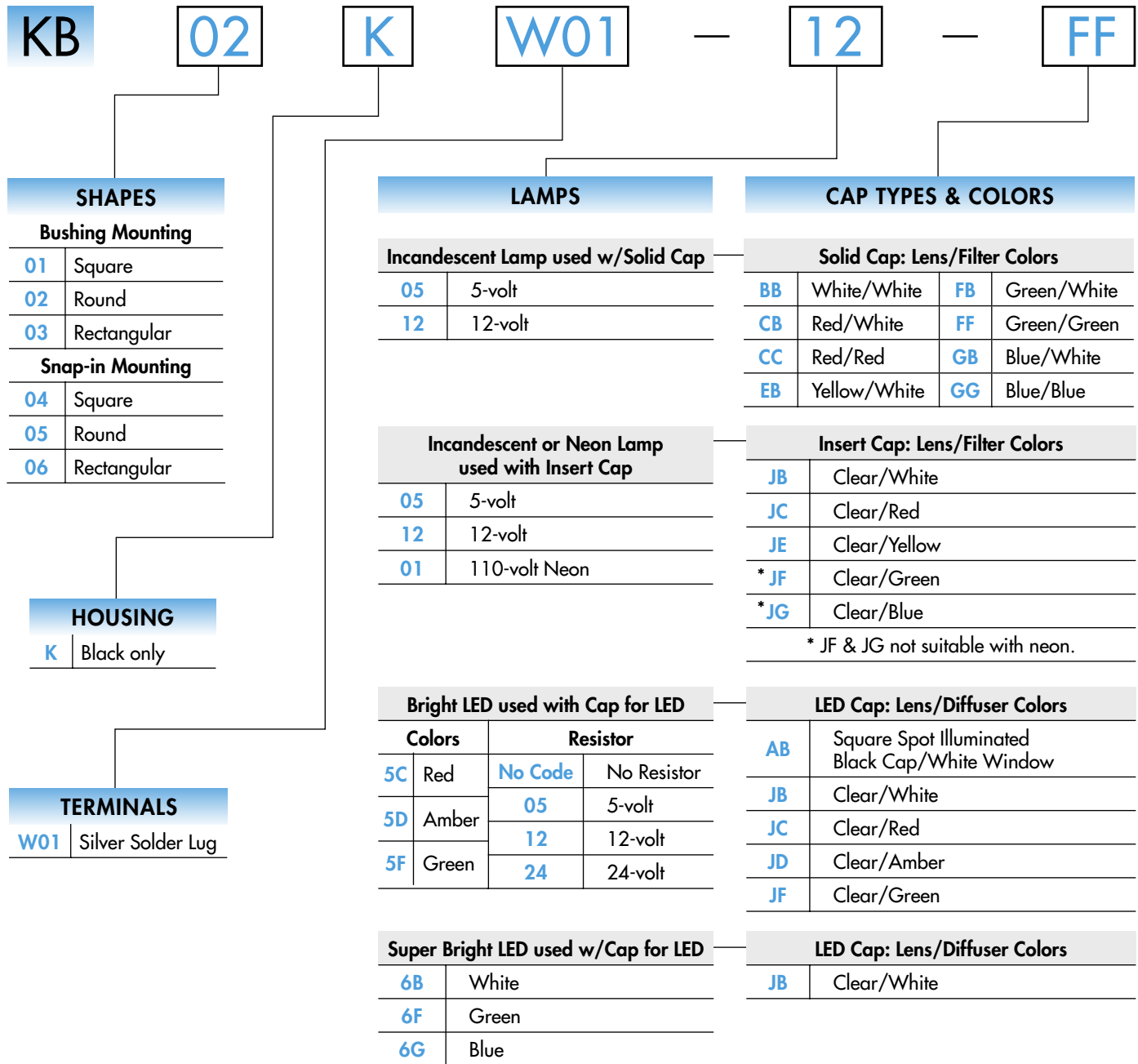


TYPICAL INDICATOR ORDERING EXAMPLE



DESCRIPTION FOR TYPICAL ORDERING EXAMPLE

KB02KW01-12-FF

Black Housing
Round with Bushing Mounting

Silver Solder Lug Terminals

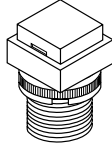


12-volt Incandescent Lamp
Solid Cap with Green Lens
and Green Filter

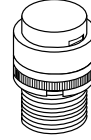
SHAPES & MOUNTING TYPES

Bushing Mounting

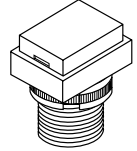
01 .551" (14mm)
Square



02 .551" (14mm)
Round

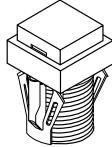


03 .551" x .728" (14mm x 18.5mm)
Rectangular

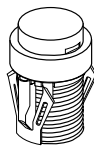


Snap-in Mounting

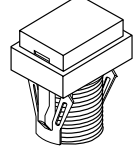
04 .551" (14mm)
Square



05 .551" (14mm)
Round



06 .551" x .728" (14mm x 18.5mm)
Rectangular



The bezel is an integral part of the indicator body.

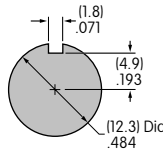
Panel Cutouts

Bushing Mounting

Without
Keyway



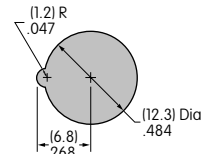
Panel Thickness:
.020" ~ .315"
(0.5 ~ 8mm)



With
Keyway

Snap-in Mounting

Panel Thickness:
.039" ~ .138"
(1.0 ~ 3.5mm)



TERMINALS

W01

Silver Solder Lug





LAMP COLORS & SPECIFICATIONS

The electrical specifications shown are determined at a basic temperature of 25°C.


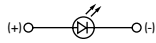
If the source voltage exceeds the rated voltage, a ballast resistor is required.

The ballast resistor calculation and more lamp detail are shown in the Supplement section.

Incandescent & Neon Lamps

AT611 Incandescent	AT615 Neon		05	12	01	Recommended Resistors for Neon: 33K ohms for 110V AC; 100K ohms for 220V AC	
		Voltage	5V AC	12V AC	110V AC		
		Current	115mA	60mA	1.5mA		
		Endurance	7,000 average		10,000		


Bright LED without Resistor

AT635	Red	Amber	Green	No Resistor			
				No Code			
LEDs are colored in OFF state.  	Color Codes	5C	5D	5F	Red	Amber	Green
	Forward Peak Current	I_{FM}			30mA	30mA	30mA
	Continuous Forward Current	I_F			20mA	20mA	20mA
	Forward Voltage	V_F			1.9V	2.0V	2.1V
	Reverse Peak Voltage	V_{RM}			5V	5V	5V
	Current Reduction Rate Above 25°C	ΔI_F			0.42mA/°C	0.29mA/°C	0.42mA/°C
	Ambient Temperature Range				-25° ~ +50°C		

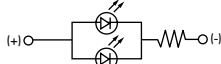
LAMP COLORS & SPECIFICATIONS

The electrical specifications shown are determined at a basic temperature of 25°C.
 If the source voltage exceeds the rated voltage, a ballast resistor is required.
 The ballast resistor calculation and more lamp detail are shown in the Supplement section.

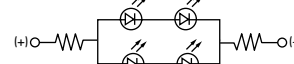
Bright LED with Resistor

AT634	Red	Amber	Green	Resistor Codes			
	Color Codes:	5C	5D	5F	05	12	24
LEDs are colored in OFF state.							
 T-1 1/4 Bi-pin	Forward Peak Current			I_{FM}	—	—	
	Continuous Forward Current			I_F	25mA	20mA	10mA
	Forward Voltage			V_F	5V	12V	24V
	Reverse Peak Voltage			V_{RM}	4V	8V	16V
	Current Reduction Rate Above 25°C			ΔI_F	—	—	—
	Ambient Temperature Range				-25° ~ +50°C		

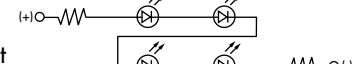
AT634
5-volt
2-element
with 1 Resistor





AT634
12-volt
4-element
with 2 Resistors



AT634
24-volt
4-element
with 2 Resistors



Super Bright Single Element LED

AT625G Blue AT631B White AT632F Green	 T-1 Bi-pin				6B	6F	6G
		Color	White	Green	Blue		
		Forward Peak Current	I_{FM}	30mA	30mA	30mA	
		Continuous Forward Current	I_F	20mA	20mA	20mA	
		Forward Voltage	V_F	3.6V	3.5V	3.6V	
		Reverse Peak Voltage	V_{RM}	5V	5V	5V	
		Current Reduction Rate Above 25°C	ΔI_F	0.50mA/°C	0.50mA/°C	0.50mA/°C	
		Ambient Temperature Range				-25° ~ +50°C	

CAP TYPES & COLOR COMBINATIONS

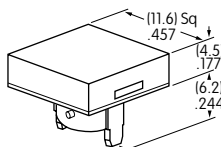
Color Codes: **B** White **C** Red **E** Yellow **F** Green **G** Blue **J** Clear

Solid Cap for Incandescent Lamp

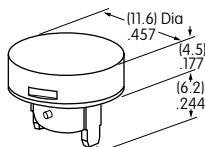
Lens/Filter Colors Available:

BB	FB
CB	FF
CC	GB
EB	GG

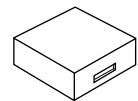
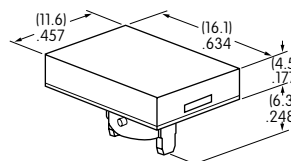
AT485
Square



AT486
Round



AT4021
Rectangular



Translucent Colored Lens



Translucent Colored Filter



Lamp AT611

Material: Polycarbonate Finish: Glossy

CAP TYPES & COLOR COMBINATIONS

Color Codes: **A** Black **B** White **C** Red **D** Amber **E** Yellow **F** Green **G** Blue **J** Clear

Insert Cap for Incandescent or Neon Lamp

Lens/Filter Colors Available:

JB

AT487
Square

AT488
Round

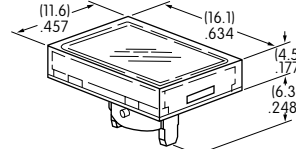
AT4022
Rectangular



Transparent Clear Lens

JC

JE



Translucent Colored Filter

JF

JG



JF and JG not suitable with neon lamp.

Material: Polycarbonate Finish: Glossy

Lamp AT611 Lamp AT615

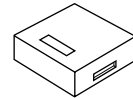
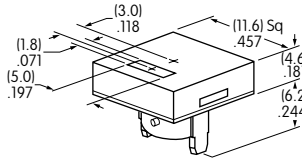
Spot Illuminated Cap for Bright LED without Resistor or with Resistor

Cap/Window Colors Available:

AB

Opaque Black Cap with Translucent White Window for Spot Illumination

AT4051
Square



Bright LED
AT635

Bright LED
AT634

Material: Polycarbonate Finish: Matte

Cap for Bright LED without Resistor or LED with Resistor

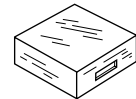
Lens/Diffuser Colors Available: (AT4133, 4132, 4134 white diffusers; AT4158, 4160, 4159 colored diffusers)

JB

AT4133

AT4132

AT4134



Transparent Clear Lens

Square

Round

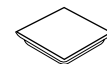
Rectangular

JC

AT4158

AT4160

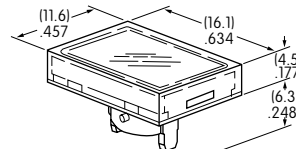
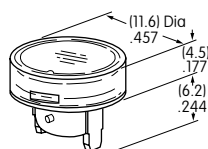
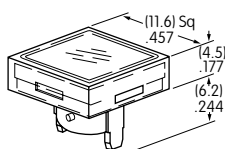
AT4159



Translucent Diffuser

JD

JF



Bright LED
AT635

Bright LED
AT634

Material: Polycarbonate Finish: Glossy

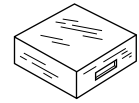
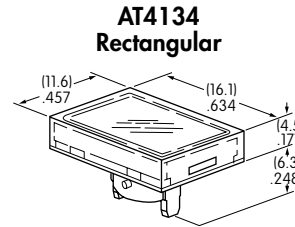
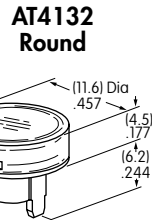
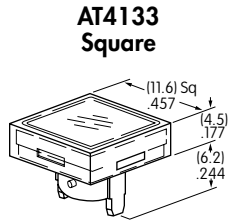
CAP TYPES & COLOR COMBINATIONS

Cap for Super Bright LED

Lens/Diffuser
Colors Available:

JB

Clear Lens
White Diffuser



Translucent Clear Lens



Translucent White Diffuser

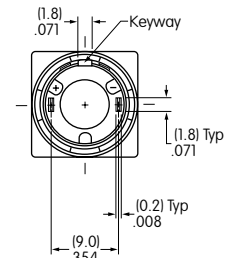
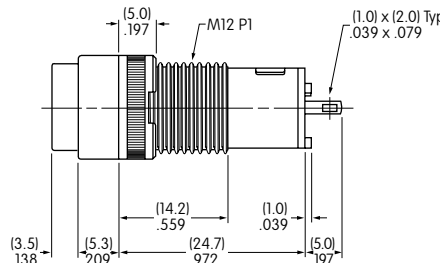
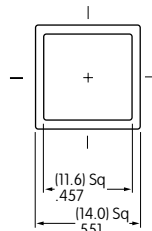
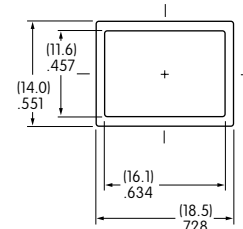
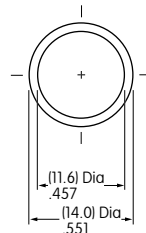


Super Bright LEDs
AT625, AT631, AT632

Material: Polycarbonate Finish: Glossy

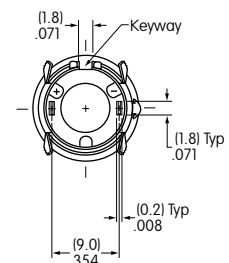
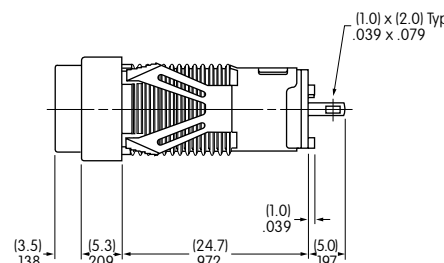
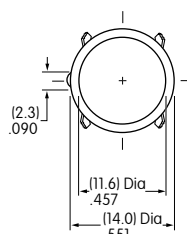
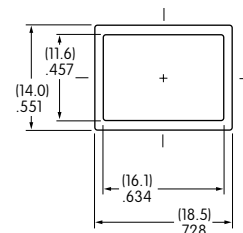
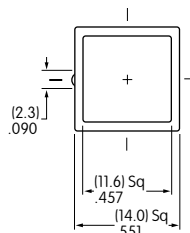
TYPICAL SWITCH DIMENSIONS

Bushing Mount



KB01KW01-05-GG

Snap-in Mount



KB05KW01-05-FF