

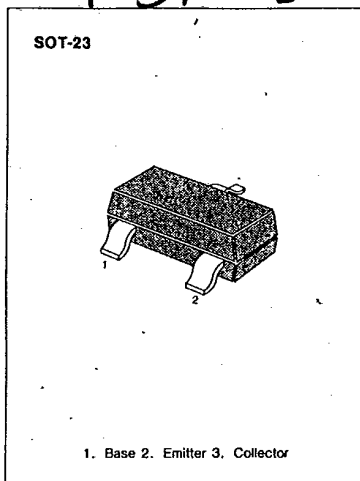
**KSR2110**

**PNP EPITAXIAL SILICON TRANSISTOR**

T-37-13

**SWITCHING APPLICATION (Bias Resistor Built In)**

- Switching Circuit, Inverter, Interface circuit
- Driver circuit
- Built in bias Resistor (R=10KΩ)
- Complement to KSR1110



**ABSOLUTE MAXIMUM RATINGS (T<sub>a</sub>=25°C)**

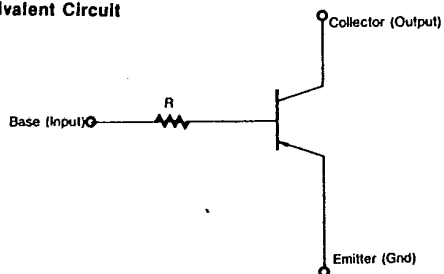
Characteristic	Symbol	Rating	Unit
Collector-Base Voltage	V <sub>CB0</sub>	-40	V
Collector-Emitter Voltage	V <sub>CE0</sub>	-40	V
Emitter-Base Voltage	V <sub>EB0</sub>	-5	V
Collector Current	I <sub>C</sub>	-100	mA
Collector Dissipation	P <sub>C</sub>	200	mW
Junction Temperature	T <sub>J</sub>	150	°C
Storage Temperature	T <sub>stg</sub>	-55 ~ 150	°C

3

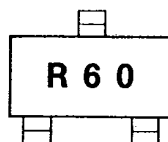
**ELECTRICAL CHARACTERISTICS (T<sub>a</sub>=25°C)**

Characteristic	Symbol	Test Condition	Min	Typ	Max	Unit
Collector-Base Breakdown Voltage	BV <sub>CB0</sub>	I <sub>C</sub> = -100μA, I <sub>E</sub> = 0	-40			V
Collector-Emitter Breakdown Voltage	BV <sub>CE0</sub>	I <sub>E</sub> = -1mA, I <sub>B</sub> = 0	-40			V
Collector Cutoff Current	I <sub>CB0</sub>	V <sub>CB</sub> = -30V, I <sub>E</sub> = 0			-0.1	μA
DC Current Gain	h <sub>FE</sub>	V <sub>CE</sub> = -5V, I <sub>C</sub> = -1mA	100		600	
Collector-Emitter Saturation Voltage	V <sub>CE(sat)</sub>	I <sub>C</sub> = -10mA, I <sub>B</sub> = -1mA			0.3	V
Output Capacitance	C <sub>ob</sub>	V <sub>CB</sub> = -10V, I <sub>E</sub> = 0 f = 1MHz		5.5		pF
Current Gain-Bandwidth Product	f <sub>T</sub>	V <sub>CE</sub> = -10V, I <sub>C</sub> = -5mA		200		MHz
Input Resistor	R		7	10	13	KΩ

**Equivalent Circuit**



**Marking**

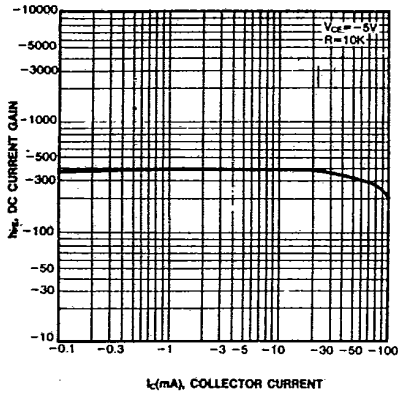


**KSR2110**

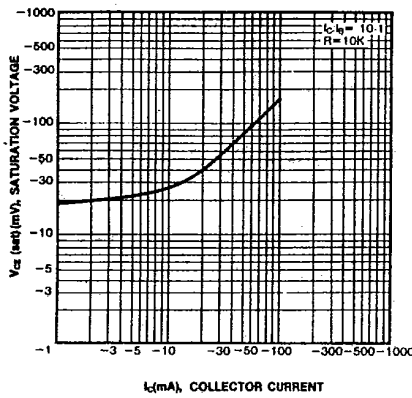
**PNP EPTAXIAL SILICON TRANSISTOR**

T-37-13

DC CURRENT GAIN



COLLECTOR-EMITTER SATURATION VOLTAGE



POWER DERATING

