

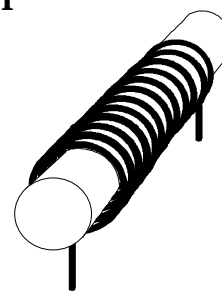
Slug Inductors -- Ferrite & Iron Powder

Applications include: Hash filters • RF circuits

Attenuating EMI • Filters for Switching Regulators

SCR/TRIAC control circuits • Power Supplies

Custom designs available including other electrical values and packaging options such as shrink tube sleeving etc.



Electrical Specifications at 25°C

Ferrite Part Number	L (μH)	I max.	DCR	Length	Body Dia.	Leads
	Typ. (No DC)	(250 CM/A) Amps.	Ω TYP.	A (in.)	B (in.)	C (in.)
L-13200	10.00	10	0.016	1.0	0.590	0.052
L-13201	20.00	11	0.017	1.0	0.590	0.052
L-13202	30.00	11	0.021	1.0	0.590	0.052
L-13203	50.00	7	0.043	1.0	0.550	0.041
L-13204	100.00	6	0.086	1.0	0.550	0.033
L-13205	150.00	5	0.107	1.0	0.600	0.033
L-13206	200.00	4	0.140	1.0	0.600	0.033
L-13207	250.00	4	0.184	1.0	0.600	0.033
L-13208	100.00	8	0.061	1.5	0.590	0.052
L-13209	200.00	6	0.110	1.5	0.550	0.041
L-13210	300.00	5	0.140	1.5	0.550	0.033
L-13211	400.00	4	0.167	1.5	0.600	0.033
L-13212	500.00	4	0.192	1.5	0.600	0.033
L-13213	600.00	4	0.237	1.5	0.600	0.033
L-13214	700.00	4	0.257	1.5	0.600	0.033
L-13215	800.00	4	0.291	1.5	0.600	0.033

Electrical Specifications at 25°C

Iron Powder Part Number	L (μH)	I max.	DCR	Length	Body Dia.	Leads
	Typ. (No DC)	(250 CM/A) Amps.	Ω TYP.	A (in.)	B (in.)	C (in.)
L-13250	1.00	10	0.016	1.0	0.590	0.052
L-13251	2.00	11	0.017	1.0	0.590	0.052
L-13252	3.00	11	0.021	1.0	0.590	0.052
L-13253	5.00	7	0.043	1.0	0.550	0.041
L-13254	5.50	6	0.086	1.0	0.550	0.033
L-13255	6.00	5	0.107	1.0	0.600	0.033
L-13256	7.00	4	0.140	1.0	0.600	0.033
L-13257	8.00	4	0.184	1.0	0.600	0.033
L-13258	8.00	8	0.061	1.5	0.590	0.052
L-13259	13.00	6	0.110	1.5	0.550	0.041
L-13260	14.50	5	0.140	1.5	0.550	0.033
L-13261	16.00	4	0.167	1.5	0.600	0.033
L-13262	17.00	4	0.192	1.5	0.600	0.033
L-13263	18.00	4	0.237	1.5	0.600	0.033
L-13264	19.00	4	0.257	1.5	0.600	0.033
L-13265	20.00	4	0.291	1.5	0.600	0.033

Specifications are subject to change without notice

SLUG - 5/00