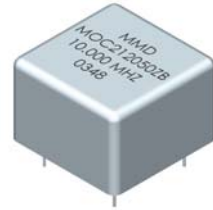


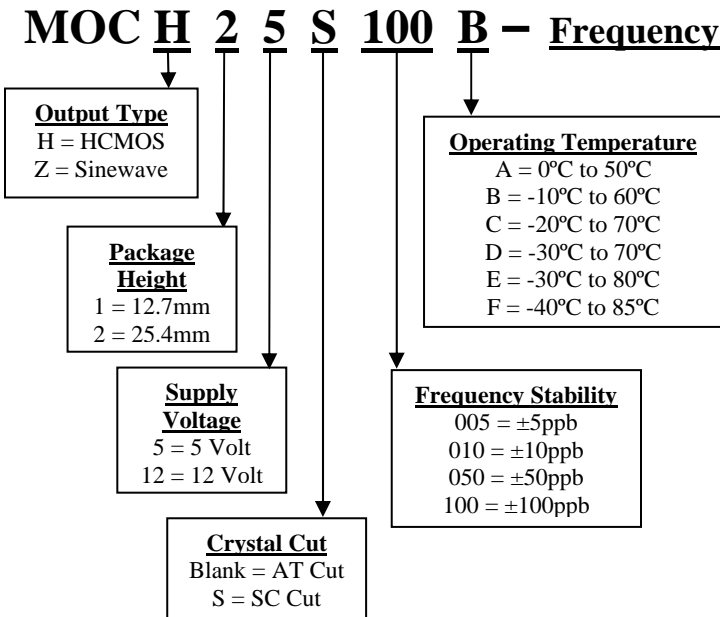
MOCH and MOCZ Series / 1.5" Square, 4 pin OCXO



- Oven Controlled Oscillator
- 500 KHz to 150.0 MHz Available
- SC Crystal
- -40°C to 85° Available
- ±5ppb to ±500ppb



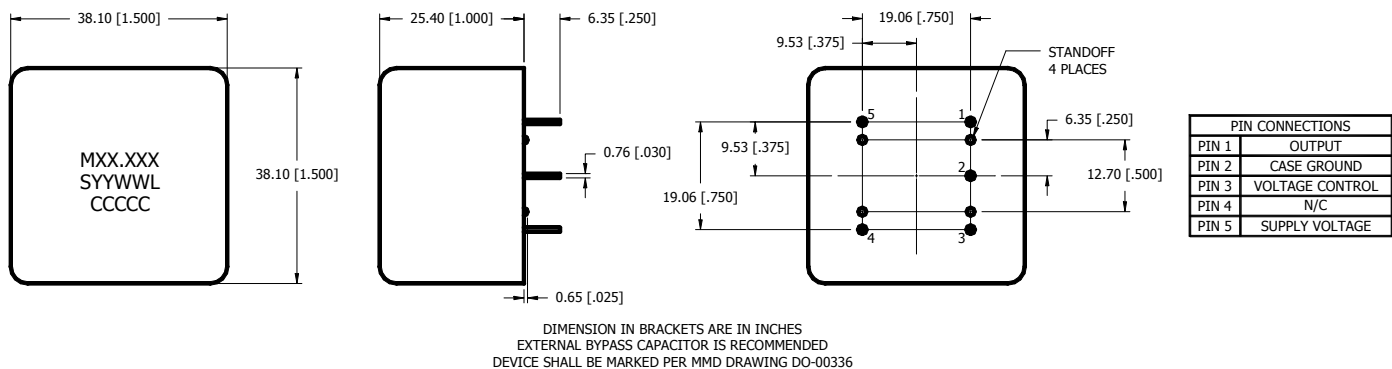
PART NUMBERING GUIDE:



ELECTRICAL SPECIFICATIONS:

Frequency Range		500.0KHz to150.0MHz	
Frequency Stability		±5ppb to ±500ppb	
Operating Temperature		-40°C to 85°C max*	
* All stabilities not available, please consult MMD for availability.			
Storage Temperature		-40°C to 95°C	
Output	Sinewave	±3 dBm	50Ω
	HCMOS	10% Vdd max 90% Vdd min	30pF
Supply Voltage (Vdd)		5.0V	12.0V
Supply Current	typ	85mA	70mA
	max	550mA	335mA
Warm-up Time		8min. @ 25°C	
Vc Input Impedance		100K Ohms typical	
Crystal		AT or SC Cut options	
Phase Noise @ 30MHZ		SC	AT
100 Hz Offset		-125dBc	Call MMD
1000 Hz Offset		-140dBc	Call MMD
10K Hz Offset		-145dBc	Call MMD
Voltage Control 0 to VCC		±3ppm typ.	±10ppm typ.
Aging (after 30 days)		±0.1ppm/yr.	±1.0ppm/yr.

MECHANICAL DETAILS:



MMD Components, 30400 Esperanza, Rancho Santa Margarita, CA, 92688
 Phone: (949) 709-5075, Fax: (949) 709-3536, www.mmdcomponents.com
Sales@mmdcomp.com