

NAIS

HIGHLY RELIABLE
DIN SIZE
LIMIT SWITCHES

AZ55 Limit Switches



- Design conforms to DIN size
Mounting distance and dimensions: DIN43694
Screw hole for conduit: DIN40430 Pg13.5
- Utilizes the same basic switch as the AZ5 series

PRODUCT TYPE

| Actuator | Part No. |
|-----------------------|----------|
| Plunger | AZ5501 |
| Roller plunger | AZ5502 |
| Flexible rod | AZ5506 |
| Roller arm | AZ5524 |
| Adjustable rod | AZ5527 |
| Adjustable roller arm | AZ5528 |

SPECIFICATIONS

Rating

| Rated control voltage | | 125V AC | 250V AC | 115V DC |
|-------------------------------------|--------------|---------|---------|---------|
| Resistive load ($\cos\phi = 1$) | | 10A | 6A | 0.8A |
| Inductive load ($\cos\phi = 0.4$) | | 6A | 4A | 0.1A |
| Motor or lamp load | N.C. contact | 4A | 2.5A | 0.1A |
| | N.O. contact | 2A | 1.2A | 0.1A |

Characteristics

| | | | | |
|--|---|---|--|--|
| Contact arrangement | 1 Form Z | | | |
| Initial contact resistance, max. | 25m Ω | | | |
| Initial insulation resistance (At 500V DC) | Min. 100M Ω | | | |
| Initial breakdown voltage | 1,000Vrms for 1 min 1,500Vrms for 1 min 1,500Vrms for 1 min | Between terminals Between dead metal parts and each terminal Between ground and each terminal | | |
| Shock resistance | Max. 30G | | | |
| Vibration resistance | 55Hz, double amplitude of 1.5mm | | | |
| Expected life (Min. operations) | Mechanical | 10 ⁷ (at 50 cpm) | | |
| | Electrical | 5x10 ⁵ (at 20 cpm, rated load) | | |
| Ambient temperature | +5 to +80°C +41 to +176°F | | | |
| Ambient humidity | Max. 95%R.H. | | | |

Operating Characteristics

| Actuator | Operating Force (O.F.), max. (g oz) | Release Force (R.F.), min. (g oz) | Pretravel (P.F.), max. (mm inch) | Movement Differential (M.D.), max. (mm inch) | Overtravel (O.T.), min. (mm inch) |
|-------------------------------------|-------------------------------------|-----------------------------------|----------------------------------|--|-----------------------------------|
| Plunger | 2,720 95.95 | 910 32.10 | 1.7 .067 | 1.0 .039 | 6.4 .252 |
| Roller plunger | 2,720 95.95 | 910 32.10 | 1.7 .067 | 1.0 .039 | 5.6 .220 |
| Flexible rod ¹⁾ | 142 5.01 | — | 29 1.142 | — | — |
| Roller arm | 900 31.75 | 50 1.76 | 18° to 25° | 15° | 60° |
| Adjustable rod ²⁾ | 244 8.61 | 14 .49 | 18° to 25° | 15° | 60° |
| Adjustable roller arm ³⁾ | 900 31.75 | 50 1.76 | 18° to 25° | 15° | 60° |

- Notes: 1) Characteristics measured at the top of rod.
 2) Characteristics measured at the center distance of 141mm 5.551 inch.
 3) Characteristics measured at the center distance of 38.1mm 1.500 inch.

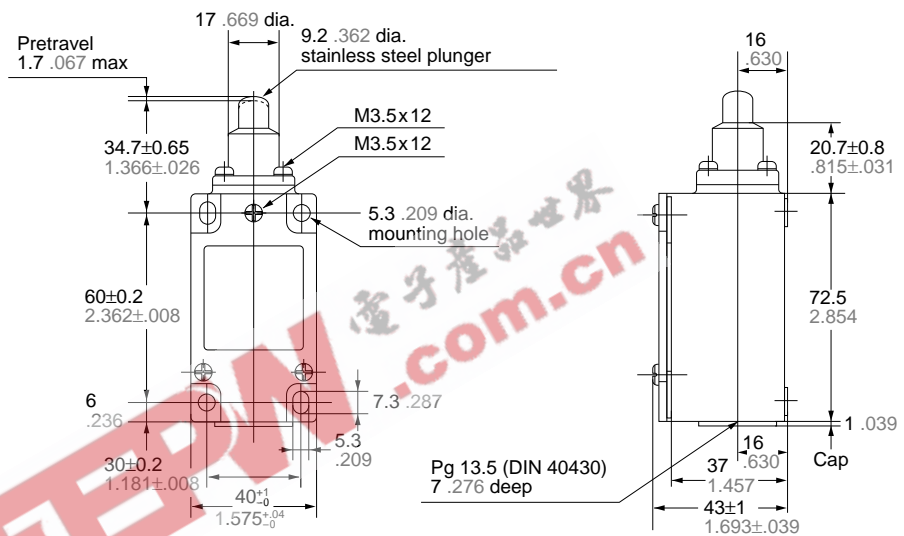
DIMENSIONS

mm inch

• Plunger type



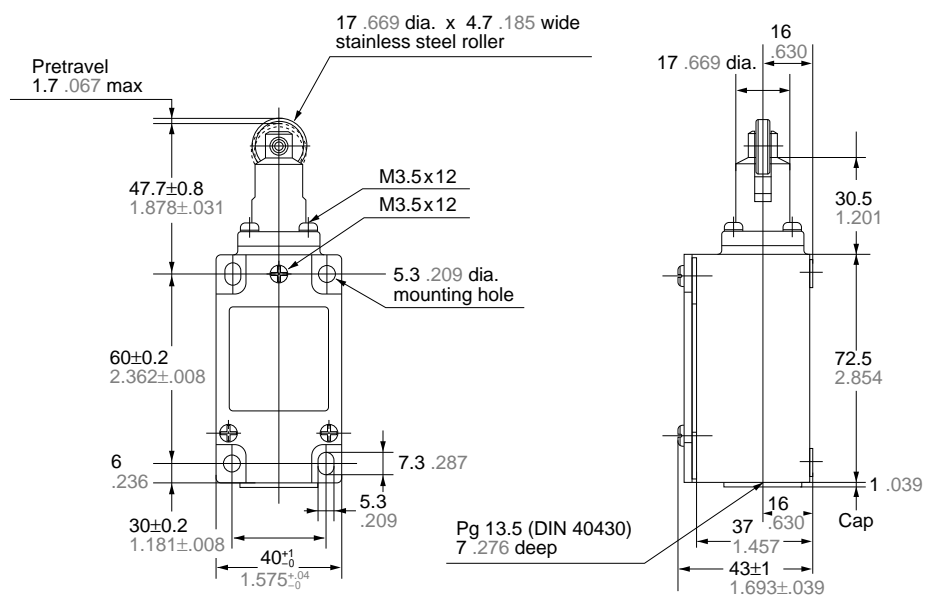
AZ5501



• Roller plunger type



AZ5502



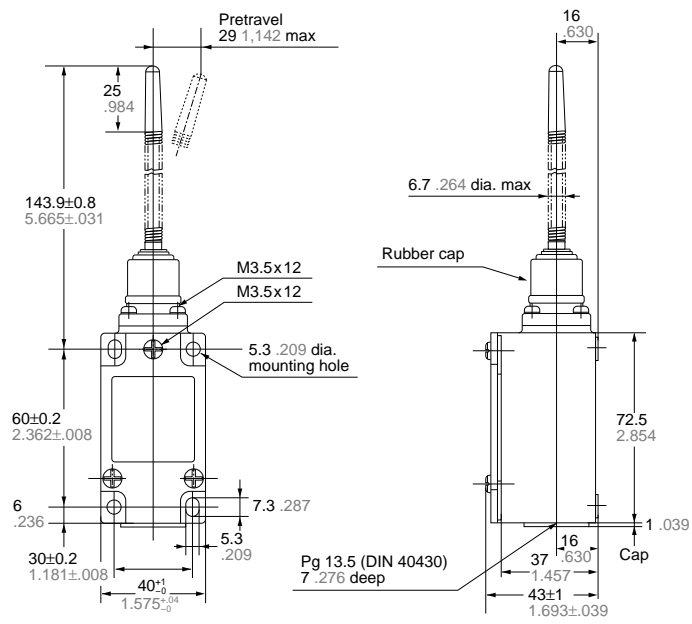
General tolerance: ±0.4 ±.016

AZ55

• Flexible rod type

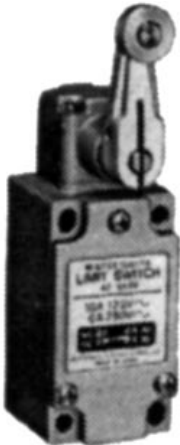


AZ5506

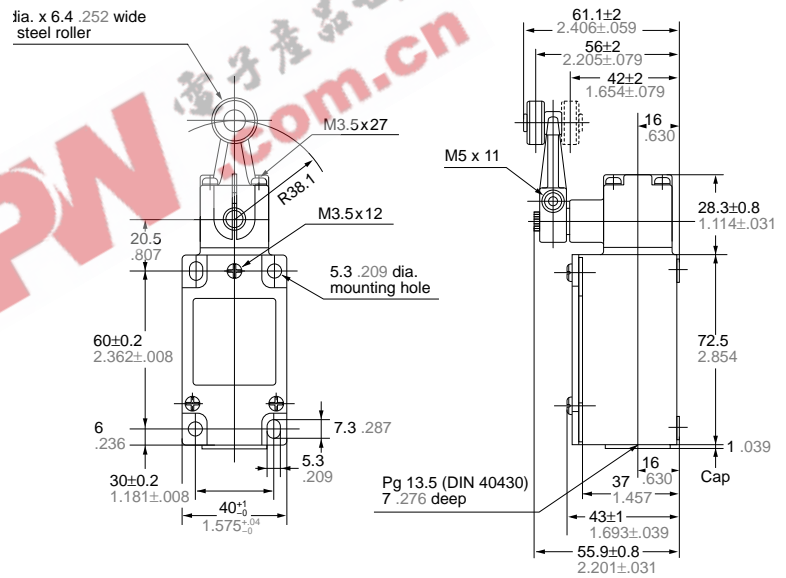


mm inch

• Roller arm type



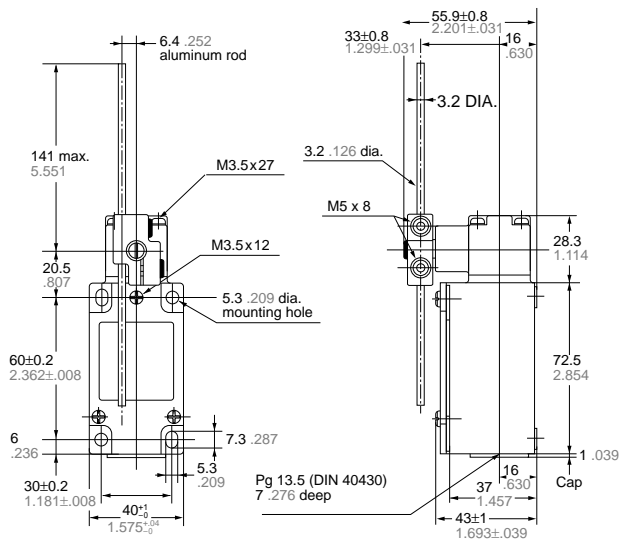
AZ5524



• Adjustable rod type



AZ5527



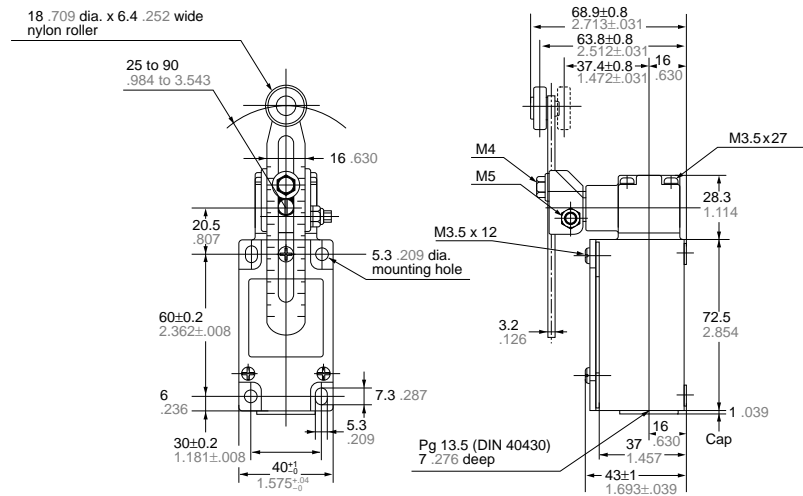
General tolerance:
±0.4 ±.016

• Adjustable roller arm type

mm inch



AZ5528

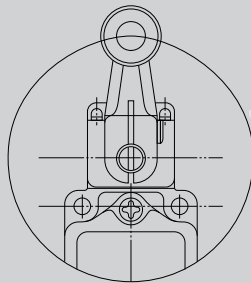


General tolerance: ±0.4 ±.016

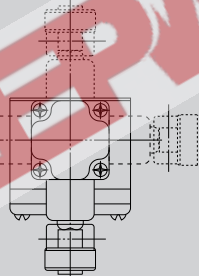
ADJUSTING METHOD

Adjustable roller

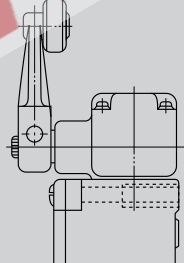
1) A rotary actuator can be set and locked in any



2) An actuator head may be moved in 90° increments to any of four directions, by removing the four head screws.

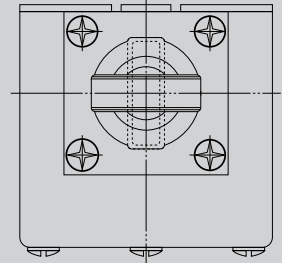


3) A roller lever may be faced in or out.



Adjustable head

An actuator may be moved in 90° increments by removing the four actuator screws.



DIN STANDARDS

1. Mounting distance and dimensions meet DIN43694.
2. Protective construction meets IEC IP65, but insulation distance and terminal construction do not meet VDE standards.
3. Operating position of AZ5501 and AZ5502 meet DIN43694.
4. There are no DIN standards specified for the operating position of AZ5506 and AZ5528. Only mounting distance and dimensions meet DIN43694.