

CD4016BM/CD4016BC Quad Bilateral Switch

General Description

The CD4016BM/CD4016BC is a quad bilateral switch intended for the transmission or multiplexing of analog or digital signals. It is pin-for-pin compatible with CD4066BM/CD4066BC.

Features

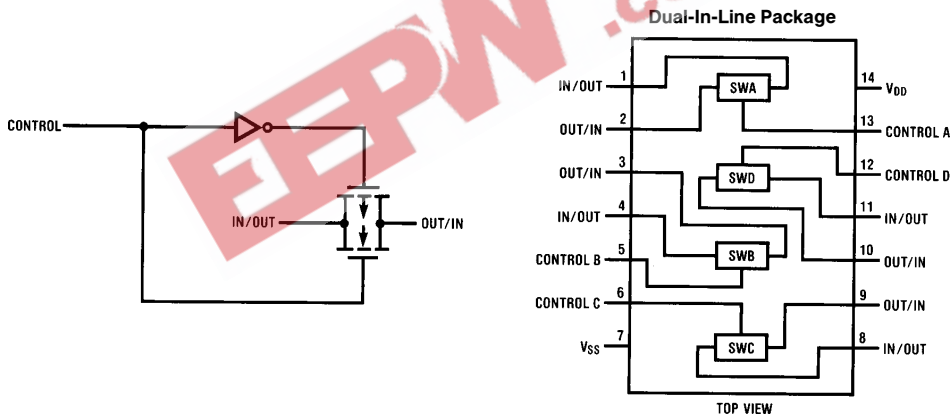
- Wide supply voltage range 3V to 15V
- Wide range of digital and analog switching $\pm 7.5 V_{PEAK}$
- "ON" resistance for 15V operation 400 Ω (typ.)
- Matched "ON" resistance over 15V signal input $\Delta R_{ON} = 10\Omega$ (typ.)
- High degree of linearity 0.4% distortion (typ.)
@ $f_{IS} = 1 \text{ kHz}$, $V_{IS} = 5 V_{p-p}$,
 $V_{DD} - V_{SS} = 10V$, $R_L = 10 \text{ k}\Omega$
- Extremely low "OFF" switch leakage 0.1 nA (typ.)
@ $V_{DD} - V_{SS} = 10V$
 $T_A = 25^\circ\text{C}$

- Extremely high control input impedance 10¹² Ω (typ.)
- Low crosstalk between switches -50 dB (typ.)
@ $f_{IS} = 0.9 \text{ MHz}$, $R_L = 1 \text{ k}\Omega$
- Frequency response, switch "ON" 40 MHz (typ.)

Applications

- Analog signal switching/multiplexing
 - Signal gating
 - Squelch control
 - Chopper
 - Modulator/Demodulator
 - Commutating switch
- Digital signal switching/multiplexing
- CMOS logic implementation
- Analog-to-digital/digital-to-analog conversion
- Digital control of frequency, impedance, phase, and analog-signal gain

Schematic and Connection Diagrams



Order Number CD4016B

TL/F/5661-1

Absolute Maximum Ratings

If Military/Aerospace specified devices are required, please contact the National Semiconductor Sales Office/Distributors for availability and specifications.

(Notes 1 and 2)

V _{DD} Supply Voltage	−0.5V to +18V
V _{IN} Input Voltage	−0.5V to V _{DD} + 0.5V
T _S Storage Temperature Range	−65°C to +150°C
Power Dissipation (P _D)	
Dual-In-Line	700 mW
Small Outline	500 mW
Lead Temperature (Soldering, 10 seconds)	260°C

Recommended Operating Conditions (Note 2)

V _{DD} Supply Voltage	3V to 15V
V _{IN} Input Voltage	0V to V _{DD}
T _A Operating Temperature Range	
CD4016BM	−55°C to +125°C
CD4016BC	−40°C to +85°C

DC Electrical Characteristics CD4016BM (Note 2)

Symbol	Parameter	Conditions	−55°C		25°C			125°C		Units
			Min	Max	Min	Typ	Max	Min	Max	
I _{DD}	Quiescent Device Current	V _{DD} = 5V, V _{IN} = V _{DD} or V _{SS}		0.25		0.01	0.25		7.5	μA
		V _{DD} = 10V, V _{IN} = V _{DD} or V _{SS}		0.5		0.01	0.5		15	μA
		V _{DD} = 15V, V _{IN} = V _{DD} or V _{SS}		1.0		0.01	1.0		30	μA
Signal Inputs and Outputs										
R _{ON}	“ON” Resistance	R _L = 10 kΩ to $\frac{V_{DD}-V_{SS}}{2}$ V _C = V _{DD} , V _{IS} = V _{SS} or V _{DD} V _{DD} = 10V		600		250	660		960	Ω
		V _{DD} = 15V		360		200	400		600	Ω
ΔR _{ON}	Δ“ON” Resistance Between any 2 of 4 Switches (In Same Package)	R _L = 10 kΩ to $\frac{V_{DD}-V_{SS}}{2}$ V _C = V _{DD} , V _{IS} = V _{SS} to V _{DD} V _{DD} = 10V				15				Ω
		V _{DD} = 15V				10				Ω
I _{IS}	Input or Output Leakage Switch “OFF”	V _C = 0, V _{DD} = 15V		±50		±0.1	±50		±500	nA
		V _{IS} = 15V and 0V, V _{OS} = 0V and 15V								
Control Inputs										
V _{ILC}	Low Level Input Voltage	V _{IS} = V _{SS} and V _{DD} V _{OS} = V _{DD} and V _{SS} I _{IS} = ±10 μA								
		V _{DD} = 5V		0.9			0.7		0.5	V
		V _{DD} = 10V		0.9			0.7		0.5	V
		V _{DD} = 15V		0.9			0.7		0.5	V
V _{IHC}	High Level Input Voltage	V _{DD} = 5V	3.5		3.5			3.5		V
		V _{DD} = 10V (see Note 6 and Figure 8)	7.0		7.0			7.0		V
		V _{DD} = 15V	11.0		11.0			11.0		V
I _{IN}	Input Current	V _{DD} − V _{SS} = 15V V _{DD} ≥ V _{IS} ≥ V _{SS} V _{DD} ≥ V _C ≥ V _{SS}		±0.1		±10 ^{−5}	±0.1		±1.0	μA

DC Electrical Characteristics CD4016BC (Note 2) (Continued)										
Symbol	Parameter	Conditions	-40°C		25°C			85°C		Units
			Min	Max	Min	Typ	Max	Min	Max	
I _{DD}	Quiescent Device Current	V _{DD} = 5V, V _{IN} = V _{DD} or V _{SS}		1.0		0.01	1.0		7.5	μA
		V _{DD} = 10V, V _{IN} = V _{DD} or V _{SS}		2.0		0.01	2.0		15	μA
		V _{DD} = 15V, V _{IN} = V _{DD} or V _{SS}		4.0		0.01	4.0		30	μA
Signal Inputs and Outputs										
R _{ON}	“ON” Resistance	R _L = 10 kΩ to $\frac{V_{DD}-V_{SS}}{2}$ V _C = V _{DD} , V _{IS} = V _{SS} or V _{DD} V _{DD} = 10V		610		275	660		840	Ω
		V _{DD} = 15V		370		200	400		520	Ω
ΔR _{ON}	Δ“ON” Resistance Between any 2 of 4 Switches (In Same Package)	R _L = 10 kΩ to $\frac{V_{DD}-V_{SS}}{2}$ V _C = V _{DD} V _{DD} = 10V, V _{IS} = 4.75 to 5.25V		1900		850	2000		2380	Ω
		V _{DD} = 15V, V _{IS} = 7.25 to 7.75V		790		400	850		1080	Ω
I _{IS}	Input or Output Leakage Switch “OFF”	V _C = 0, V _{DD} = 15V V _{IS} = 0V or 15V, V _{OS} = 15V or 0V		±50		±0.1	±50		±200	nA
Control Inputs										
V _{ILC}	Low Level Input Voltage	V _{IS} = V _{SS} and V _{DD} V _{OS} = V _{DD} and V _{SS} I _{IS} = ±10 μA								
		V _{DD} = 5V		0.9		0.7		0.4	V	
		V _{DD} = 10V		0.9		0.7		0.4	V	
		V _{DD} = 15V		0.9		0.7		0.4	V	
V _{IHC}	High Level Input Voltage	V _{DD} = 5V	3.5		3.5			3.5		V
		V _{DD} = 10V (see Note 6 and Figure 8)	7.0		7.0			7.0		V
		V _{DD} = 15V	11.0		11.0			11.0		V
I _{IN}	Input Current	V _{CC} - V _{SS} = 15V V _{DD} ≥ V _{IS} ≥ V _{SS} V _{DD} ≥ V _C ≥ V _{SS}		±0.3		±10 ⁻⁵	±0.3		±1.0	μA
AC Electrical Characteristics* T _A = 25°C, t _r = t _f = 20 ns and V _{SS} = 0V unless otherwise specified										
Symbol	Parameter	Conditions	Min	Typ	Max	Units				
t _{PHL} , t _{PLH}	Propagation Delay Time Signal Input to Signal Output	V _C = V _{DD} , C _L = 50 pF, (Figure 1)								
		R _L = 200k								
		V _{DD} = 5V			58		100			ns
		V _{DD} = 10V			27		50			ns
t _{PZH} , t _{PZL}	Propagation Delay Time Control Input to Signal Output High Impedance to Logical Level	R _L = 1.0 kΩ, C _L = 50 pF, (Figures 2 and 3)								
		V _{DD} = 5V			20		50			ns
		V _{DD} = 10V			18		40			ns
		V _{DD} = 15V			17		35			ns
t _{PHZ} , t _{PLZ}	Propagation Delay Time Control Input to Signal Output Logical Level to High Impedance	R _L = 1.0 kΩ, C _L = 50 pF, (Figures 2 and 3)								
		V _{DD} = 5V			15		40			ns
		V _{DD} = 10V			11		25			ns
		V _{DD} = 15V			10		22			ns
	Sine Wave Distortion	V _C = V _{DD} = 5V, V _{SS} = -5 R _L = 10 kΩ, V _{IS} = 5 V _{P-P} , f = 1 kHz, (Figure 4)			0.4					%

AC Electrical Characteristics* (Continued)

$T_A = 25^\circ\text{C}$, $t_r = t_f = 20\text{ ns}$ and $V_{SS} = 0\text{V}$ unless otherwise specified

Symbol	Parameter	Conditions	Min	Typ	Max	Units
	Frequency Response — Switch “ON” (Frequency at -3 dB)	$V_C = V_{DD} = 5\text{V}$, $V_{SS} = -5\text{V}$, $R_L = 1\text{ k}\Omega$, $V_{IS} = 5\text{ V}_{P-P}$, $20\text{ Log}_{10} V_{OS}/V_{OS}$ (1 kHz) $- \text{dB}$, (Figure 4)		40		MHz
	Feedthrough — Switch “OFF” (Frequency at -50 dB)	$V_{DD} = 5\text{V}$, $V_C = V_{SS} = -5\text{V}$, $R_L = 1\text{ k}\Omega$, $V_{IS} = 5\text{ V}_{P-P}$, $20\text{ Log}_{10} (V_{OS}/V_{IS}) = -50\text{ dB}$, (Figure 4)		1.25		MHz
	Crosstalk Between Any Two Switches (Frequency at -50 dB)	$V_{DD} = V_{C(A)} = 5\text{V}$; $V_{SS} = V_{C(B)} = -5\text{V}$, $R_L = 1\text{ k}\Omega$, $V_{IS(A)} = 5\text{ V}_{P-P}$, $20\text{ Log}_{10} (V_{OS(B)}/V_{OS(A)}) = -50\text{ dB}$, (Figure 5)		0.9		MHz
	Crosstalk; Control Input to Signal Output	$V_{DD} = 10\text{V}$, $R_L = 10\text{ k}\Omega$ $R_{IN} = 1\text{ k}\Omega$, $V_{CC} = 10\text{V}$ Square Wave, $C_L = 50\text{ pF}$ (Figure 6)		150		mV _{P-P}
	Maximum Control Input	$R_L = 1\text{ k}\Omega$, $C_L = 50\text{ pF}$, (Figure 7) $V_{OS(f)} = \frac{1}{2} V_{OS}(1\text{ kHz})$ $V_{DD} = 5\text{V}$ $V_{DD} = 10\text{V}$ $V_{DD} = 15\text{V}$		6.5 8.0 9.0		MHz MHz MHz
C_{IS}	Signal Input Capacitance			4		pF
C_{OS}	Signal Output Capacitance	$V_{DD} = 10\text{V}$		4		pF
C_{IOS}	Feedthrough Capacitance	$V_C = 0\text{V}$		0.2		pF
C_{IN}	Control Input Capacitance			5	7.5	pF

*AC Parameters are guaranteed by DC correlated testing.

Note 1: “Absolute Maximum Ratings” are those values beyond which the safety of the device cannot be guaranteed. They are not meant to imply that the devices should be operated at these limits. The tables of “Recommended Operating Conditions” and “Electrical Characteristics” provide conditions for actual device operation.

Note 2: $V_{SS} = 0\text{V}$ unless otherwise specified.

Note 3: These devices should not be connected to circuits with the power “ON”.

Note 4: In all cases, there is approximately 5 pF of probe and jig capacitance on the output; however, this capacitance is included in C_L wherever it is specified.

Note 5: V_{IS} is the voltage at the in/out pin and V_{OS} is the voltage at the out/in pin. V_C is the voltage at the control input.

Note 6: If the switch input is held at V_{DD} , $V_{IH(C)}$ is the control input level that will cause the switch output to meet the standard “B” series V_{OH} and I_{OH} output levels. If the analog switch input is connected to V_{SS} , $V_{IH(C)}$ is the control input level — which allows the switch to sink standard “B” series I_{OH} , high level current, and still maintain a $V_{OL} \leq “B”$ series. These currents are shown in Figure 8.

AC Test Circuits and Switching Time Waveforms

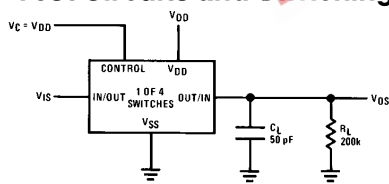


Figure 1. t_{PLH} , t_{PLH} Propagation Delay Time Signal Input to Signal Output

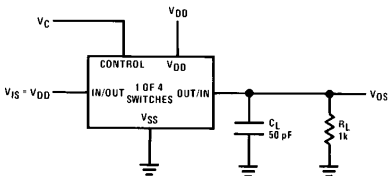
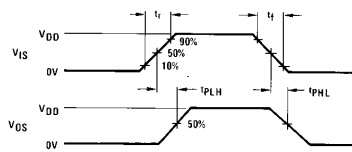
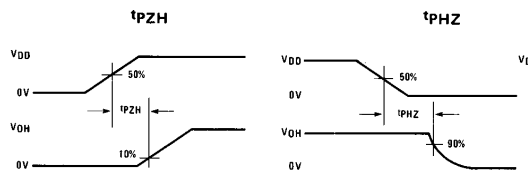


FIGURE 2. t_{PZH} , t_{PHZ} Propagation Delay Time Control to Signal Output



TL/F/5661-2

AC Test Circuits and Switching Time Waveforms (Continued)

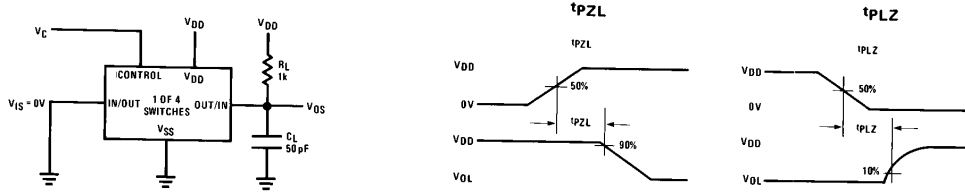


FIGURE 3. t_{PZH} , t_{PHZ} Propagation Delay Time Control to Signal Output

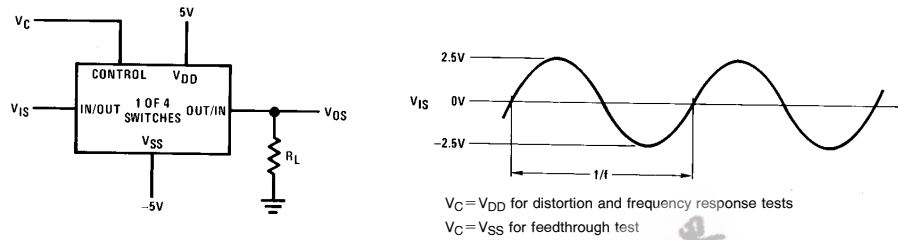


FIGURE 4. Sine Wave Distortion, Frequency Response and Feedthrough

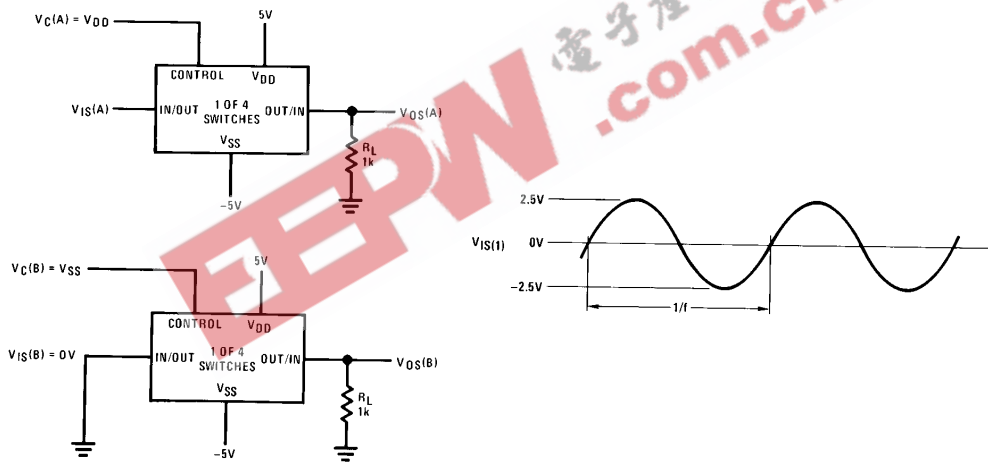


FIGURE 5. Crosstalk Between Any Two Switches

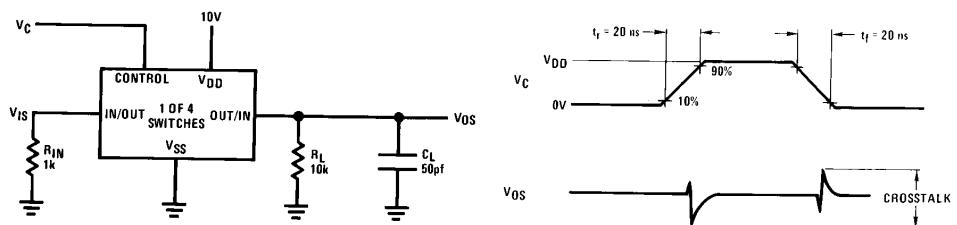


FIGURE 6. Crosstalk — Control to Input Signal Output

TL/F/5661-3

AC Test Circuits and Switching Time Waveforms (Continued)

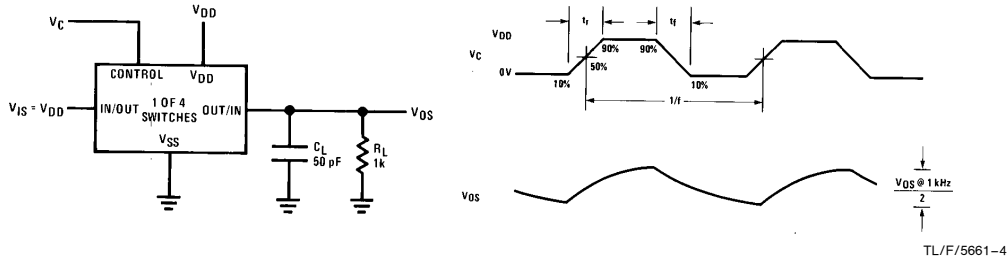


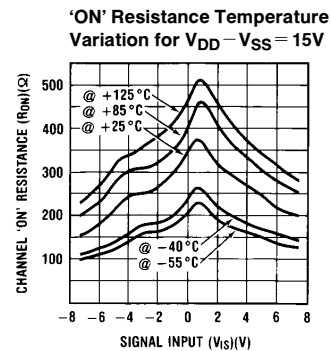
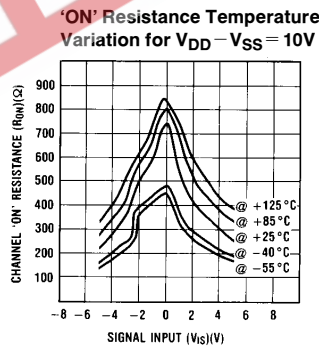
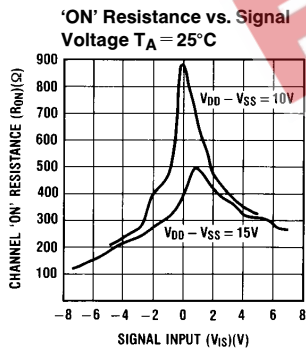
FIGURE 7. Maximum Control Input Frequency

TL/F/5661-4

Temperature Range	V _{DD}	Switch Input				Switch Output V _{OS} (V)	
		V _{IS}	I _{IS} (mA)			Min	Max
			T _{LOW}	25°C	T _{HIGH}		
MILITARY	5	0	0.25	0.2	0.14		0.4
	5	5	-0.25	-0.2	-0.14	4.6	
	10	0	0.62	0.5	0.35		0.5
	10	10	-0.62	-0.5	-0.35	9.5	
	15	0	1.8	1.5	1.1		1.5
	15	15	-1.8	-1.5	-1.1	13.5	
COMMERCIAL	5	0	0.2	0.16	0.12		0.4
	5	5	-0.2	-0.16	-0.12	4.6	
	10	0	0.5	0.4	0.3		0.5
	10	10	-0.5	-0.4	-0.3	9.5	
	15	0	1.4	1.2	1.0		1.5
	15	15	-1.4	-1.2	-1.0	13.5	

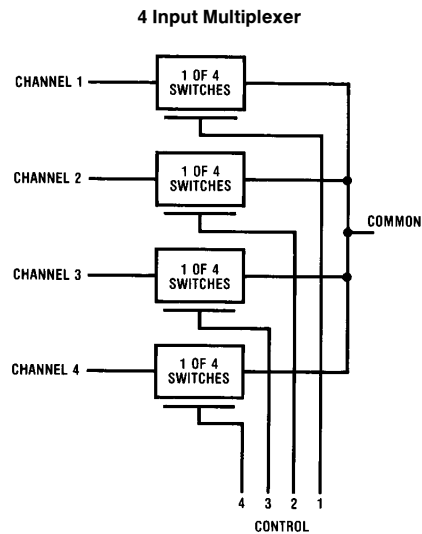
FIGURE 8. CD4016B Switch Test Conditions for V_{IHC}

Typical Performance Characteristics

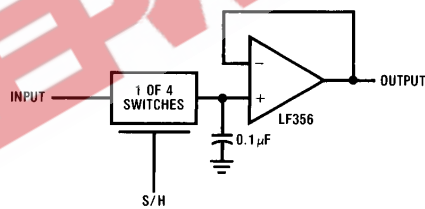


TL/F/5661-5

Typical Applications



Sample/Hold Amplifier



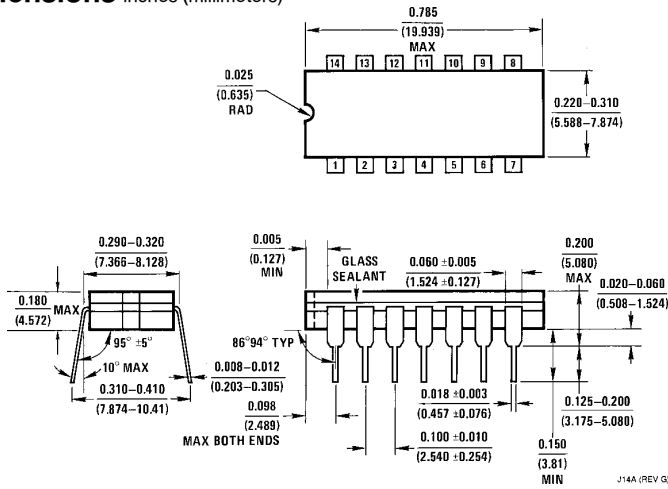
TL/F/5661-6

Special Considerations

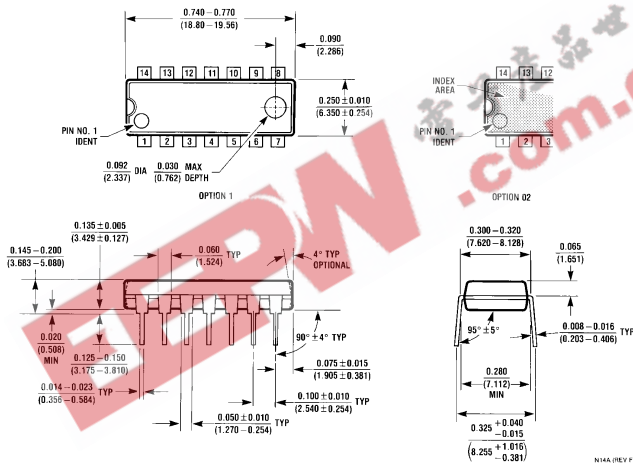
The CD4016B is composed of 4, two-transistor analog switches. These switches do not have any linearization or compensation circuitry for "R_{ON}" as do the CD4066B's. Because of this, the special operating considerations for the CD4066B do not apply to the CD4016B, but at low

supply voltages, $\leq 5V$, the CD4016B's on resistance becomes non-linear. It is recommended that at 5V, voltages on the in/out pins be maintained within about 1V of either V_{DD} or V_{SS} ; and that at 3V the voltages on the in/out pins should be at V_{DD} or V_{SS} for reliable operation.

Physical Dimensions inches (millimeters)



Dual-In-Line Package
Order Number CD4016CJ or CD4016MJ
NS Package J14A



Dual-In-Line Package
Order Number CD4016CN
NS Package N14A

LIFE SUPPORT POLICY

NATIONAL'S PRODUCTS ARE NOT AUTHORIZED FOR USE AS CRITICAL COMPONENTS IN LIFE SUPPORT DEVICES OR SYSTEMS WITHOUT THE EXPRESS WRITTEN APPROVAL OF THE PRESIDENT OF NATIONAL SEMICONDUCTOR CORPORATION. As used herein:

1. Life support devices or systems are devices or systems which, (a) are intended for surgical implant into the body, or (b) support or sustain life, and whose failure to perform, when properly used in accordance with instructions for use provided in the labeling, can be reasonably expected to result in a significant injury to the user.
2. A critical component is any component of a life support device or system whose failure to perform can be reasonably expected to cause the failure of the life support device or system, or to affect its safety or effectiveness.



National Semiconductor Corporation
 1111 West Bardin Road
 Arlington, TX 76017
 Tel: 1(800) 272-9959
 Fax: 1(800) 737-7018

National Semiconductor Europe
 Fax: (+49) 0-180-530 85 86
 Email: cnjwge@levm2.nsc.com
 Deutsch Tel: (+49) 0-180-530 85 85
 English Tel: (+49) 0-180-532 78 32
 Français Tel: (+49) 0-180-532 93 58
 Italiano Tel: (+49) 0-180-534 16 80

National Semiconductor Hong Kong Ltd.
 13th Floor, Straight Block,
 Ocean Centre, 5 Canton Rd.
 Tsimshatsui, Kowloon
 Hong Kong
 Tel: (852) 2737-1600
 Fax: (852) 2736-9960

National Semiconductor Japan Ltd.
 Tel: 81-043-299-2309
 Fax: 81-043-299-2408