

Cannon Speedy D

IDC contacts

Speedy D connectors terminate ribbon cables without stripping and without splicing. They are intermateable with all D Subminiature types offered on the market. The extremely low profile is another typical feature of the Speedy D.



Technical Data

Materials

Shell	Steel, with pure tin matt
Insulator	High quality thermoplast, flame retardant, UL94V-0
Contacts	Copper alloy
Contact area	gold-plated over nickel
Termination area	pure tin, matt

Mechanical Features

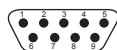
Coupling	Friction, accessories
Polarizing	Keystone shape shell
Termination	IDC
Wire sizes	AWG 26 (0,13mm ²), AWG 28 (0,08mm ²) solid or stranded
Ribbon cable	Conductor spacing 1,27mm
Temperature rating to DIN IEC 68 part 1	-55/125°C

Electrical Data

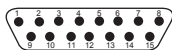
Current rating	1.5 A at 25°C, 1 A at 70°C ambient temperature
Contact resistance	15 mOhm (milli Ohm)
Voltage rating	780 VAC
Insulation resistance	5 x 10 ³ MOhm (Mega Ohm)
Air/creepage paths	minimum 0,9mm

Standard Contact Arrangements

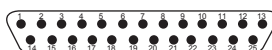
Contact size 20
Face view pin insert



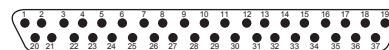
E
9



A
15



B
25



C
37

Shell size
No. of contacts



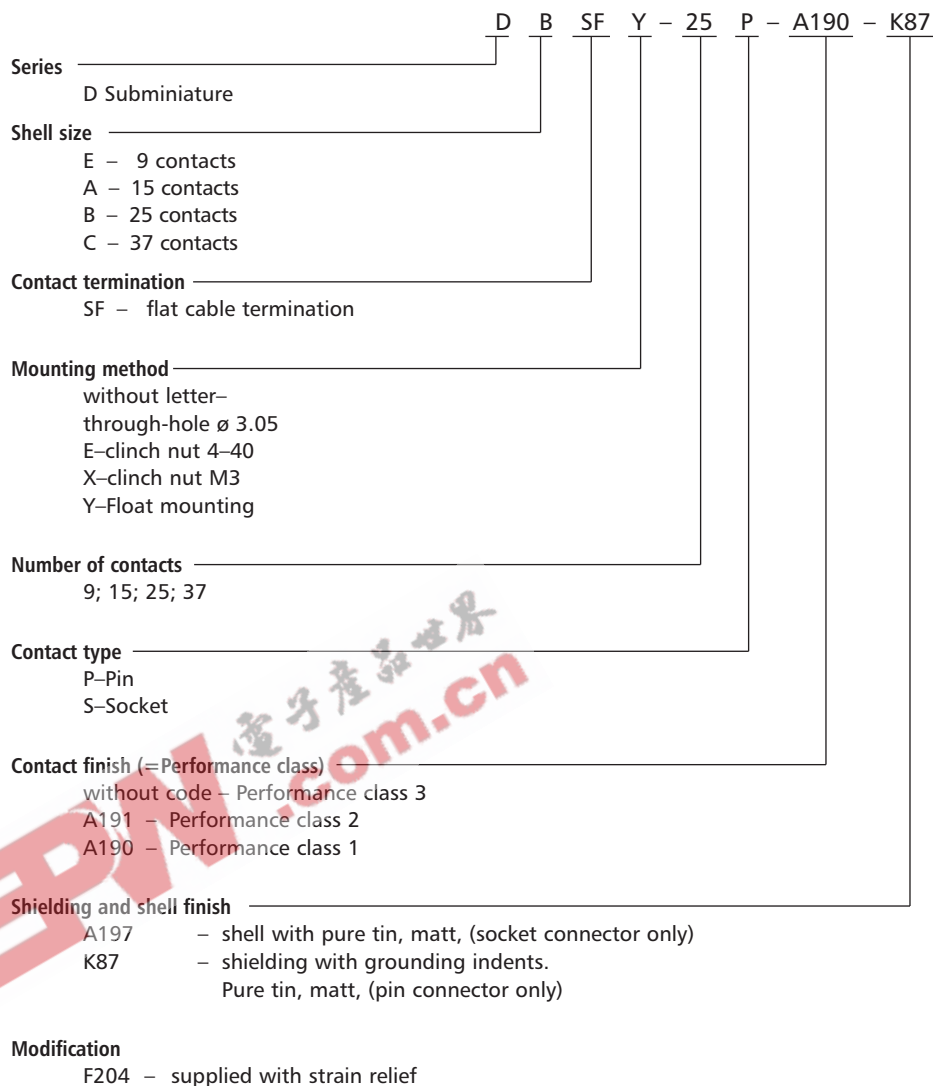
Dimensions shown in mm
Specifications and dimensions subject to change.

www.ittcannon.com

Cannon Speedy D



RoHS Compliant Ordering Key



Contact finishes/Performance class

without code – performance class 3 (50 mating cycles) is standard version of Speedy D

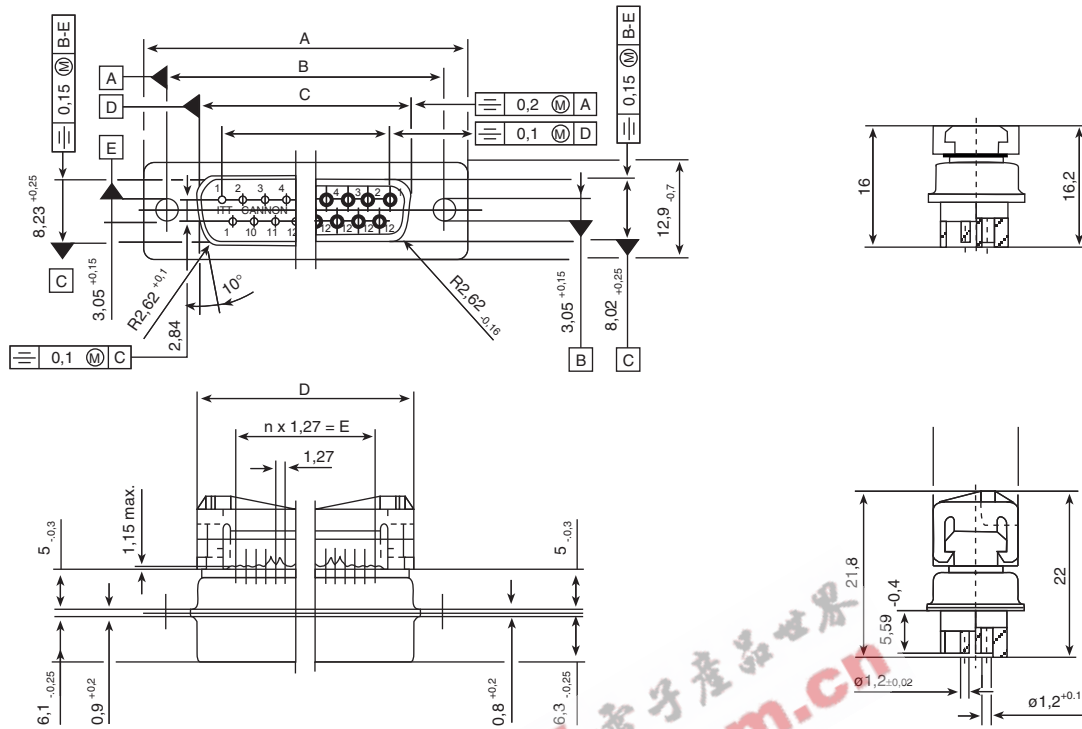
A191 – performance class 2 (200 mating cycles)

A190 – performance class 1 (500 mating cycles)

Cannon Speedy D



Pin connector / Socket connector

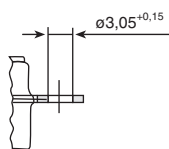


Dimensions

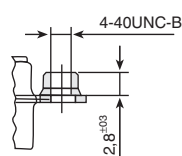
No. of contacts		A ±0,3	B ±0,3	C ±0,15	D	E
9	P	30,8	25,0	16,8	19,4	8 x 1,27 = 10,18
	S	30,8	25,0	16,25	19,4	
15	P	39,1	33,3	25,1	27,7	14 x 1,27 = 17,78
	S	39,1	33,3	24,55	27,7	
25	P	53,0	47,0	38,85	41,4	24 x 1,27 = 30,48
	S	53,0	47,0	38,3	41,4	
37	P	69,3	63,5	55,3	57,9	36 x 1,27 = 45,72
	S	69,3	63,5	54,75	57,9	

P-Pin
S-Socket

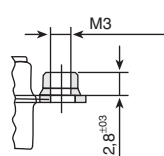
Mounting methods



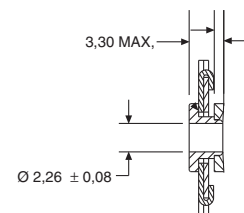
Standard
Through-hole



E
Clinch nut
4-40UNC



X
Clinch nut
M3



Y
dual float mount



Dimensions shown in mm
Specifications and dimensions subject to change.

www.ittcannon.com

Cannon Speedy D



IDC contacts

Receptacle

No. of contacts	Through-hole		Float mount		Clinch nut 4-40*	
9	DESF- 9	S-A197	DESFY- 9	S-A197	DESFE- 9	S-A197
15	DASF-15	S-A197	DASFY-15	S-A197	DASFE-15	S-A197
25	DBSF-25	S-A197	DBSFY-25	S-A197	DBSFE-25	S-A197
37	DCSF-37	S-1A97	DCSFY-37	S-A197	DCSFE-37	S-A197

or metric thread replace E by X

Plugs

(pin connector only)

No. of contacts	with grounding indents	Float mount	Clinch nut 4-40*
9	DESF- 9P-K87	DESFY- 9P-K87	DESFE-9P-K87
15	DASF-15P-K87	DASFY-15P-K87	DASFE-15P-K87
25	DBSF-25P-K87	DBSFY-25P-K87	DBSFE-25P-K87
37	DCSF-37P-K87	DCSFY-37P-K87	DCSFE-37P-K87

or metric thread replace E by X

Performance class

Performance class 1: A190 into order ref.

Performance class 2: A191 into order ref.

e.g. DESF—9P-A190-K87 or

DESF—9S-A191-A197

Cable strain relief

No. of contact	Order No.
9	029-8757-009
15	029-8757-015
25	029-8758-025
37	029-8757-037

Mounting combinations

Figure 1A

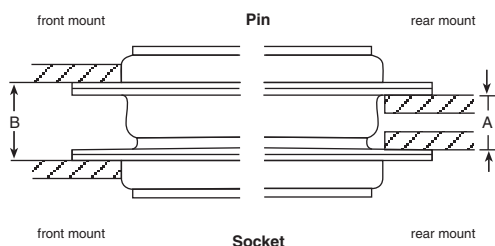


Figure 1B

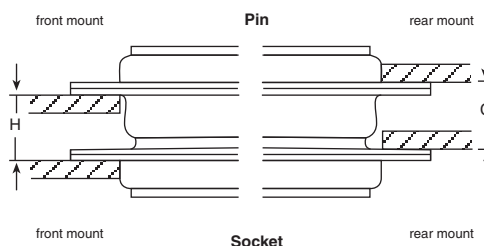


Figure 2

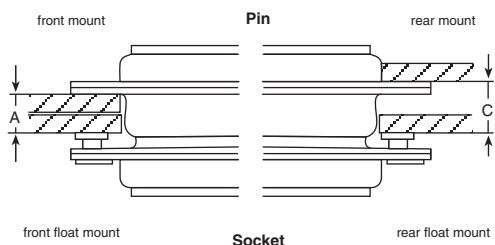


Figure 3

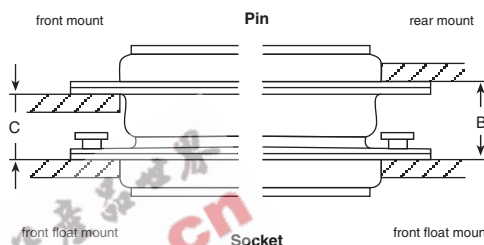


Fig.	Size	Pin	Socket	A	B	C	H
				+0,76	+0,76	+0,76	-0,76/0
1A	A, E	Standard	Standard	6,35	7,63	6,99	6,99
1B	B, C, D	Standard	Standard	6,04	7,71	7,06	6,68
2	A, E	Standard	float	5,53	-	6,18	-
2	B, C, D	Standard	float	5,23	-	6,25	-
2	A, E	float	Standard	5,53	-	6,18	-
2	B, C, D	float	Standard	5,23	-	5,87	-
3	A, E	Standard	float	-	8,59	7,95	-
3	B, C, D	Standard	float	-	8,66	7,64	-
3	A, E	float	Standard	-	8,59	7,95	-
3	B, C, D	float	Standard	-	8,51	7,87	-

Remark:

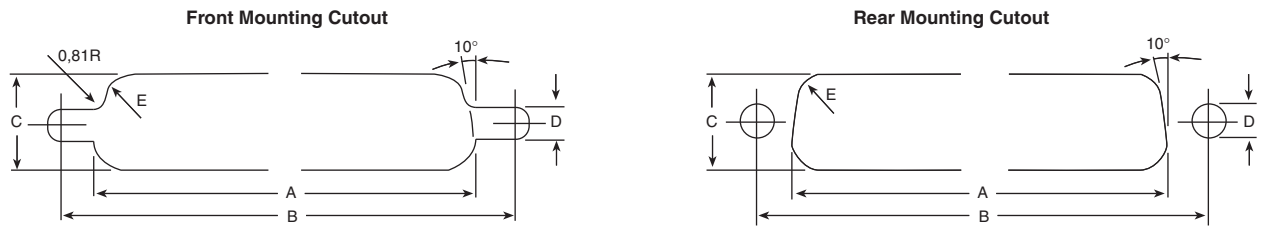
A, B, C and H are dimensions between panels and represent the recommended limit to be used in the design of the connector mounting method.

Standard pin assemblies contain 0,38 mm thick front shells on E and A sizes and 0,61 mm thick shells on B, C and D sizes.

Cannon Speedy D



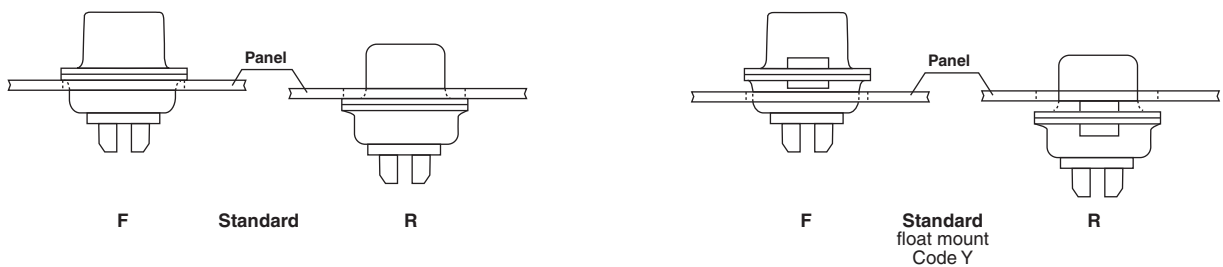
Panel cut-outs



no. of contacts	mounting	A	B	C	D	rad. E
		±0,2	±0,2	±0,2	+0,1	±0,2
9	front	22,2	25,0	13,0	3,0	2,1
	rear	20,5	25,0	11,4	3,0	3,4
15	front	30,5	33,3	13,0	3,0	3,4
	rear	28,8	33,3	11,4	3,0	3,4
25	front	44,3	47,0	13,0	3,0	2,1
	rear	42,5	47,0	11,4	3,0	3,4
37	front	60,7	63,5	13,0	3,0	2,1
	rear	59,1	63,5	11,4	3,0	3,4
50	front	58,3	61,1	15,8	3,0	2,1
	rear	56,3	61,1	14,9	3,0	3,4

No. of contacts	float mounting	A	B	C	D	rad. E
		±0,2	±0,2	±0,2	+0,1	±0,2
9	front	23,0	25,0	13,8	2,2	2,1
	rear	21,3	25,0	12,2	2,2	3,4
15	front	31,3	33,3	13,8	2,2	2,1
	rear	29,6	33,3	12,2	2,2	3,4
25	front	45,1	47,0	13,8	2,2	2,1
	rear	43,3	47,0	12,2	2,2	3,4
37	front	61,5	63,5	13,8	2,2	2,1
	rear	59,8	63,5	12,2	2,2	3,4
50	front	59,2	61,1	16,6	2,2	2,1
	rear	57,1	61,1	14,9	2,2	3,4

Mounting



F – front mounting
R – rear mounting

Dimensions shown in mm
Specifications and dimensions subject to change.
www.ittcannon.com

