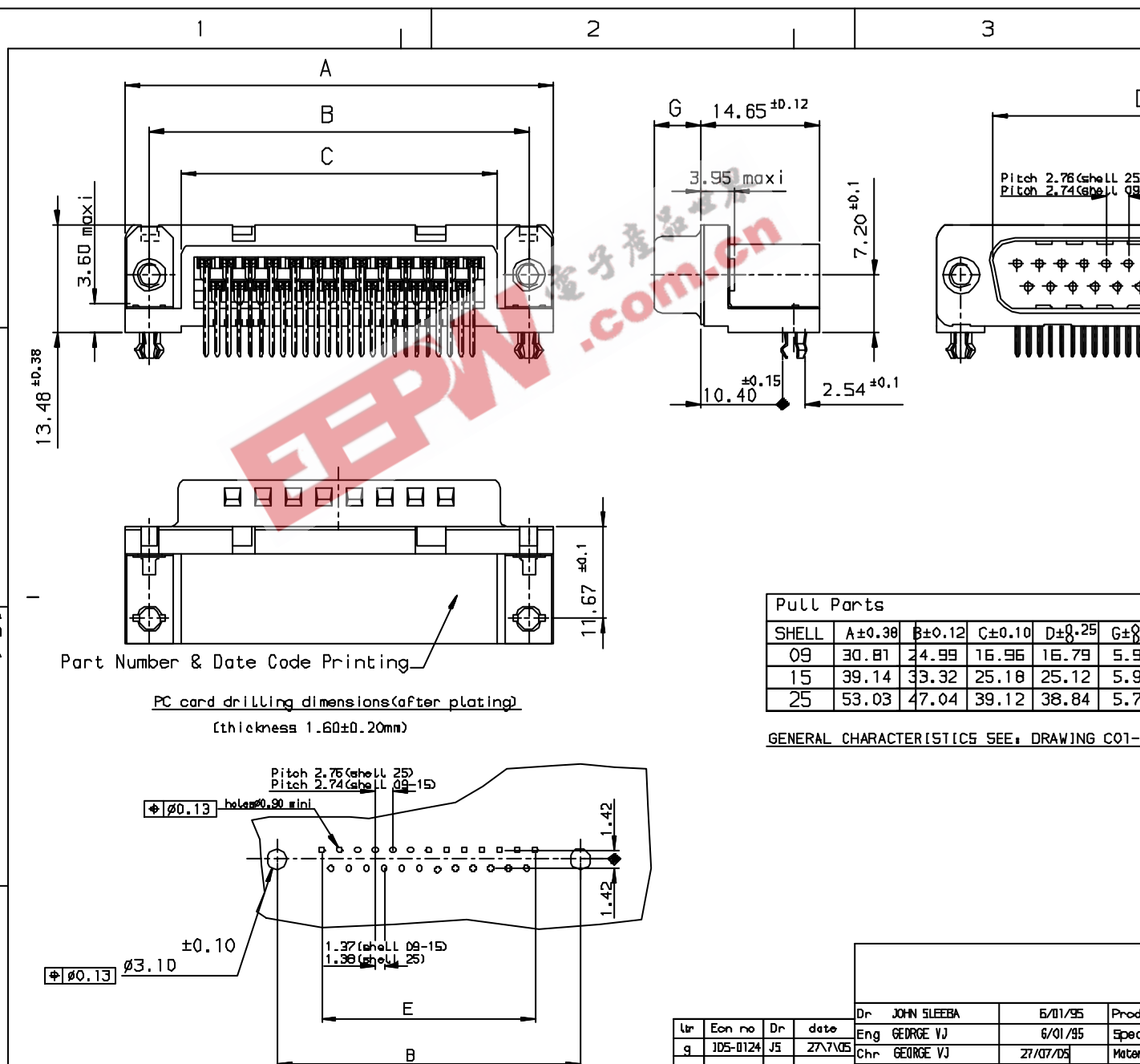


Tous droits réservés. Reproduction ou communication de ces renseignements sans la permission écrite de la FCI. Toute réimpression est interdite.

All rights are hereby reserved. Reproduction or communication of these data without the written permission of FCI is prohibited. Any reprinting is prohibited.



Part Number & Date Code Printing
 PC card drilling dimensions (after plating)
 (thickness 1.60 ± 0.20mm)

Pull Parts	SHELL	A ±0.38	B ±0.12	C ±0.10	D ±0.25	G ±0.12
09	30.81	24.99	16.96	15.79	5.90	14.65 ±0.12
15	39.14	33.32	25.18	25.12	5.90	14.65 ±0.12
25	53.03	47.04	39.12	38.84	5.70	14.65 ±0.12

GENERAL CHARACTERISTICS SEE: DRAWING C01-01

Dr	Ecn no	Dr	date
g	105-0124	J5	27/7/05

Dr	JOHN SLEEBA	6/01/95	Prod
Eng	GEORGE VJ	6/01/95	Spec
Chr	GEORGE VJ	27/07/05	Mat
Appr	K Somasundaram	27/07/05	

INDEX	DATE	REVISION DESCRIPTION
g	27/7/05	LEAD FREE DETAILS ADDED

FCI	Title	MALE CONNECT, DELTA WITH NUT, HARPOON &
	Catalog no	DELTA