

Pushbutton



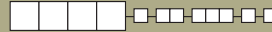
- ## Typical Applications

- UL** **CS**®
Models Available

A-40

C&K E010 Series Sealed Momentary Pushbutton Switches

SWITCH FUNCTION



NO. POLES	MODEL NO.	SWITCH FUNCTION		CONNECTED TERMINALS		SCHEMATIC
		POS. 1	POS. 2	POS. 1	POS. 2	
		C&K marking this side		C&K marking this side		
SP	E112 (STD.)	ON	MOM.	2-1	2-3	SPDT

MOM. = Momentary

All models with all options when ordered with G or Q contact material.



A

Pushbutton

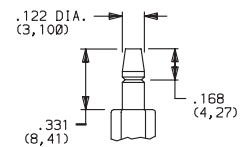
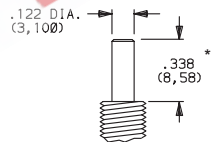
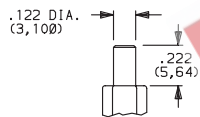
PLUNGER



S (STD.) .218" HIGH

L .338" HIGH

M .331" HIGH, SNAP-FITTING



Standard with D1 bushing (as shown).

† Subtract .100 (2,54) from plunger length when ordered with Y bushing.

Standard with Y bushing (as shown).

** Add .100 (2,54) from plunger length when ordered with D1 bushing.

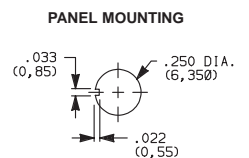
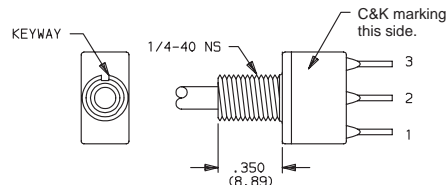
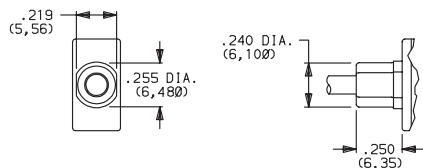
NOTE: Caps available for all plunger options, see pages A-45 and A-45.

BUSHING



D1 (STD.) UNTHREADED

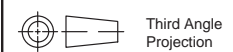
Y THREADED, KEYWAY



S plunger standard with D1 bushing.

L plunger standard with Y bushing. Available only with C, Z terminations.
Hardware: One dress nut part number 780701201, one hex nut and lockwasher supplied standard.
Withstands 4 in./lbs. without distortion.

NOTE: Internal o-ring actuator seal standard for all bushing options.



Dimensions are shown: IN (mm)
Dimensions subject to change



Cannon

C&K E010 Series Sealed Momentary Pushbutton Switches

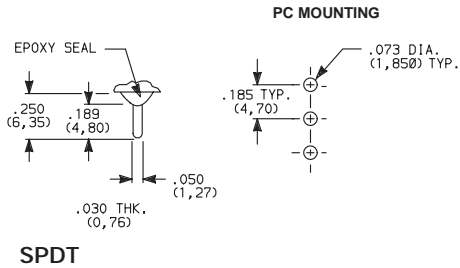


A

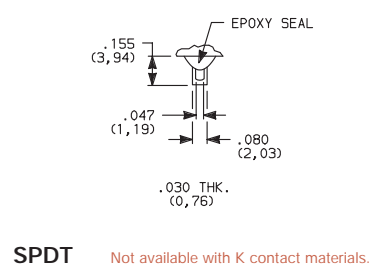
Pushbutton

TERMINATIONS

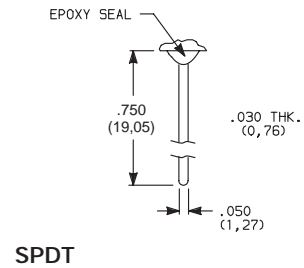
C (STD.) PC THRU-HOLE



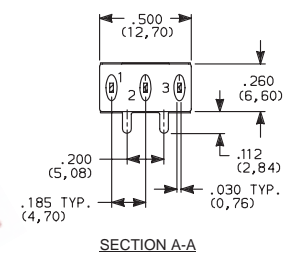
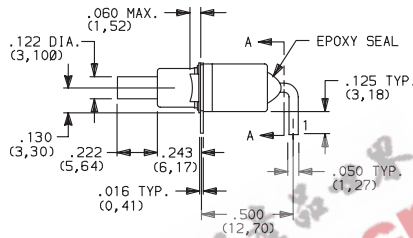
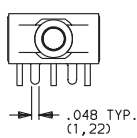
Z SOLDER LUG



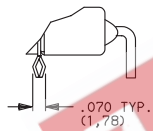
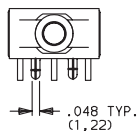
W WIRE WRAP



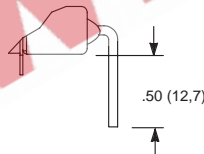
A (STD.) RIGHT ANGLE, PC THRU-HOLE



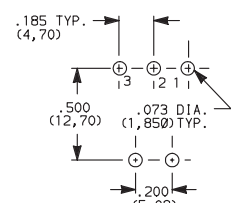
A3 RIGHT ANGLE, SNAP-IN, PC THRU-HOLE



AW RIGHT ANGLE, EXTENDED, PC THRU-HOLE

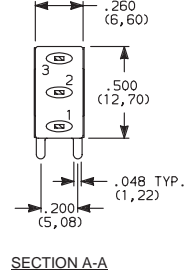
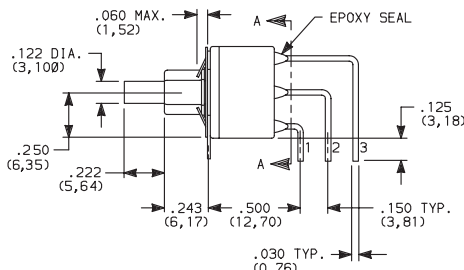
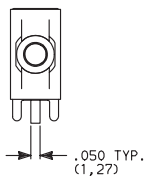
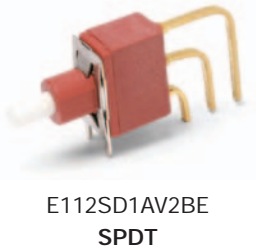


PC MOUNTING

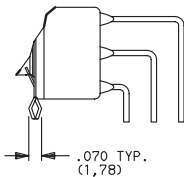
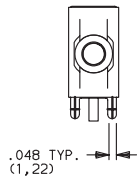


NOTE: Terminal bend radii and lead-in manufacturing option.
Available with D1 bushing only.

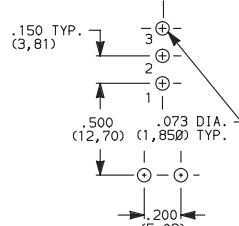
AV2 (STD.) VERTICAL RIGHT ANGLE, PC THRU-HOLE, .150" PITCH



AV3 VERTICAL RIGHT ANGLE, SNAP-IN, PC THRU-HOLE, .150" PITCH



PC MOUNTING



NOTE: Terminal bend radii and lead-in manufacturing option.
Available with D1 bushing only.



Dimensions are shown: IN (mm)
Dimensions subject to change



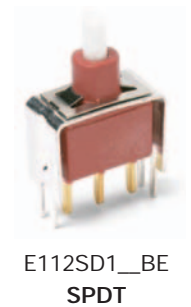
Cannon

The diagram shows a horizontal sequence of nodes connected by arrows. The first three nodes are black rectangles containing the numbers 1, 2, and 3. The next three nodes are white rectangles containing the numbers 4, 5, and 6. The final two nodes are small white squares containing the numbers 7 and 8. The arrows connect the nodes in sequence from left to right.

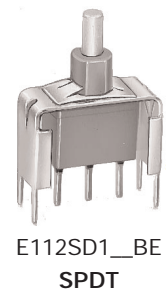
Pushbutton



V31, V91 VERTICAL MOUNT, V-BRACKET, SNAP-IN



V81 VERTICAL MOUNT, V-BRACKET, SNAP-IN



www.ittcannon.com

C&K E010 Series Sealed Momentary Pushbutton Switches



A

Pushbutton

CONTACT MATERIAL



OPTION CODE	CONTACT MATERIAL	TERMINAL PLATING	RATINGS	
B (STD.)	GOLD ¹	GOLD ¹	LOW LEVEL/DRY CIRCUIT	0.4 VA MAX. @ 20 V AC OR DC MAX.
K		TIN-LEAD ⁶		
Q (STD.)	SILVER ^{4,5}	SILVER ⁵	POWER	4 AMPS @ 125 V AC OR 28 V DC.
G	GOLD OVER SILVER ^{2,3}	GOLD ³	LOW LEVEL/DRY CIRCUIT OR POWER	0.4 VA MAX @ 20 V AC OR DC MAX. OR 4 AMPS @ 125 V AC OR 28 V DC.

CONTACT MATERIAL/APPLICATION RECOMMENDATIONS—SEE SECTION N.

¹ CONTACTS & TERMINALS: Copper alloy, with gold plate over nickel plate.

² END CONTACTS: Coin silver, with gold plate over nickel plate.

³ CENTER CONTACTS & ALL TERMINALS: Coin silver, with gold plate over nickel plate.

⁴ END CONTACTS: Coin silver, silver plated.

⁵ CENTER CONTACTS & ALL TERMINALS: Copper alloy, silver plated.

⁶ TERMINALS: Copper alloy, with tin-lead alloy over nickel plate.

All models with all options when ordered with G or Q contact material.

B contact material standard with all terminations except C, Z.

B contact material must be ordered with R2 terminations.

Q contact material standard with C, Z terminations.

K contact materials not available with Z terminations.

SEAL

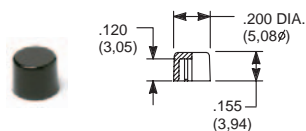


E (STD.) EPOXY SEAL



AVAILABLE HARDWARE

Cap

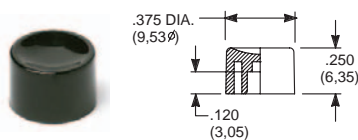


PART NO.

708901000 WHITE
708902000 BLACK
708903000 RED

Material: Nylon
Finish: Gloss

Cap

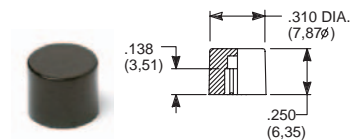


PART NO.

752701000 WHITE
752702000 BLACK
752703000 RED

Material: Nylon
Finish: Gloss

Cap



PART NO.

801801000 WHITE
801802000 BLACK
801803000 RED

Material: Nylon
Finish: Gloss

NOTE: Additional nuts, locking rings and lockwashers available separately, see section N.
Other cap colors available, consult Customer Service Center.

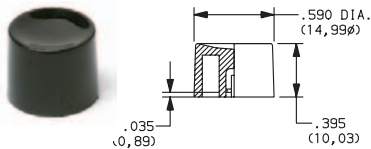


Dimensions are shown: IN (mm)
Dimensions subject to change

C&K E010 Series Sealed Momentary Pushbutton Switches

AVAILABLE HARDWARE

Cap, Snap-fitting plunger

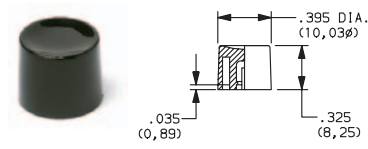


PART NO.

894001000 WHITE
894002000 BLACK
894003000 RED

Material: Nylon
Finish: Gloss

Cap, Snap-fitting plunger

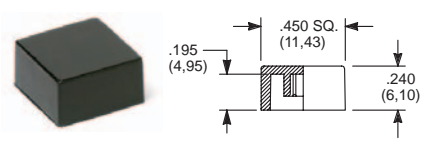


PART NO.

894101000 WHITE
894102000 BLACK
894103000 RED

Material: Nylon
Finish: Gloss

Cap



PART NO.

484601000 WHITE
484602000 BLACK
484603000 RED

Material: Nylon
Finish: Gloss

PART NO.

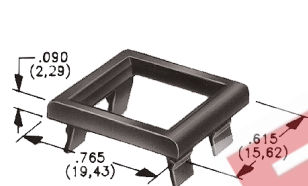
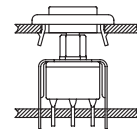
798201000 WHITE
798202263 BLACK
798203000 RED

Material: Nylon
Finish: Matte

NOTE: Additional nuts, locking rings and lockwashers available separately, see section N.
Other cap colors available, consult Customer Service Center.

Frames snap into panel opening and are independent from switch mounting. Accurate positioning of the PC mounted switch relative to the panel opening is necessary to provide proper clearance between actuator and frame. Available in two basic styles and four panel thicknesses .047-.125 in. Material: Nylon. Finish: Matte.

TYPICAL APPLICATION



.047" (1,19) PANEL THK.

PART NO.

432501000
432502263
432503000

.062" (1,57) PANEL THK.

PART NO.

432601000
432602263
432603000

.090" (2,29) PANEL THK.

PART NO.

432701000
432702263
432703000

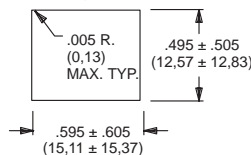
.125" (3,18) PANEL THK.

PART NO.

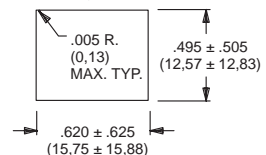
432801000 WHITE
432802263 BLACK
432803000 RED

PANEL MOUNTING

For part numbers
4325xxxxx, 4326xxxxx



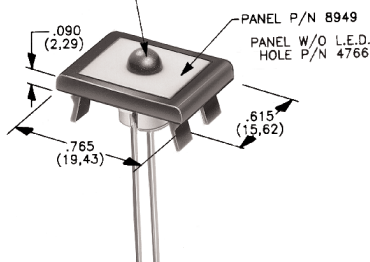
For part numbers
4327xxxxx, 4328xxxxx



Panel Inserts

Above frames (part nos. 432XXXXXX) are also available with insert which accepts LED for indicator light assembly. Order insert separately from frame. Blank insert panel (without hole for LED) also available. **LED not included.**

L.E.D. (.200 DIA. (5,08)) SNAPS
SECURELY INTO INSERT (P/N 8949).
HEIGHT DEPENDS ON L.E.D. USED.



PANEL INSERT
WITH HOLE FOR LED

PART NO.

894901000
894902000
894903000

BLANK PANEL INSERT
WITHOUT HOLE FOR LED

PART NO.

476601000 WHITE
476602000 BLACK
476603000 RED

Special colors, custom markings available, consult Customer Service Center.



A

Pushbutton