

### Switchmode Dual Fast Recovery Power Rectifiers

Designed for use in switching power supplies, inverters and as free wheeling diodes. These state-of-the-art devices have the following features:

- \* Glass Passivated chip junctions
- \* Low Reverse Leakage Current
- \* Fast Switching for High Efficiency
- \* 150 Operating Junction Temperature
- \* Low Stored Charge Majority Carrier Conduction
- \* Low Forward Voltage , High Current Capability
- \* Plastic Material used Carries Underwriters Laboratory Flammability Classification 94V-O

**FAST RECOVERY  
RECTIFIERS**

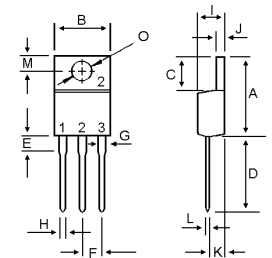
**20 AMPERES  
50-200 VOLTS**



**TO-220AB**

### MAXIMUM RATINGS

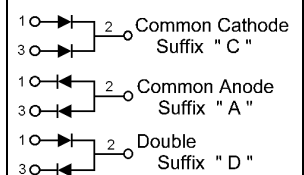
Characteristic	Symbol	F20C				Unit
		05	10	15	20	
Peak Repetitive Reverse Voltage Working Peak Reverse Voltage DC Blocking Voltage	$V_{RRM}$ $V_{RWM}$ $V_R$	50	100	150	200	V
RMS Reverse Voltage	$V_{R(RMS)}$	35	70	105	140	V
Average Rectifier Forward Current Per Leg $T_C=125$ Per Total Device	$I_{F(AV)}$		10 20			A
Peak Repetitive Forward Current (Rate $V_R$ , Square Wave, 20kHz)	$I_{FM}$		20			A
Non-Repetitive Peak Surge Current (Surge applied at rate load conditions halfwave, single phase, 60Hz)	$I_{FSM}$		175			A
Operating and Storage Junction Temperature Range	$T_J, T_{stg}$		-65 to +150			



DIM	MILLIMETERS	
	MIN	MAX
A	14.68	15.32
B	9.78	10.42
C	5.02	6.52
D	13.06	14.62
E	3.57	4.07
F	2.42	2.66
G	1.12	1.36
H	0.72	0.96
I	4.22	4.98
J	1.14	1.38
K	2.20	2.98
L	0.33	0.55
M	2.48	2.98
O	3.70	3.90

### ELECTRIAL CHARACTERISTICS

Characteristic	Symbol	F20C				Unit
		05	10	15	20	
Maximum Instantaneous Forward Voltage ( $I_F=10$ Amp $T_C=25$ )	$V_F$		1.30			V
Maximum Instantaneous Reverse Current ( Rated DC Voltage, $T_C=25$ ) ( Rated DC Voltage, $T_C=125$ )	$I_R$		10 200			$\mu$ A
Reverse Recovery Time ( $I_F=0.5$ A, $I_R=1.0$ , $I_{rr}=0.25$ A )	$T_{rr}$		150			ns
Typical Junction Capacitance (Reverse Voltage of 4 volts & $f=1$ MHz)	$C_P$		55			pF



# F20C05 Thru F20C20

FIG-1 TYPICAL FORWARD CHARACTERISTICS

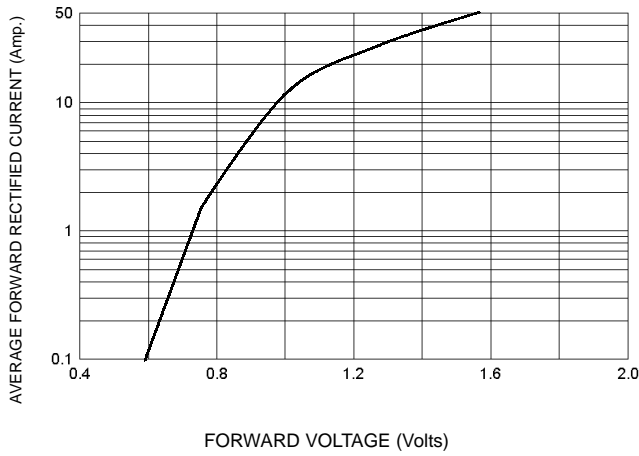


FIG-3 FORWARD CURRENT DERATING CURVE

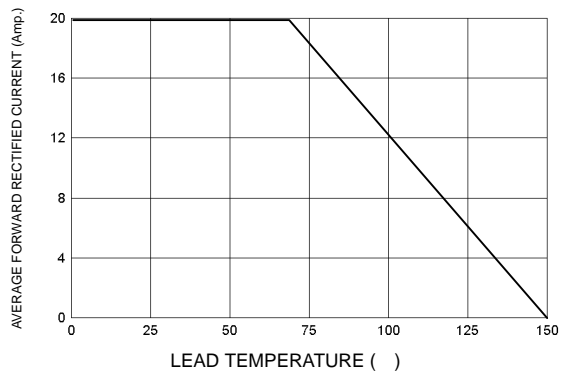


FIG-2 TYPICAL REVERSE CHARACTERISTICS

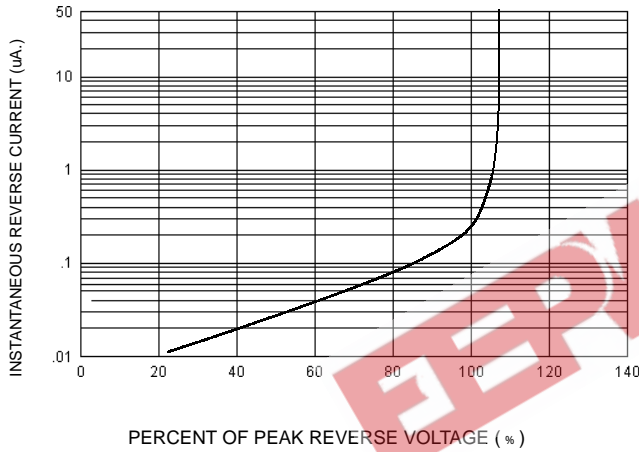


FIG-4 TYPICAL JUNCTION CAPACITANCE

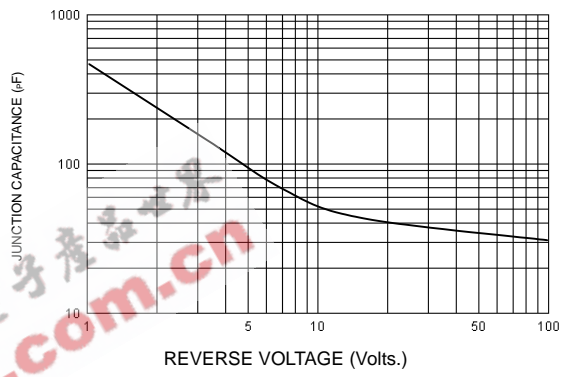
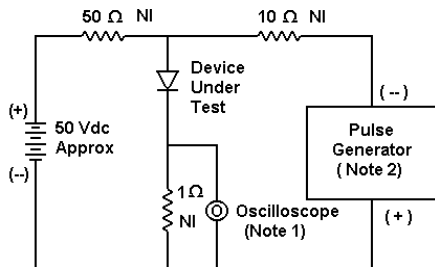
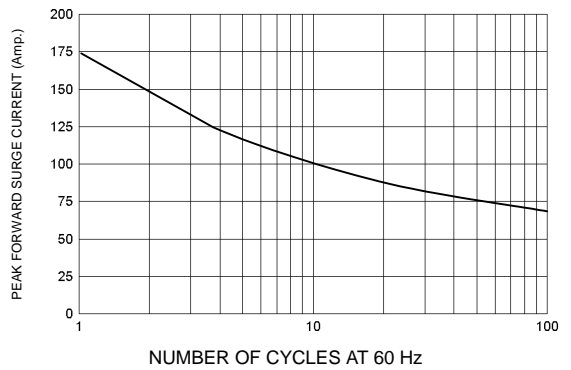
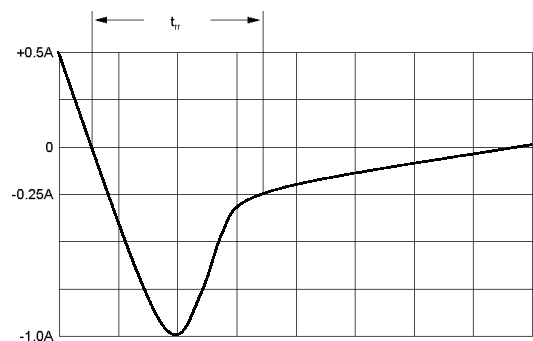


FIG-5 PEAK FORWARD SURGE CURRENT



- Notes:  
 1. Rise Time = 7 ns max. Input Impedance = 1 M Ω , 22 pF  
 2. Rise Time = 10 ns max. Input Impedance = 50 Ω



Set time base for 20/50 ns/cm

FIG-6 Reverse Recovery Time Characteristic and Test Circuit Diagram