

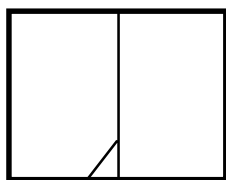
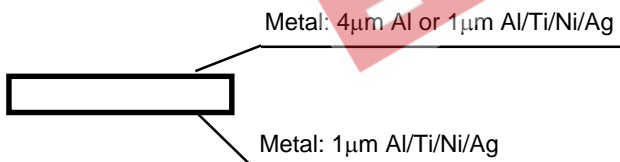
Silicon Chip Resistors

Silicon Chip Resistors are offered only conjunctively to purchase order of further IXYS chips

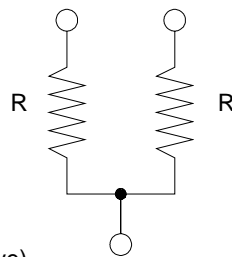
Part Type	Resistance ^① Ω	Chip mm	Dimension mils	Chips per Wafer	Wafer Diameter mm	R _{th} ^② K/W	Notes
IXWW 13-AL	1	2.0x2.88x0.43	79x113x17	1184	100	2.5	3
IXWW 14-AL	1	2.4x2.4x0.43	94x94x17	1184	100	2.5	3
IXWW 11-AL	3	1.4x1.4x0.43	55x55x17	3400	100	7.4	3
IXWW 22-AL	2x2	2.0x4.8x0.44	79x189x17	752	100	2x3.0	4
IXWW 25-AL	2x2.5	2.0x4.0x0.44	79x189x17	908	100	2x3.6	4
IXWW 27-AL	3	1.91x1.91x0.44	75x75x17	2034	100	4	3
IXWW 34-AG	5	2.4x2.4x0.48	94x94x17	1184	100	2.5	3
IXWW 34-AL	5	2.4x2.4x0.48	94x94x17	1184	100	2.5	3
IXWW 44-AG	10	2.4x2.4x0.50	94x94x20	1184	100	2.5	3
IXWW 44-AL	10	2.4x2.4x0.50	94x94x20	1184	100	2.5	3

- Notes: 1. 25 °C values; resistance tolerance ±30 %; resistor temperature coefficient 1.02 %/ °C.
 2. Chip resistor thermal resistance when soft-soldered in TO-247 case;
 3. One resistor per chip;
 4. Two resistors with one common connection per chip.
 5. Max. operating chip temperature is 175 °C; Use this value when calculating chip maximum power dissipation
 6. High precision chip resistors, lateral version, 2 and 4 OHM, 2.3 x 2.3 mm, on request

Die Outline



Separation groove on dual resistor chips. (See note 4 above)



Nomenclature

T - unsawed wafers
 W - sawed wafer on foil

Part type

AL: top side 4 µm Al
 bottom side 1 µm Al/Ti/Ni/Ag
 AG: both sides 1 µm Al/Ti/Ni/Ag

W - IXWW13 - AL

