



# SAW Components

Data Sheet K 3958 M

Data Sheet

**EEPW**

电子產品世界  
com.cn

**EPCOS**



**SAW Components**

**K 3958 M**

**IF Filter for Video Applications**

**33,90 MHz and 38,90 MHz**

**Data Sheet**

**Standard**

- B/G
- D/K
- I
- L/L'

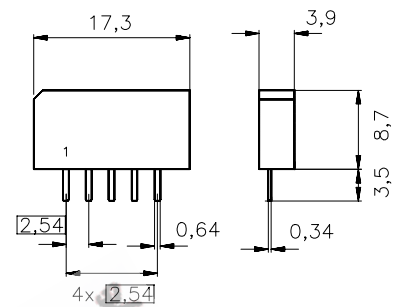
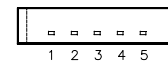
Plastic package **SIP5K**

**Features**

- TV IF filter with Nyquist slopes at 33.90 MHz and 38.90 MHz
- Constant group delay

**Terminals**

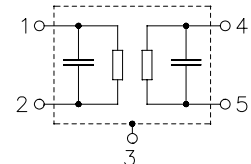
- Tinned CuFe alloy



Dimensions in mm, approx. weight 1,0 g

**Pin configuration**

- 1 Input
- 2 Input - ground
- 3 Chip - carrier ground
- 4 Output
- 5 Output



Type	Ordering code	Marking and package according to	Packing according to
K 3958 M	B38389-K3958-M100	C61157-A1-A15	F61064-V8067-Z000

**Maximum ratings**

Operable temperature range	$T_A$	-25/+65	°C	
Storage temperature range	$T_{stg}$	-40/+85	°C	
DC voltage	$V_{DC}$	5	V	between any terminals
AC voltage	$V_{pp}$	10	V	between any terminals



**SAW Components**

**K 3958 M**

**IF Filter for Video Applications**

**33,90 MHz and 38,90 MHz**

**Data Sheet**

**Characteristics**

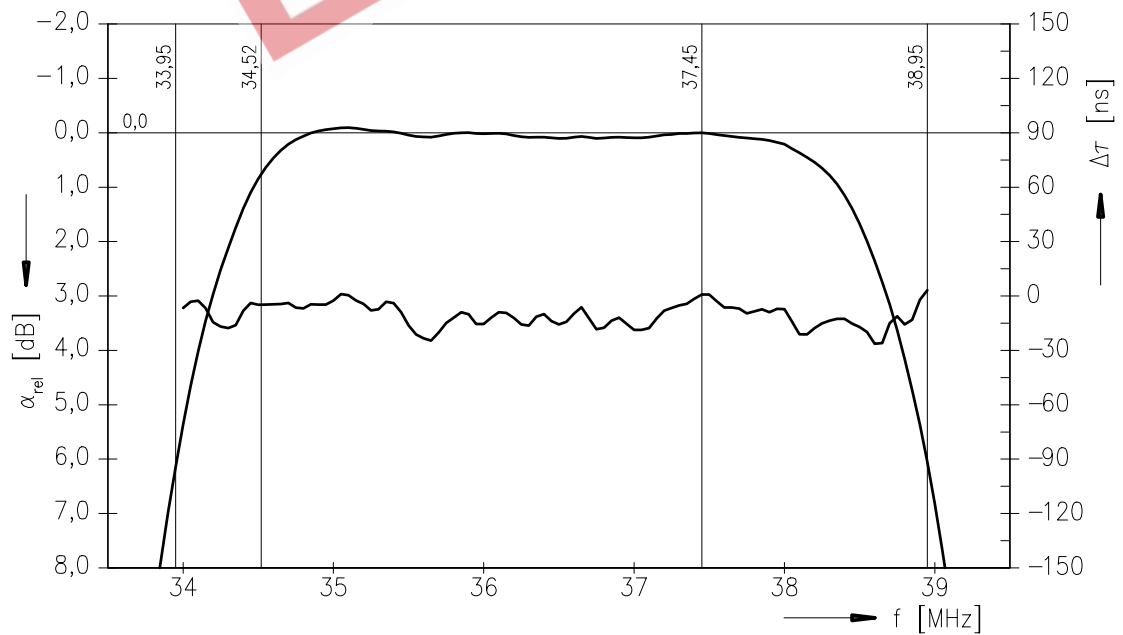
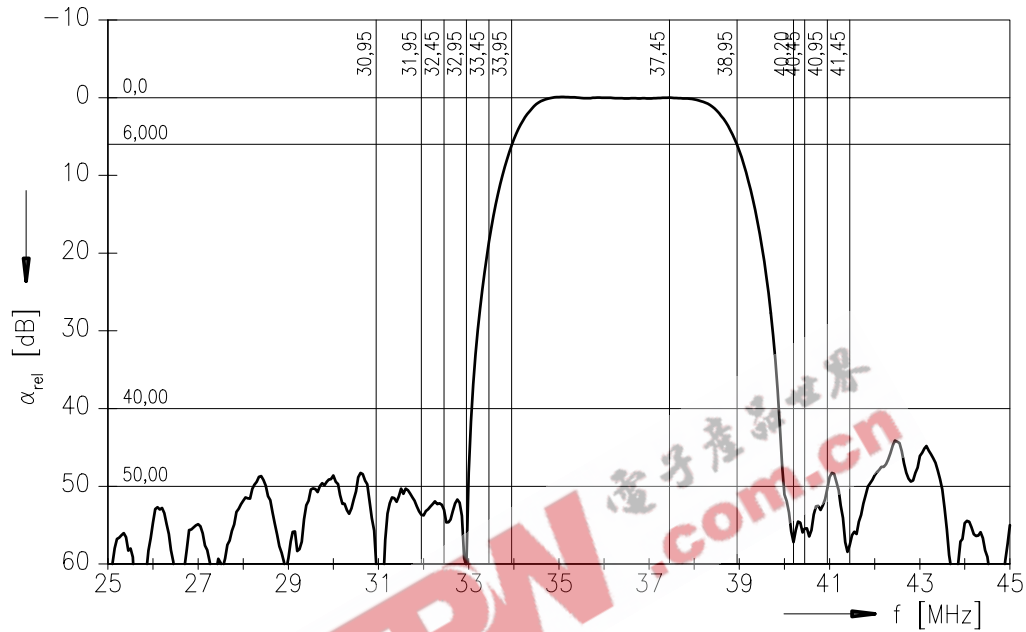
Reference temperature:  $T_A = 25 (45) \text{ }^\circ\text{C}$   
 Terminating source impedance:  $Z_S = 50 \text{ } \Omega$   
 Terminating load impedance:  $Z_L = 2 \text{ k}\Omega \parallel 3 \text{ pF}$

		<b>min.</b>	<b>typ.</b>	<b>max.</b>	
<b>Insertion attenuation</b>					
	$\alpha$				
Reference level for the following data	37,45 (37,40) MHz	13,5	15,0	16,5	dB
<b>Relative attenuation</b>					
	$\alpha_{rel}$				
Picture carrier	38,95 (38,90) MHz	5,0	6,0	7,0	dB
	33,95 (33,90) MHz	4,8	5,8	6,8	dB
Color carrier	34,52 (34,47) MHz	-0,4	0,6	1,6	dB
Sound carrier	32,45 (32,40) MHz	—	57,0	—	dB
	32,95 (32,90) MHz	—	58,0	—	dB
Adjacent picture carrier	33,45 (33,40) MHz	16,0	18,2	—	dB
	30,95 (30,90) MHz	47,0	60,0	—	dB
Adjacent sound carrier	31,95 (31,90) MHz	47,0	55,0	—	dB
	40,45 (40,40) MHz	46,0	60,0	—	dB
	40,20 (40,15) MHz	42,0	52,0	—	dB
	40,95 (40,90) MHz	43,0	51,0	—	dB
Lower sidelobe	41,45 (41,40) MHz	45,0	60,0	—	dB
	25,05 ... 31,95 (25,00 ... 31,90) MHz	42,0	48,0	—	dB
Upper sidelobe	40,45 ... 45,05 (40,40 ... 45,00) MHz	38,0	45,0	—	dB
<b>Reflected wave signal suppression</b>					
1,2 $\mu\text{s}$ ... 6,0 $\mu\text{s}$ after main pulse (test pulse 250 ns, carrier frequency 37,45 MHz)		42,0	52,0	—	dB
<b>Feedthrough signal suppression</b>					
1,0 $\mu\text{s}$ ... 0,9 $\mu\text{s}$ before main pulse (test pulse 250 ns, carrier frequency 37,45 MHz)		50,0	56,0	—	dB
<b>Group delay ripple</b> (p-p, aperture 50 kHz)					
	$\Delta\tau$				
33,95 ... 38,95 (33,90 ... 38,90) MHz		—	40	—	ns
<b>Impedance</b> at 37,45 MHz					
Input: $Z_{IN} = R_{IN} \parallel C_{IN}$		—	2,2 $\parallel$ 10,8	—	k $\Omega$ $\parallel$ pF
Output: $Z_{OUT} = R_{OUT} \parallel C_{OUT}$		—	1,9 $\parallel$ 3,9	—	k $\Omega$ $\parallel$ pF
<b>Temperature coefficient of frequency</b>					
	$TC_f$	—	-72	—	ppm/K



Data Sheet

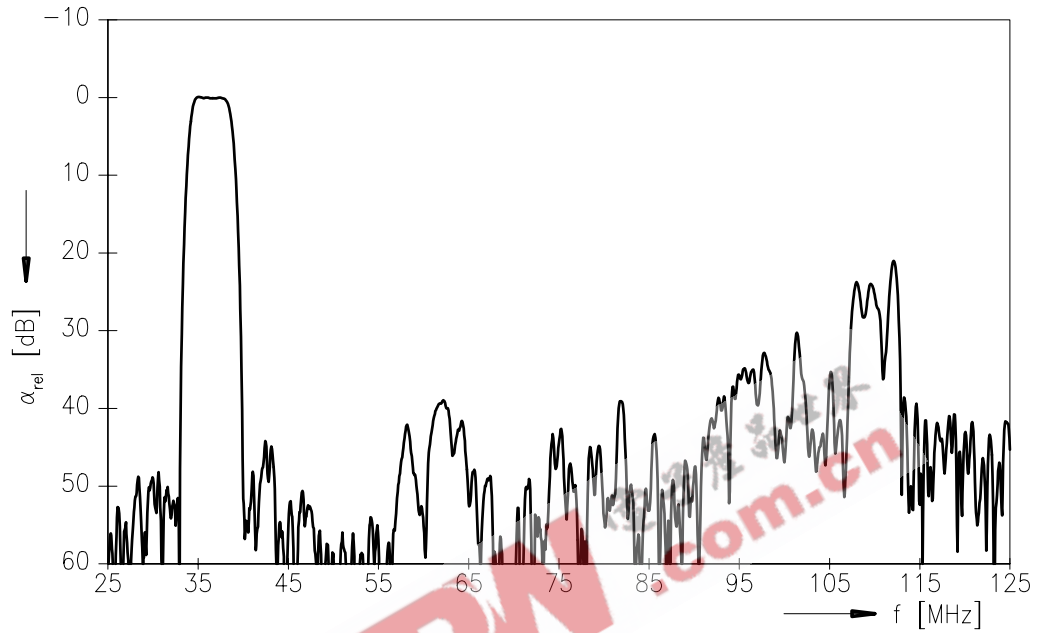
Frequency response



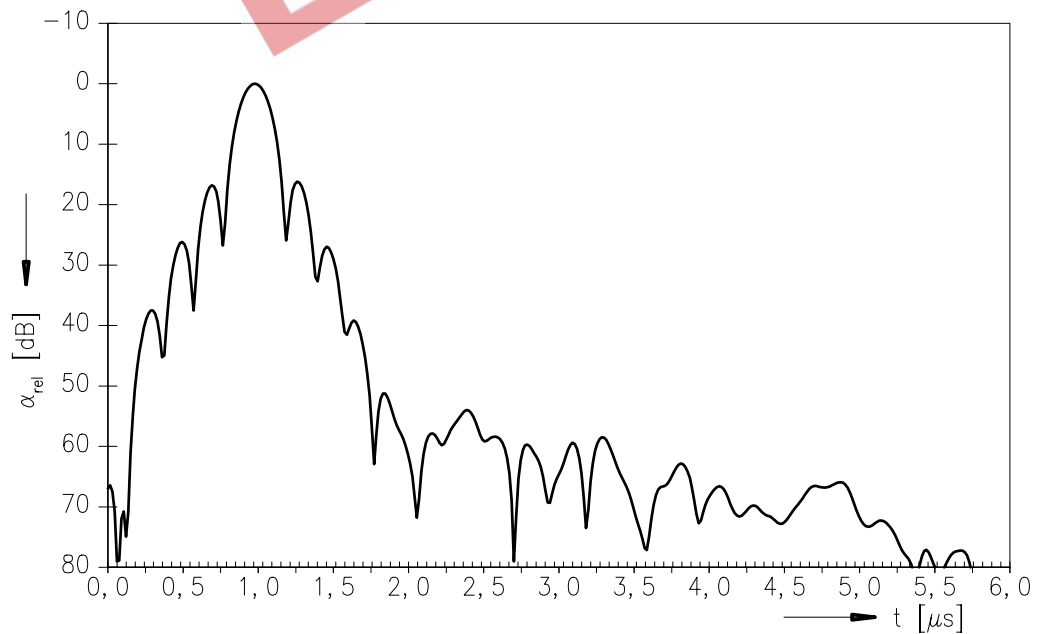


Data Sheet

Frequency response



Time domain response





SAW Components

K 3958 M

IF Filter for Video Applications

33,90 MHz and 38,90 MHz

Data Sheet

EPCW 电子產品世界  
.com.cn

**Published by EPCOS AG**

**Surface Acoustic Wave Components Division, SAW CE MM PD**

**P.O. Box 80 17 09, D-81617 München**

© EPCOS AG 2001. All Rights Reserved.

As far as patents or other rights of third parties are concerned, liability is only assumed for components per se, not for applications, processes and circuits implemented within components or assemblies.

The information describes the type of component and shall not be considered as assured characteristics.

Terms of delivery and rights to change design reserved.

For questions on technology, prices and delivery please contact the sales offices of EPCOS AG or the international representatives.

Due to technical requirements components may contain dangerous substances. For information on the type in question please also contact one of our sales offices.