



# SAW Components

Data Sheet K 9352 M

Data Sheet

**EEPW**

電子產品世界  
com.cn

**EPCOS**



SAW Components

K 9352 M

IF Filter for Audio Applications

38,00 MHz

Data Sheet

Standard

- B/G
- D/K
- I
- M/N

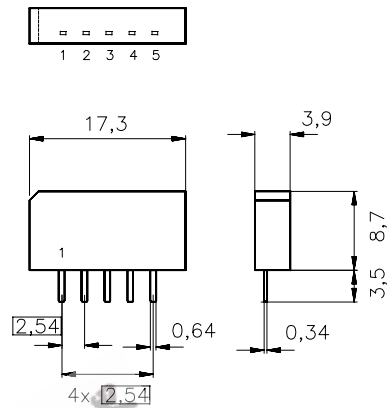
Plastic package SIP5K

Features

- TV IF audio filter with pass band for sound carriers between 31,50 MHz and 33,50 MHz

Terminals

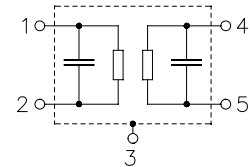
- Tinned CuFe alloy



Dimensions in mm, approx. weight 1,0 g

Pin configuration

- 1 Input
- 2 Input - ground
- 3 Chip carrier - ground
- 4 Output
- 5 Output



Type	Ordering code	Marking and package according to	Packing according to
K 9352 M	B39380-K9352-M100	C61157-A1-A15	F61074-V8067-Z000

Maximum ratings

Operable temperature range	$T_A$	-25/+65	°C	
Storage temperature range	$T_{stg}$	-40/+85	°C	
DC voltage	$V_{DC}$	12	V	between any terminals
AC voltage	$V_{pp}$	10	V	between any terminals



SAW Components

K 9352 M

IF Filter for Audio Applications

38,00 MHz

Data Sheet

Characteristics

Reference temperature:  $T_A = 25\text{ °C}$   
 Terminating source impedance:  $Z_S = 50\ \Omega$   
 Terminating load impedance:  $Z_L = 2\text{ k}\Omega \parallel 3\text{ pF}$

		min.	typ.	max.	
<b>Insertion attenuation</b>					
	$\alpha$				
Reference level for the following data	31,50 MHz	11,8	13,3	14,8	dB
<b>Relative attenuation</b>					
	$\alpha_{rel}$				
Sound carrier	32,50 MHz	-1,1	-0,1	0,9	dB
	33,50 MHz	-0,8	0,2	1,2	dB
Picture carrier	38,00 MHz	44,0	52,0	—	dB
Adjacent picture carrier	30,00 MHz	42,0	54,0	—	dB
Adjacent sound carrier	39,50 MHz	42,0	52,0	—	dB
	40,00 MHz	40,0	47,0	—	dB
	40,50 MHz	44,0	56,0	—	dB
Lower sidelobe	25,00 ... 30,00 MHz	37,0	43,0	—	dB
Upper sidelobe	38,00 ... 45,00 MHz	39,0	46,0	—	dB
<b>Impedance at 31,50 MHz</b>					
Input:	$Z_{IN} = R_{IN} \parallel C_{IN}$	—	1,7 $\parallel$ 11,0	—	k $\Omega$ $\parallel$ pF
Output:	$Z_{OUT} = R_{OUT} \parallel C_{OUT}$	—	2,1 $\parallel$ 5,3	—	k $\Omega$ $\parallel$ pF
<b>Temperature coefficient of frequency</b>					
	$TC_f$	—	-72	—	ppm/K



SAW Components

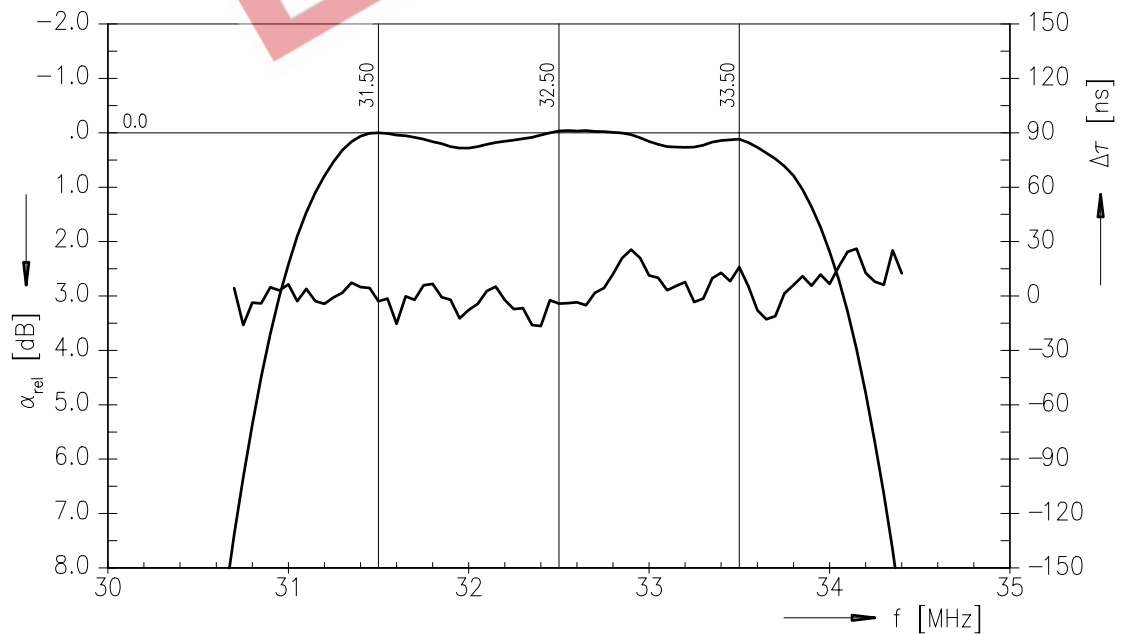
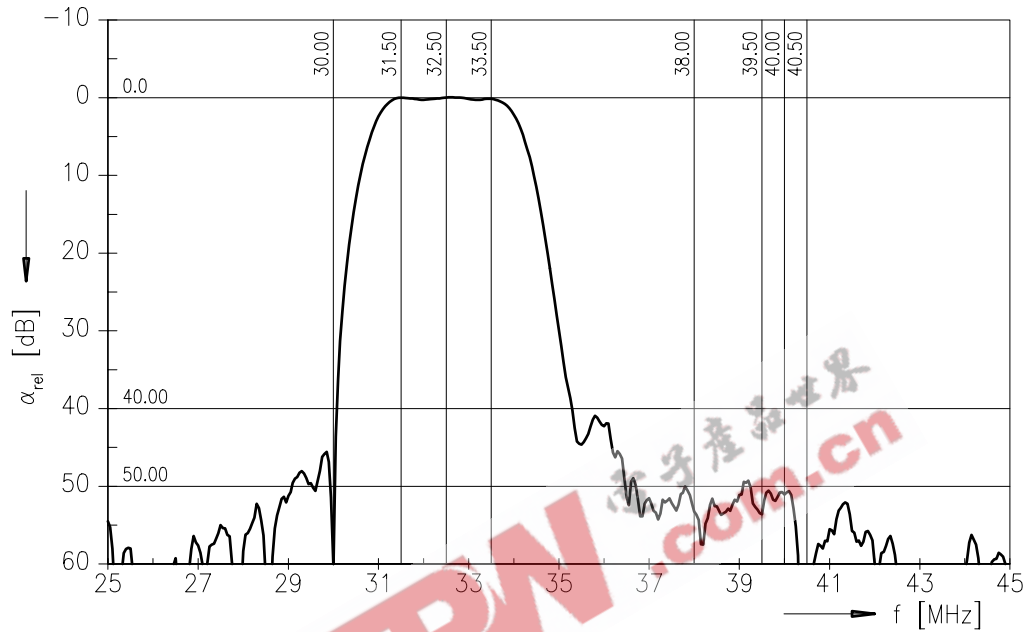
K 9352 M

IF Filter for Audio Applications

38,00 MHz

Data Sheet

Frequency response





SAW Components

K 9352 M

IF Filter for Audio Applications

38,00 MHz

Data Sheet

EEPW 电子产品世界  
.com.cn

**Published by EPCOS AG**

**Surface Acoustic Wave Components Division, SAW CE MM PD**

**P.O. Box 80 17 09, D-81617 München**

© EPCOS AG 2001. All Rights Reserved.

As far as patents or other rights of third parties are concerned, liability is only assumed for components per se, not for applications, processes and circuits implemented within components or assemblies.

The information describes the type of component and shall not be considered as assured characteristics.

Terms of delivery and rights to change design reserved.

For questions on technology, prices and delivery please contact the sales offices of EPCOS AG or the international representatives.

Due to technical requirements components may contain dangerous substances. For information on the type in question please also contact one of our sales offices.