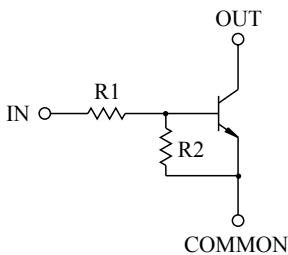


SWITCHING APPLICATION.  
INTERFACE CIRCUIT AND DRIVER CIRCUIT APPLICATION.

### FEATURES

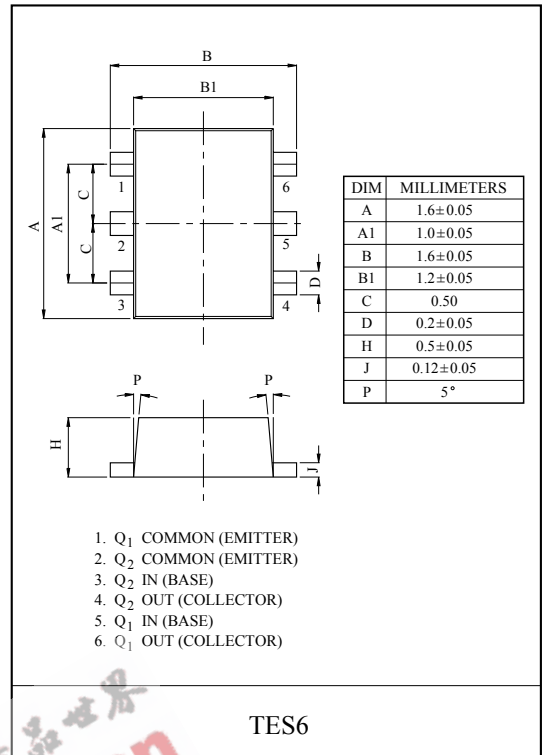
- With Built-in Bias Resistors.
- Simplify Circuit Design.
- Reduce a Quantity of Parts and Manufacturing Process.
- High Packing Density.

### EQUIVALENT CIRCUIT

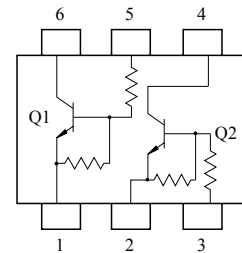


### BIAS RESISTOR VALUES

TYPE NO.	R1(k $\Omega$ )	R2(k $\Omega$ )
KRC821E	4.7	4.7
KRC822E	10	10
KRC823E	22	22
KRC824E	47	47
KRC825E	2.2	47
KRC826E	4.7	47



### EQUIVALENT CIRCUIT (TOP VIEW)



### MAXIMUM RATING (Ta=25°C)

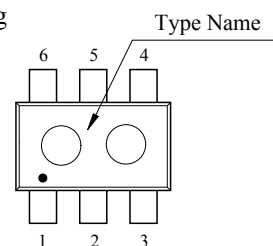
CHARACTERISTIC		SYMBOL	RATING	UNIT
Output Voltage	KRC821E~826E	V <sub>O</sub>	50	V
Input Voltage	KRC821E	V <sub>I</sub>	20, -10	V
	KRC822E		30, -10	
	KRC823E		40, -10	
	KRC824E		40, -10	
	KRC825E		12, -5	
	KRC826E		20, -5	
Output Current	KRC821E~826E	I <sub>O</sub>	100	mA
Power Dissipation		P <sub>D</sub> *	200	mW
Junction Temperature		T <sub>j</sub>	150	°C
Storage Temperature Range		T <sub>stg</sub>	-55~150	°C

\* Total Rating.

### MARK SPEC

TYPE	KRC821E	KRC822E	KRC823E	KRC824E	KRC825E	KRC826E
MARK	YA	YB	YC	YD	YE	YF

### Marking



# KRC821E~KRC826E

## ELECTRICAL CHARACTERISTICS (Ta=25°C)

CHARACTERISTIC		SYMBOL	TEST CONDITION	MIN.	TYP.	MAX.	UNIT
Output Cut-off Current	KRC821E ~ 826E	$I_{O(OFF)}$	$V_O=50V, V_I=0$	-	-	500	nA
DC Current Gain	KRC821E	$G_I$	$V_O=5V, I_O=10mA$	30	55	-	
	KRC822E			50	80	-	
	KRC823E			70	120	-	
	KRC824E			80	200	-	
	KRC825E			80	200	-	
	KRC826E			80	200	-	
Output Voltage	KRC821E ~ 826E	$V_{O(ON)}$	$I_O=10mA, I_I=0.5mA$	-	0.1	0.3	V
Input Voltage (ON)	KRC821E	$V_{I(ON)}$	$V_O=0.2V, I_O=5mA$	-	1.5	2.0	V
	KRC822E			-	1.8	2.4	
	KRC823E			-	2.1	3.0	
	KRC824E			-	2.8	5.0	
	KRC825E			-	0.8	1.1	
	KRC826E			-	0.9	1.3	
Input Voltage (OFF)	KRC821E ~ 824E	$V_{I(OFF)}$	$V_O=5V, I_O=0.1mA$	1.0	1.2	-	V
	KRC825E ~ 826E			0.5	0.65	-	
Transition Frequency	KRC821E ~ 826E	$f_T^*$	$V_O=10V, I_O=5mA$	-	200	-	MHz
Input Current	KRC821E	$I_I$	$V_I=5V$	-	-	1.8	mA
	KRC822E			-	-	0.88	
	KRC823E			-	-	0.36	
	KRC824E			-	-	0.18	
	KRC825E			-	-	3.6	
	KRC826E			-	-	1.8	

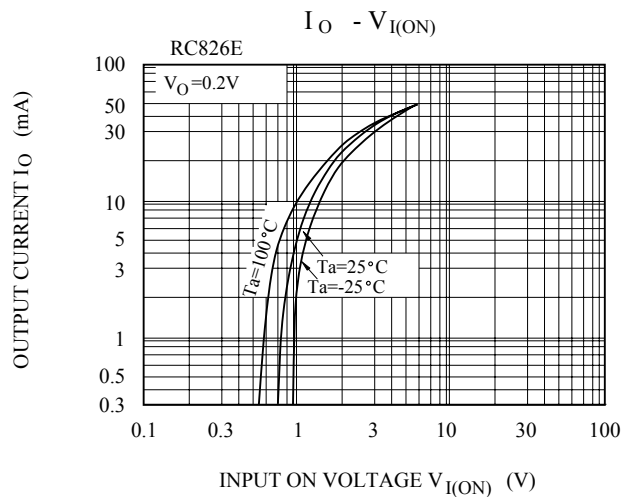
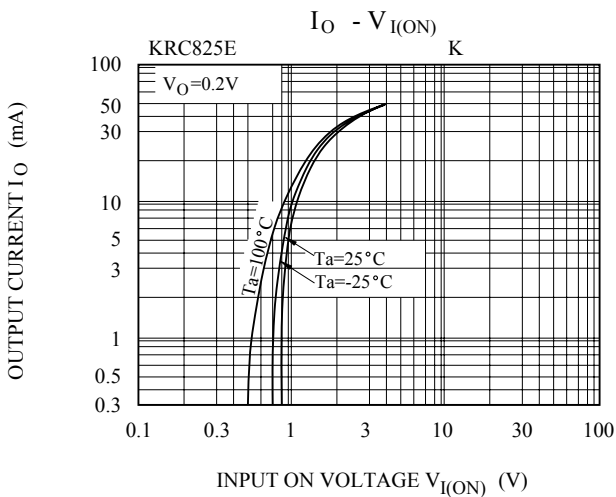
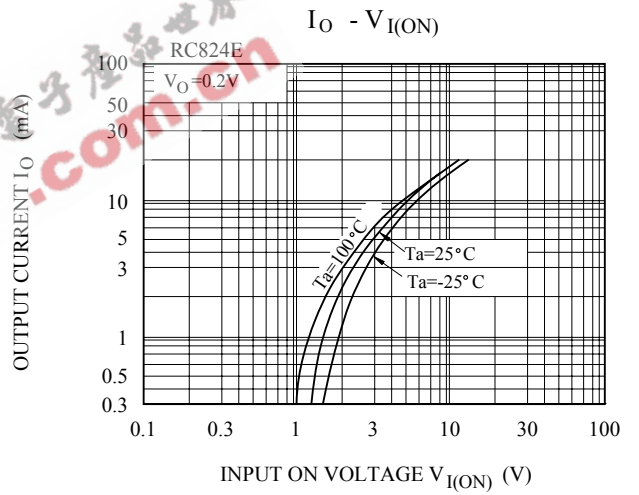
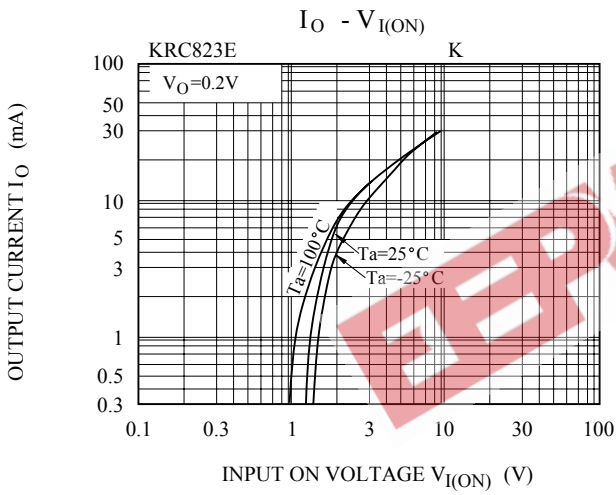
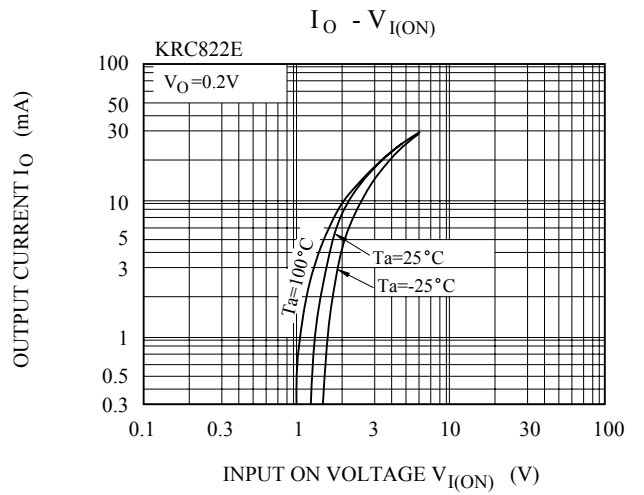
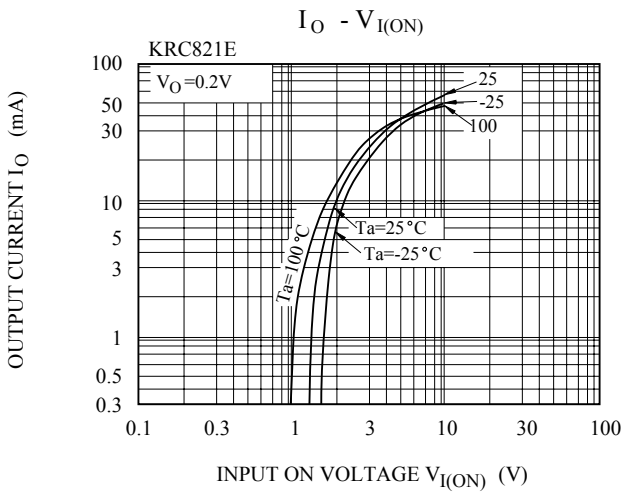
Note : \* Characteristic of Transistor Only.

# KRC821E~KRC826E

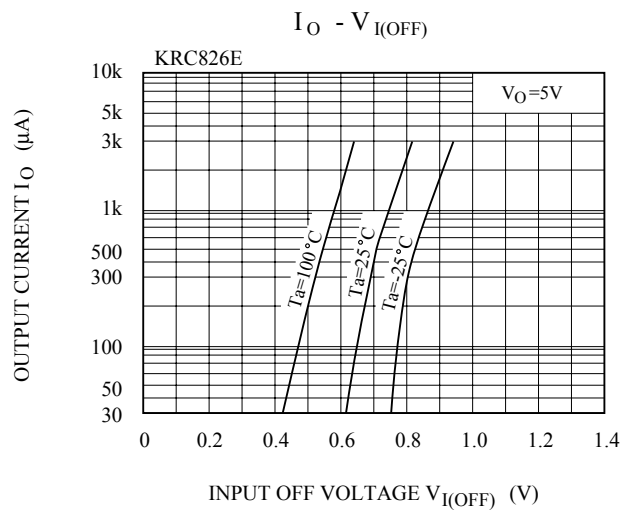
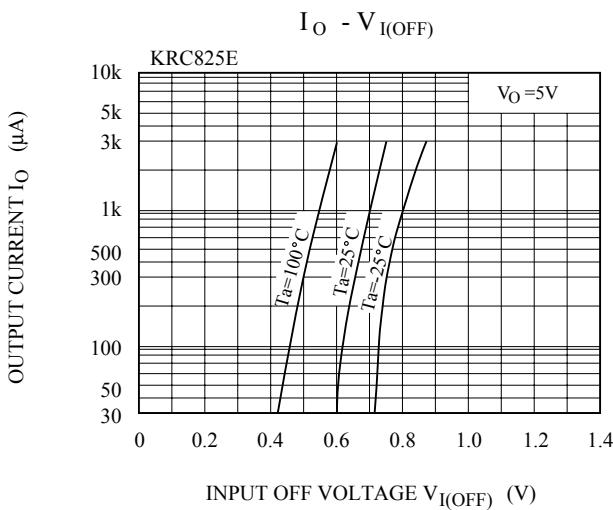
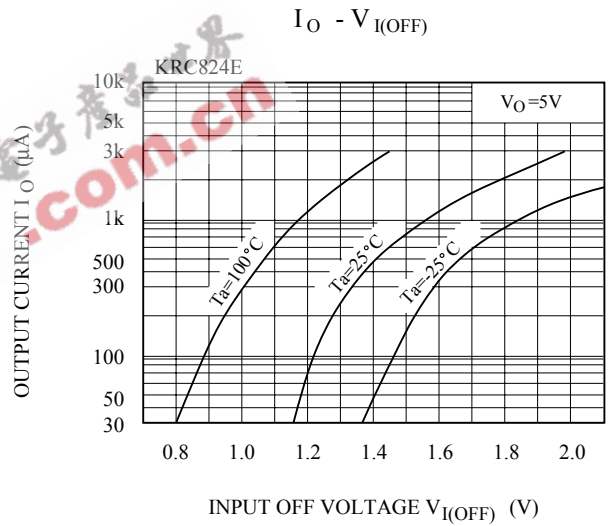
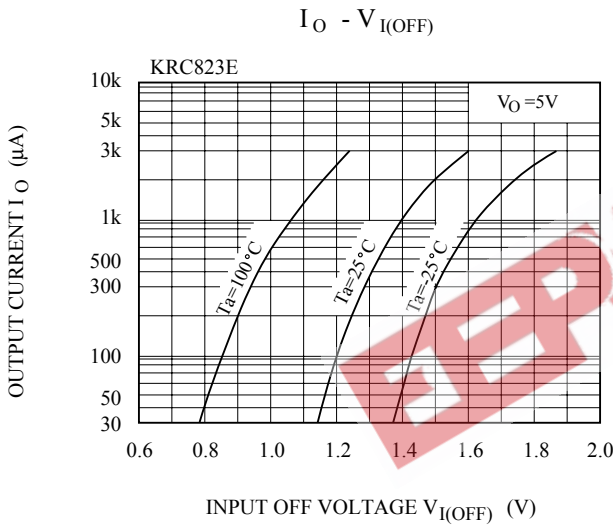
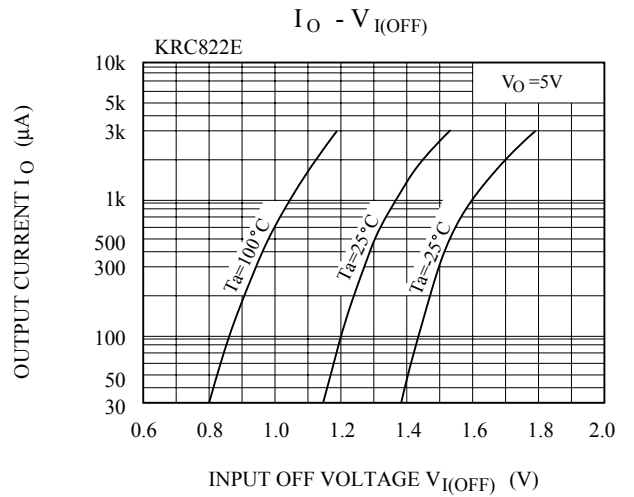
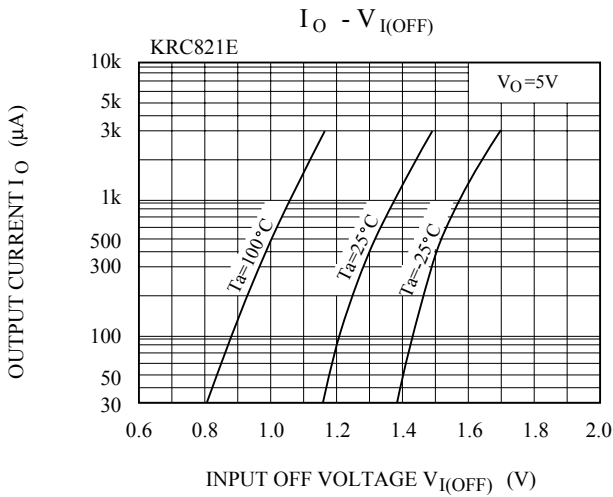
## ELECTRICAL CHARACTERISTICS (Ta=25°C)

CHARACTERISTIC		SYMBOL	TEST CONDITION	MIN.	TYP.	MAX.	UNIT
Switching Time	Rise Time	KRC821E	V <sub>O</sub> =5V V <sub>IN</sub> =5V R <sub>L</sub> =1kΩ	-	0.03	-	μS
		KRC822E		-	0.05	-	
		KRC823E		-	0.12	-	
		KRC824E		-	0.22	-	
		KRC825E		-	0.01	-	
		KRC826E		-	0.03	-	
	Storage Time	KRC821E		-	2.0	-	
		KRC822E		-	2.0	-	
		KRC823E		-	2.0	-	
		KRC824E		-	2.0	-	
		KRC825E		-	2.0	-	
		KRC826E		-	2.0	-	
	Fall Time	KRC821E		-	0.12	-	
		KRC822E		-	0.36	-	
		KRC823E		-	0.35	-	
		KRC824E		-	0.6	-	
		KRC825E		-	0.1	-	
		KRC826E		-	0.19	-	

# KRC821E~KRC826E



# KRC821E~KRC826E



# KRC821E~KRC826E

