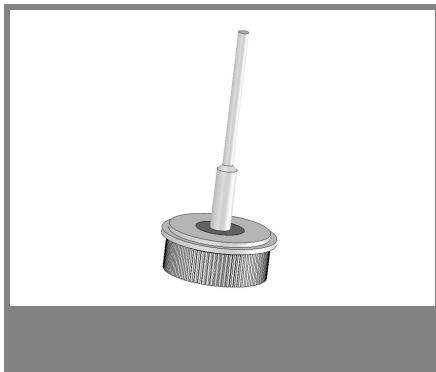


KYW 35A05 ... KYW 35K6



Type	Wired to ANODE	Wired to CATHODE	Repetitive peak reverse voltage V_{RRM} V	Surge peak reverse voltage V_{RSM} V	Maximum forward voltage $T_j = 25\text{ }^\circ\text{C}$ $I_F = 35\text{ A}$ V_F V
KYW 35	KYW 35A05	KYW 35K05	50	60	1,1
KYW 35	KYW 35A1	KYW 35K1	100	120	1,1
KYW 35	KYW 35A2	KYW 35K2	200	240	1,1
KYW 35	KYW 35A3	KYW 35K3	300	360	1,1
KYW 35	KYW 35A4	KYW 35K4	400	480	1,1
KYW 35	KYW 35A6	KYW 35K6	600	700	1,1

Silicon Press-Fit-Diodes

KYW 35A05...KYW 35K6

Forward Current: 35 A

Reverse Voltage: 50 to 600 V

Publish Data

Features

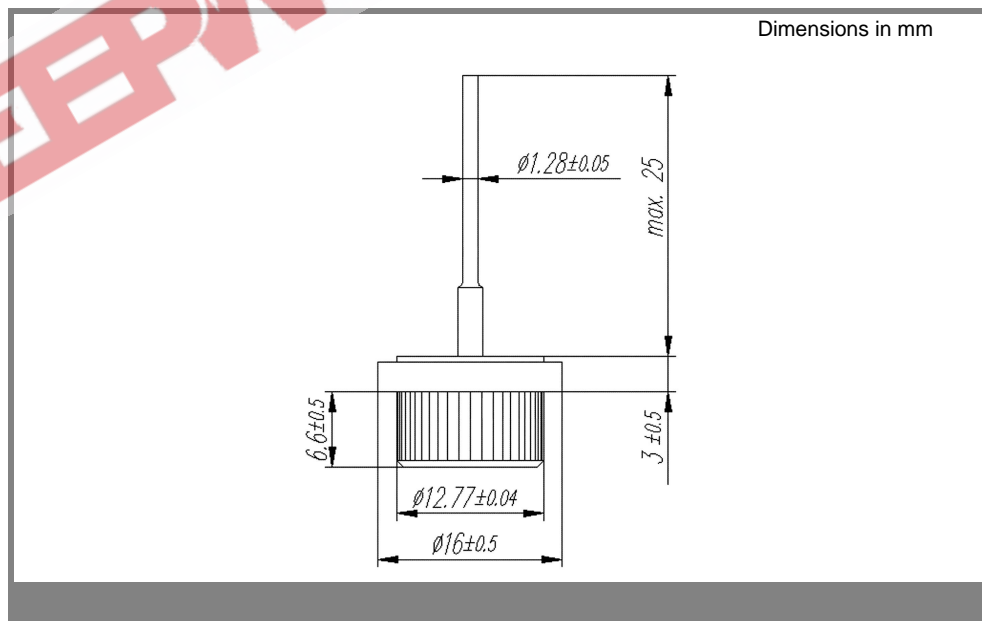
- max. solder temperature 260°C, max. 5
- Standard packaging: bulk

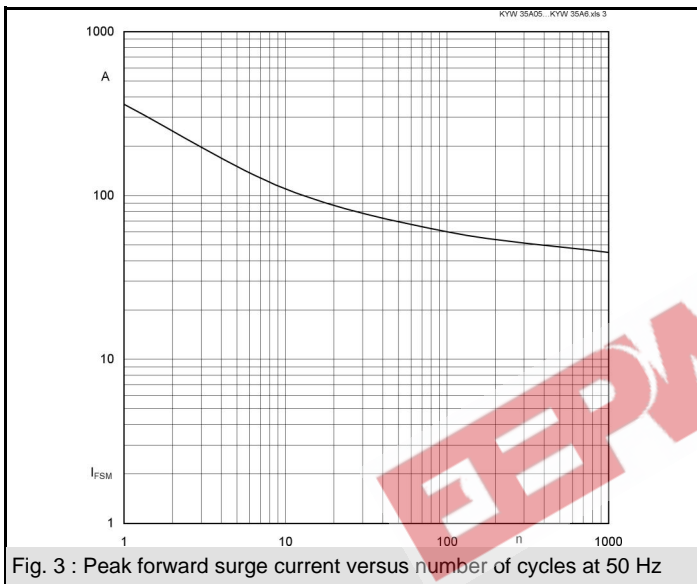
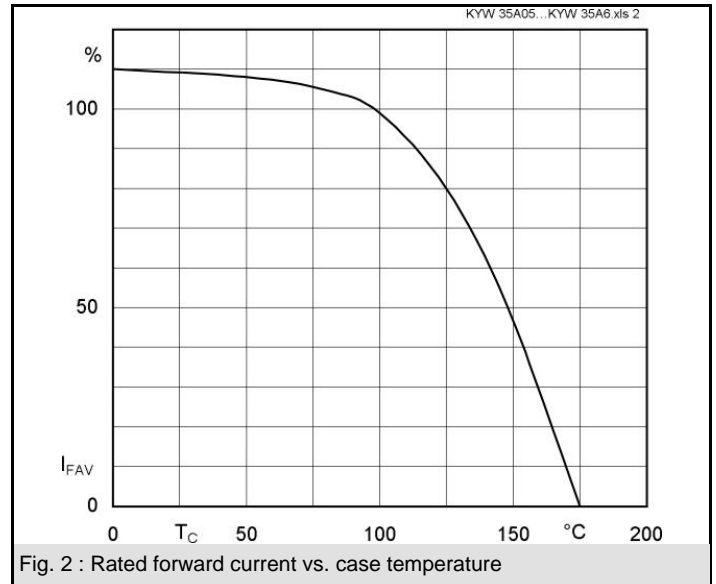
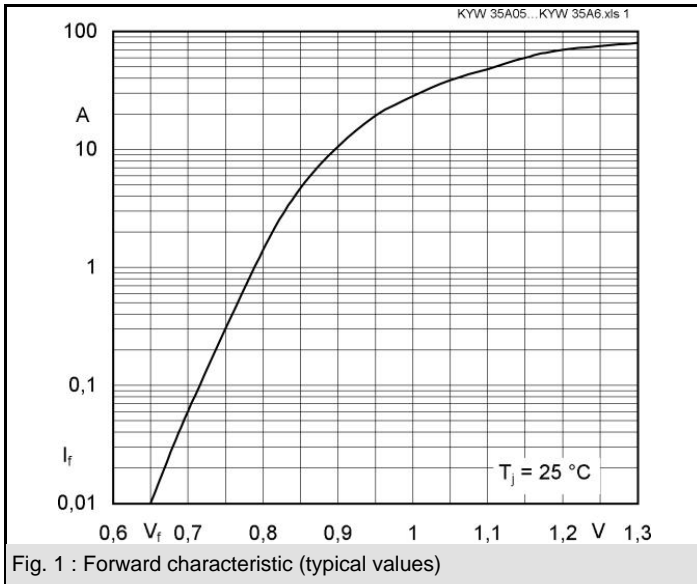
Mechanical Data

- Metal press-fit case with glass seal
- Weight approx. 10 g
- Terminals: plated terminals solderable per IEC 68-2-20
- Mounting position : any

Absolute Maximum Ratings		$T_c = 25\text{ }^\circ\text{C}$, unless otherwise specified	
Symbol	Conditions	Values	Units
I_{FAV}	Max. averaged fwd. current, R-load, $T_c = 100\text{ }^\circ\text{C}$	35	A
I_{FRM}	Repetitive peak forward current $f > 15\text{ Hz}^{1)}$	110	A
I_{FSM}	Peak fwd. surge current 50 Hz half sinus-wave	360	A
I^2t	Rating for fusing, $t < 10\text{ ms}$	660	A ² s
R_{thA}	Thermal resistance junction to case	0,8	K/W
T_j	Operating junction temperature	- 50 ... + 175	°C
T_s	Storage temperature	- 50 ... + 175	°C

Characteristics		$T_c = 25\text{ }^\circ\text{C}$, unless otherwise specified	
Symbol	Conditions	Values	Units
I_R	Maximum leakage current, $T_A = 25\text{ }^\circ\text{C}$; $V_R = V_{RRM}$	100	μA





EEPW.com.cn
 电子产品世界