

# Common Anode Silicon Dual Switching diodes

These Common Cathode Silicon Epitaxial Planar Dual Diodes are designed for use in ultra high speed switching applications. These devices are housed in the SC-59 package which is designed for low power surface mount applications.

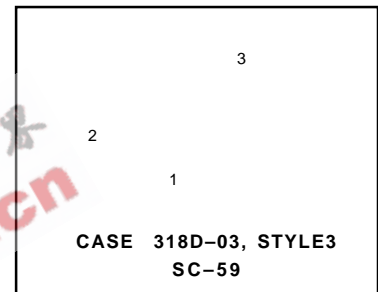
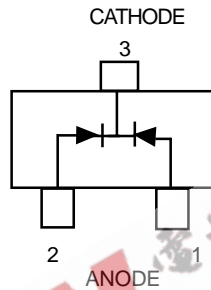
- Fast  $t_{rr}$ , < 3.0 ns
- Low  $C_D$ , < 2.0 pF
- Available in 8 mm Tape and Reel

Use M1MA151/2WKT1 to order the 7 inch/3000 unit reel.

Use M1MA151/2WKT3 to order the 13 inch/10,000 unit reel.

**M1MA151WKT1**  
**M1MA152WKT1**

**SC-59 PACKAGE**  
**COMMON CATHODE**  
**DUAL SWITCHING DIODES**  
**40/80 V-100mA**  
**SURFACE MOUNT**



## MAXIMUM RATINGS ( $T_A = 25^\circ\text{C}$ )

Rating	Symbol	Value	Unit	
Reverse Voltage	M1MA151WAT1	$V_R$	40	Vdc
	M1MA152WAT1		80	
Peak Reverse Voltage	M1MA151WAT1	$V_{RM}$	40	Vdc
	M1MA152WAT1		80	
Forward Current	Single	$I_F$	100	mAdc
	Dual		150	
Peak Forward Current	Single	$I_{FM}$	225	mAdc
	Dual		340	
Peak Forward Surge Current	Single	$I_{FSM}^{(1)}$	500	mAdc
	Dual		750	

## THERMAL CHARACTERISTICS

Rating	Symbo	IMax	Unit
Power Dissipation	$P_D$	200	mW
Junction Temperature	$T_J$	150	$^\circ\text{C}$
Storage Temperature	$T_{stg}$	-55 to +150	$^\circ\text{C}$

## ELECTRICAL CHARACTERISTICS ( $T_A = 25^\circ\text{C}$ )

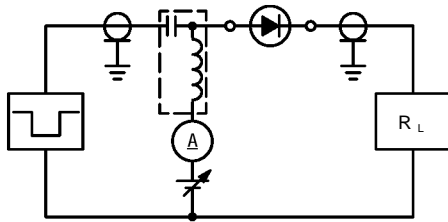
Characteristic	Symbol	Condition	Min	Max	Unit	
Reverse Voltage Leakage Current	M1MA151WAT1	$I_R$	$V_R = 35\text{ V}$	—	0.1	$\mu\text{Adc}$
	M1MA152WAT1		$V_R = 75\text{ V}$	—	0.1	
Forward Voltage	$V_F$	$I_F = 100\text{ mA}$	—	1.2	Vdc	
Reverse Breakdown Voltage	M1MA151WAT1	$V_R$	$I_R = 100\ \mu\text{A}$	40	—	Vdc
	M1MA152WAT1			80	—	
Diode Capacitance	$C_D$	$V_R = 0, f = 1.0\text{ MHz}$	—	2.0	pF	
Reverse Recovery Time	$t_{rr}^{(2)}$	$I_F = 10\text{ mA}, V_R = 6.0\text{ V}, R_L = 100\ \Omega, I_{rr} = 0.1 I_R$	—	3.0	ns	

1.  $t = 1\text{ SEC}$

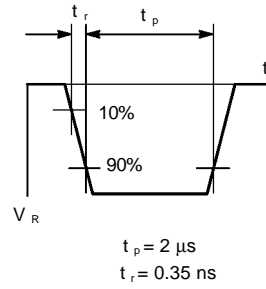
2.  $t_{rr}$  Test Circuit

**M1MA151WKT1 M1MA152WKT1**

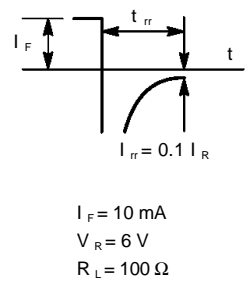
**RECOVERY TIME EQUIVALENT TEST CIRCUIT**



**INPUT PULSE**

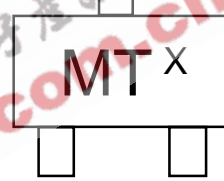


**OUTPUT PULSE**



**DEVICE MARKING—EXAMPLE**

Marking Symbol		
Type No.	151WK	152WK
Symbol	MT	MU



The "X" represents a smaller alpha digit Date Code. The Date Code indicates the actual month in which the part was manufactured.