

# M1MA151WAT1, M1MA152WAT1

Preferred Device

## Common Anode Silicon Dual Switching Diodes

These Common Anode Silicon Epitaxial Planar Dual Diodes are designed for use in ultra high speed switching applications. These devices are housed in the SC-59 package which is designed for low power surface mount applications.

### Features

- Fast  $t_{rr}$ , < 10 ns
- Low  $C_D$ , < 15 pF
- Pb-Free Packages are Available

### MAXIMUM RATINGS ( $T_A = 25^\circ\text{C}$ )

Rating	Symbol	Value	Unit
Reverse Voltage M1MA151WAT1 M1MA152WAT1	$V_R$	40 80	Vdc
Peak Reverse Voltage M1MA151WAT1 M1MA152WAT1	$V_{RM}$	40 80	Vdc
Forward Current Single Dual	$I_F$	100 150	mAdc
Peak Forward Current Single Dual	$I_{FM}$	225 340	mAdc
Peak Forward Surge Current Single Dual	$I_{FSM}$ (Note 1)	500 750	mAdc

### THERMAL CHARACTERISTICS

Rating	Symbol	Max	Unit
Power Dissipation	$P_D$	200	mW
Junction Temperature	$T_J$	150	$^\circ\text{C}$
Storage Temperature	$T_{stg}$	-55 to +150	$^\circ\text{C}$

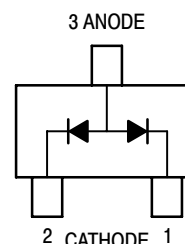
Stresses exceeding Maximum Ratings may damage the device. Maximum Ratings are stress ratings only. Functional operation above the Recommended Operating Conditions is not implied. Extended exposure to stresses above the Recommended Operating Conditions may affect device reliability.

1.  $t = 1 \text{ SEC}$



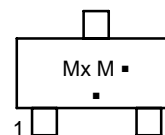
ON Semiconductor®

<http://onsemi.com>



SC-59  
CASE 318D

### MARKING DIAGRAM



Mx = Device Code  
x = N for 151  
O for 152

M = Date Code\*  
■ = Pb-Free Package

(Note: Microdot may be in either location)

\*Date Code orientation may vary depending upon manufacturing location.

### ORDERING INFORMATION

Device	Package	Shipping†
M1MA151WAT1	SC-59	3000/Tape & Reel
M1MA151WAT1G	SC-59 (Pb-Free)	3000/Tape & Reel
M1MA152WAT1	SC-59	3000/Tape & Reel
M1MA152WAT1G	SC-59 (Pb-Free)	3000/Tape & Reel

†For information on tape and reel specifications, including part orientation and tape sizes, please refer to our Tape and Reel Packaging Specifications Brochure, BRD8011/D.

Preferred devices are recommended choices for future use and best overall value.

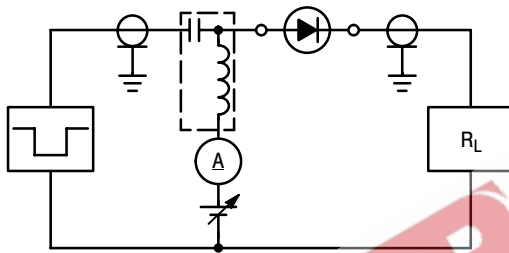
## M1MA151WAT1, M1MA152WAT1

### ELECTRICAL CHARACTERISTICS ( $T_A = 25^\circ\text{C}$ )

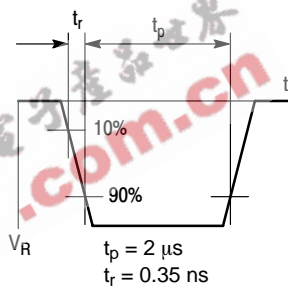
Characteristic	Symbol	Condition	Min	Max	Unit
Reverse Voltage Leakage Current M1MA151WAT1 M1MA152WAT1	$I_R$	$V_R = 35\text{ V}$ $V_R = 75\text{ V}$	–	0.1	$\mu\text{A}$
Forward Voltage	$V_F$	$I_F = 100\text{ mA}$	–	1.2	Vdc
Reverse Breakdown Voltage M1MA151WAT1 M1MA152WAT1	$V_R$	$I_R = 100\ \mu\text{A}$	40 80	–	Vdc
Diode Capacitance	$C_D$	$V_R = 0, f = 1.0\text{ MHz}$	–	15	pF
Reverse Recovery Time (Figure 1)	$t_{rr}$ (Note 2)	$I_F = 10\text{ mA}, V_R = 6.0\text{ V},$ $R_L = 100\ \Omega, I_{rr} = 0.1\ I_R$	–	10	ns

#### 2. $t_{rr}$ Test Circuit

#### RECOVERY TIME EQUIVALENT TEST CIRCUIT



#### INPUT PULSE



#### OUTPUT PULSE

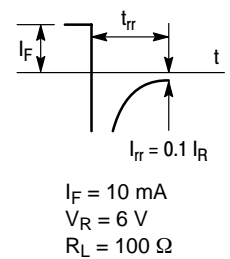


Figure 1. Reverse Recovery Time Equivalent Test Circuit

## M1MA151WAT1, M1MA152WAT1

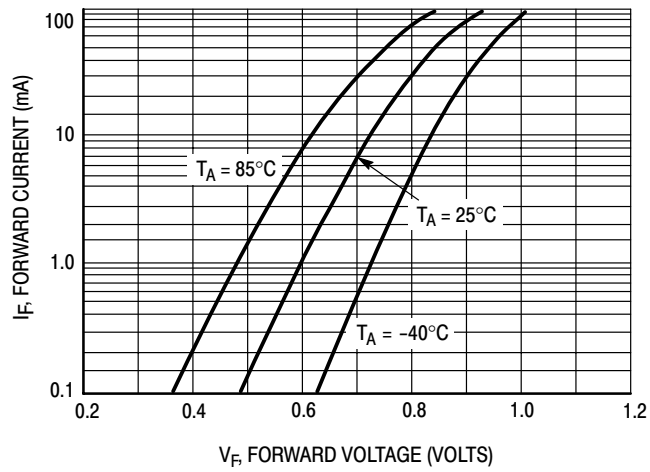


Figure 2. Forward Voltage

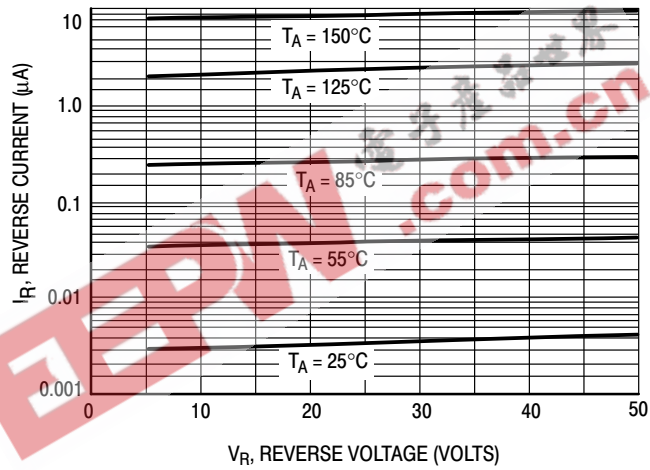


Figure 3. Leakage Current

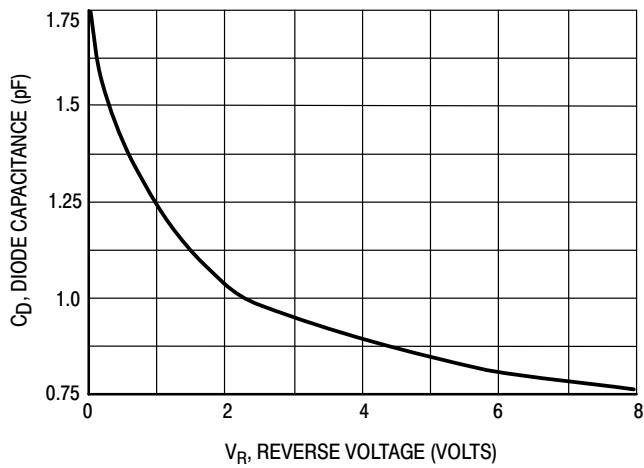
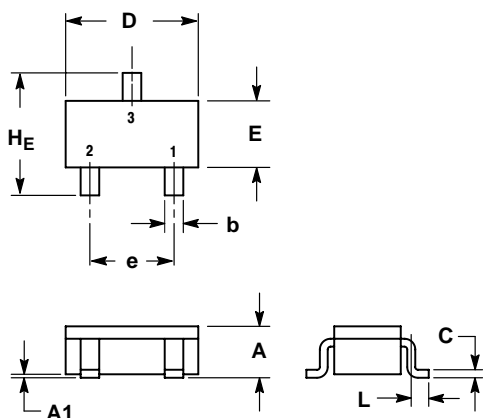


Figure 4. Capacitance

# M1MA151WAT1, M1MA152WAT1

## PACKAGE DIMENSIONS

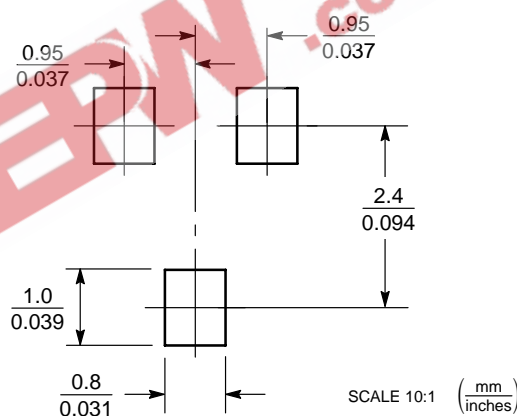
SC-59  
CASE 318D-04  
ISSUE G



- NOTES:  
1. DIMENSIONING AND TOLERANCING PER ANSI Y14.5M, 1982.  
2. CONTROLLING DIMENSION: MILLIMETER.

DIM	MILLIMETERS			INCHES		
	MIN	NOM	MAX	MIN	NOM	MAX
A	1.00	1.15	1.30	0.039	0.045	0.051
A1	0.01	0.06	0.10	0.001	0.002	0.004
b	0.35	0.43	0.50	0.014	0.017	0.020
c	0.09	0.14	0.18	0.003	0.005	0.007
D	2.70	2.90	3.10	0.106	0.114	0.122
E	1.30	1.50	1.70	0.051	0.059	0.067
e	1.70	1.90	2.10	0.067	0.075	0.083
L	0.20	0.40	0.60	0.008	0.016	0.024
HE	2.50	2.80	3.00	0.099	0.110	0.118

### SOLDERING FOOTPRINT\*



\*For additional information on our Pb-Free strategy and soldering details, please download the ON Semiconductor Soldering and Mounting Techniques Reference Manual, SOLDERRM/D.

ON Semiconductor and are registered trademarks of Semiconductor Components Industries, LLC (SCILLC). SCILLC reserves the right to make changes without further notice to any products herein. SCILLC makes no warranty, representation or guarantee regarding the suitability of its products for any particular purpose, nor does SCILLC assume any liability arising out of the application or use of any product or circuit, and specifically disclaims any and all liability, including without limitation special, consequential or incidental damages. "Typical" parameters which may be provided in SCILLC data sheets and/or specifications can and do vary in different applications and actual performance may vary over time. All operating parameters, including "Typicals" must be validated for each customer application by customer's technical experts. SCILLC does not convey any license under its patent rights nor the rights of others. SCILLC products are not designed, intended, or authorized for use as components in systems intended for surgical implant into the body, or other applications intended to support or sustain life, or for any other application in which the failure of the SCILLC product could create a situation where personal injury or death may occur. Should Buyer purchase or use SCILLC products for any such unintended or unauthorized application, Buyer shall indemnify and hold SCILLC and its officers, employees, subsidiaries, affiliates, and distributors harmless against all claims, costs, damages, and expenses, and reasonable attorney fees arising out of, directly or indirectly, any claim of personal injury or death associated with such unintended or unauthorized use, even if such claim alleges that SCILLC was negligent regarding the design or manufacture of the part. SCILLC is an Equal Opportunity/Affirmative Action Employer. This literature is subject to all applicable copyright laws and is not for resale in any manner.

### PUBLICATION ORDERING INFORMATION

**LITERATURE FULFILLMENT:**  
Literature Distribution Center for ON Semiconductor  
P.O. Box 61312, Phoenix, Arizona 85082-1312 USA  
**Phone:** 480-829-7710 or 800-344-3860 Toll Free USA/Canada  
**Fax:** 480-829-7709 or 800-344-3867 Toll Free USA/Canada  
**Email:** orderlit@onsemi.com

**N. American Technical Support:** 800-282-9855 Toll Free  
USA/Canada

**Japan:** ON Semiconductor, Japan Customer Focus Center  
2-9-1 Kamimeguro, Meguro-ku, Tokyo, Japan 153-0051  
**Phone:** 81-3-5773-3850

**ON Semiconductor Website:** <http://onsemi.com>

**Order Literature:** <http://www.onsemi.com/litorder>

For additional information, please contact your local Sales Representative.