



MC12002

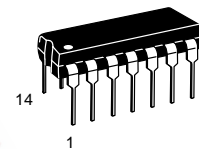
Analog Mixer

The MC12002 is a double balanced analog mixer, including an input amplifier feeding the mixer carrier port and a temperature compensated bias regulator. The input circuits for both the amplifier and mixer are differential amplifier circuits. The on-chip regulator provides all of the required biasing.

This circuit is designed for use as a balanced mixer in high-frequency wide-band circuits. Other typical applications include suppressed carrier and amplitude modulation, synchronous AM detection, FM detection, phase detection, and frequency doubling, at frequencies up to UHF.

ANALOG MIXER

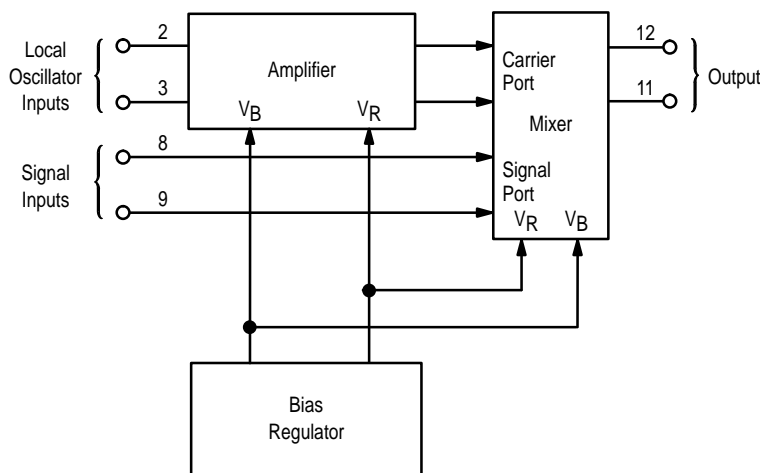
SEMICONDUCTOR TECHNICAL DATA



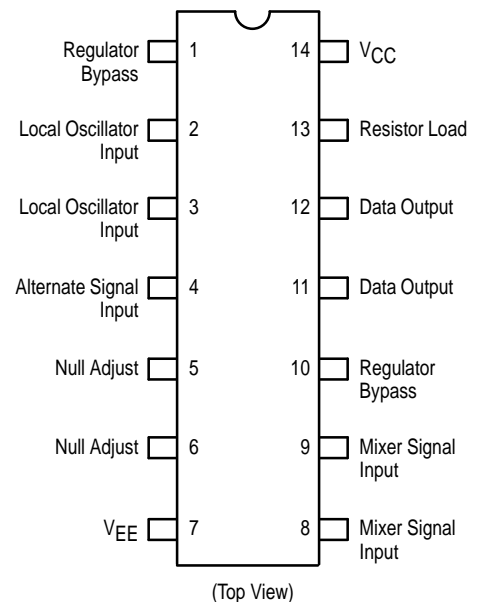
P SUFFIX
PLASTIC PACKAGE
CASE 646



Figure 1. Logic Diagram



PIN CONNECTIONS



ORDERING INFORMATION

Device	Operating Temperature Range	Package
MC12002P	T _A = -30° to +85°C	Plastic

MC12002

ELECTRICAL CHARACTERISTICS										TEST VOLTAGE VALUES				
										Volts				
										V _{IHmax}	V _{ILmin}	V _{CC}		
										+2.9	+2.0	+5.0		
Characteristic	Symbol	Pin Under Test	Test Limits						VOLTAGE APPLIED TO PINS LISTED BELOW			Gnd		
			-30°C		+25°C		+85°C		Unit	V _{IHmax}	V _{ILmin}		V _{CC}	
			Min	Max	Min	Max	Min	Max						
Power Supply Drain	I _{CC}	14	—	—	—	16	—	—	mAdc	—	—	11,12,14	5,6,7	
Input Current	I _{inH}	2	—	—	—	0.75	—	—	mAdc	2	—	11,12,14	5,6,7	
		3	—	—	—	0.75	—	—	mAdc	3	—	11,12,14	5,6,7	
		8	—	—	—	0.75	—	—	mAdc	8	—	11,12,14	5,6,7	
		9	—	—	—	0.75	—	—	mAdc	9	—	11,12,14	5,6,7	
	I _{inL}	2	—	—	-0.7	—	—	—	mAdc	—	2	11,12,14	5,6,7	
		3	—	—	-0.7	—	—	—	mAdc	—	3	11,12,14	5,6,7	
		8	—	—	-0.7	—	—	—	mAdc	—	8	11,12,14	5,6,7	
		9	—	—	-0.7	—	—	—	mAdc	—	9	11,12,14	5,6,7	
Output Current	I _{O1}	11	—	—	0.7	1.3	—	—	mAdc	—	—	11,12,14	7	
		12	—	—	0.7	1.3	—	—	mAdc	—	—	11,12,14	7	
	I _{O2}	11	—	—	2.1	3.9	—	—	mAdc	—	—	11,12,14	5,6,7	
		12	—	—	2.1	3.9	—	—	mAdc	—	—	11,12,14	5,6,7	
	I _{out}	11	—	—	4.2	7.8	—	—	mAdc	2,9	—	11,12,14	5,6,7	
		11	—	—	4.2	7.8	—	—	mAdc	3,8	—	11,12,14	5,6,7	
		12	—	—	4.2	7.8	—	—	mAdc	2,8	—	11,12,14	5,6,7	
		12	—	—	4.2	7.8	—	—	mAdc	3,9	—	11,12,14	5,6,7	
Differential Current	ΔI _{O1}	11,12	-100	+100	-100	+100	-100	+100	μAdc	—	—	11,12,14	7	
	ΔI _{O2}	11,12	-200	+200	-200	+200	-200	+200	μAdc	—	—	11,12,14	5,6,7	
Bias Voltage	V _{Bias}	1	2.33	2.53	2.32	2.52	2.3	2.5	Vdc	—	—	11,12,14	5,6,7	
		4	390	590	400	600	410	610	mVdc	—	—	11,12,14	5,6,7	
		5	275	415	285	425	295	435	mVdc	—	—	11,12,14	7	
		6	275	415	285	425	295	435	mVdc	—	—	11,12,14	7	
		10	1.26	1.46	1.185	1.385	1.105	1.305	Vdc	—	—	11,12,14	5,6,7	
AC Gain (See Figure 1) (Frequency = 100 MHz) *Note	A _V	11	—	—	5.0	—	—	—	V/V	Pulse In 2	Pulse Out 11	-3.0 V 9	Gnd 14	V _{EE} 7
		11	—	—	0.28	—	—	—	V/V	8	11	3	14	7

NOTE: *Note: AC Gain is a function of collector load impedance.

MC12002

Figure 2. Analog Mixer Circuit Schematic

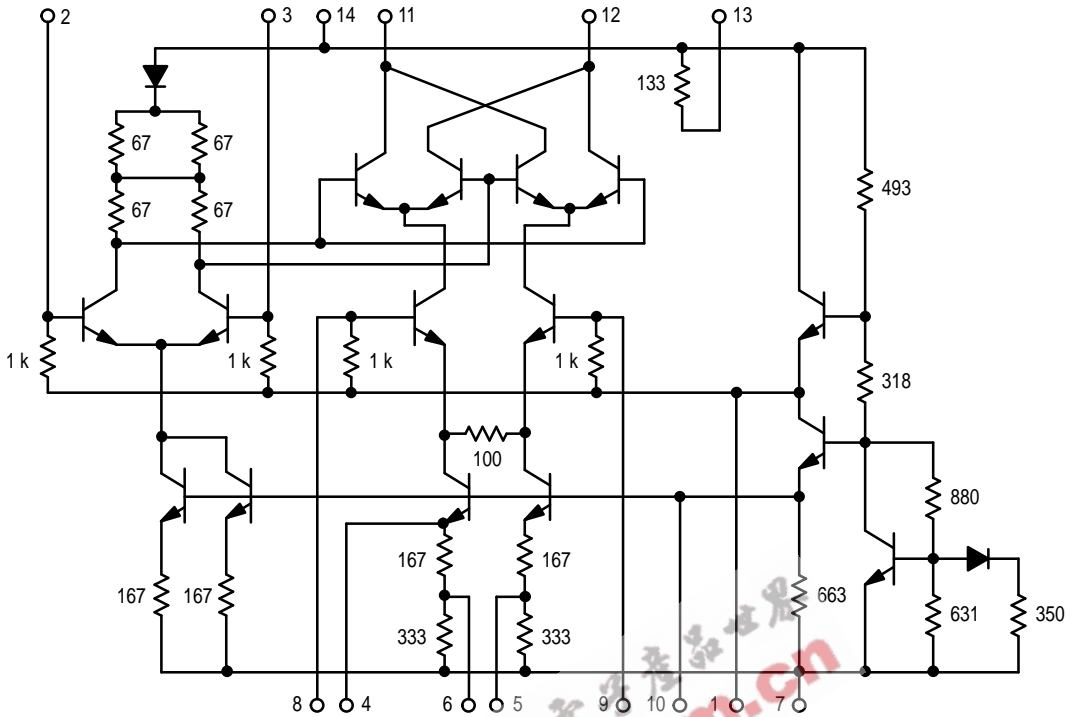
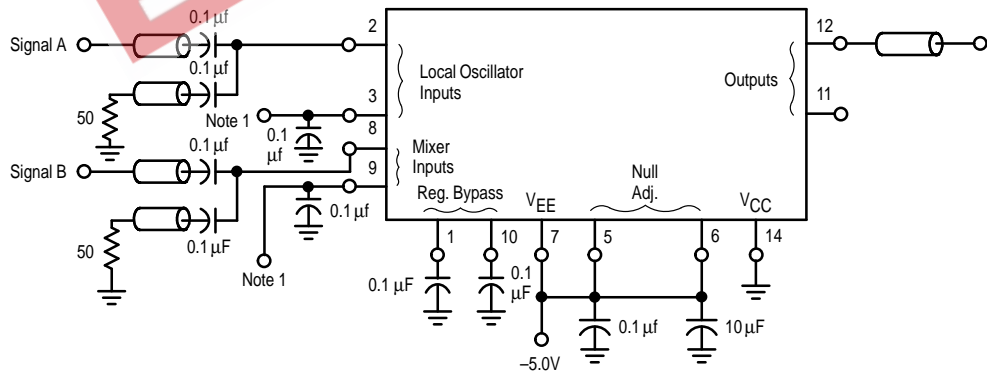


Figure 3. AC Gain Test



Note 1:

$V_{IL} = -3.0$ V on pin 3 when pin 8 is under test.
 $V_{IL} = -3.0$ V on pin 9 when pin 2 is under test.

Signal A = 30 mVpp

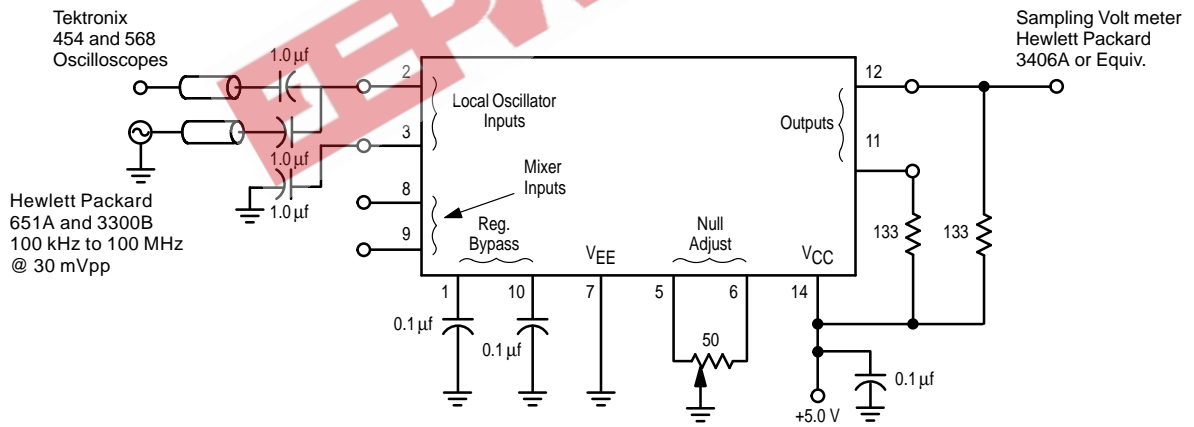
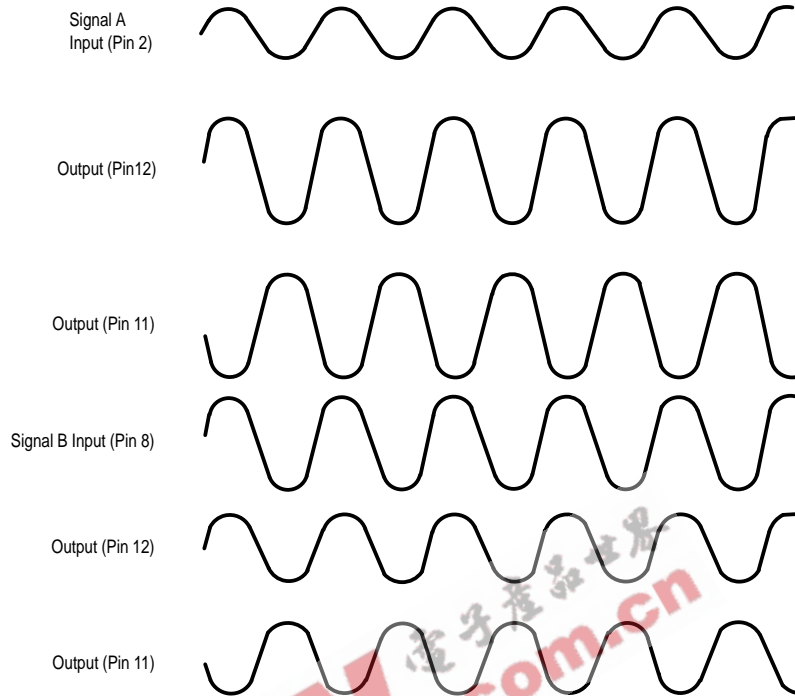
Signal B = 300 mVpp

Freq. = 100 MHz

All input and output cables to the scope are equal lengths of 50-ohm coaxial cable. The unused output is connected to a 50-ohm resistor to ground.

MC12002

Figure 4. Carrier Feedthrough Test Circuits



Notes:

- Test 1 – Adjust potentiometer for carrier null at $f_c = 100$ kHz.
- Test 2 – Connect pins 5 and 6 to Gnd.

All Input and output cables to the scope are equal lengths of 50-ohm coaxial cable.

MC12002

Figure 5. Carrier Feedthrough versus Frequency (Test 1)

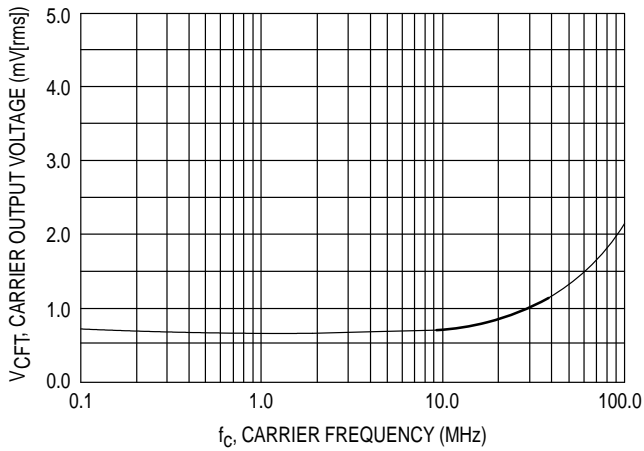


Figure 6. Carrier Feedthrough versus Frequency (Test 2)

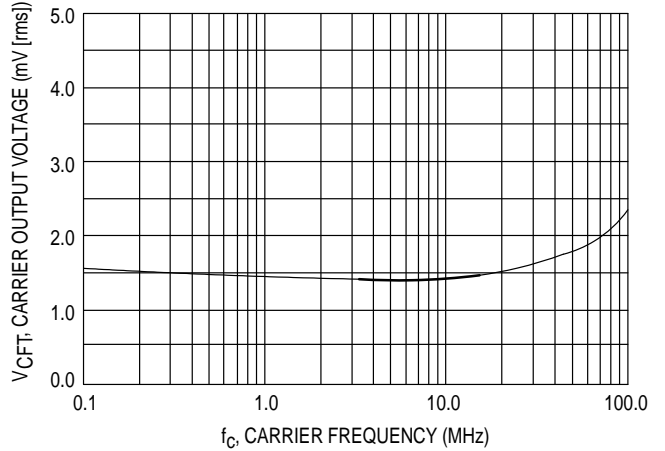
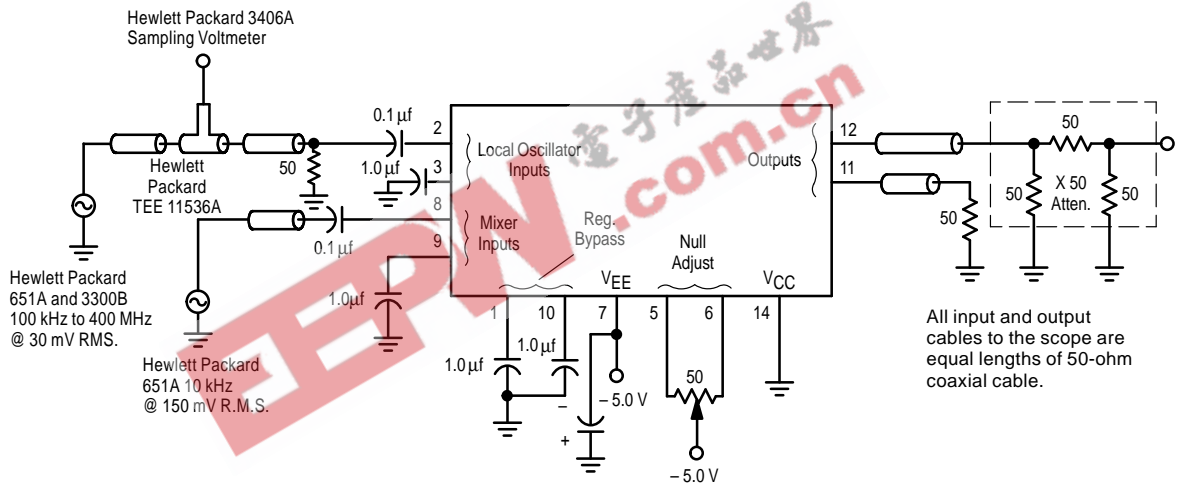


Figure 7. Carrier Suppression Test Circuit



- Notes:
- Test 1 – Adjust potentiometer for carrier null @ $f_c = 100$ kHz
 - Test 2 – Connect pins 5 and 6 to -5.0 volts
 - Test 3 – Adjust potentiometer for carrier null @ 25°C

Figure 8. Carrier Suppression versus Frequency (Test 1)

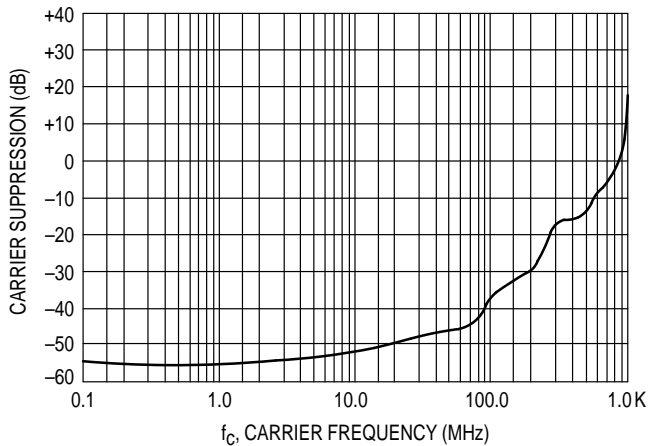
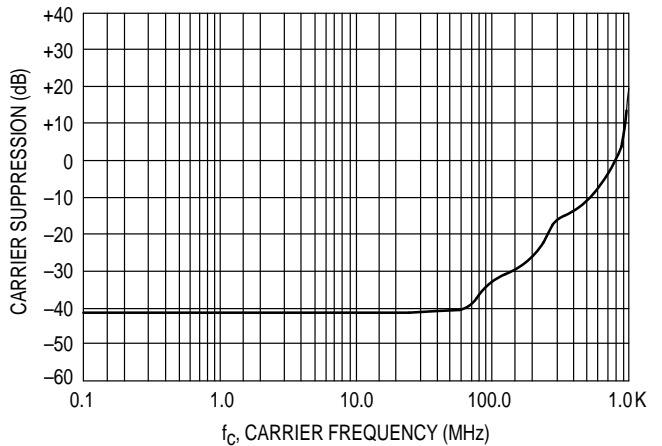


Figure 9. Carrier Suppression versus Frequency (Test 2)



MC12002

Figure 10. Carrier Suppression versus Temperature

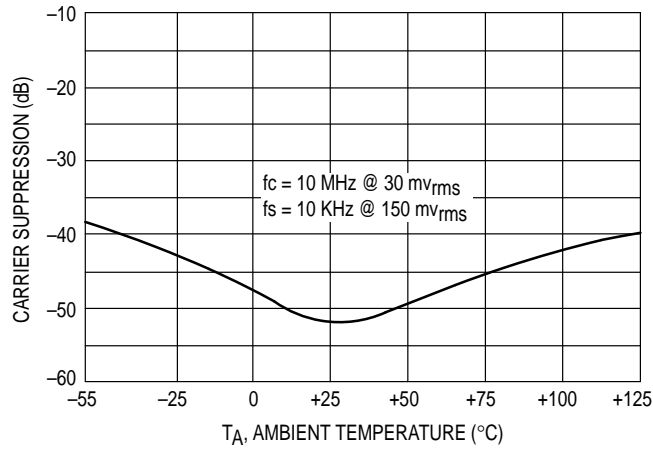
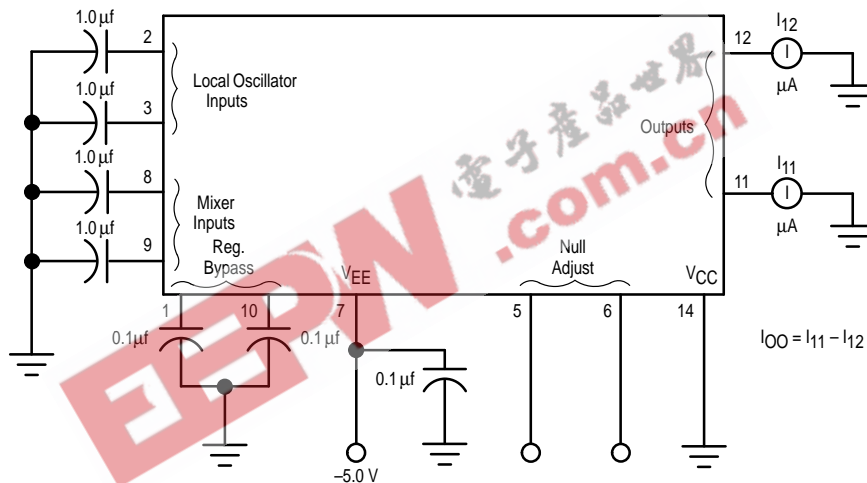


Figure 11. Output Offset Current (I_{OO}) versus Temperature



Notes:
 Test 1 – Pins 5 and 6 left open
 Test 2 – Pins 5 and 6 are tied to -5.0 volts

Figure 12. Output Offset Current versus Temperature

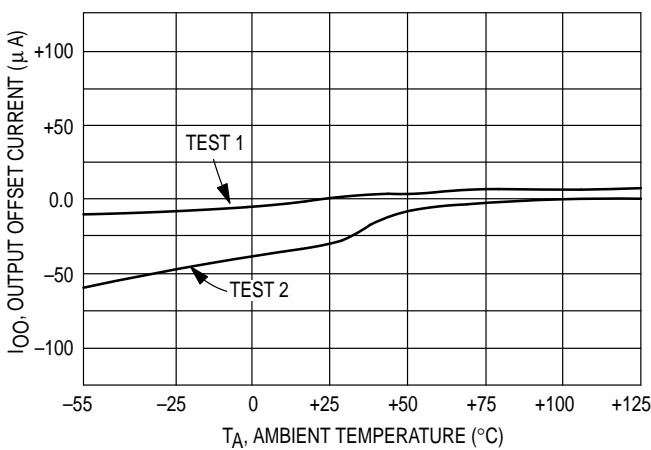
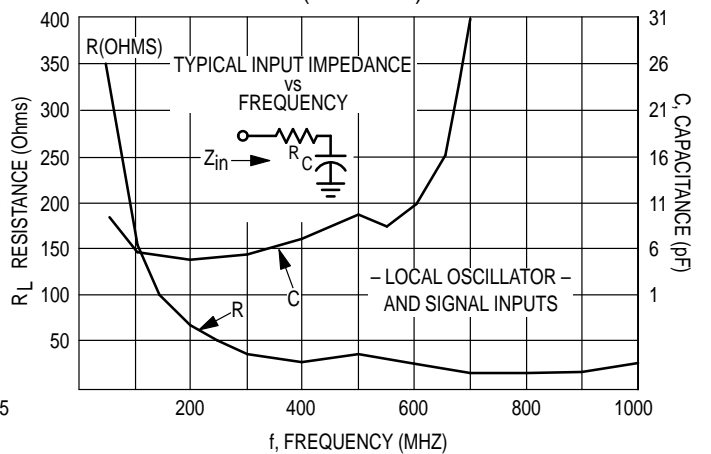


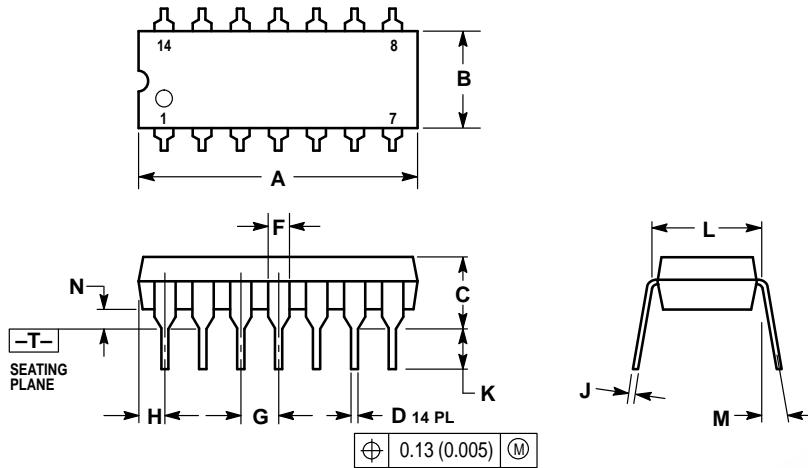
Figure 13. Typical Input Impedance versus Frequency (No Circuit)



MC12002

OUTLINE DIMENSIONS

P SUFFIX
PLASTIC PACKAGE
CASE 646-06
ISSUE M



NOTES:


1. DIMENSIONING AND TOLERANCING PER ANSI Y14.5M, 1982.
2. CONTROLLING DIMENSION: INCH.
3. DIMENSION L TO CENTER OF LEADS WHEN FORMED PARALLEL.
4. DIMENSION B DOES NOT INCLUDE MOLD FLASH.
5. ROUNDED CORNERS OPTIONAL.

DIM	INCHES		MILLIMETERS	
	MIN	MAX	MIN	MAX
A	0.715	0.770	18.16	18.80
B	0.240	0.260	6.10	6.60
C	0.145	0.185	3.69	4.69
D	0.015	0.021	0.38	0.53
F	0.040	0.070	1.02	1.78
G	0.100 BSC		2.54 BSC	
H	0.052	0.095	1.32	2.41
J	0.008	0.015	0.20	0.38
K	0.115	0.135	2.92	3.43
L	0.290	0.310	7.37	7.87
M	10°		10°	
N	0.015	0.039	0.38	1.01

EEPW.com.cn 电子产品世界

MC12002

EEPW 电子產品世界
.com.cn

Motorola reserves the right to make changes without further notice to any products herein. Motorola makes no warranty, representation or guarantee regarding the suitability of its products for any particular purpose, nor does Motorola assume any liability arising out of the application or use of any product or circuit, and specifically disclaims any and all liability, including without limitation consequential or incidental damages. "Typical" parameters which may be provided in Motorola data sheets and/or specifications can and do vary in different applications and actual performance may vary over time. All operating parameters, including "Typicals" must be validated for each customer application by customer's technical experts. Motorola does not convey any license under its patent rights nor the rights of others. Motorola products are not designed, intended, or authorized for use as components in systems intended for surgical implant into the body, or other applications intended to support or sustain life, or for any other application in which the failure of the Motorola product could create a situation where personal injury or death may occur. Should Buyer purchase or use Motorola products for any such unintended or unauthorized application, Buyer shall indemnify and hold Motorola and its officers, employees, subsidiaries, affiliates, and distributors harmless against all claims, costs, damages, and expenses, and reasonable attorney fees arising out of, directly or indirectly, any claim of personal injury or death associated with such unintended or unauthorized use, even if such claim alleges that Motorola was negligent regarding the design or manufacture of the part. Motorola and  are registered trademarks of Motorola, Inc. Motorola, Inc. is an Equal Opportunity/Affirmative Action Employer.

Mfax is a trademark of Motorola, Inc.

How to reach us:

USA/EUROPE/Locations Not Listed: Motorola Literature Distribution;
P.O. Box 5405, Denver, Colorado 80217. 1-303-675-2140 or 1-800-441-2447

JAPAN: Nippon Motorola Ltd.: SPD, Strategic Planning Office, 141,
4-32-1 Nishi-Gotanda, Shagawa-ku, Tokyo, Japan. 03-5487-8488

Customer Focus Center: 1-800-521-6274

Mfax™: RMFAX0@email.sps.mot.com – TOUCHTONE 1-602-244-6609
Motorola Fax Back System – US & Canada ONLY 1-800-774-1848
– <http://sps.motorola.com/mfax/>

ASIA/PACIFIC: Motorola Semiconductors H.K. Ltd.: 8B Tai Ping Industrial Park,
51 Ting Kok Road, Tai Po, N.T., Hong Kong. 852-26629298

HOME PAGE: <http://motorola.com/sps/>



MOTOROLA



MC12002/D