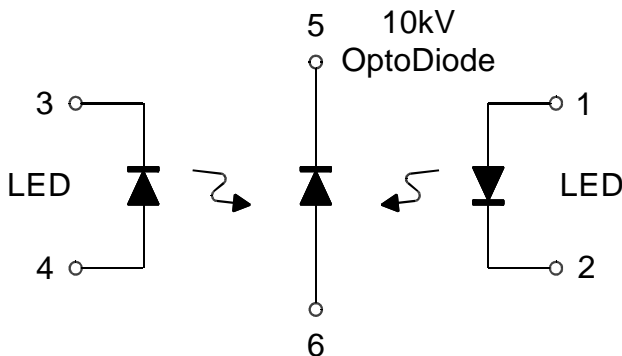
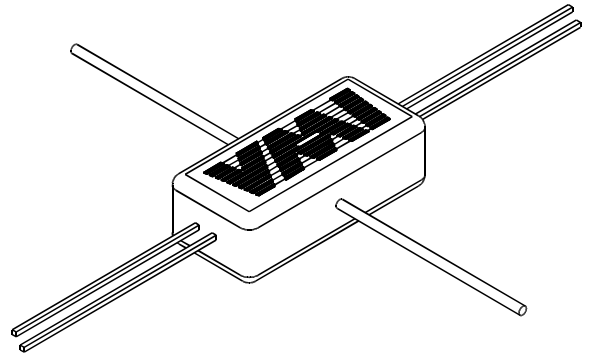


Opto Coupler

OC100



ABSOLUTE MAXIMUM RATINGS

LED

- Forward DC Current **100 mA**
- Surge Current **2.5 A**
- Reverse Voltage **5 V**
- Power Dissipation **200 mW**
at 25°C

Photodiode

- Reverse Voltage **10,000 V**
- Power Dissipation **1W**

- Storage Temperature
-40°C to +125°C
- Operating Temperature
-40°C to +100°C
- Isolation Test Voltage
25 kV (Pins 1, 2, 3, & 4 tied
to pins 5 & 6)

ELECTRICAL CHARACTERISTICS

LED

- Forward Voltage (If = 100 mA) **1.5 V**
- Reverse Leakage Current **10nA**
VR = 5 V

Photodiode

- Forward Voltage (If = 0.6 A) **12.0 V MAX**
- Reverse Leakage Current Typical
VR = 10 kV, I_{LED} = 0 mA **250 nA**
VR = 10 kV, I_{LED} = 100 mA **100 µA**

Coupled

- DC Current Transfer Ratio **0.1%**
- T_{ON} **2 µs**
- T_{OFF} **2 µs**

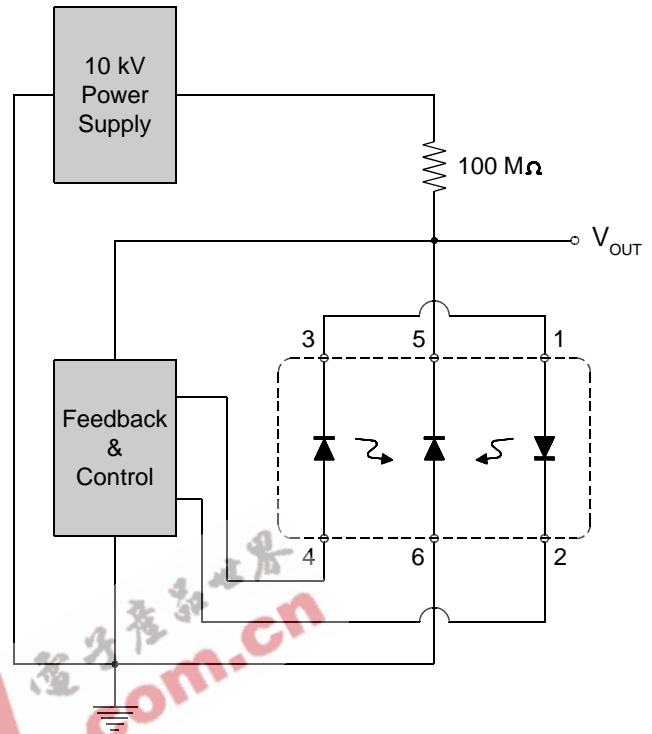
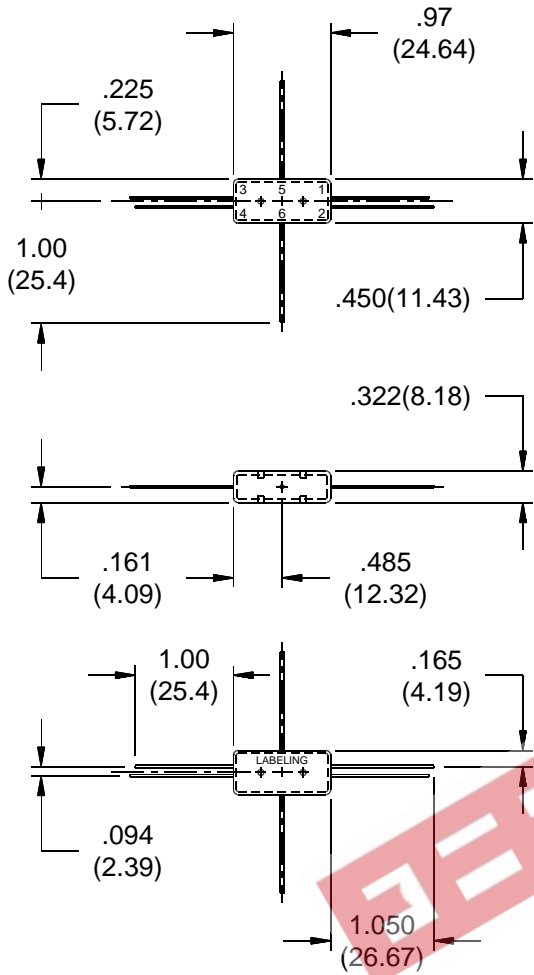
All ratings at 25°C unless otherwise noted.



VOLTAGE MULTIPLIERS INC.
8711 W. Roosevelt Ave.
Visalia, CA 93291

TEL 559-651-1402
FAX 559-651-0740
www.voltagemultipliers.com

OC100



Typical HV Linear Regulator Circuit

- Select resistor value to optimize circuit for V_{OUT} and I_{OUT} range.

