

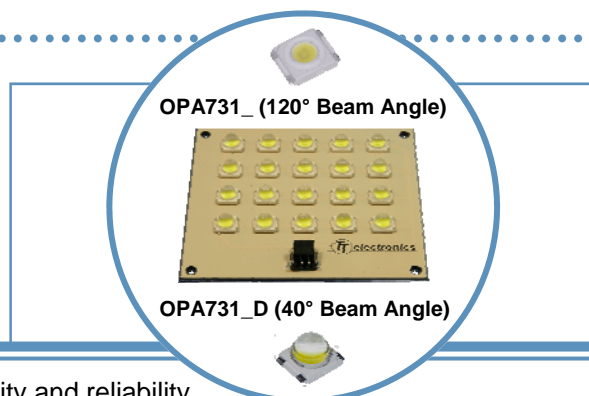
OPA731 Series

20 Watt Light Flood on Another Linear Heat Spreader



OPA731 Series

- 20, 1 watt LEDs per square substrate
- Mono-color per strip (Blue, Green, Red, Yellow, White)
- Two component beam angle options (120° or 40°)
- Universal connector (Tyco 2-292173-2 mates with 173977-2)
- RoHS Compliant

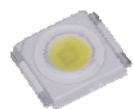


The **OPA731** Series are designed for areas where lighting intensity and reliability are essential. The light beam angles of 40° and 120° are ideal for illuminating small and medium size areas while requiring minimal space. A patented substrate is used to ensure the best heat dissipation of any light assembly in the industry.

For custom colors and design contact your OPTeK representative.

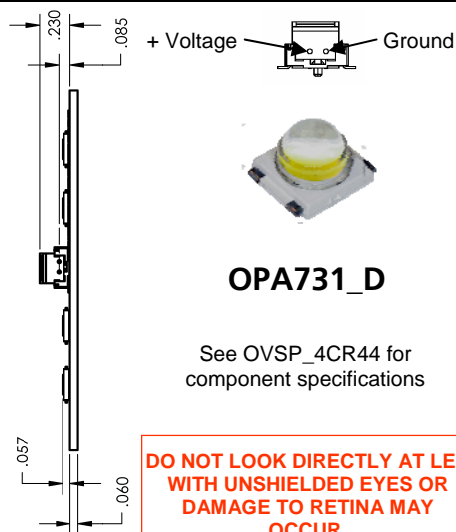
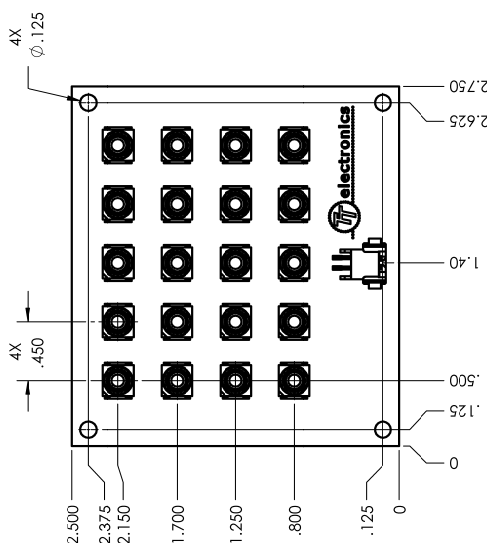
Electrical / Optical Characteristics: $T_A=25^{\circ}\text{C}$, $I_F=1.4\text{A}$

Part Number	Typical Forward Voltage (V)	Luminous Flux (lm)	Beam Angle	Color	Dominant Wavelength
OPA731Y	12.5	700	120°	Yellow	587 nm
OPA731B	18.0	180		Blue	470 nm
OPA731G	18.0	960		Green	530 nm
OPA731R	12.5	520		Red	625 nm
OPA731W	18.0	960		White	6,500°K
OPA731YD	12.5	700	40°	Yellow	587 nm
OPA731BD	18.0	180		Blue	470 nm
OPA731GD	18.0	960		Green	530 nm
OPA731RD	12.5	520		Red	625 nm
OPA731WD	18.0	960		White	6,500°K



OPA731_

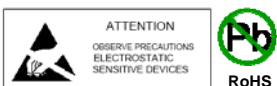
See OVSP_BCR4 for component specifications



OPA731_D

See OVSP_4CR44 for component specifications

DO NOT LOOK DIRECTLY AT LED WITH UNSHIELDED EYES OR DAMAGE TO RETINA MAY OCCUR.



OPTeK reserves the right to make changes at any time in order to improve design and to supply the best product possible.