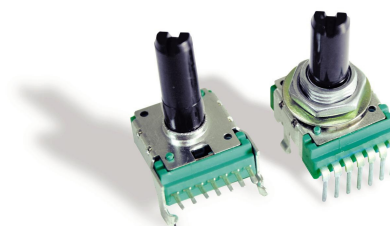


**Model P140**  
**14mm Rotary Potentiometer**  
**Dual Unit**  
**Conductive Plastic Element**  
**With / Without Bushing**  
**Insulated Shaft**  
**RoHS Compliant**



**MODEL STYLES**

Side Adjust, without Bushing	P140KV
Side Adjust, with Bushing	P140KV1
Top Adjust, without Bushing	P140KH
Top Adjust, with Bushing	P140KH1

**ELECTRICAL<sup>1</sup>**

Resistance Range, Ohms	500-1M
Standard Resistance Tolerance	± 20%
Residual Resistance	20 ohms max.
Input Voltage, maximum	50 Vac max.
Power rating, Watts	0.05w
Dielectric Strength	500Vac, 1 minute
Insulation Resistance, Minimum	100M ohms at 250Vdc
Sliding Noise	100mV max.
Gang Error ( Multi-ganged )	-40dB – 0dB, ±3dB
Actual Electrical Travel, Nominal	270°

**MECHANICAL**

Total Mechanical Travel	300°± 10°
Static Stop Strength	70 oz-in
Rotational Torque, Maximum	2.5 oz-in

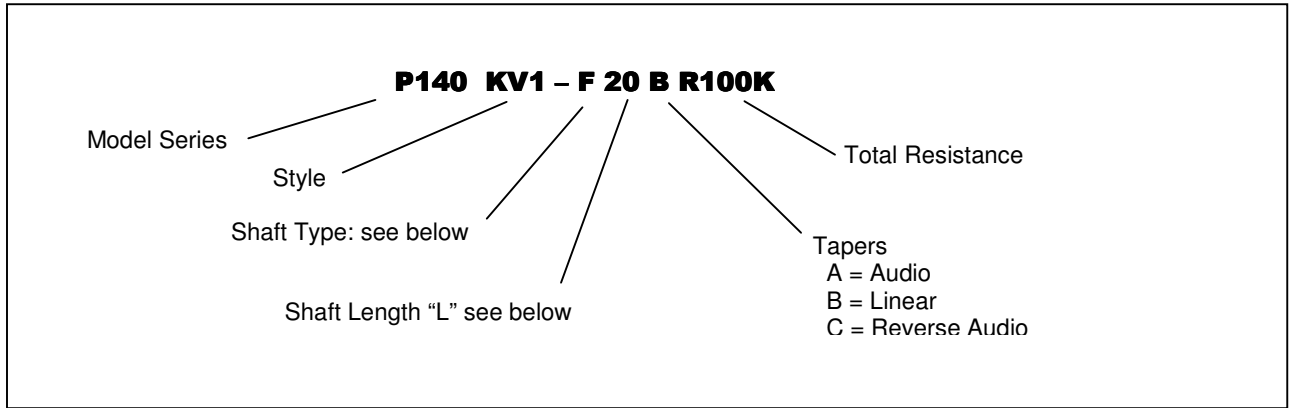
**ENVIRONMENTAL**

Operating Temperature Range	-20°C to +70°C
Rotational Life	30,000 cycles

<sup>1</sup> Specifications subject to change without notice.

# Model P140

## ORDERING INFORMATION<sup>2</sup>



### Shaft Types

	F-TYPE					Y-TYPE		
WITH BUSHING	L	15	20	25	30	L	15	20
	T	7	12	12	12	T	7	12
WITHOUT BUSHING	L	15	20	25	30	L	15	20
	T	4.5	7	12	12	T	5	7

18 TEETH KNURL

## STANDARD RESISTANCE VALUES, OHMS

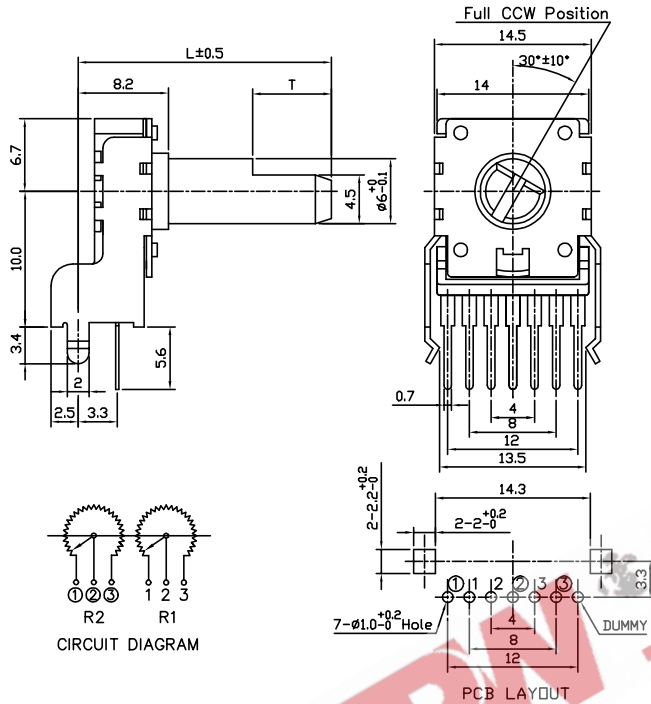
500    1K    2K    5K    10K    20K    50K    100K    200K    500K    1MEG

<sup>2</sup> Contact our customer service for custom designs and features.

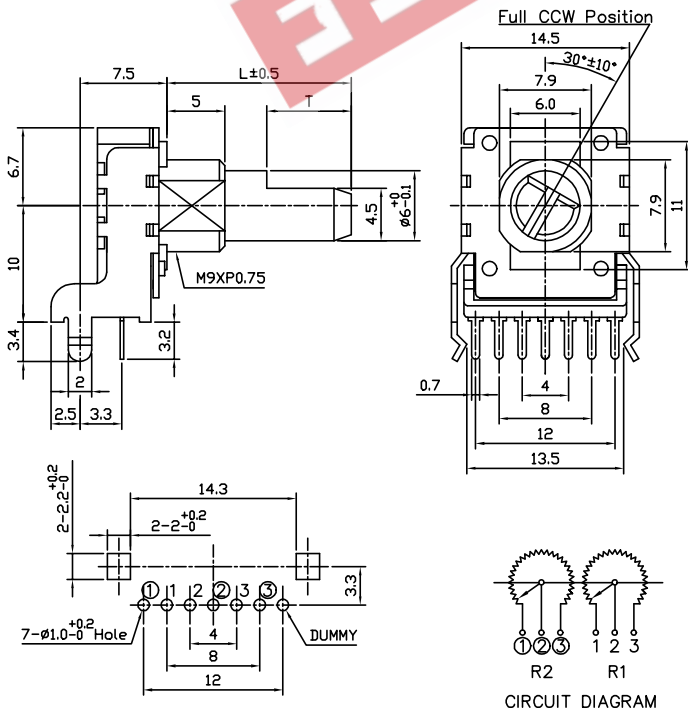
# Model P140

## OUTLINE DRAWING

Model P140KV (Side Adjust, without Bushing)

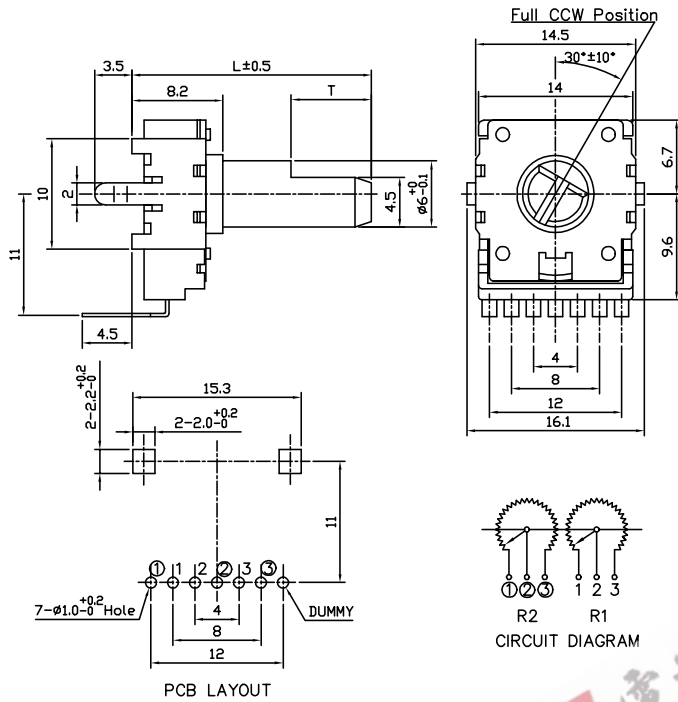


Model P140KV1 (Side Adjust, with Bushing)



# Model P140

## Model P140KH (Top Adjust, without Bushing)



## Model P140KH1 (Top Adjust, with Bushing)

