

Model P140
14mm Rotary Potentiometer
Dual Unit
Conductive Plastic Element
With / Without Bushing
Insulated Shaft
RoHS Compliant



MODEL STYLES

Side Adjust, without Bushing	P140KV
Side Adjust, with Bushing	P140KV1
Top Adjust, without Bushing	P140KH
Top Adjust, with Bushing	P140KH1

ELECTRICAL¹

Resistance Range, Ohms	500-1M
Standard Resistance Tolerance	± 20%
Residual Resistance	20 ohms max.
Input Voltage, maximum	50 Vac max.
Power rating, Watts	0.05w
Dielectric Strength	500Vac, 1 minute
Insulation Resistance, Minimum	100M ohms at 250Vdc
Sliding Noise	100mV max.
Gang Error (Multi-ganged)	-40dB – 0dB, ±3dB
Actual Electrical Travel, Nominal	270°

MECHANICAL

Total Mechanical Travel	300°± 10°
Static Stop Strength	70 oz-in
Rotational Torque, Maximum	2.5 oz-in

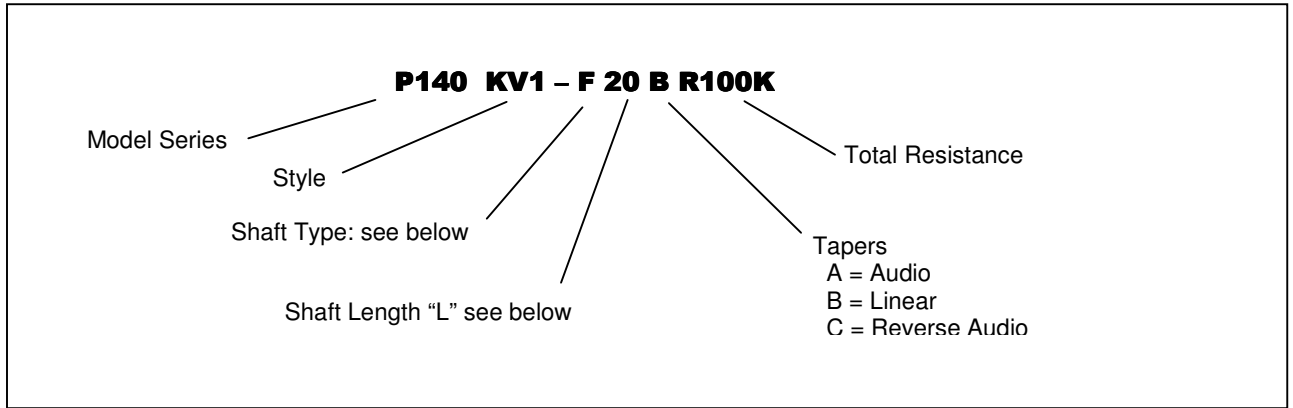
ENVIRONMENTAL

Operating Temperature Range	-20°C to +70°C
Rotational Life	30,000 cycles

¹ Specifications subject to change without notice.

Model P140

ORDERING INFORMATION²



Shaft Types

	F-TYPE					Y-TYPE		
WITH BUSHING	L	15	20	25	30	L	15	20
	T	7	12	12	12	T	7	12
WITHOUT BUSHING	L	15	20	25	30	L	15	20
	T	4.5	7	12	12	T	5	7

STANDARD RESISTANCE VALUES, OHMS

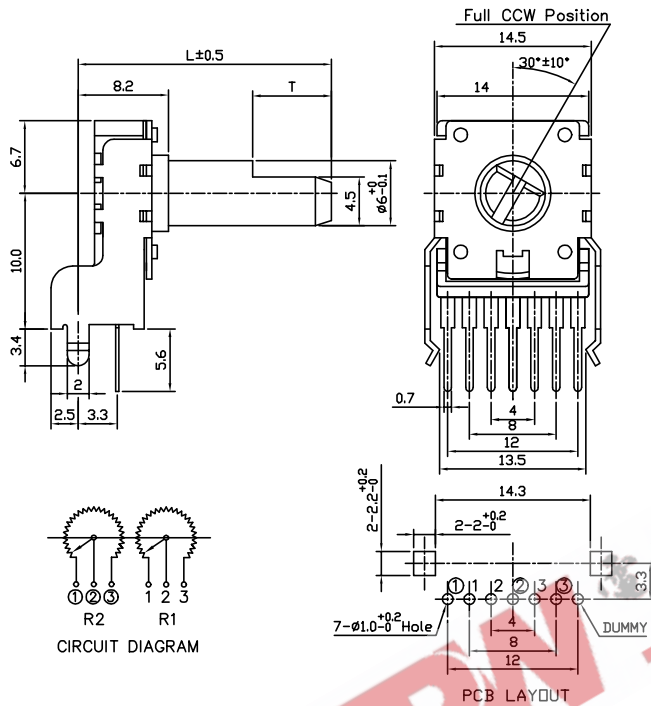
500 1K 2K 5K 10K 20K 50K 100K 200K 500K 1MEG

² Contact our customer service for custom designs and features.

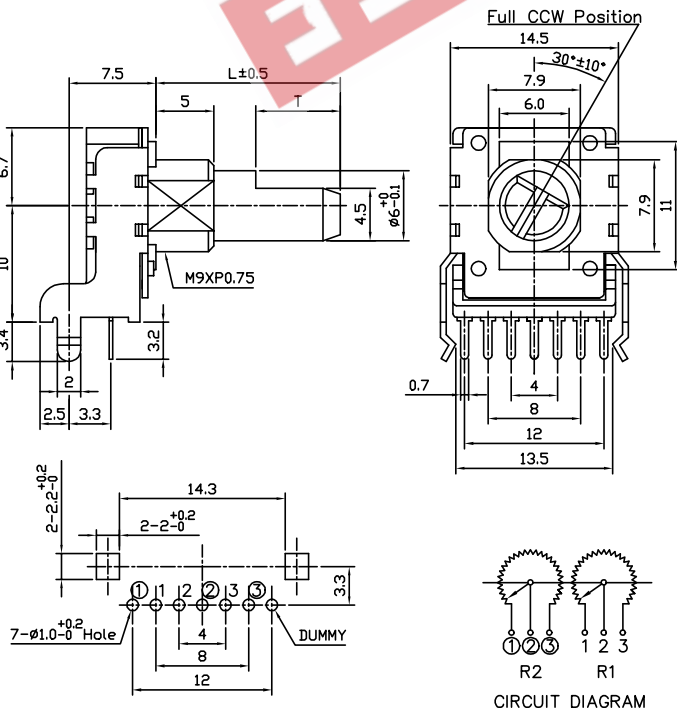
Model P140

OUTLINE DRAWING

Model P140KV (Side Adjust, without Bushing)



Model P140KV1 (Side Adjust, with Bushing)



Model P140

Model P140KH (Top Adjust, without Bushing)



Model P140KH1 (Top Adjust, with Bushing)

