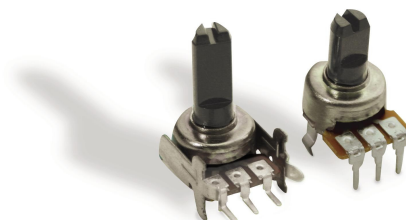


**Model P120**  
**12mm Rotary Potentiometer**  
**Single/Dual Unit**  
**Conductive Plastic Element**  
**100,000 Cycle Life**  
**Insulated shaft**  
**RoHS Compliant**



**MODEL STYLES**

Side Adjust, PCB pins, Single unit	P120K
Top Adjust, PCB pins, Single unit	P120PK
Top Adjust, PCB pins, Dual unit	P120KGP
Side Adjust, PCB pins, Dual unit	P120KGE

**ELECTRICAL<sup>1</sup>**

Resistance Range, Ohms	1K- 1M
Standard Resistance Tolerance	± 20%
Residual Resistance	20 ohms max.
Input Voltage, maximum	50 Vac max.
Power rating, Watts	0.05w
Dielectric Strength	300Vac, 1 minute
Insulation Resistance, Minimum	100M ohms at 250Vdc
Sliding Noise	100mV max.
Gang Error ( Multi-ganged )	-40dB – 0dB, ±3dB
Actual Electrical Travel, Nominal	270°

**MECHANICAL**

Total Mechanical Travel	300°± 10°
Static Stop Strength	50 oz-in
Rotational Torque, Maximum	2.5 oz-in

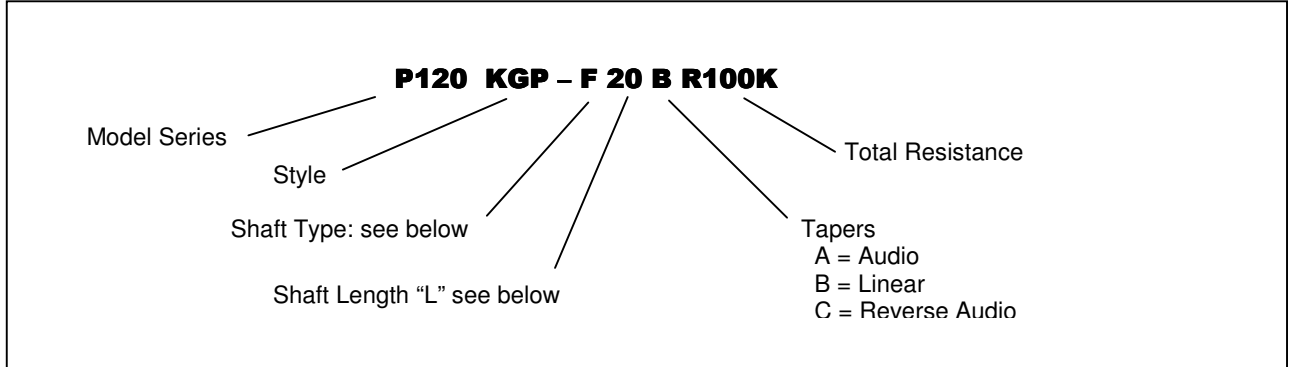
**ENVIRONMENTAL**

Operating Temperature Range	-20°C to +70°C
Rotational Life	100,000 cycles

<sup>1</sup> Specifications subject to change without notice.

# Model P120

## ORDERING INFORMATION<sup>2</sup>



## Shaft Types

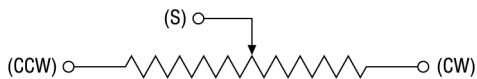
	F-TYPE								Y-TYPE							T-TYPE					
TOP ADJUST	L	15	17	20	25	30	35	40	L	15	20	25	30	35	40	L	15	20	25	30	35
	T	5	7	7	12	12	12	12	T	5	8	12	12	12	12	T	5	7	7	12	12
SIDE ADJUST	L	10	15	20	25	30	L	10	15	20	25	30	L	10	15	20	25	30			
	T	5	8	12	12	12	T	5	8	12	12	12	T	5	7	7	12	12			

## STANDARD RESISTANCE VALUES, OHMS

1K    2K    5K    10K    20K    50K    100K    200K    500K    1MEG

## CIRCUIT DIAGRAM

Unless otherwise specified

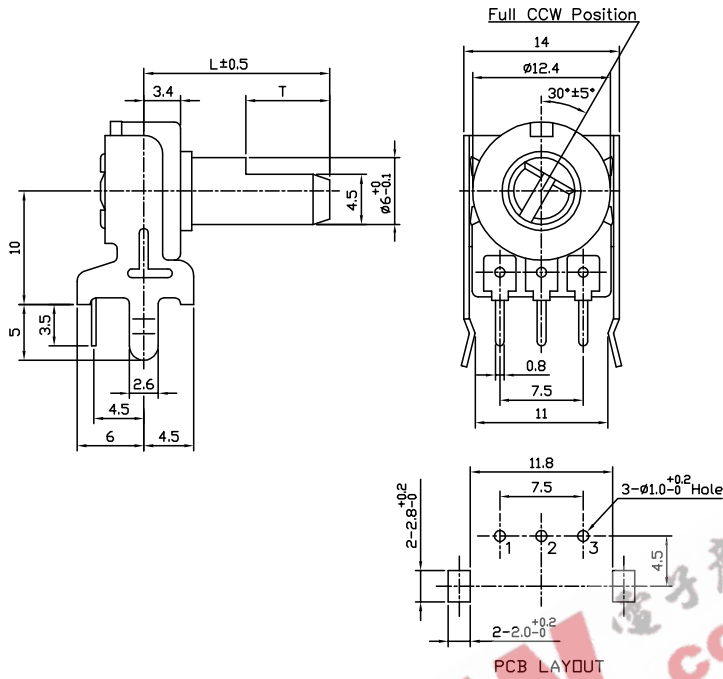


<sup>2</sup> Contact our customer service for custom designs and features.

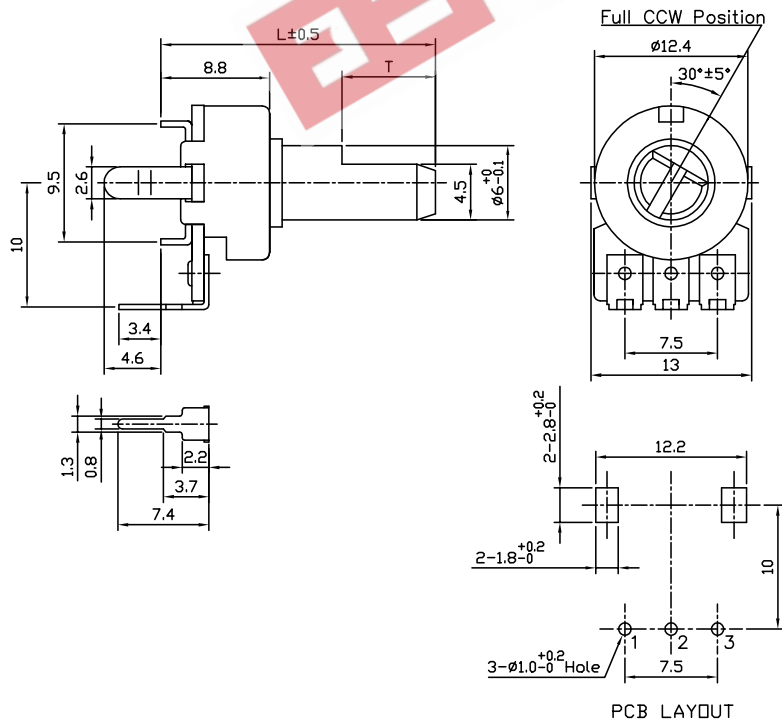
# Model P120

## OUTLINE DRAWING

Model P120K (Side Adjust, PCB pins, Single unit)

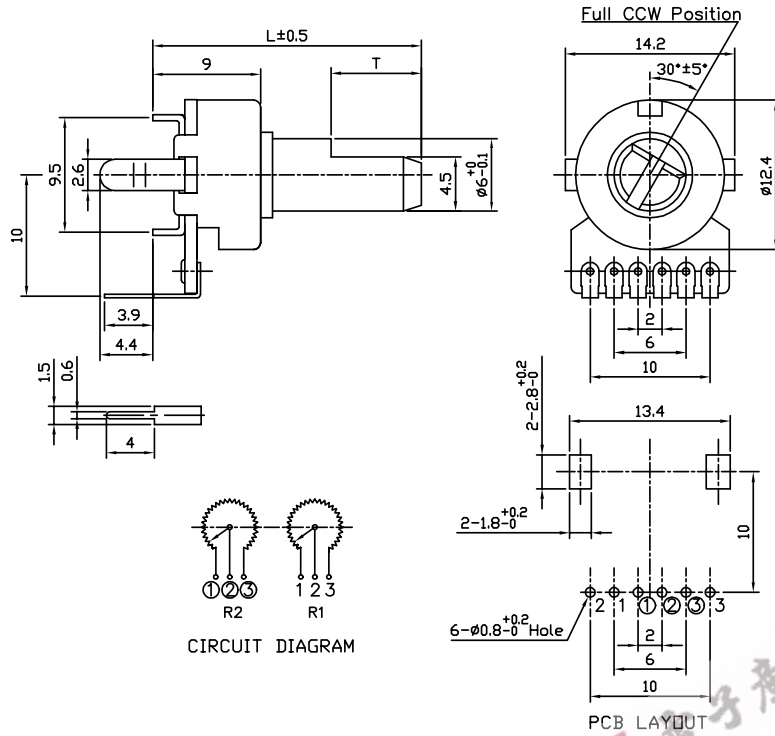


Model P120PK (Top Adjust, PCB pins, Single unit)

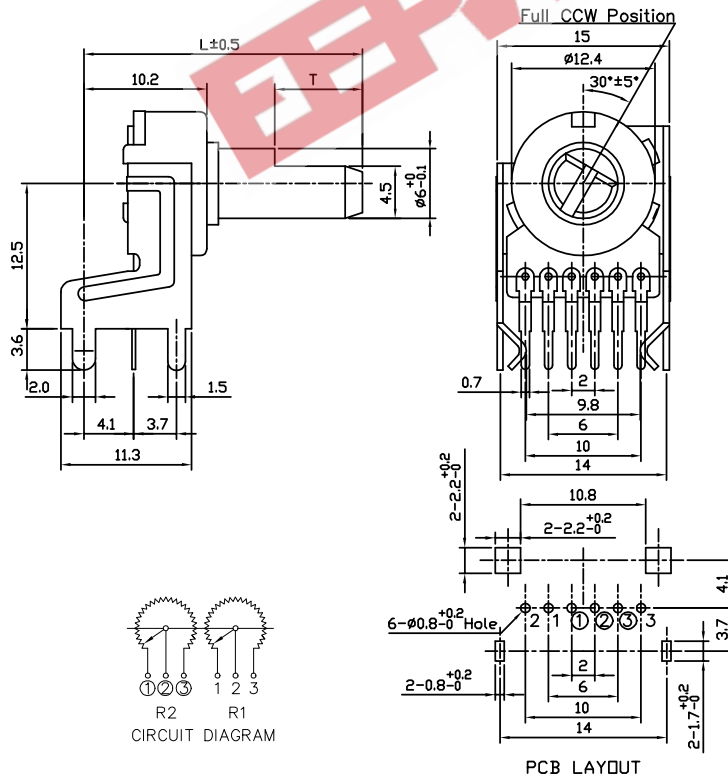


# Model P120

Model P120KGP (Top Adjust, PCB pins, Dual unit)



Model P120KGE (Side Adjust, PCB pins, Dual unit)



BI Technologies Corporation

4200 Bonita Place, Fullerton, CA 92835 USA

Phone: 714 447 2345 Website: [www.bitechnologies.com](http://www.bitechnologies.com)

February 16, 2007

page 4 of 4

 **electronics**  
BI technologies

Unless otherwise Specified