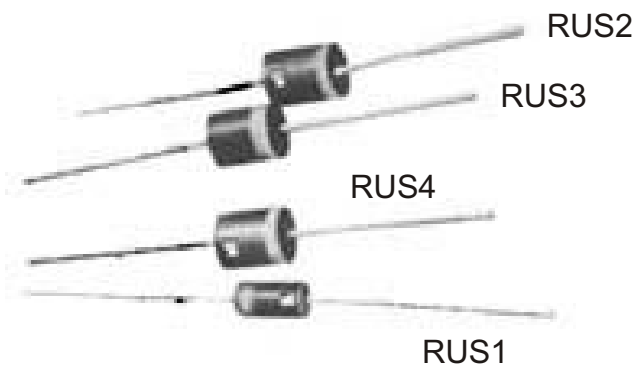




RUS

50 ULTRA-FAST RECOVERY AXIAL LEAD RECTIFIER DIODES

PRV to 600 V
 50ns recovery
 Small size
 High temperature stability
 High surge capability
 Exceptionally low leakage
 Avalanche characteristics



PRV	200V	400V	500V	600V
RUS1	RUS120	RUS140	RUS150	RUS160
RUS2	RUS220	RUS240	RUS250	RUS260
RUS3	RUS320	RUS340	RUS350	RUS360
RUS4	RUS420	RUS440	RUS450	RUS460

ELECTRICAL CHARACTERISTICS(at T_A=25 °C Unless Otherwise Specified)

	RUS1	RUS2	RUS3	RUS4	UNITS
Average Rectified Forward Current, I _o @80 °C lead temperature, L=3/8" (Fig.1)	1.5	3.5	5	5	Amps
Max. DC Reverse Current @ PRV and 25 °C, I _R	1	5	5	5	μA
Max. DC Reverse Current @ PRV and 100 °C, I _R	50	100	100	100	μA
Max. Peak Surge Current, I _{FSM} (8.3μsec) (Fig2)	50	100	240	320	Amps(pk)
Max. Forward Voltage Drop @ 25°C, V _F with Forward Current pulse I _F (300 μsec width)	1.3 1	1.3 3	1.3 4	1.3 5	Volts Amps
Reverse Recovery Time, T _{rr} (Fig.4)	50	50	50	50	nsec.
Ambient Operating Temperature Range, T _A	-55 to +150 °C				
Storage Temperature Range, T _{STG}	-55 to +150 °C				

EDI reserves the right to change these specifications at any time without notice.

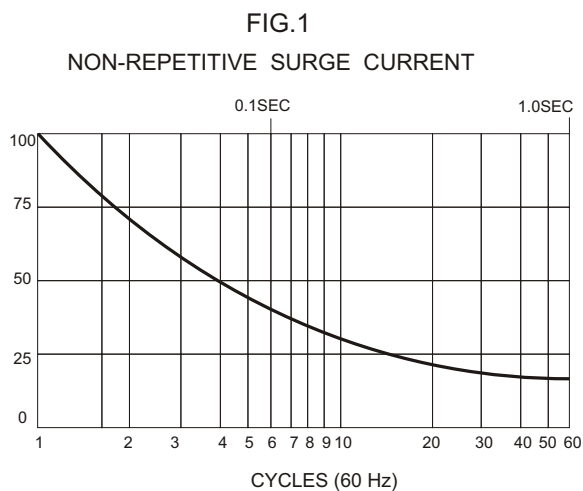
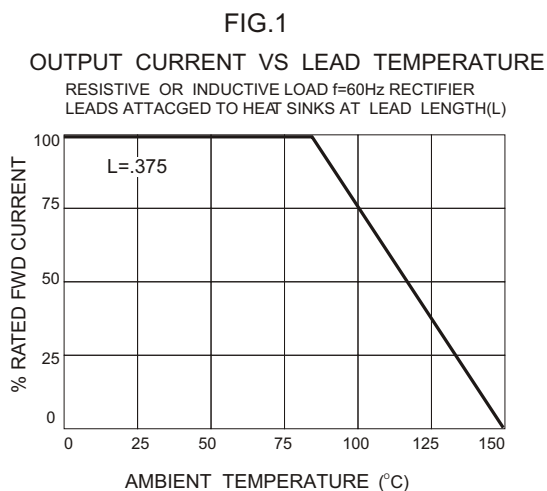
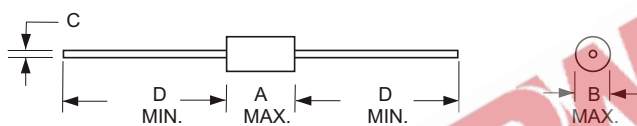
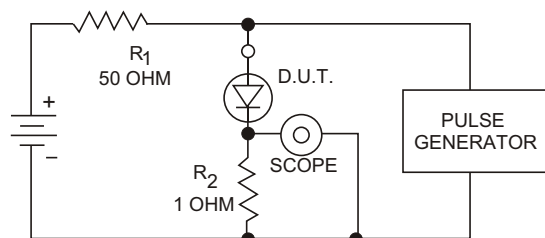
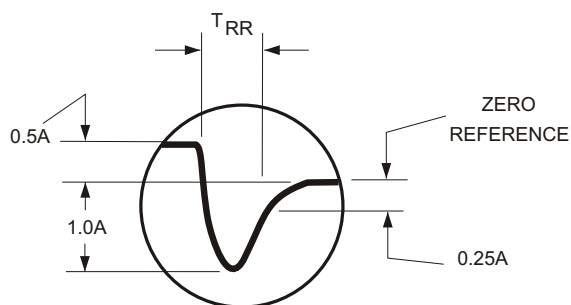


FIG.3
MECHANICAL



	DIMENSIONS(inches)			
	A	B	C	D
RUS1	.380	.160	$\frac{0.033}{0.031}$	1.00
RUS2	.380	.260	$\frac{0.052}{0.048}$	1.00
RUS3	.380	.260	$\frac{0.052}{0.048}$	1.00
RUS4	.380	.310	$\frac{0.052}{0.048}$	1.00

TYPICAL REVERSE RECOVERY WAVEFORM



R_1, R_2 NON-INDUCTIVE RESISTORS
 PULSE GENERATOR-HEWLETT PACKARD 214A OR EQUIV.
 IKC REP.RATE, 10μ SEC. PULSE WIDTH
 ADJUST PULSE AMPLITUDE FOR PEAK I_R