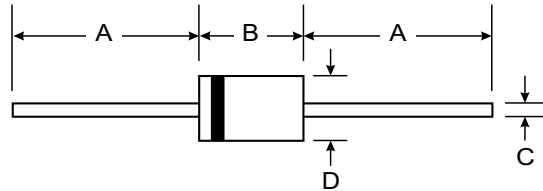


## Features

- Low Forward Voltage Drop
- Guard Ring Construction for Transient Protection
- Low Reverse Recovery Time
- Low Reverse Capacitance



## Mechanical Data

- Case: DO-35, Glass
- Leads: Solderable per MIL-STD-202, Method 208
- Marking: Type Number
- Polarity: Cathode Band
- Weight: 0.13 grams (approx.)

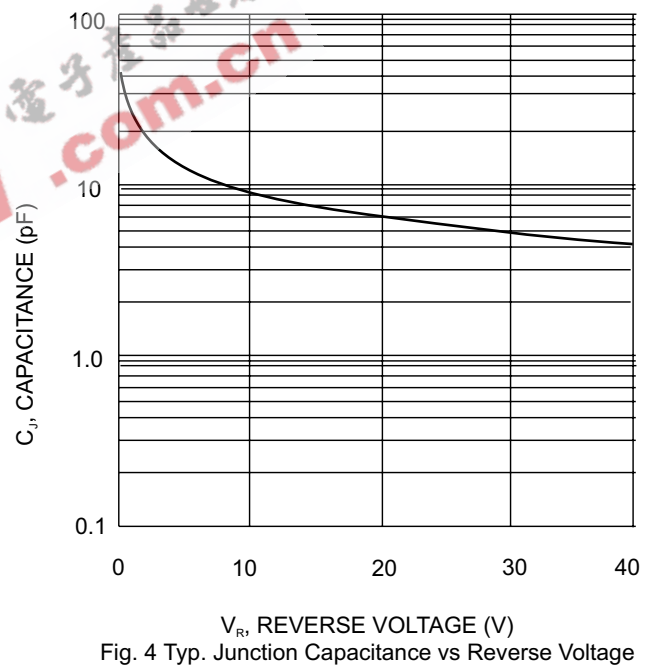
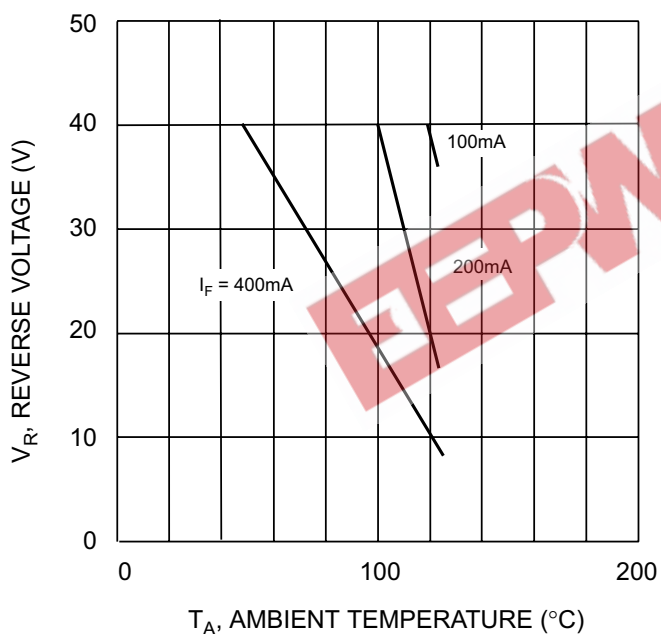
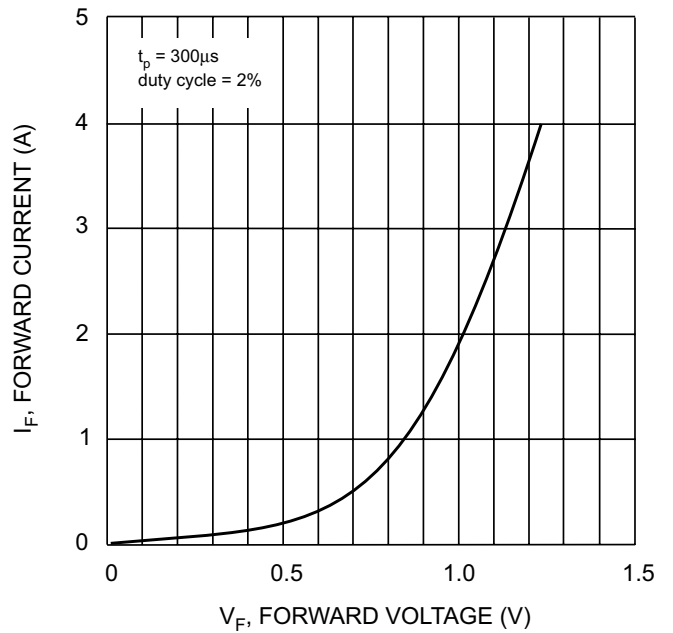
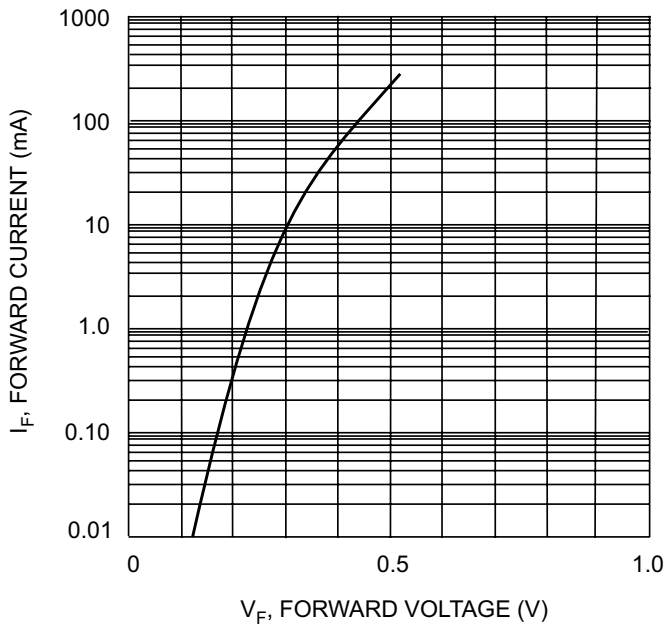
DO-35		
Dim	Min	Max
A	25.40	—
B	—	4.00
C	—	0.60
D	—	2.00
All Dimensions in mm		

## Maximum Ratings @ $T_A = 25^\circ\text{C}$ unless otherwise specified

Characteristic	Symbol	SD103A	SD103B	SD103C	Unit
Peak Repetitive Reverse Voltage	$V_{RRM}$	40	30	20	V
Working Peak Reverse Voltage	$V_{RWM}$				
DC Blocking Voltage	$V_R$				
RMS Reverse Voltage	$V_{R(RMS)}$	28	21	14	V
Forward Continuous Current	$I_{FM}$	350			mA
Repetitive Peak Forward Current @ $t \leq 1.0\text{s}$	$I_{FRM}$	1.0			A
Non-Repetitive Peak Forward Surge Current 8.3 ms Half Sine Wave	$I_{FSM}$	15			A
Power Dissipation	$P_d$	400			mW
Thermal Resistance, Junction to Ambient Air	$R_{\theta JA}$	300			K/W
Operating Junction Temperature	$T_j$	125			$^\circ\text{C}$
Storage Temperature Range	$T_{STG}$	-55 to +150			$^\circ\text{C}$

## Electrical Characteristics @ $T_A = 25^\circ\text{C}$ unless otherwise specified

Characteristic	Symbol	Min	Typ	Max	Unit	Test Condition
Reverse Breakdown Voltage	SD103A SD103B SD103C $V_{(BR)R}$	40 30 20	—	—	V	$I_{RS} = 100\mu\text{A}$ (pulsed)
Maximum Forward Voltage Drop	$V_{FM}$	—	—	0.37 0.60	V	$I_F = 20\text{mA}$ $I_F = 200\text{mA}$
Maximum Peak Reverse Current	SD103A SD103B SD103C $I_{RM}$	—	—	5.0	$\mu\text{A}$	$V_R = 30\text{V}$ $V_R = 20\text{V}$ $V_R = 10\text{V}$
Junction Capacitance	$C_j$	—	50	—	pF	$V_R = 0\text{V}$ , $f = 1.0\text{MHz}$
Reverse Recovery Time	$t_{rr}$	—	10	—	ns	$I_F = I_R = 50\text{mA}$ to $200\text{mA}$ , $I_{rr} = 0.1 \times I_R$ , $R_L = 100\Omega$

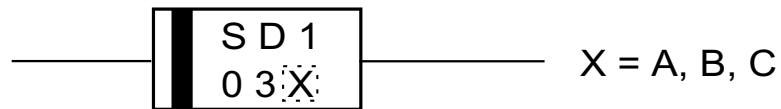


## Ordering Information (Note 1)

Device	Packaging	Shipping
SD103A-A	DO-35	10,000 / Ammo Pak
SD103A-T	DO-35	10,000 / Tape & Reel
SD103B-A	DO-35	10,000 / Ammo Pak
SD103B-T	DO-35	10,000 / Tape & Reel
SD103C-A	DO-35	10,000 / Ammo Pak
SD103C-T	DO-35	10,000 / Tape & Reel

Notes: 1. For Packaging Details, go to our website at <http://www.diodes.com/datasheets/ap02007.pdf>.

## Marking Information



EEPW 电子产品世界  
.com.cn