

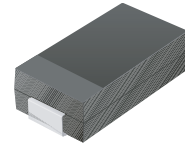
SMD Schottky Barrier Rectifier

COMCHIP
SMD DIODE SPECIALIST

SS12-G THRU SS110-G

Reverse Voltage: 20~100 Volts

Forward Current: 1.0 Amp

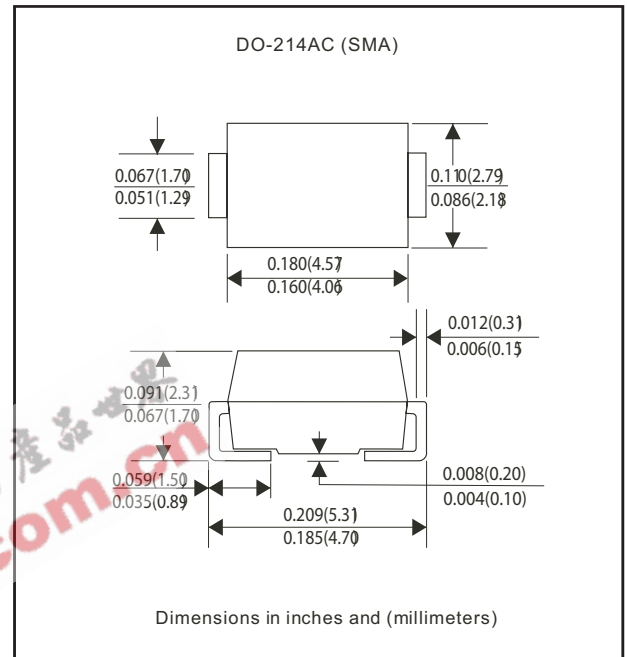


Features

- Ideal for surface mount application
- Easy pick and place
- Plastic package has Underwriters Lab. Flammability classification 94V-0
- Built-in strain relief
- Low forward voltage drop

Mechanical Data

- Case: JEDEC DO-214AC molded plastic
- Terminal: Solderable per MIL-STD-750 method 2026 guaranteed
- Polarity: Color band denotes cathode end
- Mounting position: Any
- Weight: 0.064 gram



Maximum Rating and Electrical Characteristics

Parameter	Symbol	SS12-G	SS14-G	SS16-G	SS18-G	SS110-G	Unit
Max. Repetitive Peak Reverse Voltage	V _{RRM}	20	40	60	80	100	V
Max. DC Blocking Voltage	V _{DC}	20	40	60	80	100	V
Max. RMS Voltage	V _{RMS}	14	28	42	56	70	V
Peak Surge Forward Current 8.3ms single half-sine-wave superimposed on rated load (JEDEC method)	I _{FSM}	35					A
Max. Average Forward Current	I _o	1.0					A
Max. Instantaneous Forward Current at 1.0 A	V _F	0.50		0.70		0.85	V
Max. DC Reverse Current at Rated DC Blocking Voltage T _a =25°C	I _R	0.5					mA
T _a =100°C		10		5			
Max. Thermal Resistance (Note 1)	R _{θJA}	88					°C/W
	R _{θJL}	20					
Operating Junction Temperature	T _j	-50 to +125					°C
Storage Temperature	T _{STG}	-65 to +150					°C

Note 1: Thermal resistance from junction to ambient and junction to lead P.C.B. Mounted on 0.2 x 0.2 copper pad areas

“-G” suffix designates RoHS compliant Version

SMD Schottky Barrier Rectifier

COMCHIP
SMD DIODE SPECIALIST

Rating and Characteristic Curves (SS12-G Thru SS110-G)

Fig. 1 - Reverse Characteristics

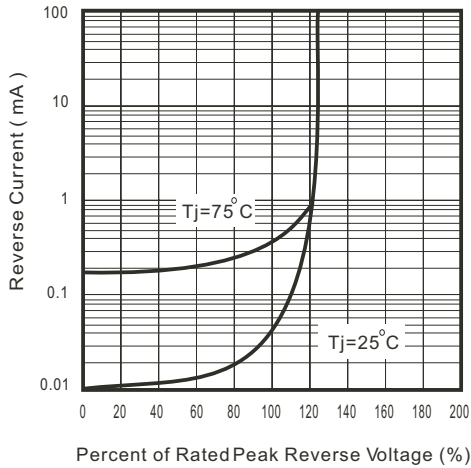


Fig. 2 - Forward Characteristics

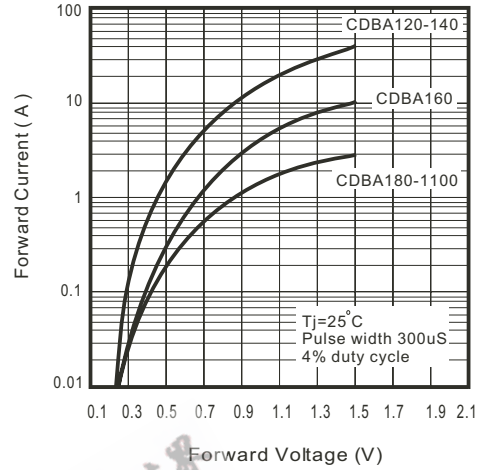


Fig. 3 - Junction Capacitance

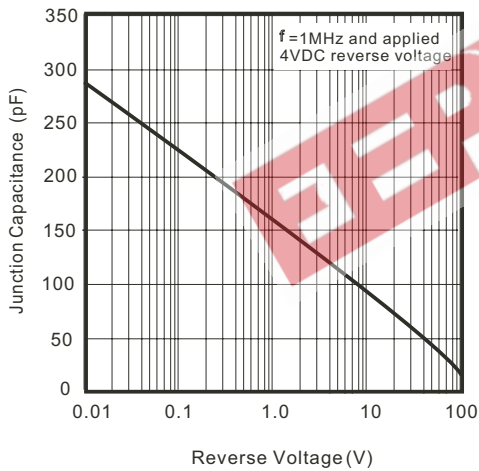


Fig. 4 - Current Derating Curve

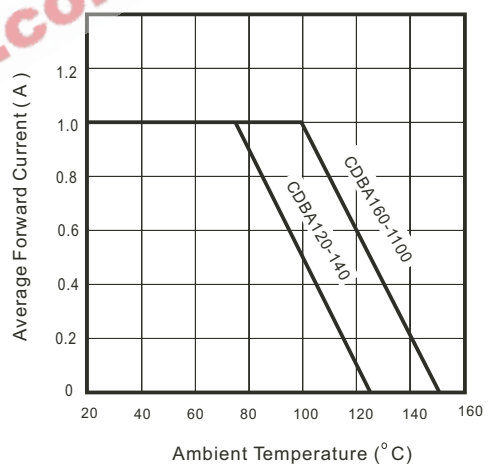


Fig. 5 - Non repetitive forward surge current

