

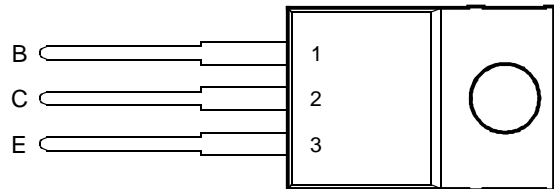
TIP130, TIP131, TIP132 NPN SILICON POWER DARLINGTONS

Copyright © 1997, Power Innovations Limited, UK

JUNE 1973 - REVISED MARCH 1997

- Designed for Complementary Use with TIP135, TIP136 and TIP137
- 70 W at 25°C Case Temperature
- 8 A Continuous Collector Current
- Minimum h_{FE} of 1000 at 4 V, 4 A

TO-220 PACKAGE
(TOP VIEW)



Pin 2 is in electrical contact with the mounting base.

MDTRACA

absolute maximum ratings at 25°C case temperature (unless otherwise noted)

RATING		SYMBOL	VALUE	UNIT
Collector-base voltage ($I_E = 0$)	TIP130	V_{CBO}	60	V
	TIP131		80	
	TIP132		100	
Collector-emitter voltage ($I_B = 0$)	TIP130	V_{CEO}	60	V
	TIP131		80	
	TIP132		100	
Emitter-base voltage		V_{EBO}	5	V
Continuous collector current		I_C	8	A
Peak collector current (see Note 1)		I_{CM}	12	A
Continuous base current		I_B	0.3	A
Continuous device dissipation at (or below) 25°C case temperature (see Note 2)		P_{tot}	70	W
Continuous device dissipation at (or below) 25°C free air temperature (see Note 3)		P_{tot}	2	W
Unclamped inductive load energy (see Note 4)		$\frac{1}{2}LI_C^2$	75	mJ
Operating junction temperature range		T_j	-65 to +150	°C
Storage temperature range		T_{stg}	-65 to +150	°C
Lead temperature 3.2 mm from case for 10 seconds		T_L	260	°C

- NOTES: 1. This value applies for $t_p \leq 0.3$ ms, duty cycle $\leq 10\%$.
 2. Derate linearly to 150°C case temperature at the rate of 0.56 W/°C.
 3. Derate linearly to 150°C free air temperature at the rate of 16 mW/°C.
 4. This rating is based on the capability of the transistor to operate safely in a circuit of: $L = 20$ mH, $I_{B(on)} = 5$ mA, $R_{BE} = 100 \Omega$, $V_{BE(off)} = 0$, $R_S = 0.1 \Omega$, $V_{CC} = 20$ V.

PRODUCT INFORMATION

Information is current as of publication date. Products conform to specifications in accordance with the terms of Power Innovations standard warranty. Production processing does not necessarily include testing of all parameters.

TIP130, TIP131, TIP132

NPN SILICON POWER DARLINGTONS

JUNE 1973 - REVISED MARCH 1997

electrical characteristics at 25°C case temperature

PARAMETER		TEST CONDITIONS			MIN	TYP	MAX	UNIT
$V_{(BR)CEO}$	Collector-emitter breakdown voltage	$I_C = 30 \text{ mA}$	$I_B = 0$	(see Note 5)	TIP130 60 TIP131 80 TIP132 100			V
I_{CEO}	Collector-emitter cut-off current	$V_{CE} = 30 \text{ V}$ $V_{CE} = 40 \text{ V}$ $V_{CE} = 50 \text{ V}$	$I_B = 0$ $I_B = 0$ $I_B = 0$		TIP130 TIP131 TIP132		0.5 0.5 0.5	mA
I_{CBO}	Collector cut-off current	$V_{CB} = 60 \text{ V}$ $V_{CB} = 80 \text{ V}$ $V_{CB} = 100 \text{ V}$ $V_{CB} = 60 \text{ V}$ $V_{CB} = 80 \text{ V}$ $V_{CB} = 100 \text{ V}$	$I_E = 0$ $I_E = 0$ $I_E = 0$ $I_E = 0$ $I_E = 0$ $I_E = 0$	$T_C = 100^\circ\text{C}$ $T_C = 100^\circ\text{C}$ $T_C = 100^\circ\text{C}$	TIP130 TIP131 TIP132 TIP130 TIP131 TIP132		0.2 0.2 0.2 1 1 1	mA
I_{EBO}	Emitter cut-off current	$V_{EB} = 5 \text{ V}$	$I_C = 0$				5	mA
h_{FE}	Forward current transfer ratio	$V_{CE} = 4 \text{ V}$ $V_{CE} = 4 \text{ V}$	$I_C = 1 \text{ A}$ $I_C = 4 \text{ A}$	(see Notes 5 and 6)	500 1000		15000	
$V_{CE(sat)}$	Collector-emitter saturation voltage	$I_B = 16 \text{ mA}$ $I_B = 30 \text{ mA}$	$I_C = 4 \text{ A}$ $I_C = 6 \text{ A}$	(see Notes 5 and 6)			2 3	V
V_{BE}	Base-emitter voltage	$V_{CE} = 4 \text{ V}$	$I_C = 4 \text{ A}$	(see Notes 5 and 6)			2.5	V
C_{obo}	Output capacitance	$V_{CB} = 10 \text{ V}$	$I_E = 0$				200	pF
V_{EC}	Parallel diode forward voltage	$I_E = 8 \text{ A}$	$I_B = 0$	(see Notes 5 and 6)			3.5	V

NOTES: 5. These parameters must be measured using pulse techniques, $t_p = 300 \mu\text{s}$, duty cycle $\leq 2\%$.

6. These parameters must be measured using voltage-sensing contacts, separate from the current carrying contacts.

thermal characteristics

PARAMETER		MIN	TYP	MAX	UNIT
$R_{\theta JC}$	Junction to case thermal resistance			1.78	$^\circ\text{C/W}$
$R_{\theta JA}$	Junction to free air thermal resistance			62.5	$^\circ\text{C/W}$

TYPICAL CHARACTERISTICS

TYPICAL DC CURRENT GAIN
 VS
 COLLECTOR CURRENT

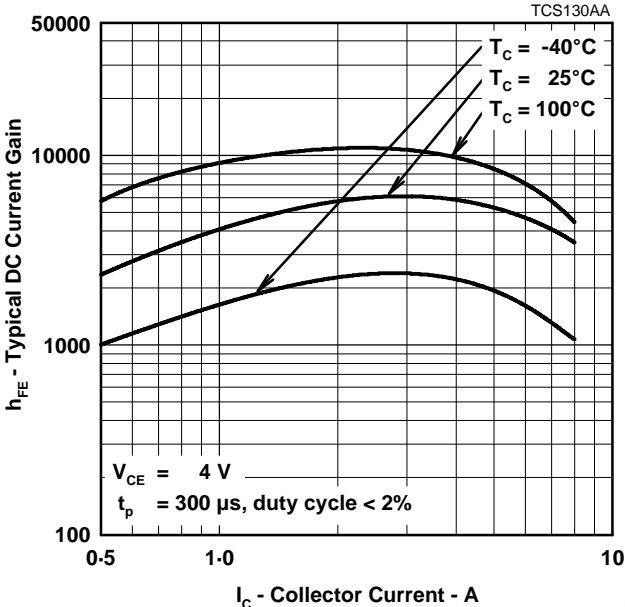


Figure 1.

COLLECTOR-EMITTER SATURATION VOLTAGE
 VS
 COLLECTOR CURRENT

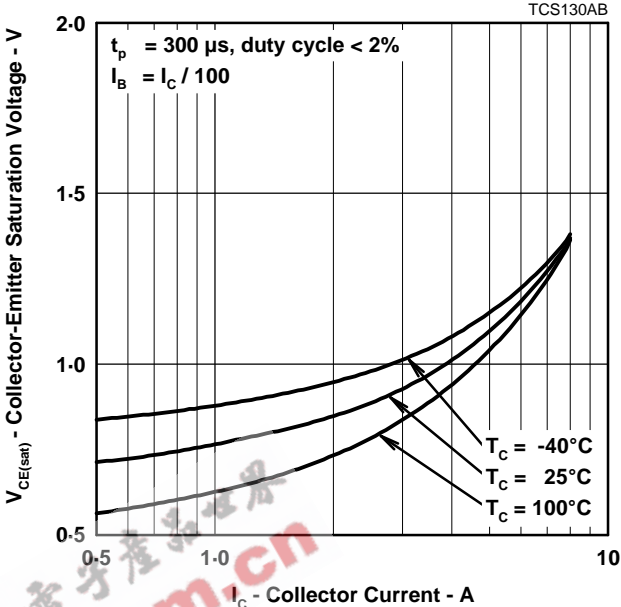


Figure 2.

BASE-EMITTER SATURATION VOLTAGE
 VS
 COLLECTOR CURRENT

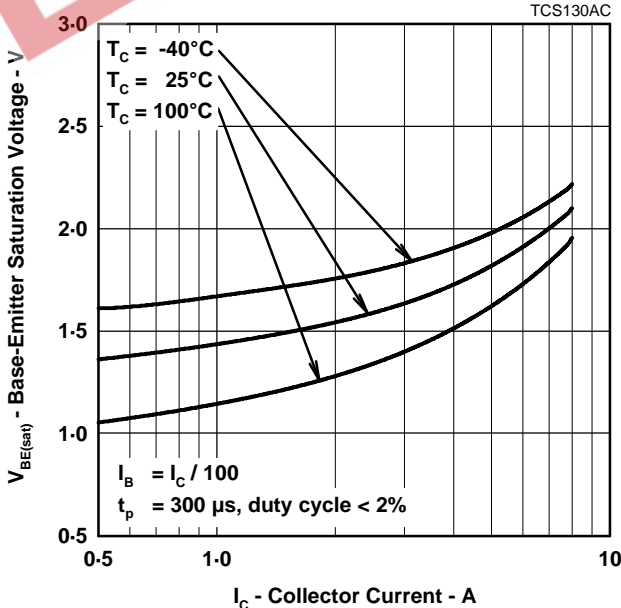


Figure 3.

TIP130, TIP131, TIP132 NPN SILICON POWER DARLINGTONS

JUNE 1973 - REVISED MARCH 1997

MAXIMUM SAFE OPERATING REGIONS

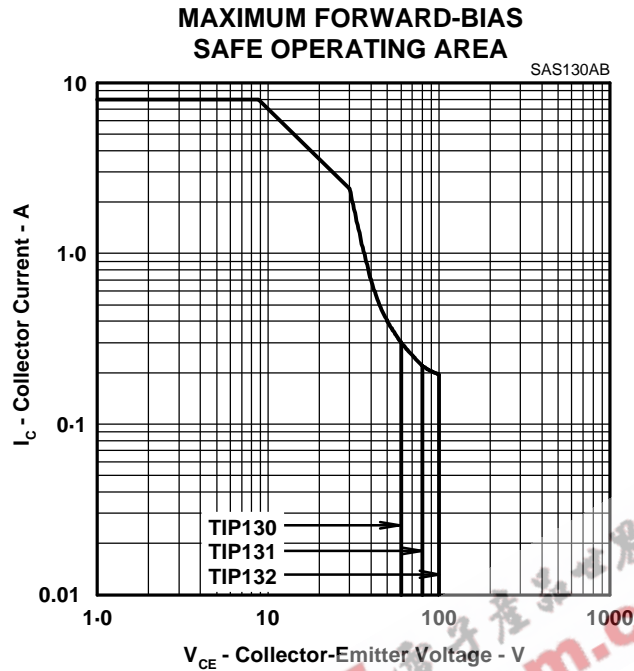


Figure 4.

THERMAL INFORMATION

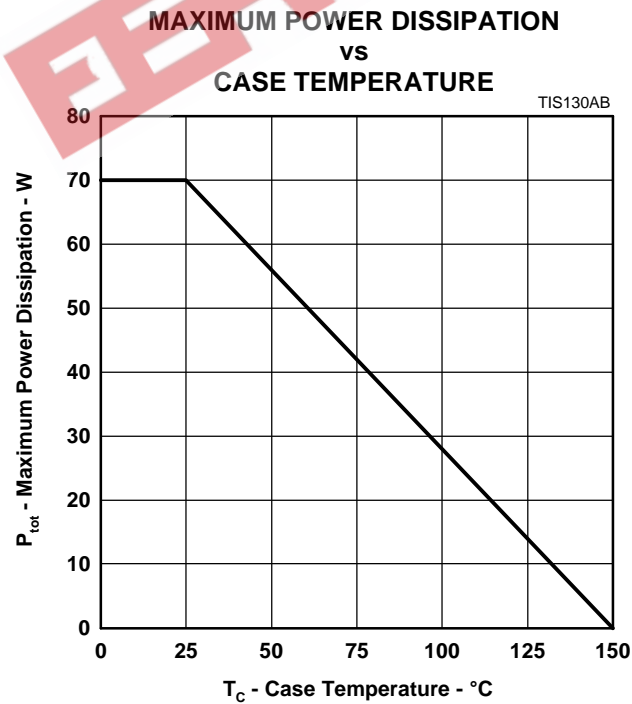


Figure 5.

PRODUCT INFORMATION

TIP130, TIP131, TIP132 NPN SILICON POWER DARLINGTONS

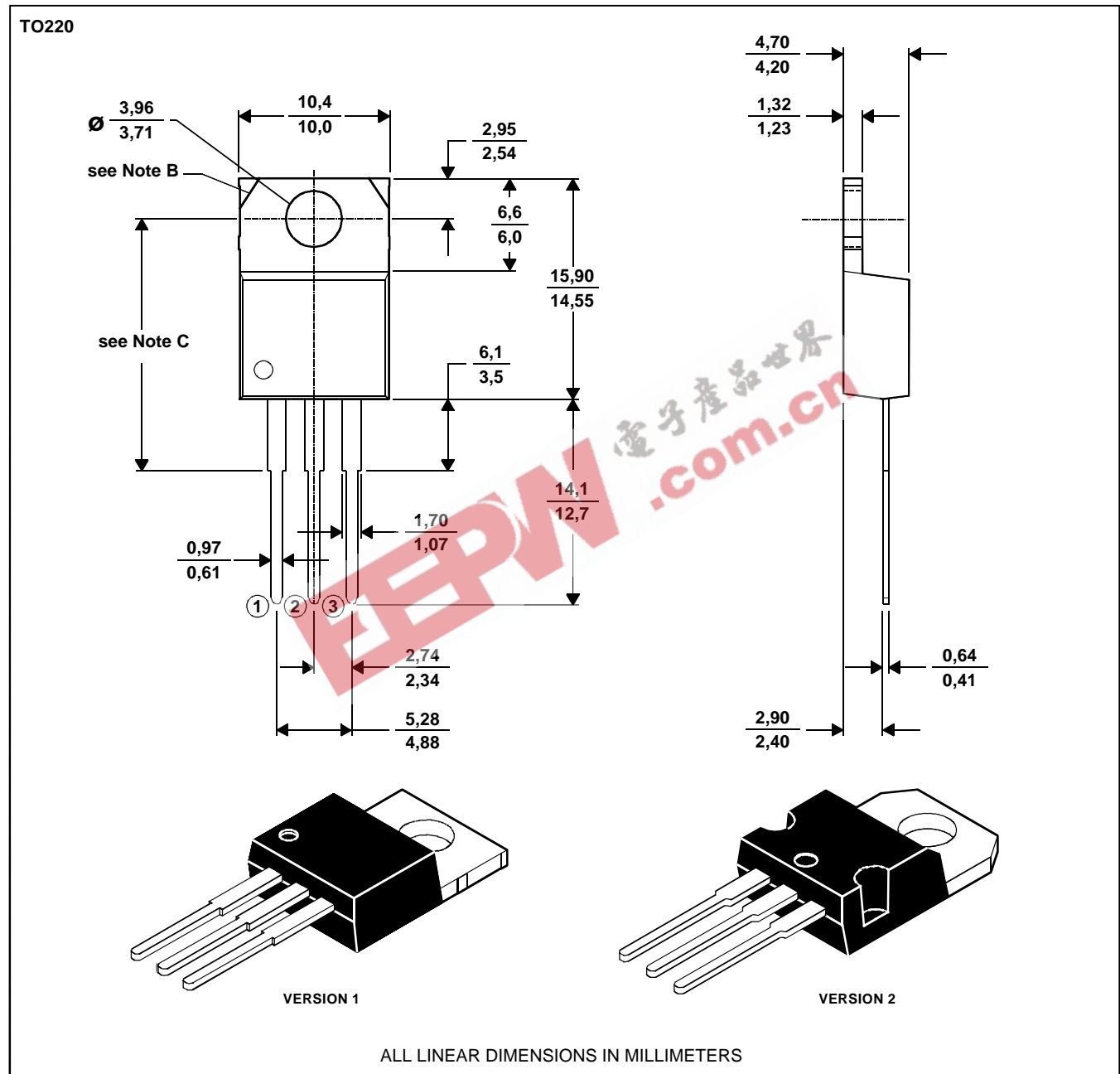
JUNE 1973 - REVISED MARCH 1997

MECHANICAL DATA

TO-220

3-pin plastic flange-mount package

This single-in-line package consists of a circuit mounted on a lead frame and encapsulated within a plastic compound. The compound will withstand soldering temperature with no deformation, and circuit performance characteristics will remain stable when operated in high humidity conditions. Leads require no additional cleaning or processing when used in soldered assembly.



- NOTES: A. The centre pin is in electrical contact with the mounting tab.
 B. Mounting tab corner profile according to package version.
 C. Typical fixing hole centre stand off height according to package version.
 Version 1, 18.0 mm. Version 2, 17.6 mm.

MDXXBE

PRODUCT INFORMATION

TIP130, TIP131, TIP132 NPN SILICON POWER DARLINGTONS

JUNE 1973 - REVISED MARCH 1997

IMPORTANT NOTICE

Power Innovations Limited (PI) reserves the right to make changes to its products or to discontinue any semiconductor product or service without notice, and advises its customers to verify, before placing orders, that the information being relied on is current.

PI warrants performance of its semiconductor products to the specifications applicable at the time of sale in accordance with PI's standard warranty. Testing and other quality control techniques are utilized to the extent PI deems necessary to support this warranty. Specific testing of all parameters of each device is not necessarily performed, except as mandated by government requirements.

PI accepts no liability for applications assistance, customer product design, software performance, or infringement of patents or services described herein. Nor is any license, either express or implied, granted under any patent right, copyright, design right, or other intellectual property right of PI covering or relating to any combination, machine, or process in which such semiconductor products or services might be or are used.

PI SEMICONDUCTOR PRODUCTS ARE NOT DESIGNED, INTENDED, AUTHORIZED, OR WARRANTED TO BE SUITABLE FOR USE IN LIFE-SUPPORT APPLICATIONS, DEVICES OR SYSTEMS.

Copyright © 1997, Power Innovations Limited

PRODUCT INFORMATION