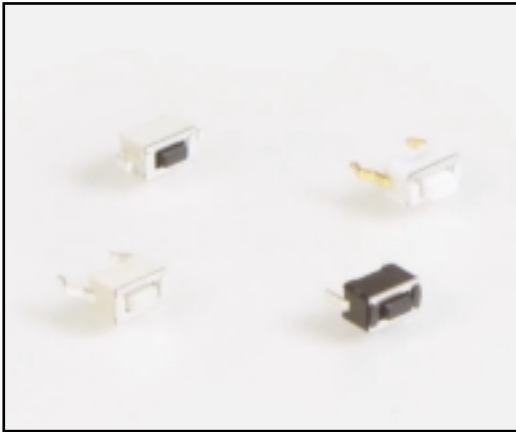


TACT SWITCHES



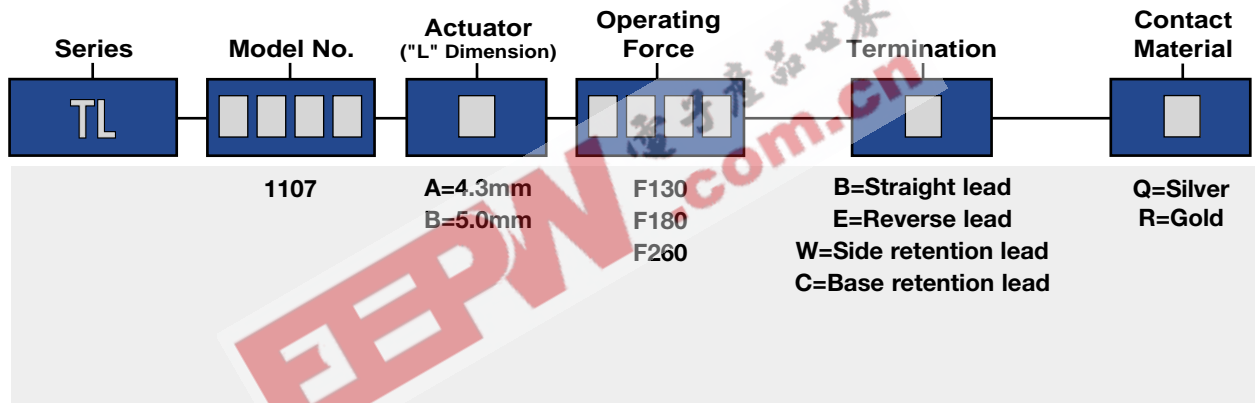
**SPECIFICATIONS**

Rating: 50mA@50 VDC  
 Electrical Life: 100,000 cycles  
 Contact Resistance: 100mΩ max., typical @ 2-4 VDC  
 100mA for both silver and gold plated contacts  
 Insulation Resistance: 1,000Ω min.  
 Dielectric Strength: >1,000 V rms at sea level  
 Operating Force: 130 ± 50 gf, 180± 50 gf, 260 ± 50 gf

**MATERIALS**

Housing: 4/6 Nylon  
 Actuator: 4/6 Nylon  
 Cover: Stainless steel  
 Contacts: Silver or Gold Stainless steel  
 Terminals: Silver or Gold plated brass

HOW TO ORDER



EXAMPLE

TL → 1107 → A → F130 → E → Q

ACTUATOR LENGTH (L)

Model No.	'L' Dim.
TL1107A	4.3mm
TL1107B	5.0mm

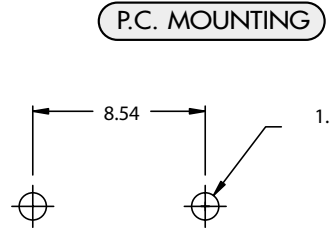
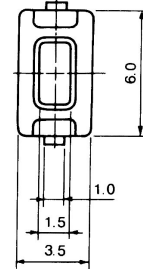
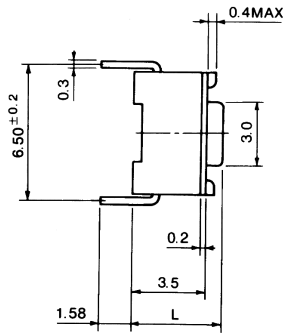
OPERATING FORCE

Operating Force
F130 = 130 ± 50gf
F180 = 180 ± 50gf
F260 = 260 ± 50gf

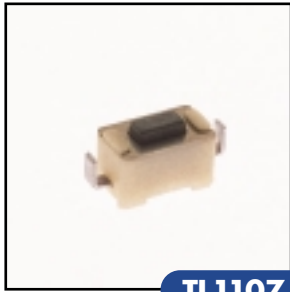
TERMINATION OPTIONS



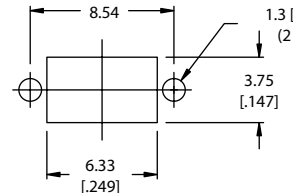
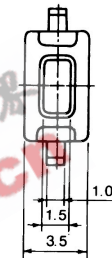
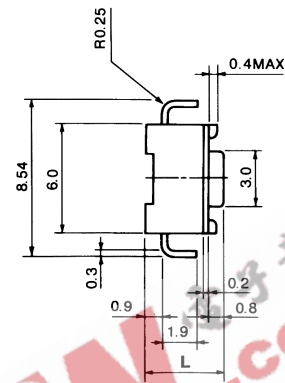
**TL1107**  
**B Termination**  
**(Straight Lead)**



P.C. MOUNTING



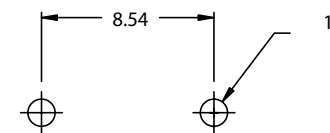
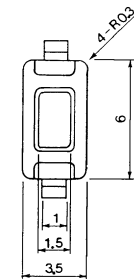
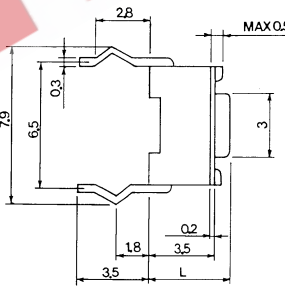
**TL1107**  
**E Termination**  
**(Reverse Lead)**



P.C. MOUNTING



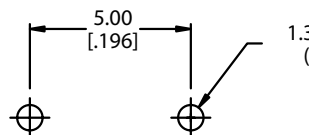
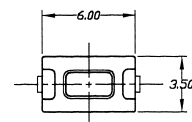
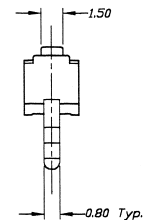
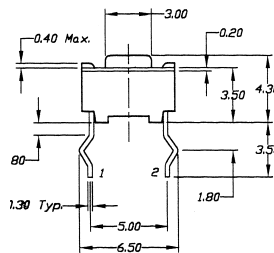
**TL1107**  
**W Termination**  
**(Side Retention Lead)**



P.C. MOUNTING



**TL1107**  
**C Termination**  
**(Base Retention Lead)**



P.C. MOUNTING

SPECIFICATIONS SUBJECT TO CHANGE WITHOUT NOTICE.