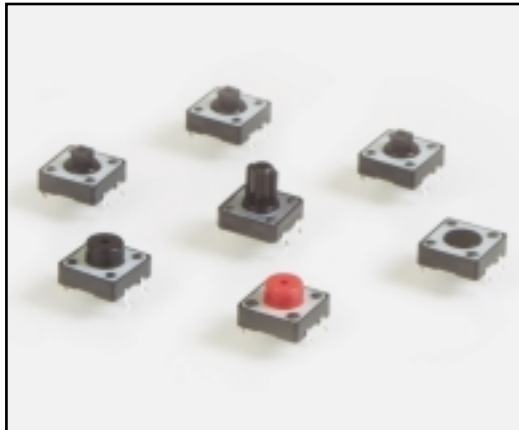


TACT SWITCHES



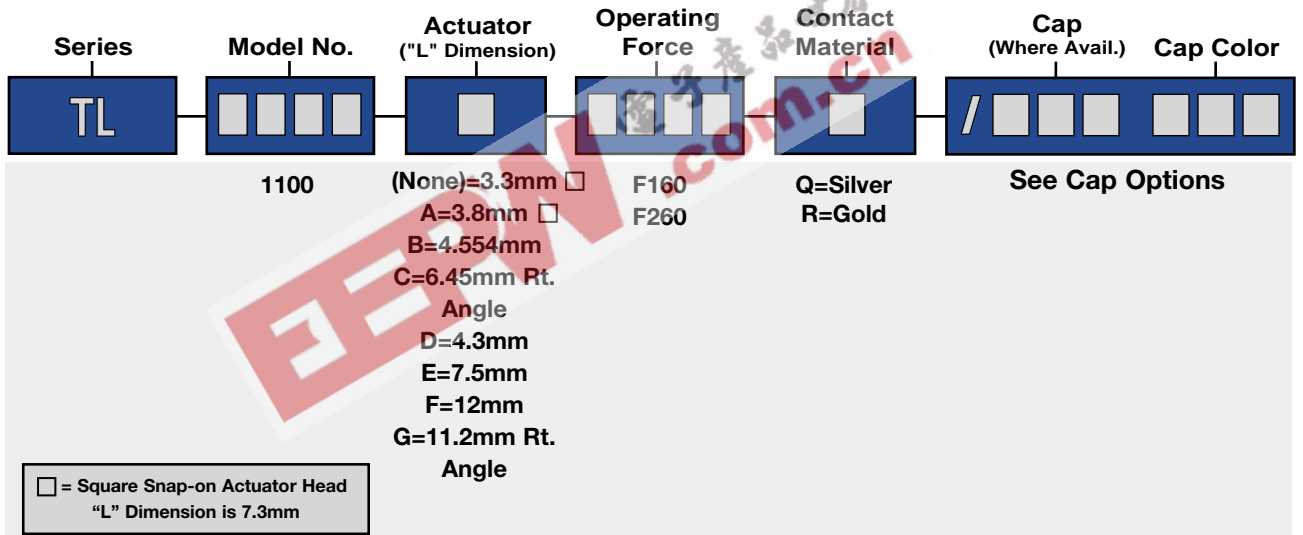
SPECIFICATIONS

Rating:	50mA@50 VDC
Electrical Life:	100,000 cycles
Contact Resistance:	100mΩ max., typical @ 2-4 VDC 100mA for both silver and gold plated contacts
Insulation Resistance:	1,000MΩ min.
Dielectric Strength:	>1,000 V rms at sea level
Operating Force:	160 ± 50 gf, 260 ± 50 gf

MATERIALS

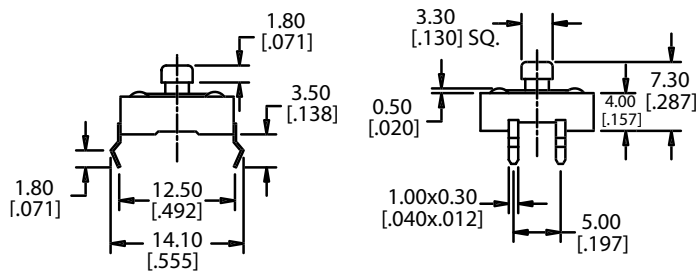
Housing:	Polybutylene Terephthalate (PBT)
Actuator:	Polybutylene Terephthalate (PBT)
Cover:	Polyester
Contacts:	Silver plated phosphor bronze
Terminals:	Silver plated copper alloy

HOW TO ORDER

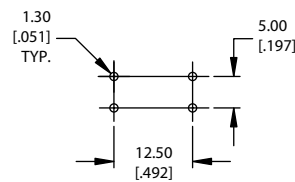


EXAMPLE

TL → 1100 → C → F260 → Q → TAK → GRY



P.C. MOUNTING



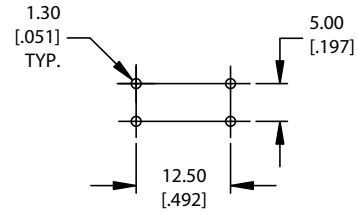
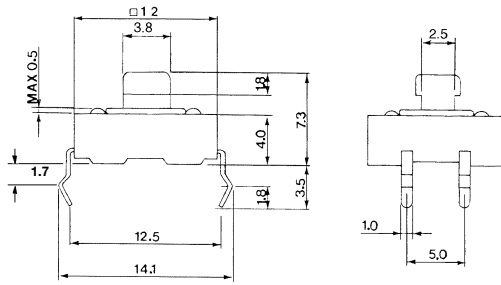
SERIES TL SWITCHES

TACT SWITCH

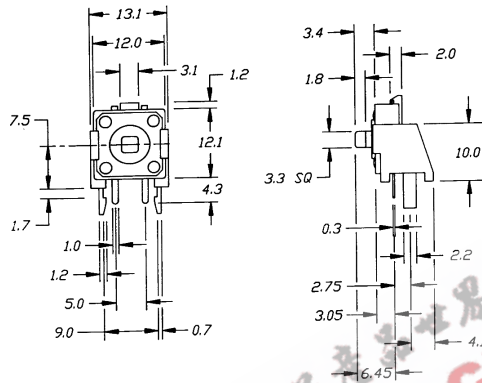
P.C. MOUNTING



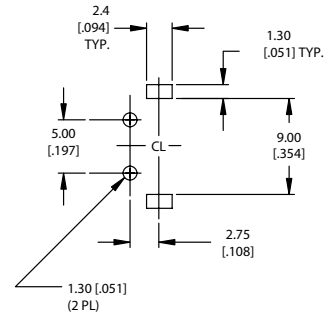
TL 1100 A



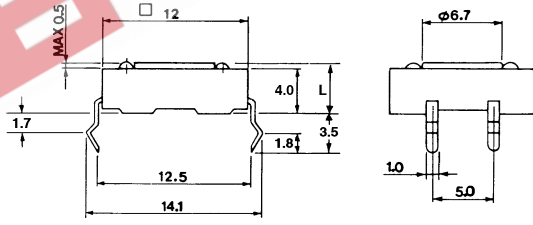
TL 1100 C



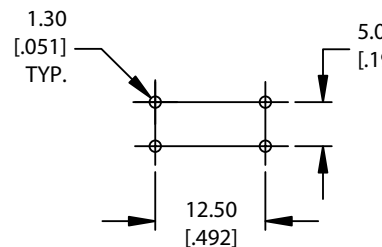
P.C. MOUNTING



TL 1100 B



P.C. MOUNTING

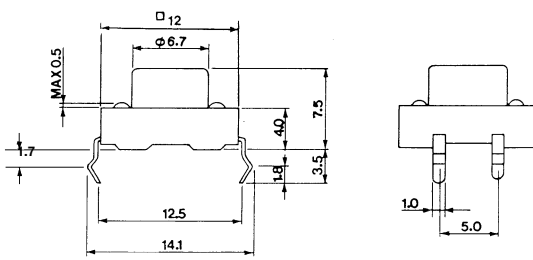


TL 1100 D

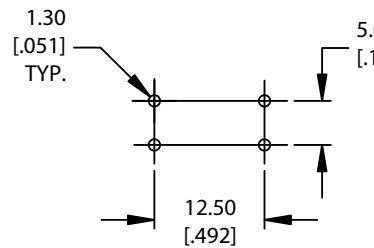
Actuator Length (L) in mm
B = 4.55 mm
D = 4.3 mm



TL 1100 E



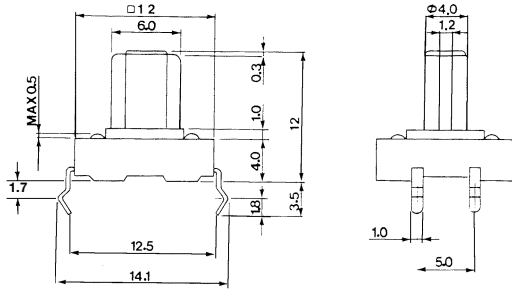
P.C. MOUNTING



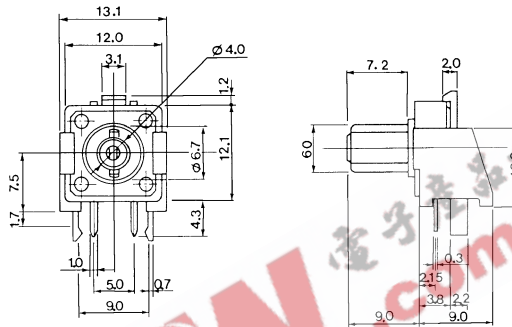
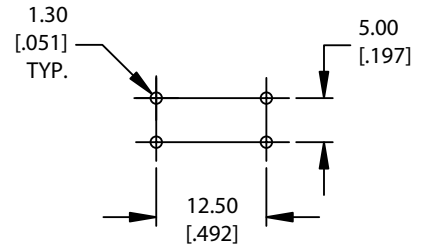
SPECIFICATIONS SUBJECT TO CHANGE WITHOUT NOTICE.

SERIES **TL** SWITCHES

TACT SWITCHES



P.C. MOUNTING



P.C. MOUNTING

