

High Frequency Ceramic Solutions

Preliminary

2.45 GHz Balun / Matching Network : Optimized for TI Chipset CC2520

P/N 2450BM15B0002

Detail Specification: 12/10/2009

Page 1 of 3

General Specifications

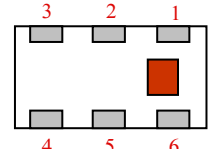
Part Number	2450BM15B0002
Frequency (MHz)	2400 - 2500
Unbalanced Impedance	50 Ω
Differential Balanced Impedance	Conjugate match to TI Chipset 2520
Insertion Loss	1.5 dB max.
Differential Mode Attenuation (dB)	16 min.@ 4800~5000MHz
	25 min.@ 7200~7500MHz

Return Loss	10.0 dB min.
Phase Difference	180° \pm 15
Input Power	2W max.
Reel Quantity	4,000
Operating Temperature	-40 to +85°C
Storage Temperature Range	+5 ~ +35 °C, Humidity 45~75%RH, 12 mos. max

P/N Suffix	Packaging Style	Bulk	Suffix = S	Eg. 2450BM15B0002S
		T & R	Suffix = E	Eg. 2450BM15B0002E
	Termination Style	100% Tin	Suffix = None	Eg. 2450BM15B0002(E or S)
		Tin / Lead	Please consult Factory	

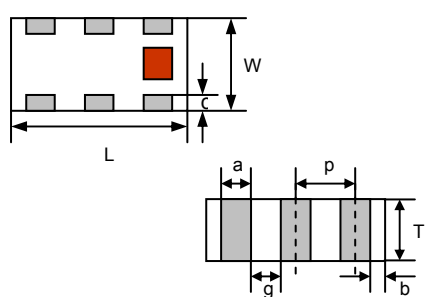
Terminal Configuration

No.	Function
1	Unbalanced Port (2.2nH Ind)*
2	GND
3	Balanced Port
4	Balanced Port
5	GND
6	GND

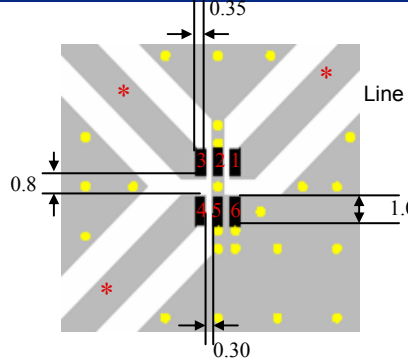


Mechanical Dimensions

	In	mm
L	0.079 \pm 0.004	2.00 \pm 0.10
W	0.049 \pm 0.004	1.25 \pm 0.10
T	0.028 \pm 0.004	0.70 \pm 0.10
a	0.012 \pm 0.004	0.30 \pm 0.10
b	0.008 \pm 0.004	0.20 \pm 0.10
c	0.012 +.004/-0.008	0.30 +0.1/-0.2
g	0.014 \pm 0.004	0.35 \pm 0.10
p	0.026 \pm 0.002	0.65 \pm 0.05



*2.2 nH Ceramic Chip inductor required on unbalanced port. See page 2 for details



Mounting Considerations

Mount these devices with brown mark facing up. Units: mm

Line width should be designed to provide 50 Ω impedance matching characteristics.

- Solder Resist
- Land
- Through-hole (ϕ 0.3)

Johanson Technology, Inc. reserves the right to make design changes without notice.
All sales are subject to Johanson Technology, Inc. terms and conditions.



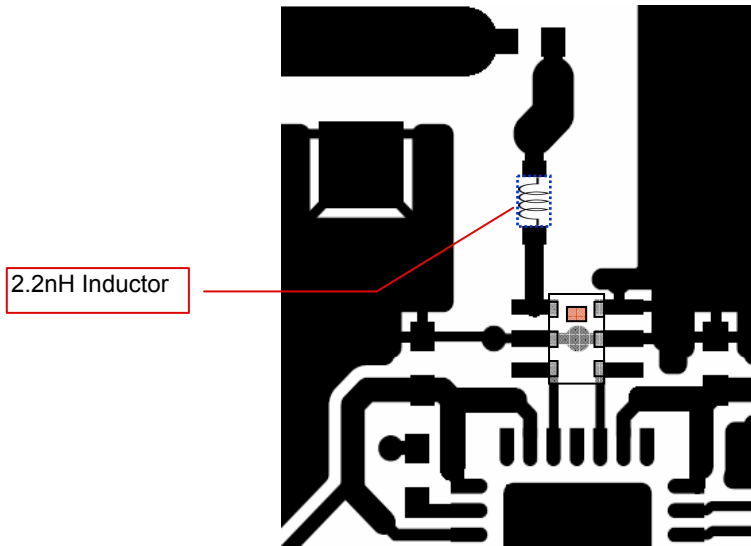
www.johansontechnology.com

4001 Calle Tecate • Camarillo, CA 93012 • TEL 805.389.1166 FAX 805.389.1821

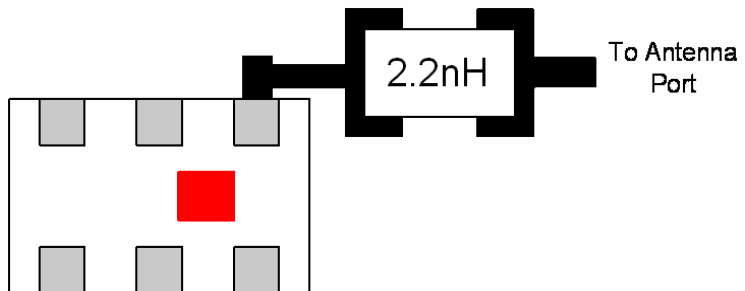
2009 Johanson Technology, Inc. All Rights Reserved

Mounting Considerations

Mounting layout for reference only.
 Mount device with colored mark facing up.
 For detailed dimensions, please contact Johanson Technology or visit TI's CC2520 website:
<http://focus.ti.com/docs/prod/folders/print/cc2520.html>



Component P/N:
 2.2nH Inductor: L-07C2N2SV6T



Johanson Technology, Inc. reserves the right to make design changes without notice.
 All sales are subject to Johanson Technology, Inc. terms and conditions.

High Frequency Ceramic Solutions

Preliminary

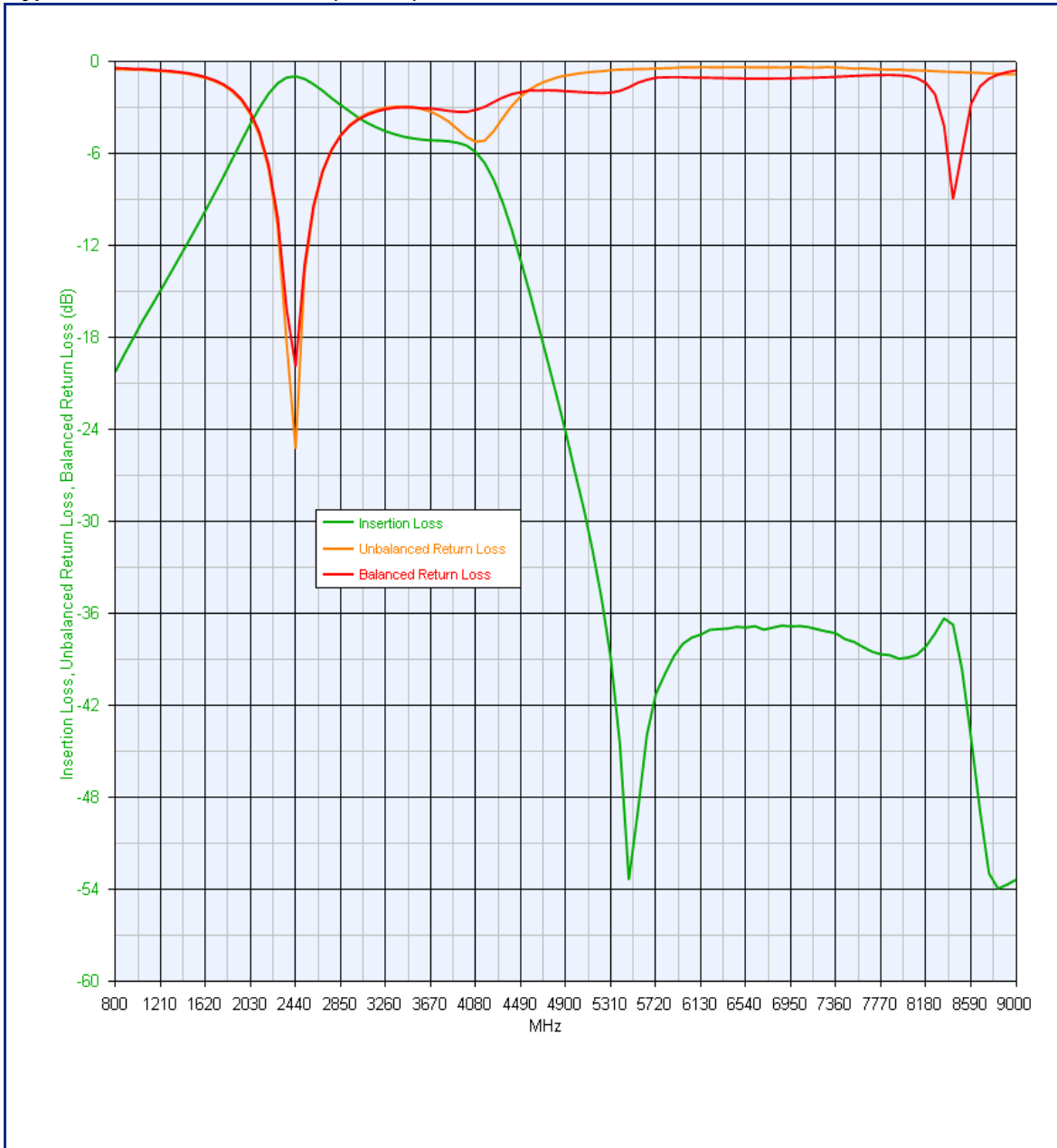
2.45 GHz Balun / Matching Network : Optimized for TI Chipset CC2520

P/N 2450BM15B0002

Detail Specification: 12/10/2009

Page 3 of 3

Typical Electrical Performance (T=25°C)



Johanson Technology, Inc. reserves the right to make design changes without notice.
All sales are subject to Johanson Technology, Inc. terms and conditions.



www.johansontechnology.com
4001 Calle Tecate • Camarillo, CA 93012 • TEL 805.389.1166 FAX 805.389.1821

2009 Johanson Technology, Inc. All Rights Reserved