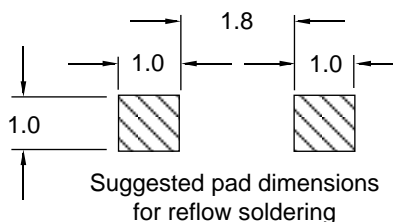
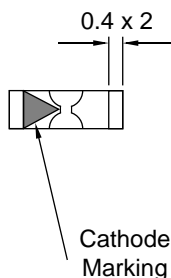
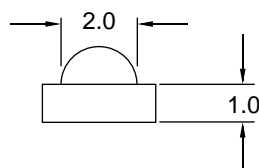
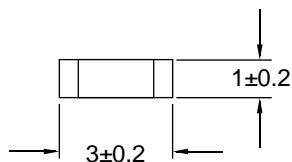


Surface Mount LED, 0128 Series Right Angle Lens



The 0128 series lamps are miniature chip type designed for two-way surface mounting. Mounted normally, these lamps can be used as circuit board status indicators or as backlight for switches or key pads. Mounted at right angles these lamps are miniature through the panel indicators. These lamps are available in EIA481 tape and reel packaging with approximately 2000 pcs per reel.



RoHS Compliant
Aug 2004

GENERAL INFORMATION

Operating Temperature Range	-40 °C to +85 °C
Storage Temperature Range	-40 °C to +90 °C
Reflow Soldering Temperature	260 °C for 5 sec max

APPLICATION INFORMATION (ALL RATINGS AT 25 °C AMBIENT)

Part No.	Emitted Color	Peak	$\Delta\lambda$	Absolute Maximum Ratings					E/O Characteristics					
		λ		Pd	If (mA)		Ir	Vr	Vf (V) @ If=20mA			Iv (mcd) @ If=20mA		$2\Theta_{1/2}$
		(nm)			(mW)	dc			1/10 duty @ 1 kHz	@ Vr=5V (μ A)	Min	Typ	Max	
ISRC0128	Red	660	20	100	30	200	100	5	-	1.8	2.4	7	15	120
IVRC0128	Orange	640	45	70	25	90	100	5	-	2.0	2.8	4	8	120
IVYC0128	Yellow	585	35	70	25	90	100	5	-	2.0	2.8	2	6	120
IVGC0128	Green	570	30	70	25	90	100	5	-	2.1	2.8	5	11	120
IUGC0128	Green	570	30	70	30	100	100	5	-	2.1	2.8	10	15	120
IUYC0128	Yellow	590	15	70	30	160	100	5	-	2.1	2.8	19	33	120
IUOC0128	Orange	620	18	70	50	160	100	5	-	2.1	2.8	26	46	120
IUBC0128	Blue	428	65	140	30	70	50	5	-	3.8	4.5	17	22	120
IUBC0128-7	Blue	468	26	140	30	70	50	5	-	3.5	4.0	23	29	120

Specifications subject to change without notice. Dimensions are in mm±0.3 unless stated otherwise. *reversed polarity

IDEA, Inc., 1351 Titan Way, Brea, CA 92821 Ph:714-525-3302, 800-LED-IDEA; Fax: 714-525-3304 0508

013S-0128