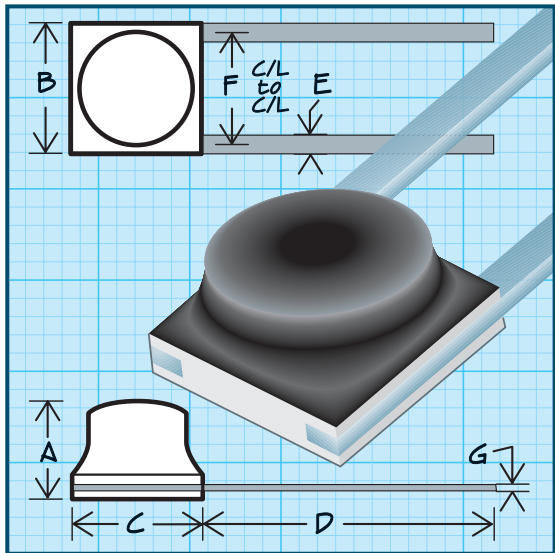


Series 100R 100



Micro i[®] Ribbon-Lead Inductors

RF INDUCTORS



Military Specifications MS21367 (LT10K)

Physical Parameters

	Inches	Millimeters
A	0.065 Max.	1.65 Max.
B	0.100 ± 0.010	2.54 ± 0.254
C	0.100 ± 0.010	2.54 ± 0.254
D	0.210 Min.	5.33 Min.
E	0.012 ± 0.002 (Typ.)	0.30 ± 0.05
F	0.095 ± 0.015	2.41 ± 0.381
G	0.002 +0.001-0.000	0.05 +0.025-0.000

Weight Max. (Grams) 0.03

Current Rating at 90°C Ambient 15°C Rise

Operating Temperature Range -55°C to +105°C

Maximum Power Dissipation at 90°C 0.0205-Watts

Notes 1) L, Q and SRF measured on Boonton Q and RX meters using special test fixtures. Details for fixtures available. 2) Part number and quantity will appear on package as units are too small for legible marking.

Core Material Iron (LT10K)

Mechanical Configuration 1) Units are epoxy encapsulated. 2) Leads are tin/lead plated Beryllium Copper 3) Gold Plated leads available on special order. 4) RoHS compliant part available by ordering 100R Series.

Packaging Bulk only

Made in the U.S.A. Patent Protected

	DASH NUMBER*	MIL DASH #	INDUCTANCE (µH)	TOLERANCE	Q MINIMUM	TEST FREQUENCY (MHz)	SRF MINIMUM (MHz)	DC RESISTANCE MAXIMUM (OHMS)	CURRENT RATING MAX. (mA)
MS21367- SERIES 100 IRON CORE (LT10K)									
-150N	1	0.015	±30%	40	50.0	250	0.065	492	
-220N	2	0.022	±30%	40	50.0	250	0.090	418	
-330N	3	0.033	±30%	40	50.0	250	0.115	370	
-470N	4	0.047	±30%	40	50.0	250	0.120	360	
-680N	5	0.068	±30%	40	50.0	250	0.150	324	
-101N	6	0.100	±30%	40	50.0	250	0.170	304	
-121M	7	0.12	±20%	35	25.0	250	0.140	335	
-151M	8	0.15	±20%	40	25.0	250	0.160	313	
-181M	9	0.18	±20%	40	25.0	250	0.190	287	
-221M	10	0.22	±20%	40	25.0	250	0.21	274	
-271M	11	0.27	±20%	40	25.0	250	0.24	256	
-331M	12	0.33	±20%	40	25.0	250	0.25	251	
-391M	13	0.39	±20%	40	25.0	200	0.28	237	
-471M	14	0.47	±20%	40	25.0	175	0.31	225	
-561M	15	0.56	±20%	40	25.0	170	0.45	185	
-681M	16	0.68	±20%	40	25.0	165	0.62	159	
-821M	17	0.82	±20%	35	25.0	160	0.65	155	
-102M	18	1.00	±20%	35	25.0	135	0.73	145	
-122K	19	1.20	±10%	35	7.9	120	1.00	125	
-152K	20	1.50	±10%	32	7.9	110	1.20	114	
-182K	21	1.80	±10%	32	7.9	95	1.50	102	
-222K	22	2.20	±10%	35	7.9	80	1.70	96	
-272K	23	2.70	±10%	35	7.9	70	2.00	89	
-332K	24	3.30	±10%	37	7.9	65	2.20	84	
-392K	25	3.90	±10%	37	7.9	60	2.80	75	
-472K	26	4.70	±10%	40	7.9	55	3.10	71	
-562K	27	5.60	±10%	40	7.9	50	3.30	69	
-682K	28	6.80	±10%	40	7.9	45	3.80	64	
-822K	29	8.20	±10%	40	7.9	43	5.00	56	
-103K	30	10.0	±10%	40	7.9	40	5.60	53	
Parts listed above are QPL/MIL qualified									
Optional Tolerances: J = 5% H = 3% G = 2% F = 1%									
*Complete part # must include series # PLUS the dash #									
For further surface finish information, refer to TECHNICAL section of this catalog.									

This datasheet has been downloaded from:

www.EEworld.com.cn

Free Download

Daily Updated Database

100% Free Datasheet Search Site

100% Free IC Replacement Search Site

Convenient Electronic Dictionary

Fast Search System

www.EEworld.com.cn