

NOTES:

- Material:
1-1 Housing:LCP,Black,UL94V-0.
1-2 Terminal:Phosphor Bronze.
- Plating:
2-1 Under-Plate Nickel All Over.
2-2 Plate Gold In Contact Area.
2-3 Plate Tin In Tail Zone.
- Coplanarity:0.12 Max.
- Support SM Card/MS/MS Pro/SD Card/MMC/xD Card.
- The Connector With The Floated Mechanism?
If SMC Inserted, XD/ SD/ MMC Will Be Unable To Inset The Slot .
(MS To Be Allowed). If Any One Of xD/SD/MMC/MS Inserted ,
Any Other Card Will Be Unable To Insert The Slot .
- Coplanarity:0.12 Max.

NOTE:

100051FB066□□00ZA

- Selective Plating
S1-05u"Min.Gold in contact area/
100u"Min.Tin in solder area.
S2-Gold flash in contact area/
100u"Min.Tin in solder area.
S3-10u"Min.Gold in contact area/
100u"Min.Tin in solder area.
S4-15u"Min.Gold in contact area/
100u"Min.Tin in solder area.
S5-30u"Min.Gold in contact area/
100u"Min.Tin in solder area.
S6-50u"Min.Gold in contact area/
100u"Min.Tin in solder area.

2	TERMINAL	C5210-EH		Gold/Tin plated
1	PLASTIC	LCP	BLACK	UL94V-0
NO.	DESCRIPTION	MATERIAL	COLOR	REMARK

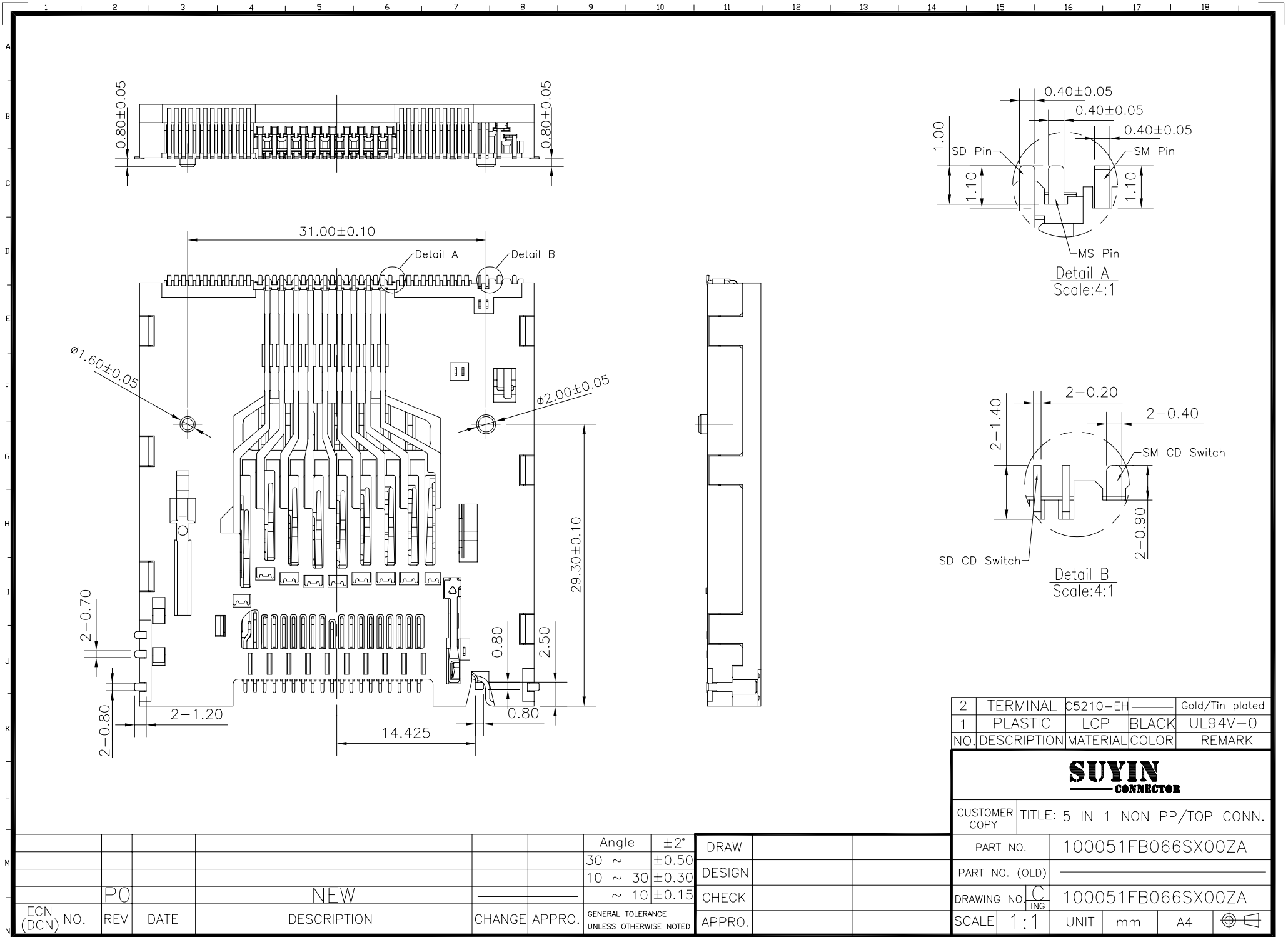
SUYIN
CONNECTOR

CUSTOMER COPY TITLE: 5 IN 1 NON PP/TOP CONN.

PART NO.	100051FB066SX00ZA
PART NO. (OLD)	
DRAWING NO.	C ING 100051FB066SX00ZA
SCALE	1:1
UNIT	mm
A4	⊕

Angle	±2°	DRAW	
30 ~	±0.50	DESIGN	
10 ~ 30	±0.30	CHECK	
~ 10	±0.15	APPRO.	
GENERAL TOLERANCE UNLESS OTHERWISE NOTED			

ECN (DCN) NO.	REV	DATE	DESCRIPTION	CHANGE	APPRO.
	PO		NEW		



2	TERMINAL	C5210-EH		Gold/Tin plated
1	PLASTIC	LCP	BLACK	UL94V-0
NO.	DESCRIPTION	MATERIAL	COLOR	REMARK

SUYIN
CONNECTOR

CUSTOMER COPY TITLE: 5 IN 1 NON PP/TOP CONN.

PART NO.	100051FB066SX00ZA
PART NO. (OLD)	
DRAWING NO.	C ING 100051FB066SX00ZA
SCALE	1:1
UNIT	mm
A4	⊕

ECN (DCN) NO.	REV	DATE	DESCRIPTION	CHANGE	APPRO.	GENERAL TOLERANCE UNLESS OTHERWISE NOTED	APPRO.
	PO		NEW			Angle ±2°	
						30 ~ ±0.50	DRAW
						10 ~ 30 ±0.30	DESIGN
						~ 10 ±0.15	CHECK
							APPRO.

