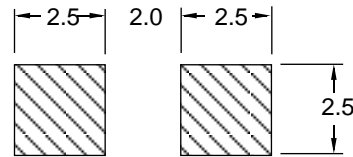
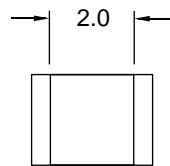
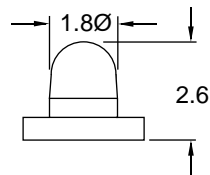
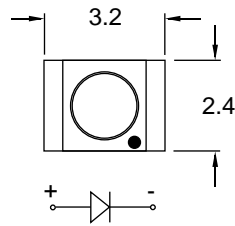


# Surface Mount LED, 0428 Series 1.8 mm Round



The 0420 series lamps are miniature lens type designed for surface mounting. The high intensity is achieved by molding a focusing lens onto the substrate. These lamps measure approximately 2.4 x 3.2 mm. These lamps are available in EIA481 tape and reel packaging by specifying the series number is 0428.



Suggested pad dimensions  
for reflow soldering



RoHS Compliant  
Aug 2004

## GENERAL INFORMATION

Operating Temperature Range	-40 °C to +85 °C
Storage Temperature Range	-40 °C to +90 °C
Reflow Soldering Temperature	260 °C for 5 sec max

## APPLICATION INFORMATION (ALL RATINGS AT 25 °C AMBIENT)

Part No.	Emitted Color	Peak	$\Delta\lambda$	Absolute Maximum Ratings					E/O Characteristics					
		$\lambda$		Pd	If (mA)		Ir	Vr	Vf (V) @ If=20mA			Iv (mcd) @ If=20mA		$2\theta_{1/2}$
		(nm)			(mW)	dc			1/10 duty @ 1 kHz	@ Vr=5V ( $\mu$ A)	(V)	Min	Typ	
ISRC0428	Red	660	20	100	30	200	100	5	-	1.7	2.4	114	190	30
IVRC0428	Red	640	45	70	25	90	100	5	-	2.0	2.8	23	39	30
IVYC0428	Yellow	585	35	70	20	90	100	5	-	2.0	2.8	35	58	30
IVGC0428	Green	570	30	70	25	90	100	5	-	2.1	2.8	73	122	30
IURC0428*	Red	660	20	100	30	200	100	5	-	1.7	2.4	290	484	30
IUGC0428	Green	570	30	70	30	160	100	5	-	2.1	2.8	75	125	30
IUYC0428	Yellow	590	15	70	30	160	100	5	-	2.1	2.8	346	606	30
IUBC0428	Blue	428	65	140	30	70	50	5	-	3.8	4.5	89	112	30
IUBC0428-7	Blue	468	26	140	30	70	50	5	-	3.5	4.0	118	150	30

Specifications subject to change without notice. Dimensions are in mm $\pm$ 0.3 unless stated otherwise. \*reversed polarity

IDEA, Inc., 1351 Titan Way, Brea, CA 92821 Ph:714-525-3302, 800-LED-IDEA; Fax: 714-525-3304 0508

013S-0428