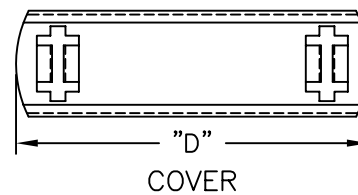
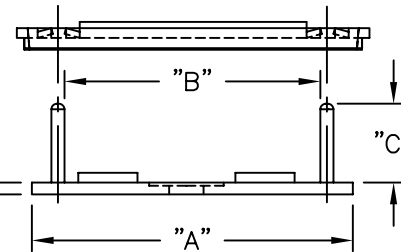
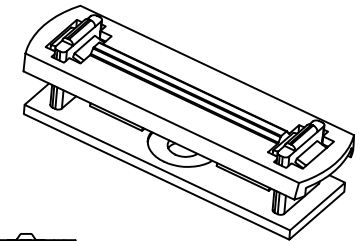


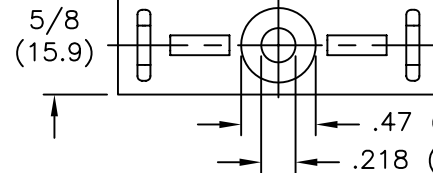
BASE PART NO.	"A" REF.	"B" REF.	"C"	COVER PART NO.	"D" REF.
FCRC-13B-4-01	2.04 (51.7)	1.62 (41.2)	1/2 (12.7)	FCRC-13C	2.24 (56.8)
FCRC-13B-6-01			3/4 (19.1)		
FCRC-19B-4-01	2.72 (69.1)	2.31 (58.7)	1/2 (12.7)	FCRC-19C	2.92 (74.2)
FCRC-19B-6-01			3/4 (19.1)		
FCRC-21B-4-01	2.98 (75.7)	2.55 (64.8)	1/2 (12.7)	FCRC-21C	3.17 (80.5)
FCRC-21B-6-01			3/4 (19.1)		
FCRC-26B-4-01	3.66 (93.0)	3.24 (82.3)	1/2 (12.7)	FCRC-26C	3.86 (98.0)
FCRC-26B-6-01			3/4 (19.1)		



COVER



.075±.010  
(1.9±0.25)



BASE

NOTES:

- MATERIAL: NYLON 6/6 (RMS-01).  
FLAME RETARDANT NYLON (RMS-19),  
AVAILABLE BY SPECIAL ORDER ONLY.
- COLOR: NATURAL.
- TAPE:  
1/32 (0.8) THICK, ACRYLIC ADHESIVE TAPE  
(RMS-15), WHITE LINER,  
AVAILABLE BY SPECIAL ORDER ONLY.  
TO ORDER, SPECIFY A-RT AS SUFFIX.  
1/32 (0.8) THICK, RUBBER ADHESIVE TAPE  
(RMS-102), BLUE LINER,  
AVAILABLE BY SPECIAL ORDER ONLY.  
TO ORDER, SPECIFY A1-RT AS SUFFIX.

TITLE: FLAT CABLE ROUTING CLAMP				DWG IN IN (MM)		FINAL			
TOLERANCES UNLESS NOTED .XX=±.010 .XXX=±.005 FRAC=±1/64 ANG=±1°		FILE # FCRC	DWN: SM	APP:	PART #		PRINT TYPE		
-		MAT'L: SEE NOTES	DT: 03/05/02	DT:	SEE TABLE		CA		
E COMPLETELY RE-DRAWN SM 03.05.02		RE: RICHCO, INC.		RICHCO INC. PO BOX 804238, CHICAGO, 60680 (773) 539-4060					
- SEE ENGINEERING FOR REV A-D									
REV DESCRIPTION ENGR DATE									

E	COMPLETELY RE-DRAWN	SM 03.05.02
-	SEE ENGINEERING FOR REV A-D	-
REV	DESCRIPTION	ENGR DATE