

All rights strictly reserved. Reproduction or issue to third parties in any form whatever is not permitted without written authority from the proprietor. Property of FCI. Copyright FCI.

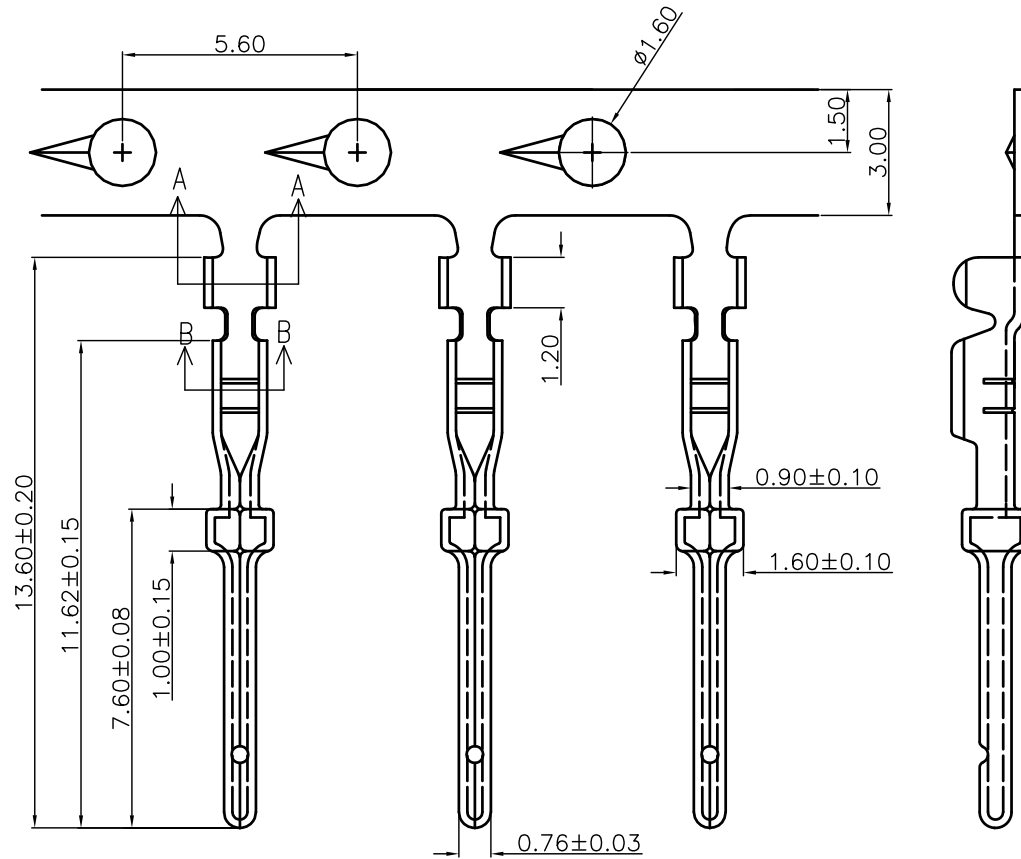


Tous droits strictement réservés. Reproduction ou communication à des tiers interdite sous quelque forme que ce soit sans autorisation écrite du propriétaire. Propriété de c FCI. Droits de reproduction FCI.

1 | 2

3

4



REMARK:

1. MATERIALS:

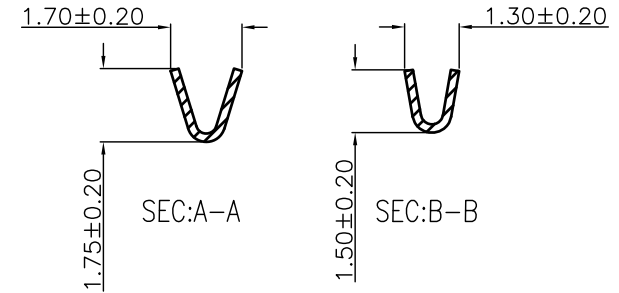
CONTACTS: COPPER ALLOY, GOLD(G\F or 30u") TOP OVER CONTACT AREA, 50u" Min. NICKEL UNDER PLATE.

2. PART NUMBER DESCRIPTION:

**10090932-P XX X X LF**

SERIES NO. \_\_\_\_\_  
 TYPE \_\_\_\_\_  
 P: FIN (MALE) \_\_\_\_\_  
 GAUGE SIZE \_\_\_\_\_  
 24: 24-28(AWG)

LF: ROHS COMPLIANT  
 PACKAGING  
 8: BOX, 500 PCS  
 9: REEL, 10K PCS  
 CONTACT FINISH  
 4: GOLD FLASH  
 6: 30u" GOLD



SIZE	PART NO.	PACKAGING
24-28AWG	10090932-P24*8LF	BOX, 500PCS
24-28AWG	10090932-P24*9LF	REEL, 10KPCS

mat'l. code				tolerances unless otherwise specified				CUSTOMER COPY		FCI		www.fciconnect.com		
ltr	ecn no	dr	date	linear	.X ± 0.38				projection	title				
A	T09-1157	J.H	12/10/09		.XX ± 0.25					H/D D-SUB CRIMPING MALE CONTACT	product family		D-SUB	
					.XXX ± 0.10						size		dwg no	
				angles	0° ± 2'				MM	scale		sheet		
				dr	JASON HSU	12/10/09		A4		10090932		1 of 1		
				enr	JASON HSU	12/10/09								
				chr	GARY HSIEH	12/10/09								
				appd	JOSEPH HSIA	12/10/09								
sheet index	revision	A												
	sheet	01												

1 | 2

3

4

ACAD

PDM: Rev:A

STATUS: Released

Printed: Dec 22, 2009