

PLEASE CHECK WWW.MOLEX.COM FOR LATEST PART INFORMATION

Part Number: [0500618000](#)
Status: **Active**
Description: 1.25mm (.049") Pitch Board-In Crimp Terminal, 28-32 AWG, Reel

Documents:

[3D Model](#) [Product Specification PS-51022-001 \(PDF\)](#)
[Drawing \(PDF\)](#) [RoHS Certificate of Compliance \(PDF\)](#)

General

Product Family Crimp Terminals
 Series [50061](#)
 Crimp Quality Equipment Yes
 Product Name Board-In

Physical

Gender Male
 Material - Metal Phosphor Bronze
 Material - Plating Mating Tin
 Material - Plating Termination Tin
 Packaging Type Reel
 Plating min: Mating (µin) 36
 Plating min: Mating (µm) 0.90
 Plating min: Termination (µin) 36
 Plating min: Termination (µm) 0.90
 Termination Interface: Style Crimp or Compression
 Wire Insulation Diameter 0.50-1.00mm (.020-.039")
 Wire Size AWG 28, 30, 32
 Wire Size mm² N/A

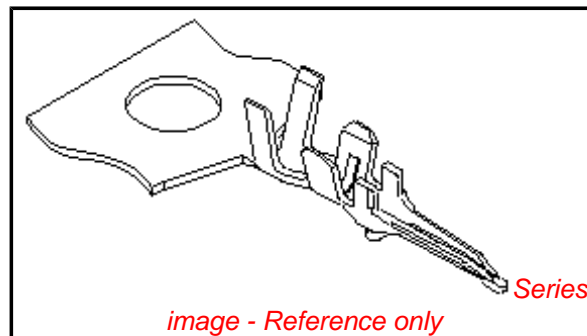
Electrical

Current - Maximum per Contact 0.8A, 1A
 Voltage - Maximum 125V

Material Info

Reference - Drawing Numbers

Product Specification PS-51022-001, RPS-51022-001
 Sales Drawing SD-50061-8*00



EU RoHS

ELV and RoHS Compliant
REACH SVHC
Contains SVHC: No
Halogen-Free Status
Halogen-Free

China RoHS



Need more information on product environmental compliance?

Email productcompliance@molex.com
 For a multiple part number RoHS Certificate of Compliance, [click here](#)

Please visit the [Contact Us](#) section for any non-product compliance questions.

Search Parts in this Series

[50061Series](#)

Use With

[51022](#)

Application Tooling | FAQ

Tooling specifications and manuals are found by selecting the products below. Crimp Height Specifications are then contained in the Application Tooling Specification document.

Global

Description	Product #
Extraction Tool	0011030043
FineAdjust™	0639004200
Applicator for 1.25mm (.049") Pitch Board In, Wire-to-Board and Wire-to-Wire Terminal, 26-32 AWG	
T2 Terminator	0639104200
Tooling Die	
Hand Crimp Tool for 1.25mm (.049") Pitch	0638190300

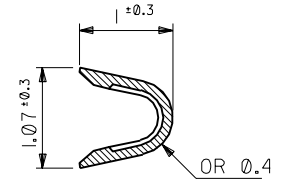
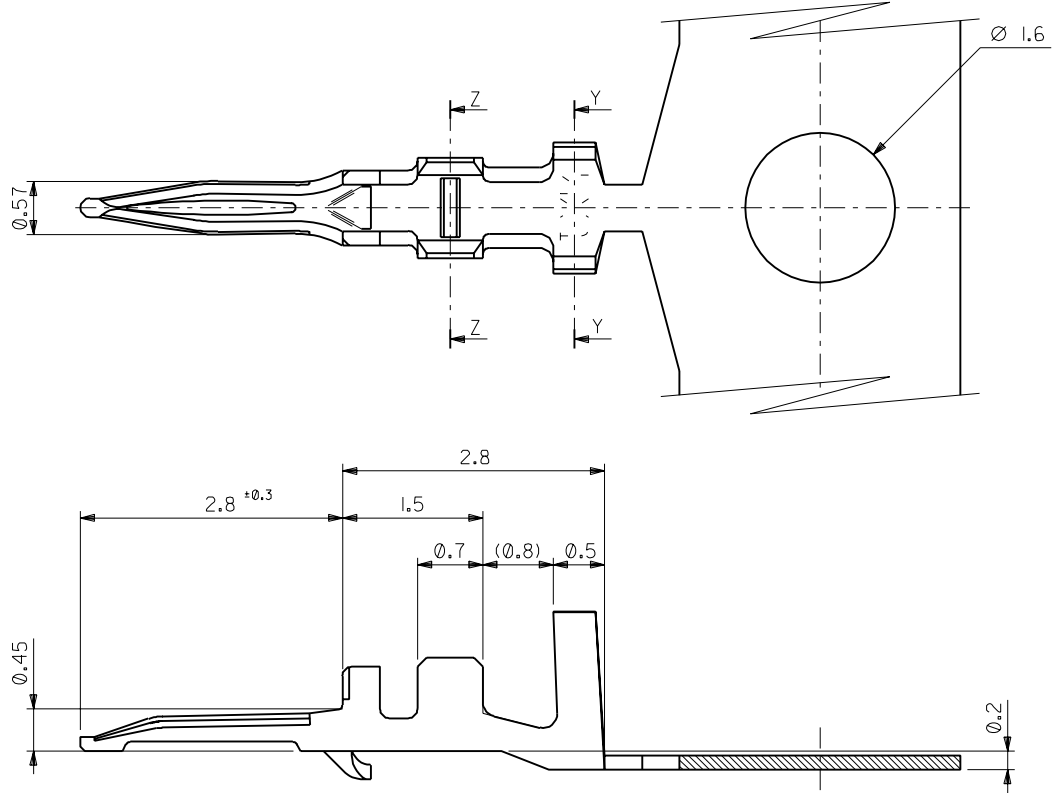
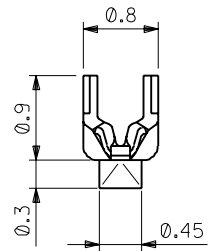
PicoBlade™ Crimp
Terminals, 26-32
AWG

Japan

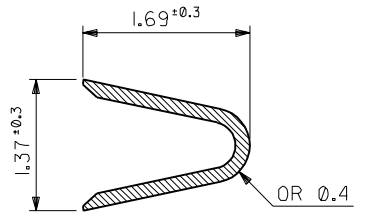
Description	Product #
Applicator for M211A Bench Press, 26-32 AWG, for 50061 Crimp Terminal	<u>0570693000</u>
Extraction Tool	<u>0570726000</u>
Side-Feed Applicator For Full-Auto Machine	<u>0570693200</u>

This document was generated on 04/15/2010

PLEASE CHECK WWW.MOLEX.COM FOR LATEST PART INFORMATION



SECT. Z-Z



SECT. Y-Y

注記
NOTES

- 適合ハウジング: 51022 シリーズ
APPLICABLE HOUSING : 51022 SERIES
- メッキ仕様 PLATING
錫 0.9µm MIN. リフロー処理 (前メッキ)
TIN 0.9µm MIN. REFLOW TREATMENT (PRE-PLATED)

角度 ANGLE		±3°				材料 リン青銅 PHOSPHOR BRONZE (t=0.15)	
30 以上 OVER		+0.3				仕上げ FINISH — —	
10 以上 30 未満 OVER UNDER		+0.25		E 変更 REVISED (J30697)		適用電線範囲 WIRE RANGE AWG #28-32	
10 未満 UNDER		+0.2		D 変更 & 再作図 REVISED & REDRAWN (J20810)		被覆外径 INS. RANGE Ø 0.5-1.0	
一般公差 GENERAL TOLERANCES		記号 LTR		変更内容 REVISION RECORD		DR. 日付 CHK. DATE	
				H.H. M.F. '93/7/12		DRAWN BY '92/10/22 CHK'D BY '93/7/12 H.HIRAMOTO H.HIRAMOTO	
				H.H. M.F. '92/10/27		APP'D BY '93/7/13 尺度 M.FUKUSHIMA SCALE 20 - 1	

50061-8100	バラ状 LOOSE
50061-8000	連鎖状 CHAIN
ENG. NO.	端子形状 FORM

molex MOLEX-JAPAN CO.,LTD. 日本モレックス株式会社	
REVISE ONLY ON CAD SYSTEM	
TITLE 名称 1.25 BOARD IN CRIMP TERMINAL	
DWG. NO.	REV
SD-50061-8*00	E