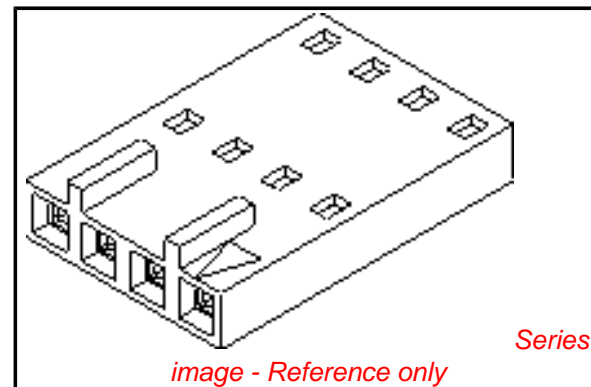


**PLEASE CHECK WWW.MOLEX.COM FOR LATEST PART INFORMATION**

**Part Number:** [0050579219](#)  
**Status:** **Active**  
**Overview:** [cgrid\\_sl\\_products](#)  
**Description:** 2.54mm (.100") Pitch SL™ Crimp Housing, Single Row, Version C, Front Ribs, 19 Circuits

**Documents:**

|   |  |
|---|--|
| <a href="#">3D Model</a>                      | <a href="#">Product Specification PS-70058 (PDF)</a> |
| <a href="#">Drawing (PDF)</a>                 | <a href="#">Product Specification PS-70400 (PDF)</a> |
| <a href="#">Packaging Specification (PDF)</a> | <a href="#">RoHS Certificate of Compliance (PDF)</a> |



**Agency Certification**

|     |           |
|-----|-----------|
| CSA | LR19980   |
| TUV | R72081037 |
| UL  | E29179    |

**General**

|                |                                   |
|----------------|-----------------------------------|
| Product Family | Crimp Housings                    |
| Series         | <a href="#">70066</a>             |
| Comments       | Version C                         |
| Overview       | <a href="#">cgrid_sl_products</a> |
| Product Name   | SL™                               |

**Physical**

|                               |                 |
|-------------------------------|-----------------|
| Circuits (maximum)            | 19              |
| Color - Resin                 | Black           |
| Flammability                  | 94V-0           |
| Gender                        | Female          |
| Glow-Wire Compliant           | No              |
| Material - Resin              | Polyester Alloy |
| Number of Rows                | 1               |
| Packaging Type                | Bag             |
| Panel Mount                   | No              |
| Pitch - Mating Interface (in) | 0.100 In        |
| Pitch - Mating Interface (mm) | 2.54 mm         |
| Stackable                     | No              |
| Temperature Range - Operating | -40°C to +105°C |

**Material Info**

|                 |            |
|-----------------|------------|
| Old Part Number | 70066-0088 |
|-----------------|------------|

**Reference - Drawing Numbers**

|                         |                    |
|-------------------------|--------------------|
| Packaging Specification | PK-70066-100       |
| Product Specification   | PS-70058, PS-70400 |
| Sales Drawing           | SD-70066-0071-0094 |
| Test Summary            | TS-70058-001       |

|   |  |
|---|--|
| <b>EU RoHS</b><br><b>ELV and RoHS</b><br><b>Compliant</b><br><b>REACH SVHC</b><br><b>Contains SVHC: No</b><br><b>Halogen-Free</b><br><b>Status</b><br><b>Not Reviewed</b> | <b>China RoHS</b><br> |
|---|--|

**Need more information on product environmental compliance?**

Email [productcompliance@molex.com](mailto:productcompliance@molex.com)  
 For a multiple part number RoHS Certificate of Compliance, [click here](#)

Please visit the [Contact Us](#) section for any non-product compliance questions.

**Search Parts in this Series**

[70066Series](#)

**Mates With**

[70544](#), [70546](#), [70554](#) , [70556](#), [70543](#), [70545](#) , [70553](#) , [70555](#)

**Use With**

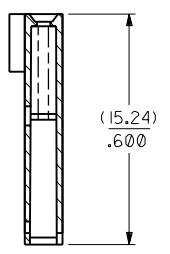
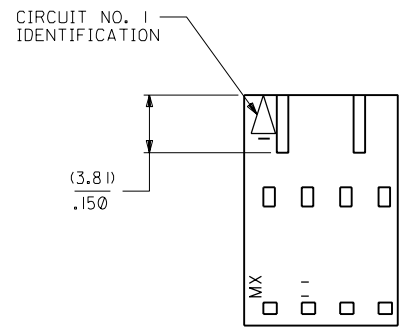
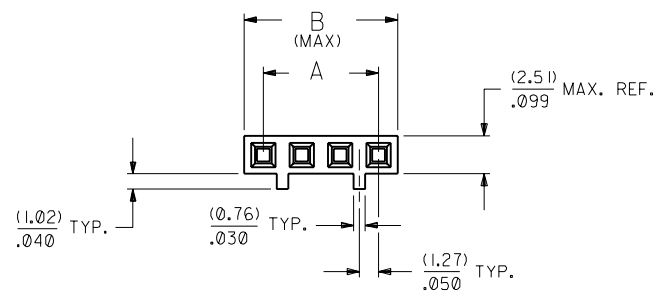
[70058](#) , [71851](#)

70066

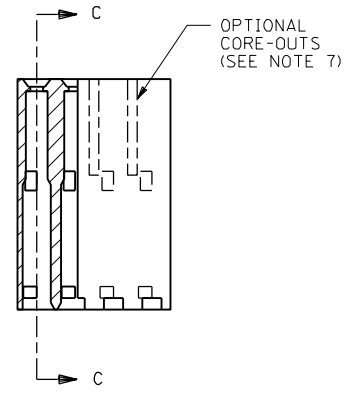
**NOTES:**

- 1) MATERIAL: G.F. POLYESTER
- 2) HOUSING TO BE USE WITH TERMINAL PT. NO. 70058-\*\*\*\*
- 3) SEE CHART FOR CIRCUIT SIZES.
- 4) TO BE USED WITH (0.64)/.025 SQ. OR RD. PINS.
- 5) PARTS STACKABLE END TO END ON (2.54)/.100 CENTERS.
- 6) REFER TO PRODUCT SPECIFICATION NO. : P.S.-70058
- 7) PARTS MAY OR MAY NOT BE SUPPLIED WITH EXTERIOR CORE-OUT CONFIGURATION. SEE DWG. SD-70066-\*\*\*\* FOR OPTIONAL HOUSING DETAILS.
- 8) PACKAGE PER PK-70066-100.

**OPTION "C"**



SECTION C-C



| CKT. SIZE | EDP. NO.   | ENG. NO.   | A               | B               |
|-----------|------------|------------|-----------------|-----------------|
| 2         | 50-57-9202 | 70066-0071 | (2.54) / .100   | (5.05) / .199   |
| 3         | 50-57-9203 | 70066-0072 | (5.08) / .200   | (7.59) / .299   |
| 4         | 50-57-9204 | 70066-0073 | (7.62) / .300   | (10.13) / .399  |
| 5         | 50-57-9205 | 70066-0074 | (10.16) / .400  | (12.67) / .499  |
| 6         | 50-57-9206 | 70066-0075 | (12.70) / .500  | (15.21) / .599  |
| 7         | 50-57-9207 | 70066-0076 | (15.24) / .600  | (17.75) / .699  |
| 8         | 50-57-9208 | 70066-0077 | (17.78) / .700  | (20.29) / .799  |
| 9         | 50-57-9209 | 70066-0078 | (20.32) / .800  | (22.83) / .899  |
| 10        | 50-57-9210 | 70066-0079 | (22.86) / .900  | (25.37) / .999  |
| 11        | 50-57-9211 | 70066-0080 | (25.40) / 1.000 | (27.91) / 1.099 |
| 12        | 50-57-9212 | 70066-0081 | (27.94) / 1.100 | (30.45) / 1.199 |
| 13        | 50-57-9213 | 70066-0082 | (30.48) / 1.200 | (32.99) / 1.299 |
| 14        | 50-57-9214 | 70066-0083 | (33.02) / 1.300 | (35.53) / 1.399 |
| 15        | 50-57-9215 | 70066-0084 | (35.56) / 1.400 | (38.07) / 1.499 |
| 16        | 50-57-9216 | 70066-0085 | (38.10) / 1.500 | (40.61) / 1.599 |
| 17        | 50-57-9217 | 70066-0086 | (40.64) / 1.600 | (43.15) / 1.699 |
| 18        | 50-57-9218 | 70066-0087 | (43.18) / 1.700 | (45.69) / 1.799 |
| 19        | 50-57-9219 | 70066-0088 | (45.72) / 1.800 | (48.23) / 1.899 |
| 20        | 50-57-9220 | 70066-0089 | (48.26) / 1.900 | (50.77) / 1.999 |
| 21        | 50-57-9221 | 70066-0090 | (50.80) / 2.000 | (53.31) / 2.099 |
| 22        | 50-57-9222 | 70066-0091 | (53.34) / 2.100 | (55.85) / 2.199 |
| 23        | 50-57-9223 | 70066-0092 | (55.88) / 2.200 | (58.39) / 2.299 |
| 24        | 50-57-9224 | 70066-0093 | (58.42) / 2.300 | (60.93) / 2.399 |
| 25        | 50-57-9225 | 70066-0094 | (60.96) / 2.400 | (63.47) / 2.499 |

|  |  |  |  |  |  |   |  |
|--|--|--|--|--|--|---|--|
| REVISIONS<br>LTR. REVISIONS LTR. REVISIONS |  | E REVISOR PER ECR# U10967 8-8-91 MJM/MGB<br>D REVISOR PER ECR# U80051 3-27-89 MCB<br>C REDRAWN ON CAD ECR # 9120 5/5/86 WZ |  | DIMENSIONS SHOWN (METRIC) INCH<br>UNLESS OTHERWISE SPECIFIED TOLERANCES: ANGULAR ± 1/2°<br>3 PLACE ± .010 INCH --- METRIC<br>2 PLACE ± .014 ± 0.25<br>1 PLACE --- ± 0.35<br>DRAFT WHERE APPLICABLE MUST REMAIN WITHIN DIMENSIONS<br>DRWG. NO. SD-70066-0071-0094<br>FILE NAME 700660071 THIS DRAWING CONTAINS INFORMATION THAT IS PROPRIETARY TO MOLEX INC. AND SHOULD NOT BE USED WITHOUT WRITTEN PERMISSION. |  | MFG. SH. REV.<br>REVISIONS<br>TITLE HOUSING CONNECTOR (2.54)/.100 GRID STACKABLE SINGLE ROW<br>SHEET NO. 1 DATE 03/26/86<br>MOLEX INCORPORATED U.S.A. L1SLE,ILL. 60532<br>DIV. DA |  |
|--|--|--|--|--|--|---|--|