

**PLEASE CHECK WWW.MOLEX.COM FOR LATEST PART INFORMATION**

**Part Number:** [0717640014](#)  
**Status:** **Active**  
**Description:** 2.54mm (.100") Pitch C-Grid® Breakaway Header, Low Profile, Dual Row, Right Angle, High Temperature, 14 Circuits, Tin (Sn) Plating

**Documents:**

|   |  |
|---|--|
| <a href="#">3D Model</a>                      | <a href="#">Product Specification PS-71764 (PDF)</a> |
| <a href="#">Packaging Specification (PDF)</a> | <a href="#">RoHS Certificate of Compliance (PDF)</a> |
| <a href="#">Drawing (PDF)</a>                 |  |

**Agency Certification**

|     |         |
|-----|---------|
| CSA | LR19980 |
| UL  | E29179  |

**General**

|                |                               |
|----------------|-------------------------------|
| Product Family | PCB Headers                   |
| Series         | <a href="#">71764</a>         |
| Application    | Board-to-Board, Wire-to-Board |
| Product Name   | C-Grid®                       |

**Physical**

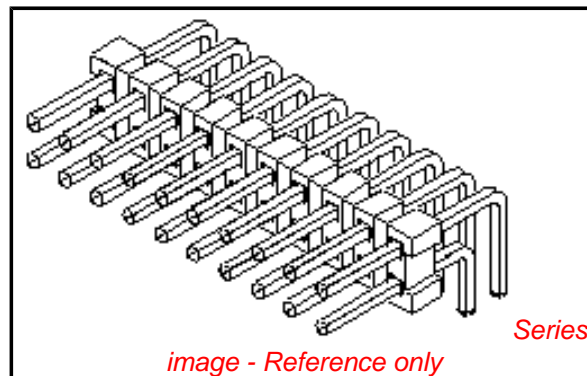
|                                |                        |
|--------------------------------|------------------------|
| Breakaway                      | Yes                    |
| Circuits (Loaded)              | 14                     |
| Circuits (maximum)             | 14                     |
| Durability (mating cycles max) | 25                     |
| Flammability                   | 94V-0                  |
| Glow-Wire Compliant            | No                     |
| Lock to Mating Part            | None                   |
| Material - Metal               | Brass, Phosphor Bronze |
| Material - Plating Mating      | Tin                    |
| Material - Plating Termination | Tin                    |
| Number of Rows                 | 2                      |
| Orientation                    | Right Angle            |
| PC Tail Length (in)            | 0.110 In               |
| PC Tail Length (mm)            | 2.79 mm                |
| PCB Locator                    | No                     |
| PCB Retention                  | None                   |
| Packaging Type                 | Tube                   |
| Pitch - Mating Interface (in)  | 0.100 In               |
| Pitch - Mating Interface (mm)  | 2.54 mm                |
| Plating min: Mating (µin)      | 150                    |
| Plating min: Mating (µm)       | 3.75                   |
| Plating min: Termination (µin) | 150                    |
| Plating min: Termination (µm)  | 3.75                   |
| Polarized to Mating Part       | No                     |
| Shrouded                       | No                     |
| Stackable                      | Yes                    |
| Temperature Range - Operating  | -40°C to +105°C        |
| Termination Interface: Style   | Through Hole           |

**Electrical**

|                               |      |
|-------------------------------|------|
| Current - Maximum per Contact | 3A   |
| Voltage - Maximum             | 250V |

**Solder Process Data**

|                              |                              |
|------------------------------|------------------------------|
| Lead-free Process Capability | SMC & Wave Capable (TH only) |
| Process Temperature max. C   | 260                          |



**EU RoHS**

**ELV and RoHS Compliant**

**REACH SVHC**

Not Reviewed

**Halogen-Free**

**Status**

**Not Reviewed**

**Need more information on product environmental compliance?**

Email [productcompliance@molex.com](mailto:productcompliance@molex.com)  
 For a multiple part number RoHS Certificate of Compliance, [click here](#)

Please visit the [Contact Us](#) section for any non-product compliance questions.

**China RoHS**



**Search Parts in this Series**

[71764Series](#)

**Material Info**

**Reference - Drawing Numbers**

Product Specification

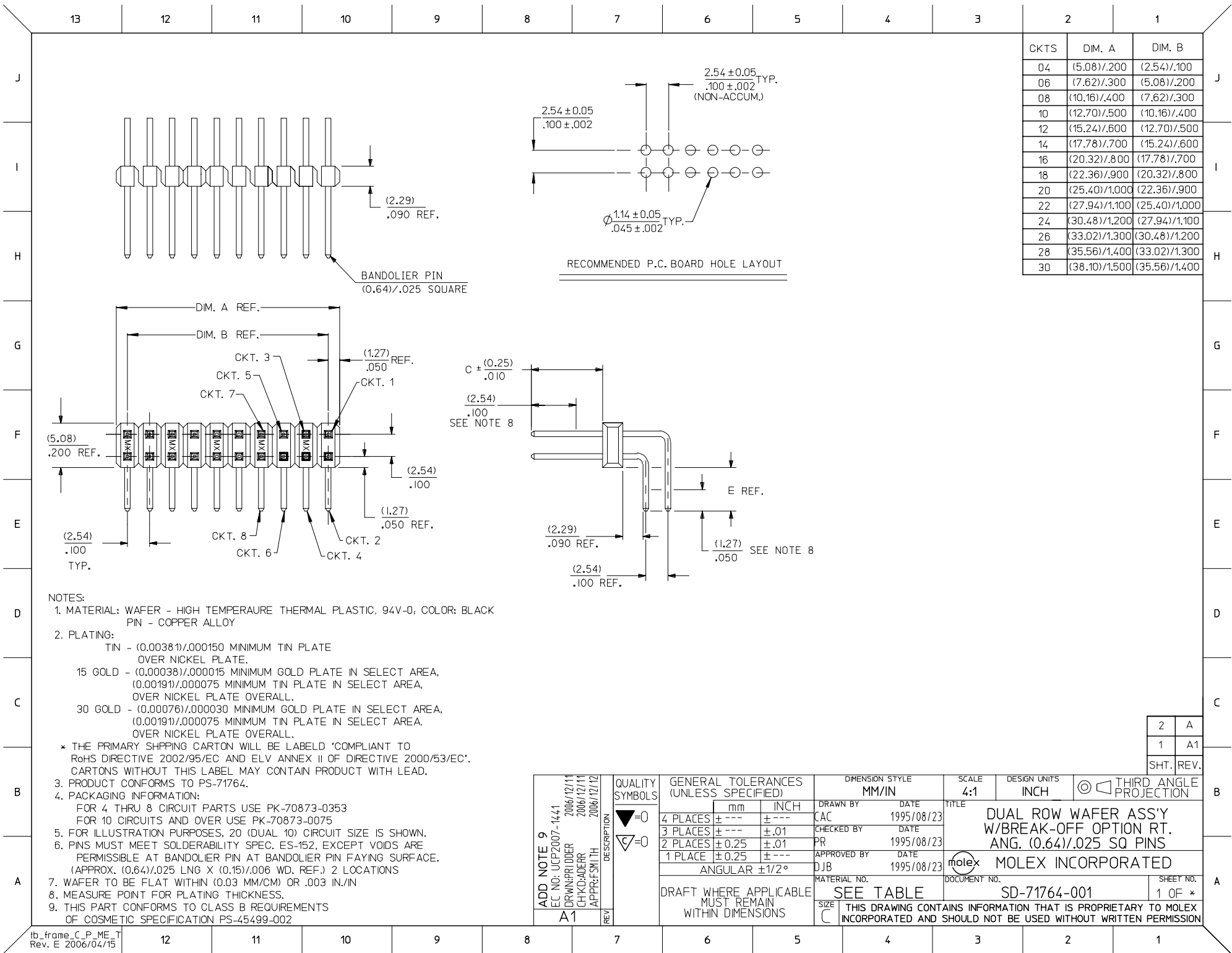
Sales Drawing

PS-71764

SD-71764-001

This document was generated on 03/31/2010

**PLEASE CHECK [WWW.MOLEX.COM](http://WWW.MOLEX.COM) FOR LATEST PART INFORMATION**



| CKTS | DIM. A        | DIM. B        |
|------|---------------|---------------|
| 04   | (5.08)/.200   | (2.54)/.100   |
| 06   | (7.62)/.300   | (5.08)/.200   |
| 08   | (10.16)/.400  | (7.62)/.300   |
| 10   | (12.70)/.500  | (10.16)/.400  |
| 12   | (15.24)/.600  | (12.70)/.500  |
| 14   | (17.78)/.700  | (15.24)/.600  |
| 16   | (20.32)/.800  | (17.78)/.700  |
| 18   | (22.86)/.900  | (20.32)/.800  |
| 20   | (25.40)/1.000 | (22.86)/.900  |
| 22   | (27.94)/1.100 | (25.40)/1.000 |
| 24   | (30.48)/1.200 | (27.94)/1.100 |
| 26   | (33.02)/1.300 | (30.48)/1.200 |
| 28   | (35.56)/1.400 | (33.02)/1.300 |
| 30   | (38.10)/1.500 | (35.56)/1.400 |

- NOTES:
- MATERIAL: WAFER - HIGH TEMPERATURE THERMAL PLASTIC, 94V-0; COLOR: BLACK  
PIN - COPPER ALLOY
  - PLATING:
    - TIN - (0.00381)/.000150 MINIMUM TIN PLATE OVER NICKEL PLATE.
    - 15 GOLD - (0.00038)/.000015 MINIMUM GOLD PLATE IN SELECT AREA. (0.00191)/.000075 MINIMUM TIN PLATE IN SELECT AREA, OVER NICKEL PLATE OVERALL.
    - 30 GOLD - (0.00076)/.000030 MINIMUM GOLD PLATE IN SELECT AREA. (0.00191)/.000075 MINIMUM TIN PLATE IN SELECT AREA, OVER NICKEL PLATE OVERALL.
  - \* THE PRIMARY SHIPPING CARTON WILL BE LABELD 'COMPLIANT TO RoHS DIRECTIVE 2002/95/EC AND ELV ANNEX II OF DIRECTIVE 2000/53/EC'. CARTONS WITHOUT THIS LABEL MAY CONTAIN PRODUCT WITH LEAD.
  - PRODUCT CONFORMS TO PS-71764.
  - PACKAGING INFORMATION:
    - FOR 4 THRU 8 CIRCUIT PARTS USE PK-70873-0353
    - FOR 10 CIRCUITS AND OVER USE PK-70873-0075
  - FOR ILLUSTRATION PURPOSES, 20 (DUAL 10) CIRCUIT SIZE IS SHOWN.
  - PINS MUST MEET SOLDERABILITY SPEC. ES-152, EXCEPT VOIDS ARE PERMISSIBLE AT BANDOLIER PIN AT BANDOLIER PIN FAYING SURFACE. (APPROX. (0.64)/.025 LNG X (0.15)/.006 WD. REF.) 2 LOCATIONS
  - WAFER TO BE FLAT WITHIN (0.03 MM/CM) OR .003 IN./IN
  - MEASURE POINT FOR PLATING THICKNESS.
  - THIS PART CONFORMS TO CLASS B REQUIREMENTS OF COSMETIC SPECIFICATION PS-45499-002

|   |                             |   |        |                 |                  |            |  |                        |  |
|---|-----------------------------|---|--------|-----------------|------------------|------------|--|------------------------|--|
| ADD NOTE 9<br>EC NO: UCP2007-1441<br>DRAWN/PR/DOR 2006/12/11<br>CHKD:ADERR 2006/12/11<br>APPR:FSM TH 2006/12/12 | QUALITY SYMBOLS<br>=0<br>=0 | GENERAL TOLERANCES (UNLESS SPECIFIED)   |        | DIMENSION STYLE |                  | SCALE      | DESIGN UNITS   | THIRD ANGLE PROJECTION |  |
|   |                             | mm  | INCH   | MM/IN           |                  | 4:1        | INCH   |                        |  |
| A1  |                             | 4 PLACES  | ± .01  | ± .01           | DRAWN BY         | DATE       | DUAL ROW WAFER ASS'Y<br>W/BREAK-OFF OPTION RT.<br>ANG. (0.64)/.025 SQ PINS<br><br>MATERIAL NO. SD-71764-001<br>DOCUMENT NO. MOLEX INCORPORATED |                        |  |
|   |                             | 3 PLACES  | ± .01  | ± .01           | CAC              | 1995/08/23 |  |                        |  |
|   |                             | 2 PLACES  | ± 0.25 | ± .01           | CHECKED BY       | DATE       |  |                        |  |
|   |                             | 1 PLACE   | ± 0.25 | ± .01           | PR               | 1995/08/23 |  |                        |  |
| ANGULAR ±1/2°   |                             | APPROVED BY   |        | DATE            | SHEET NO. 1 OF * |            |  |                        |  |
| DRAFT WHERE APPLICABLE MUST REMAIN WITHIN DIMENSIONS  |                             | DJB   |        | 1995/08/23      |                  |            |  |                        |  |
| SEE TABLE   |                             | THIS DRAWING CONTAINS INFORMATION THAT IS PROPRIETARY TO MOLEX INCORPORATED AND SHOULD NOT BE USED WITHOUT WRITTEN PERMISSION |        |                 |                  |            |  |                        |  |

| ITEM NO: 71764-0004/0030, 9003 |             |                    | ITEM NO: 71764-0104/0130, 9001, 9004 |             |                    | ITEM NO: 71764-0204/0230, 9000, 9002 |             |                    |
|--------------------------------|-------------|--------------------|--------------------------------------|-------------|--------------------|--------------------------------------|-------------|--------------------|
| DIM. C                         |             | (6.10)/.240        | DIM. C                               |             | (6.10)/.240        | DIM. C                               |             | (6.10)/.240        |
| DIM. E (REF.)                  |             | (2.79)/.110        | DIM. E (REF.)                        |             | (2.79)/.110        | DIM. E (REF.)                        |             | (2.79)/.110        |
| FINISH                         |             | TIN                | FINISH                               |             | 15 GOLD            | PLATING FINISH                       |             | 30 GOLD            |
| CONNECTOR END PLATING          |             | TIN                | CONNECTOR END PLATING                |             | GOLD               | CONNECTOR END PLATING                |             | GOLD               |
| P.C. BOARD END PLATING         |             | TIN                | P.C. BOARD END PLATING               |             | TIN                | P.C. BOARD END PLATING               |             | TIN                |
| PACKAGING                      |             | SEE NOTE 4 SHEET 1 | PACKAGING                            |             | SEE NOTE 4 SHEET 1 | PACKAGING                            |             | SEE NOTE 4 SHEET 1 |
| CKTS                           | ITEM NUMBER | VOIDS              | CKTS                                 | ITEM NUMBER | VOIDS              | CKTS                                 | ITEM NUMBER | VOIDS              |
| 04                             | 71764-0004  |                    | 04                                   | 71764-0104  |                    | 04                                   | 71764-0204  |                    |
| 06                             | 71764-0006  |                    | 06                                   | 71764-0106  |                    | 06                                   | 71764-0206  |                    |
| 08                             | 71764-0008  |                    | 08                                   | 71764-0108  |                    | 08                                   | 71764-0208  |                    |
| 10                             | 71764-0010  |                    | 10                                   | 71764-0110  |                    | 10                                   | 71764-0210  |                    |
| 12                             | 71764-0012  |                    | 12                                   | 71764-0112  |                    | 12                                   | 71764-0212  |                    |
| 14                             | 71764-0014  |                    | 14                                   | 71764-0114  |                    | 14                                   | 71764-0214  |                    |
| 16                             | 71764-0016  |                    | 16                                   | 71764-0116  |                    | 16                                   | 71764-0216  |                    |
| 18                             | 71764-0018  |                    | 18                                   | 71764-0118  |                    | 18                                   | 71764-0218  |                    |
| 20                             | 71764-0020  |                    | 20                                   | 71764-0120  |                    | 20                                   | 71764-0220  |                    |
| 22                             | 71764-0022  |                    | 22                                   | 71764-0122  |                    | 22                                   | 71764-0222  |                    |
| 24                             | 71764-0024  |                    | 24                                   | 71764-0124  |                    | 24                                   | 71764-0224  |                    |
| 26                             | 71764-0026  |                    | 26                                   | 71764-0126  |                    | 26                                   | 71764-0226  |                    |
| 28                             | 71764-0028  |                    | 28                                   | 71764-0128  |                    | 28                                   | 71764-0228  |                    |
| 30                             | 71764-0030  |                    | 30                                   | 71764-0130  |                    | 30                                   | 71764-0230  |                    |
| 06                             | 71764-9003  | 3                  | 06                                   | 71764-9001  | 3, 4               | 06                                   | 71764-9002  | 3, 4               |
|                                |             |                    | 08                                   | 71764-9004  | 5, 6               |                                      |             |                    |
|                                |             |                    |                                      |             |                    | 10                                   | 71764-9000  | 8                  |

|                     |      |                            |              |   |              |
|---------------------|------|----------------------------|--------------|---|--------------|
| <b>A</b>            | REV: | ECR/ECN INFORMATION        | TITLE:       | DUAL ROW WAFER ASS'Y<br>W/ BREAK-OFF OPTION RT.<br>ANG. (0.64)/.025 SQ PINS | SHEET No.    |
|                     |      | EC No: <b>UCP2007-0449</b> |              |   | <b>- 2 -</b> |
|                     |      | DATE: <b>2006-08-18</b>    |              |   |              |
| DOCUMENT NUMBER:    |      | CREATED / REVISED BY:      | CHECKED BY:  | APPROVED BY:  |              |
| <b>SD-71764-001</b> |      | <b>PRIDDER</b>             | <b>ADERR</b> | <b>FSMITH</b>   |              |

