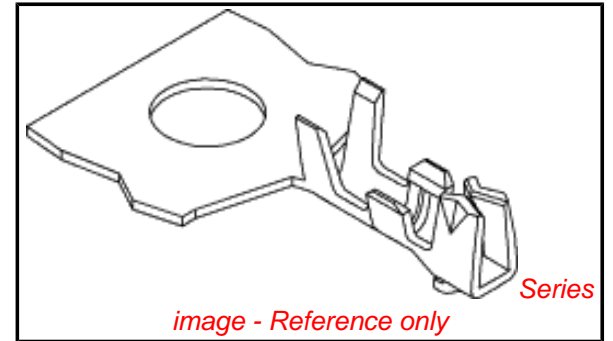


PLEASE CHECK WWW.MOLEX.COM FOR LATEST PART INFORMATION

Part Number: **0500588100**
Status: **Active**
Overview: picoblade
Description: 1.25mm (.049") Pitch PicoBlade™ Crimp Terminal, Female, 28-32 AWG, Bag

Documents:

3D Model	Product Specification PS-51021-022 (PDF)
Drawing (PDF)	Product Specification PS-51021-023 (PDF)
Product Specification PS-51021-001 (PDF)	Product Specification PS-51021-026 (PDF)
Product Specification PS-51021-002 (PDF)	Product Specification PS-51021-027 (PDF)
Product Specification PS-51021-009 (PDF)	Product Specification PS-51021-028 (PDF)
Product Specification PS-51021-010 (PDF)	RoHS Certificate of Compliance (PDF)
Product Specification PS-51021-011 (PDF)	



General

Product Family	Crimp Terminals
Series	<u>50058</u>
Crimp Quality Equipment	Yes
Overview	<u>picoblade</u>
Product Name	PicoBlade™

Physical

Gender	Female
Material - Metal	Phosphor Bronze
Material - Plating Mating	Tin
Material - Plating Termination	Tin
Packaging Type	Bag
Plating min: Mating (µin)	36
Plating min: Mating (µm)	0.90
Plating min: Termination (µin)	36
Plating min: Termination (µm)	0.90
Termination Interface: Style	Crimp or Compression
Wire Insulation Diameter	0.50-1.00mm (.020-.039")
Wire Size AWG	28, 30, 32
Wire Size mm²	N/A

Material Info

Reference - Drawing Numbers

Packaging Specification	SPK-50058-001
Product Specification	PS-51021-001, PS-51021-002, PS-51021-009, PS-51021-010, PS-51021-011, PS-51021-022, PS-51021-023, PS-51021-026, PS-51021-027, PS-51021-028, RPS-501576-001, RPS-51021-001, RPS-51021-002, RPS-51021-003, RPS-51021-004, RPS-51021-006, RPS-51021-007, RPS-51021-008, RPS-51021-009, RPS-51021-010, RPS-51021-011, RPS-51021-013, RPS-51021-014, RPS-51021-015, RPS-51021-016, RPS-51021-017, RPS-51021-018, RPS-51021-019, RPS-51021-020, RPS-51021-021, RPS-51021-022, RPS-51021-023, RPS-51021-024, RPS-51021-025, RPS-51021-026, RPS-51021-027, RPS-51021-028, RPS-51021-029, RPS-51021-030, RPS-51021-031, RPS-51021-032, RPS-51021-033, RPS-51021-037, RPS-51021-038, RPS-51021-039, RPS-51021-040, RPS-51021-041, RPS-51021-042,

EU RoHS

**ELV and RoHS
Compliant**
**REACH SVHC
Contains SVHC: No**
**Halogen-Free
Status**

China RoHS



**Need more information on product
environmental compliance?**

Email productcompliance@molex.com
For a multiple part number RoHS Certificate of
Compliance, [click here](#)

Please visit the [Contact Us](#) section for any
non-product compliance questions.

Search Parts in this Series

50058Series

Mates With

50125 Crimp Terminal 26-28 AWG, 50133
Crimp Terminal 28-32 AWG

Use With

51021 Housing

Application Tooling | FAQ

*Tooling specifications and manuals are
found by selecting the products below.
Crimp Height Specifications are then
contained in the Application Tooling
Specification document.*

Global

Description	Product #
Hand Crimp Tool for 1.25mm (.049") Pitch PicoBlade™ Crimp Terminals, 26-32 AWG	<u>0638190300</u>
Hand Crimp Tool for 1.25mm (.049") Pitch	<u>0638190400</u>

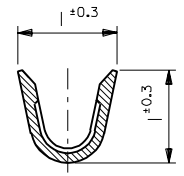
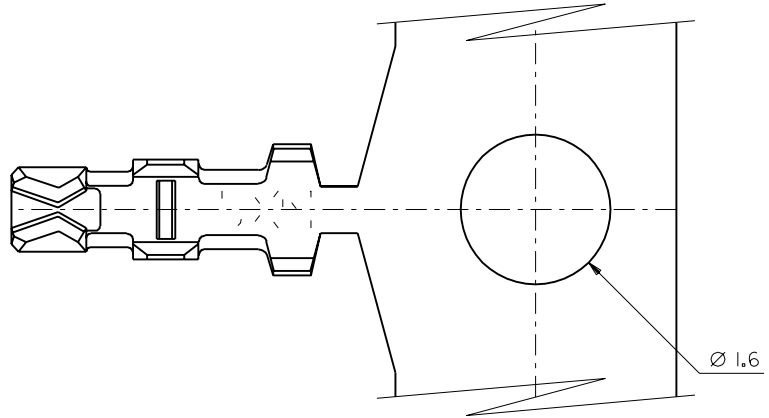
RPS-51021-043, RPS-51021-044, RPS-51021-045,
RPS-51021-046, RPS-51021-047, RPS-51021-048,
RPS-51021-050, RPS-51021-051, RPS-51021-052,
RPS-51021-053, RPS-51021-054, RPS-51021-055,
RPS-51021-056, RPS-51021-057, RPS-51021-058,
RPS-51021-059, RPS-51021-060, RPS-51021-061,
RPS-51021-062, RPS-51021-063, RPS-51021-064,
RPS-51021-065, RPS-51021-066, RPS-51021-067,
RPS-51021-068, RPS-51021-071, RPS-51021-072,
RPS-51021-073, RPS-51021-074, RPS-51021-076,
RPS-51021-077, RPS-51021-078, RPS-51021-079,
RPS-51021-081, RPS-51021-083, RPS-51021-084,
RPS-51021-085, RPS-51021-086, RPS-51021-089,
RPS-51021-091, RPS-51021-092, RPS-51021-096,
RPS-51021-097, RPS-51021-101, RPS-53398-002,
RPS-53398-037, RPS-53398-038
SD-50058-8*00

Sales Drawing

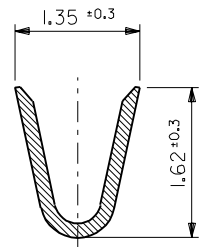
PicoBlade™ Crimp Terminals, 26-32 AWG	
Extraction Tool	<u>0011030043</u>
Japan	
Description	Product #
Hand Crimp Tool	<u>0570685000</u>
Extraction Tool	<u>0570726000</u>

This document was generated on 05/19/2010

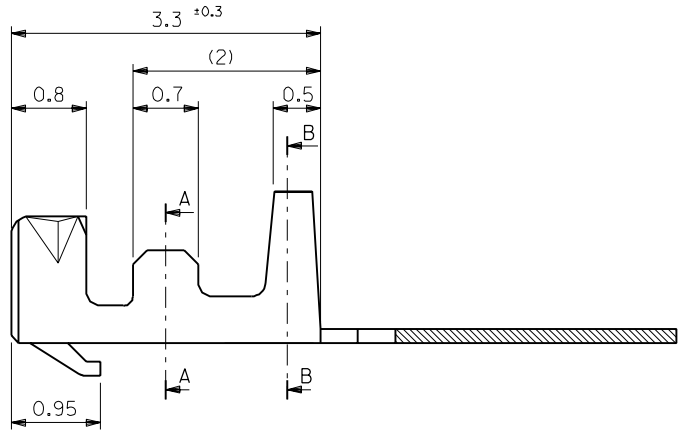
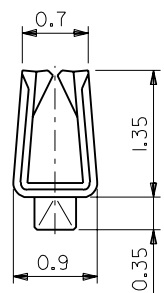
PLEASE CHECK WWW.MOLEX.COM FOR LATEST PART INFORMATION



SECT. A-A



SECT. B-B



50058-8100	バラ状 LOOSE
50058-8000	連鎖状 CHAIN
ENG. NO.	端子形状 FORM

注記
NOTES

- 適合ハウジング：51021シリーズ
APPLICABLE HOUSING：51021 SERIES
- メッキ仕様 PLATING
錫 0.9μm MIN. リフロー処理（前メッキ）
TIN 0.9μm MIN. REFLOW TREATMENT (PRE-PLATED)

材料 MATERIAL リン青銅 PHOSPHOR BRONZE (t=0.15)		仕上げ FINISH —H—	
適用電線範囲 WIRE RANGE AWG #28-32		被覆外径 INS. RANGE Ø 0.5-1.0	
DRAWN BY '92/10/21 H.HIRAMOTO		CHK'D BY '93/9/6 M.FUKUSHIMA	
APP'D BY '93/9/6 M.FUKUSHIMA		尺度 SCALE 20 - 1	
角度 ANGLE	±3°	記号 LTR	変更内容 REVISION RECORD
30以上 OVER	+0.3	D	変更 (J30883) REVISED (H.H M.F '93/9/3)
10以上 30未満 OVER UNDER	+0.25	C	変更&再作図 REVISED & REDRAWN (J20810) (H.H M.F '92/10/27)
10未満 UNDER	+0.2		
一般公差 GENERAL TOLERANCES		DR. CHK.	日付 DATE

molex MOLEX-JAPAN CO.,LTD. 日本モレックス株式会社	
REVISE ONLY ON CAD SYSTEM	
TITLE 名称 1.25 WIRE TO BOARD CONN. CRIMP REC. TERMINAL	
DWG. NO.	REV
SD-50058-8*00	D