

PLEASE CHECK WWW.MOLEX.COM FOR LATEST PART INFORMATION

Part Number: [0040062005](#)
Status: **Active**
Description: Panel Grounding Clip Crimp Terminal 42172, 16-18 AWG, 301 Stainless Steel, 1.27mm (.050") Panel Thickness

Documents:

[3D Model](#) [RoHS Certificate of Compliance \(PDF\)](#)
[Drawing \(PDF\)](#)

Agency Certification

CSA LR19980
 UL E126412

General

Product Family Crimp Terminals
 Series [42172](#)
 Comments (2) 18 AWG, or (1) 18 and (1) 16 AWG
 Crimp Quality Equipment Yes
 Product Name Panel Grounding Clip

Physical

Gender Female
 Material - Metal Stainless Steel
 Material - Plating Mating Unplated
 Packaging Type Reel
 Termination Interface: Style Crimp or Compression
 Wire Insulation Diameter 3.00mm (.118") max
 Wire Size AWG 16, 18
 Wire Size mm² N/A

Material Info

Old Part Number 42172B1

Reference - Drawing Numbers

Sales Drawing SD-42172-**

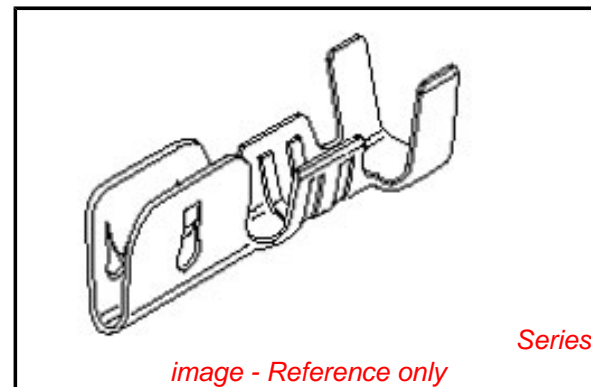


image - Reference only

EU RoHS

ELV and RoHS Compliant
REACH SVHC Contains SVHC: No
Halogen-Free Status

China RoHS



Need more information on product environmental compliance?

Email productcompliance@molex.com
 For a multiple part number RoHS Certificate of Compliance, [click here](#)

Please visit the [Contact Us](#) section for any non-product compliance questions.

Search Parts in this Series

[42172Series](#)

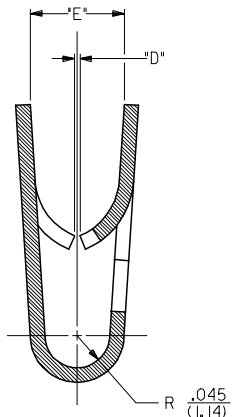
Application Tooling | [FAQ](#)

Tooling specifications and manuals are found by selecting the products below. Crimp Height Specifications are then contained in the Application Tooling Specification document.

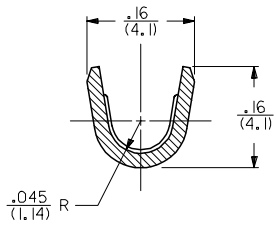
Global

| Description | Product # |
|----------------------|----------------------------|
| Mini-Mac™ Applicator | 0638913000 |

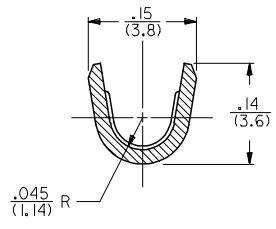
13 12 11 10 9 8 7 6 5 4 3 2 1



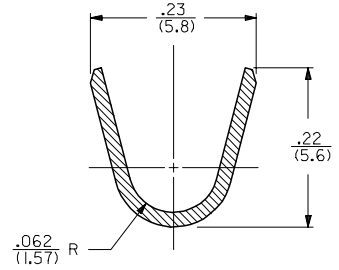
SECTION A-A
SCALE 8:1



SECTION B-B
SCALE 8:1
14 AWG WIRE



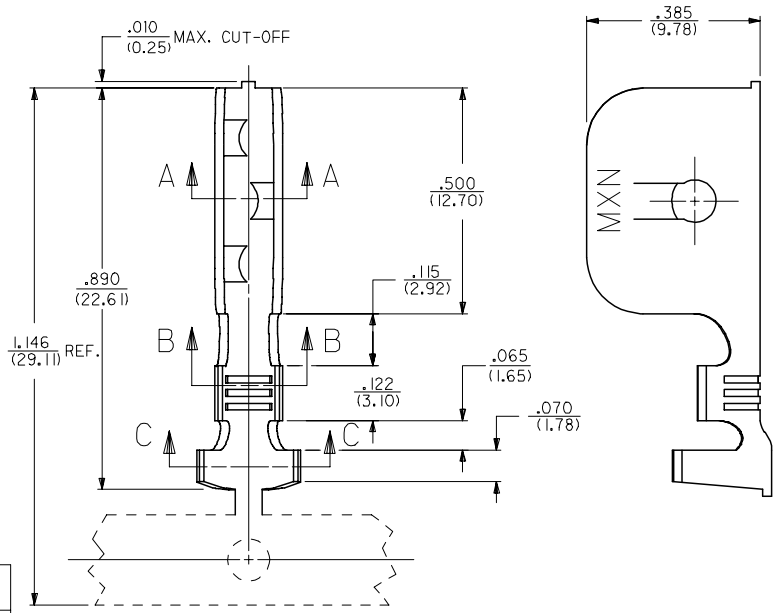
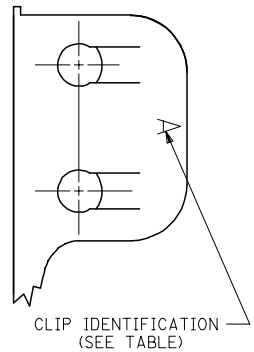
SECTION B-B
SCALE 8:1
18-16 AWG WIRE



SECTION C-C
SCALE 8:1

NOTES:
1. THIS GROUND CLIP CRIMPS TO #14- #18 AWG WIRE WITH .031(.79) THICK INSULATION, SEE CHART, AND IS INTENDED FOR USE ONLY AS A SECONDARY GROUND.

MATERIAL:
STEEL, STAINLESS, TYPE 301,
.020(.51) THICK.



| PART NO. | ENG. NO. | DIM. "D" | DIM. "E" | PANEL THICKNESS RANGE | WIRE GAGE | DOUBLE WIRE COMBINATION |
|-------------|-----------|-------------|-----------|-------------------------|-----------|-------------------------|
| 040-06-2015 | 42172-BB1 | .025/(0.64) | .13/(3.3) | .035/(0.89)-.050/(1.27) | 14 AWG | (2) #16 AWG |
| 040-06-2014 | 42172-AA1 | .008/(0.20) | .11/(2.8) | .015/(0.38)-.035/(0.89) | 14 AWG | |
| 050-29-1597 | 42172-H1 | .035/(0.89) | .13/(3.3) | .045/(1.14)-.060/(1.52) | 18-16 AWG | |
| 040-06-2017 | 42172-F1 | .015/(0.38) | .11/(2.8) | .020/(0.51)-.030/(0.76) | 18-16 AWG | (2) #18 AWG OR |
| 040-06-2013 | 42172-C1 | .050/(1.27) | .13/(3.3) | .060/(1.52)-.075/(1.91) | 18-16 AWG | (1) #18 & (1) #16 |
| 040-06-2005 | 42172-B1 | .025/(0.64) | .13/(3.3) | .035/(0.89)-.050/(1.27) | 18-16 AWG | |
| 040-06-2003 | 42172-A1 | .008/(0.20) | .11/(2.8) | .015/(0.38)-.035/(0.89) | 18-16 AWG | |
| 040-06-2024 | 42172-G1 | .004/(0.10) | .11/(2.8) | .015/(0.38)-.035/(0.89) | 18-16 AWG | |

REM GEOM OUTSIDE DWG
FC NO: DRAWN: C STEWART 2005/11/22
CHKD: APPR:
R1

QUALITY SYMBOLS
=0
=0

GENERAL TOLERANCES (UNLESS SPECIFIED)
4 PLACES ± .005 ± .005
3 PLACES ± .010 ± .010
2 PLACES ± 0.25 ± .014
1 PLACE ± 0.35 ± .014
ANGULAR ±1/2°

DRAFT WHERE APPLICABLE MUST REMAIN WITHIN DIMENSIONS

DIMENSION STYLE IN/MM
DRAWN BY DATE
MAB 07-24-92
CHECKED BY DATE
KBP 07-24-92
APPROVED BY DATE
RAS 07-24-92
MATERIAL NO.
DOCUMENT NO.
SD-42172-**

SCALE 5:1
DESIGN UNITS INCH
THIRD ANGLE PROJECTION
GROUND CLIP
MOLEX INCORPORATED
SHEET NO. 1 OF 1
THIS DRAWING CONTAINS INFORMATION THAT IS PROPRIETARY TO MOLEX INCORPORATED AND SHOULD NOT BE USED WITHOUT WRITTEN PERMISSION

ib_frame_C_P_ME_T 12 11 10 9 8 7 6 5 4 3 2 1
Rev. D 2004/04/02