



Model No.	OSPRO2X2- XXXAS1C1A
REV.	C1

## 850nm & 940nm Infrared SMD LED Ring

### Specifications :

- Diameter(outer): 42.1mm
- Height: 3.5mm
- LEDs: 24pcs
- Total Watts: 0.3W
- Volts: 6Volts DC
- Lifetime: 20,000hrs

### Features :

- IR Wavelength 850nm or 940nm
- Color White Type
- Superior UV Resistance
- 0 Lux with IR LED ON. Adopt high Radiant Power IR LED, having very good night-vision effect

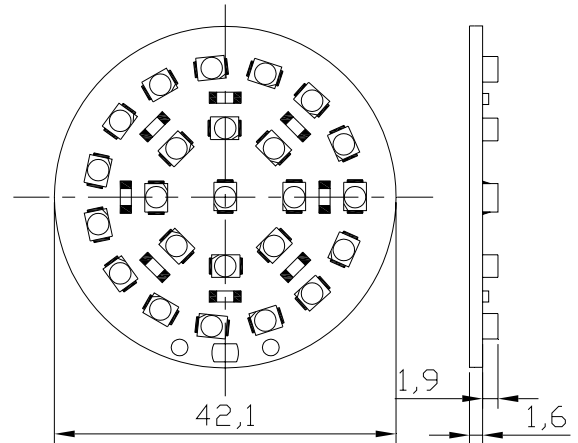
### Application :

- Pickup device
- CCTV camera, IR camera
- Monitoring devices. Remote controlling

Model No.	OSPRO2X2-XXXAS1C1A
REV.	C1

**Product Picture and Dimensions:**

Unit: mm  
Tolerance:  $\pm 0.3\text{mm}$


**Device Selection Guide**

Module No.	LED	Wavelength (Typ.)	LED Module Beam Angle	Pattern
OSPRO2X2-I3CAS1C1A	OSI3CAS1C1A	850nm	120 degree	
OSPRO2X2-I5LAS1C1A	OSI5LAS1C1A	940nm	120 degree	



Model No.	OSPRO2X2-XXXAS1C1A
REV.	C1

### Absolute Maximum Ratings(Ta=25 )

Items	Symbol	Values	Units
Operating Supply Range(DC)	V <sub>idc</sub>	7	V
Input Current (DC)	I <sub>i</sub>	0.5	A
Power Dissipation	P <sub>a</sub>	3.5	W
Operating Temperature	T <sub>ope</sub>	-10 ~ +60	DegC
Storage Temperature	T <sub>stg</sub>	-20 ~ +50	DegC

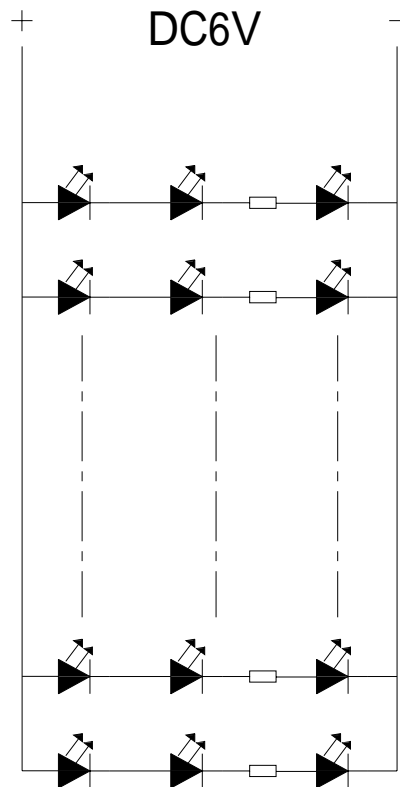
### Typical Performance (Ta=25 )

Items	Symbol	Min.	Typ.	Max.	Units
LED Module Power	P <sub>m</sub>	-	2.4	3.5	w
Input Voltage(DC)	V <sub>i</sub>	-	6	7	V
Product input Current	I <sub>f</sub>	-	0.4	0.5	mA
LED Quantity	QTY	-	24	-	PCS
Total Diameter of PCB	L <sub>mod.</sub>	-	42.1	-	mm
Net Weight	Wei.	---	5	---	g



Model No.	OSPRO2X2- XXLAS1C1A
REV.	C1

## Product Circuit:



## CAUTION:

- To prevent electric shocks and risk of fire hazards, do NOT use other than specified power source.
- The power supply must through safe attestation. Its output Voltage/current/voltage polarity and operating temperature must match the requirement.
- Please note the IR module's operating temperature and its using environment requirement. Avoid using at too high or too low temperatures.