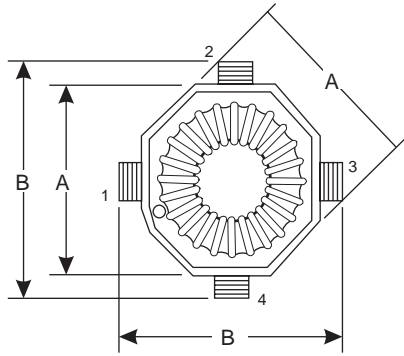


XFMSD3 SERIES INDUCTORS

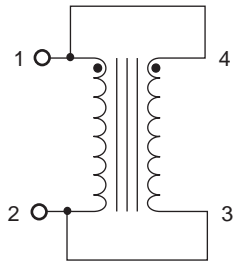
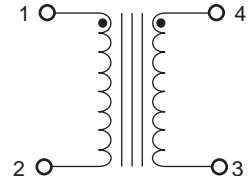
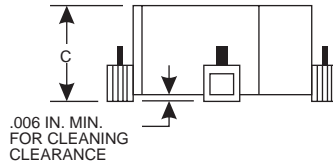
- TRUE SURFACE MOUNT DESIGN
- ECONOMICAL, LOW COST SOLUTION TO YOUR POWER REQUIREMENTS
- CUSTOM VERSIONS AVAILABLE AT NO EXTRA COST
- TAPE AND REEL PACKAGING AVAILABLE
- LOW LOSS MPP CORE OR POWDERED IRON VERSIONS, BOTH STANDARD
- VERSATILE DUAL WINDING DESIGN, USE AS HIGH CURRENT CHOKE OR ONE (1) TO ONE (1) TRANSFORMER
- CONSTANT INDUCTANCE UP TO 1.0 MHz

PART NUMBER	PARALLEL RATINGS			SERIES RATINGS			A	B	C MAX
	INDUCTANCE μH	CURRENT ADC	DCR OHMS	INDUCTANCE μH	CURRENT ADC	DCR OHMS			
6XF4709-S3	.42	6.50	.005	1.69	3.25	.019	.350	.460	.235
6XF6809-S3	.75	5.50	.006	3.01	2.75	.024			
6XF0016-S3	1.18	4.60	.008	4.70	2.30	.029			
6XF0026-S3	2.30	4.50	.010	9.21	2.25	.038			
6XF0056-S3	4.70	3.00	.021	18.80	1.50	.084			
6XF0086-S3	7.94	2.60	.027	31.77	1.30	.108			
6XF0106-S3	10.58	2.50	.032	42.30	1.25	.125			
6XF0156-S3	15.23	1.70	.059	60.91	.85	.237			
6XF0206-S3	20.73	1.30	.107	82.91	.65	.427			
6XF0256-S3	24.86	1.00	.117	99.45	.50	.466			
6XF0336-S3	31.77	1.40	.106	127.09	.70	.421			
6XF0506-S3	51.18	.92	.210	204.73	.46	.839			
6XF0686-S3	67.87	.78	.304	271.47	.39	1.214			
6XF1006-S3	99.45	.63	.458	397.81	.32	1.829			
6XF1506-S3	147.39	.43	.561	589.57	.22	2.242			
6XF2006-S3	198.58	.39	.796	794.30	.20	3.184			
6XF3006-S3	300.80	.38	1.233	1203.20	.19	4.929			
7XF4709-S3	.44	7.00	.004	1.76	3.50	.016	.450	.550	.275
7XF6809-S3	.78	6.00	.005	3.14	3.00	.020			
7XF0016-S3	1.23	5.00	.006	4.90	2.50	.024			
7XF0026-S3	1.76	5.90	.007	7.06	2.95	.028			
7XF0056-S3	4.90	4.40	.014	19.60	2.20	.056			
7XF0086-S3	8.28	3.50	.019	33.12	1.75	.073			
7XF0106-S3	9.60	3.40	.020	38.42	1.70	.079			
7XF0156-S3	14.16	3.00	.024	56.64	1.50	.096			
7XF0206-S3	19.60	2.10	.055	78.40	1.05	.220			
7XF0256-S3	25.92	2.00	.064	103.68	1.00	.254			
7XF0336-S3	33.12	1.80	.072	132.50	.90	.288			
7XF0506-S3	50.18	1.50	.111	200.70	.75	.444			
7XF0686-S3	67.08	1.20	.158	268.32	.60	.630			
7XF1006-S3	99.23	.92	.303	396.90	.46	1.210			
7XF1506-S3	148.23	.82	.372	592.90	.41	1.488			
7XF2006-S3	200.70	.64	.545	802.82	.32	2.180			
7XF3006-S3	298.12	.62	.672	1192.46	.31	2.687			

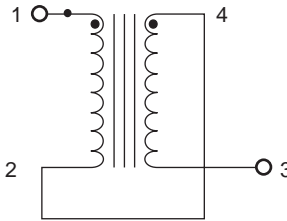
XFSMD3 SERIES INDUCTORS MECHANICAL DIMENSIONS



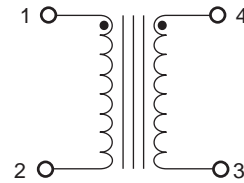
BOTTOM VIEW



PARALLEL

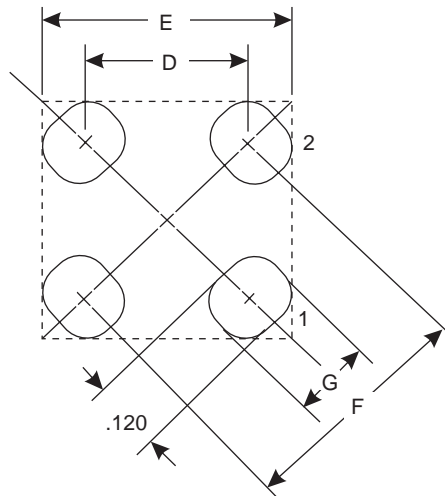


SERIES



TRANSFORMER

CASE SIZE	LAYOUT DIMENSIONS			
	D	E	F	G
6XF	.280	.425	.400	.145
7XF	.350	.490	.500	.160



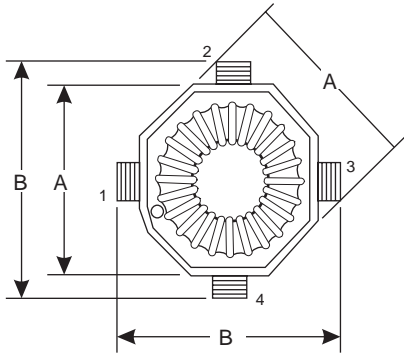
RECOMMENDED LAYOUT PATTERN
(TOP VIEW)

XFMSD3 SERIES INDUCTORS

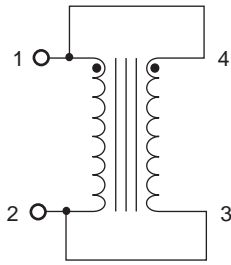
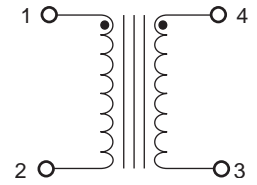
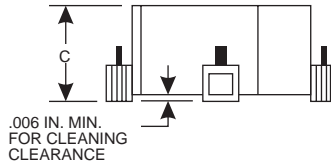
- TRUE SURFACE MOUNT DESIGN
- ECONOMICAL, LOW COST SOLUTION TO YOUR POWER REQUIREMENTS
- CUSTOM VERSIONS AVAILABLE AT NO EXTRA COST
- TAPE AND REEL PACKAGING AVAILABLE
- LOW LOSS MPP CORE OR POWDERED IRON VERSIONS, BOTH STANDARD
- VERSATILE DUAL WINDING DESIGN, USE AS HIGH CURRENT CHOKE OR ONE (1) TO ONE (1) TRANSFORMER
- CONSTANT INDUCTANCE UP TO 1.0 MHz

PART NUMBER	PARALLEL RATINGS			SERIES RATINGS			A	B	C MAX
	INDUCTANCE μH	CURRENT ADC	DCR OHMS	INDUCTANCE μH	CURRENT ADC	DCR OHMS			
XF0106-S3	10	2.00	0.38	40	1.00	0.150	0.530	0.700	0.290
XF0506-S3	50	0.750	0.300	200	0.366	1.20	0.530	0.700	0.290
XF1006-S3	100	0.500	0.375	400	0.250	1.50	0.530	0.700	0.290
1XF0106-S3	10	2.500	0.040	40	1.250	0.160	0.530	0.700	0.290
1XF0506-S3	50	1.020	0.180	200	0.510	0.720	0.530	0.700	0.290
1XF1006-S3	100	0.730	0.375	400	0.365	1.500	0.530	0.700	0.290
2XF0106-S3	10	3.000	0.038	40	1.500	0.150	0.630	0.825	0.310
2XF0506-S3	50	0.950	0.350	200	0.475	1.400	0.630	0.825	0.310
2XF1006-S3	100	0.670	0.375	400	0.335	1.500	0.630	0.825	0.310
5XF0506-S3	50	1.350	0.090	200	0.675	0.360	0.630	0.825	0.310
5XF1006-S3	100	0.950	0.175	400	0.475	0.700	0.630	0.825	0.310

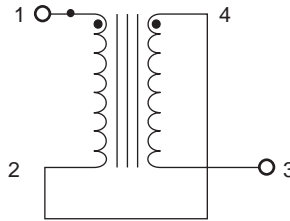
XFSD3 SERIES INDUCTORS MECHANICAL DIMENSIONS



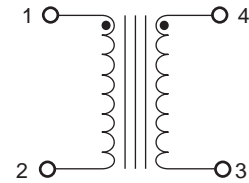
BOTTOM VIEW



PARALLEL

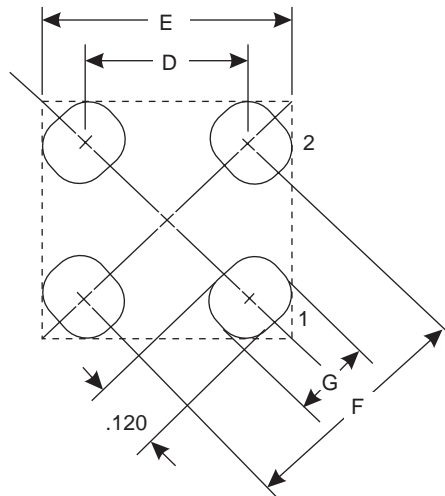


SERIES



TRANSFORMER

CASE SIZE	LAYOUT DIMENSIONS			
	D	E	F	G
XF	.400	.470	.570	.145
1XF	.400	.470	.570	.145
2XF	.495	.570	.700	.160
3XF	.495	.570	.700	.160



RECOMMENDED LAYOUT PATTERN
(TOP VIEW)