

Customer Information Sheet

DRAWING No.: S1761-XXR

SHEET 2 OF 2

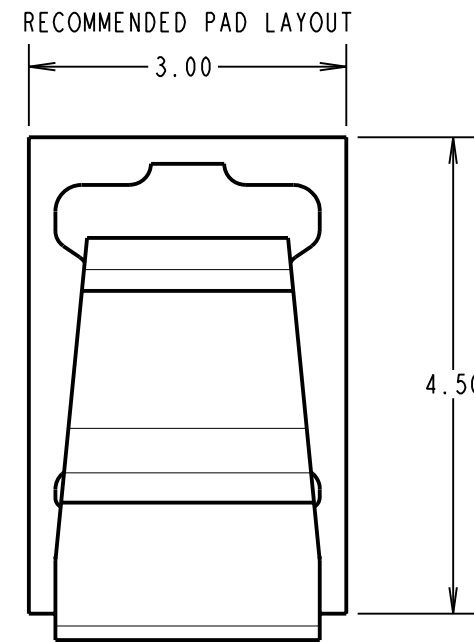
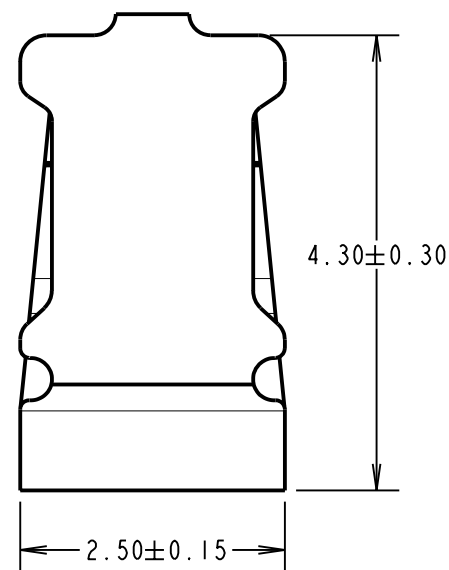
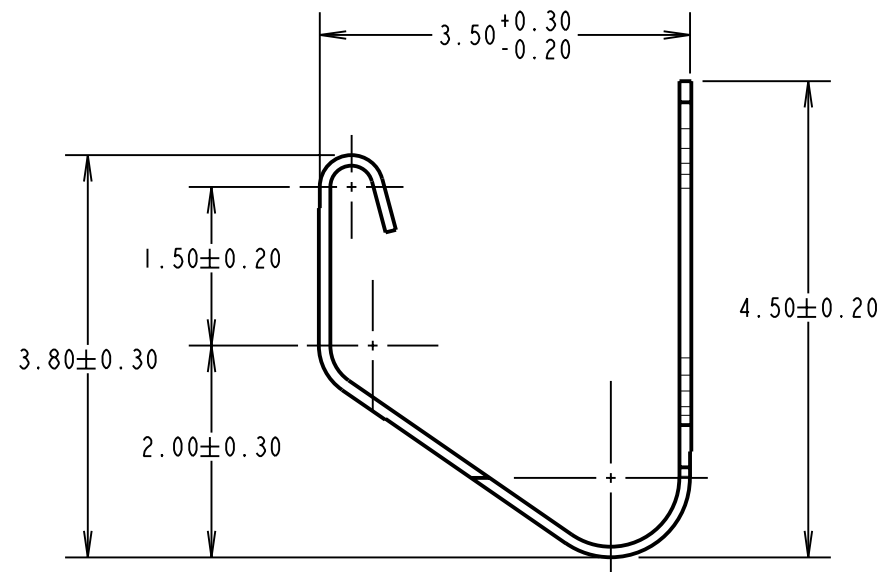
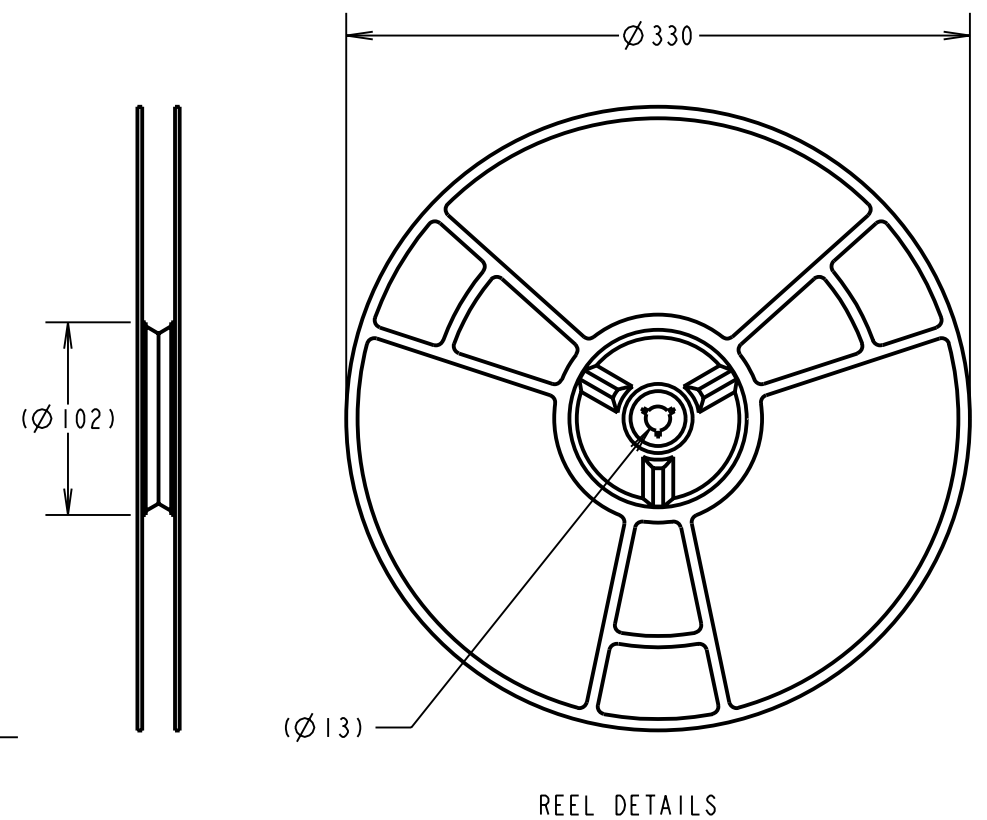
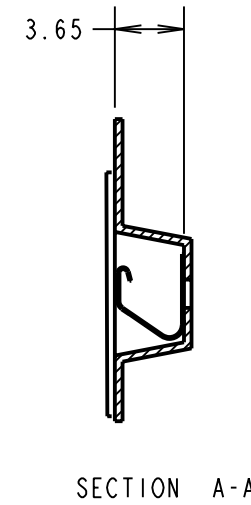
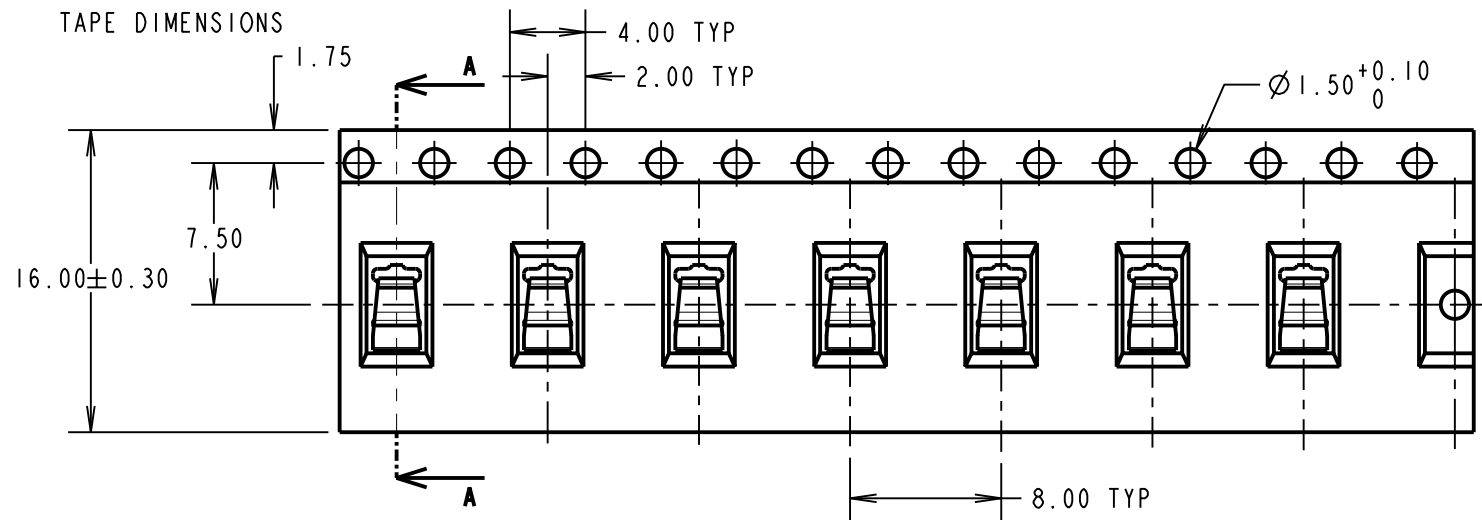
IF IN DOUBT - ASK

©

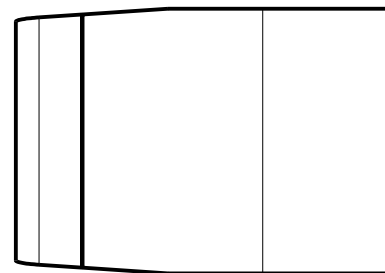
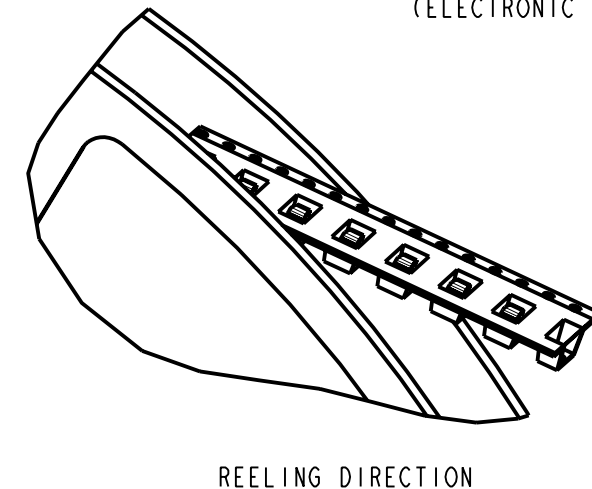
NOT TO SCALE

THIRD ANGLE PROJECTION

ALL DIMENSIONS IN mm



- NOTES:
1. QUANTITY PER REEL = 2000
 2. THIS PRODUCT IS TAPED AND REELED IN ACCORDANCE WITH EIA-481 (ELECTRONIC INDUSTRIES ASSOCIATION)



ORDER CODE: **S1761-XXR**

FINISH _____
 42 = GOLD FLASH ON CONTACT AREA,
 2.5µ 100% TIN ON FOOT AREA,
 0.76-1.27µ ALL OVER NICKEL
 46 = 0.76-1.27µ 100% TIN OVER NICKEL

COMPONENT SPECIFICATION:
 MATERIAL = TITANIUM COPPER
 RECOMMENDED WORKING HEIGHT = 2.50mm / MIN FORCE = 1.5N
 MINIMUM WORKING HEIGHT = 1.75mm / MAX FORCE = 8.5N
 MAXIMUM PERMANENT SET = 0.20mm

HARWIN

HARWIN USA TEL: 603 893 5376 FAX: 603 893 5396 mis@harwin.com	HARWIN Europe (UK) TEL: 023 9231 4545 FAX: 023 9231 4590 mis@harwin.co.uk	HARWIN Asia TEL: +65 6 779 4909 FAX: +65 6 779 3868 mis@harwin.com.sg
--	--	--

THIS DRAWING AND ANY INFORMATION OR DESCRIPTIVE MATTER SET OUT HEREON ARE CONFIDENTIAL AND COPYRIGHT PROPERTY OF THE HARWIN GROUP AND MUST NOT BE DISCLOSED, LOANED, COPIED OR USED FOR MANUFACTURING, TENDERING OR FOR ANY OTHER PURPOSE WITHOUT THEIR WRITTEN PERMISSION.

TOLERANCES
 X. = ±1mm
 X.X = ±0.25mm
 X.XX = ±0.10mm
 X.XXX = ±0.01mm
 ANGLES = ±5°
 UNLESS STATED

MATERIAL:
 SEE ABOVE
 FINISH: SEE ABOVE
 S/AREA: mm²

TITLE:
S1761-XX EMI SHIELD FINGER IN TAPE AND REEL
 DRAWING NUMBER:
S1761-XXR
 SHT 2 OF 2

SM	5	08.06.10	10822
NAME	ISS.	DATE	C/NOTE
APPROVED: S. MCCULLAGH			
CHECKED: R. ADDE			
DRAWN: N. CODLING			
CUSTOMER REF.:			
ASSEMBLY DRG:			