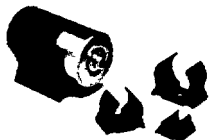
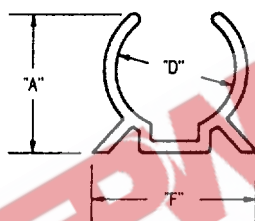
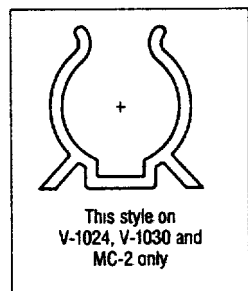
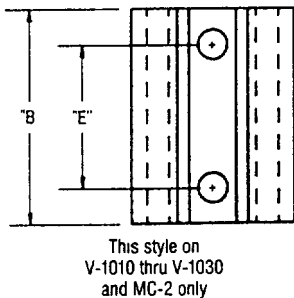
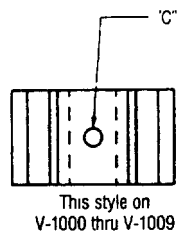


COMPONENT CLIPS & MICROPHONE CLIP (V & MC)

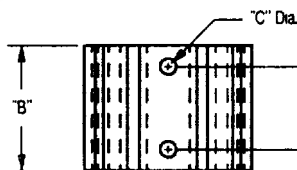
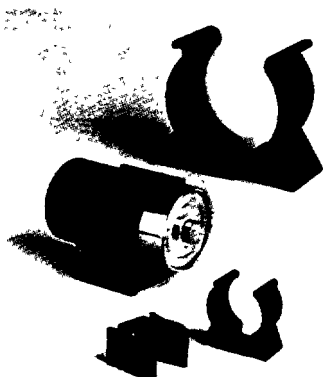


- Easy and economical
- Hold capacitors, resistors, lamps, batteries and fuses
- Mount securely with screws or plastic rivets
- Custom lengths available by special order
- V-series material: PVC, RMS-04
- Colour: Black
- MC-2 Material: Polypropylene, RMS-08
- Standard Pack: up to size 1007, 1000 per bag; sizes 1008 thru 1030, 100 per bag; M-2, 100 per bag

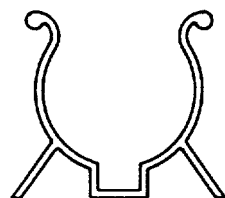
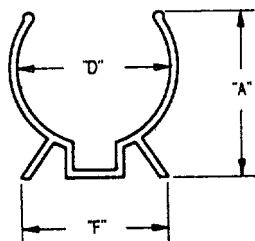


Part #	Dia. of Part To Be Held "D"	Height "A" Ref.	Length "B"	Hole Dia. "C"	"E"	"F" Ref
V-1000	1/4 (6.4)	19/64 (7.5)	1/2 (12.7)	3/32 (2.4)	3/4 (19.1)	1/2 (12.7)
V-1001	5/16 (7.9)	23/64 (9.1)				33/64 (13.1)
V-1002	3/8 (9.5)	13/32 (10.3)				21/32 (16.7)
V-1003	7/16 (11.1)	29/64 (11.5)				23/32 (18.2)
V-1004	1/2 (12.7)	1/2 (12.7)				53/64 (21.0)
V-1005	9/16 (14.3)	39/64 (15.5)				55/64 (21.8)
V-1006	5/8 (15.9)	5/8 (15.9)				57/64 (22.6)
V-1007	11/16 (17.5)	13/16 (20.6)				1-5/64 (27.4)
V-1008	3/4 (19.1)	25/32 (19.8)				1-1/8 (28.6)
V-1009	7/8 (22.2)	29/32 (23.0)				1-1/4 (31.8)
V-1010	1 (25.4)	63/64 (25.0)	1-3/4 (44.5)	1-27/64 (36.1)		
V-1011	1-3/8 (34.9)	1-11/32 (34.1)	1-1/2 (38.1)	2-39/64 (66.3)		
V-1024	1-1/2 (38.1)	1-13/16 (46.0)	1 (25.4)	1/2 (12.7)	1-3/32 (27.8)	
V-1030	2-1/4 to 2-3/4 (57.2-69.9)	2-7/16 (61.9)	5/32 (4.0)	1/2 (12.7)	1-3/32 (27.8)	
MC-2	7/8 (22.2)	1-3/8 (34.9)	1 (25.4)	5/32 (4.0)	1/2 (12.7)	1-3/32 (27.8)

COMPONENT CLIP, MOULDED (VM)



- Smooth edges protect components from wear and abrasion
- Mounts securely with screws
- Legs prevent shifting and tipping
- Material: Glass filled nylon, RMS-37
- Colour: Black
- Standard Pack. 100 per bag



This style on VM-1030 only

Part #	Dia To Be Held "D"	"A" Typ	"B"	"C"	"E"	"F" Typ
WM-1002	3/8 (9.5)	.44 (11.2)	50 (12.7)	.110 (2.8)	SINGLE HOLE IN CENTRE	.54 (13.7)
VM-1004	1/2 (12.7)	.52 (13.2)				.75 (19.1)
VM-1007	11/16 (17.5)	.78 (19.8)				.82 (20.8)
VM-1008	3/4 (19.1)	.97 (24.6)	.150 (3.8)	.750 (19.1)	.98 (24.9)	
VM-1011	1-3/8 (34.9)	1.51 (38.4)			1.37 (34.8)	
VM-1024	1-1/2 (38.1)	1.67 (42.4)			1.50 (38.1)	
VM-1030	2-1/4 (57.2)	2.50 (63.5)			3.00 (76.2)	