

JUXTA W Series

General Specifications

Model WH2A/V
Isolator

JUXTA

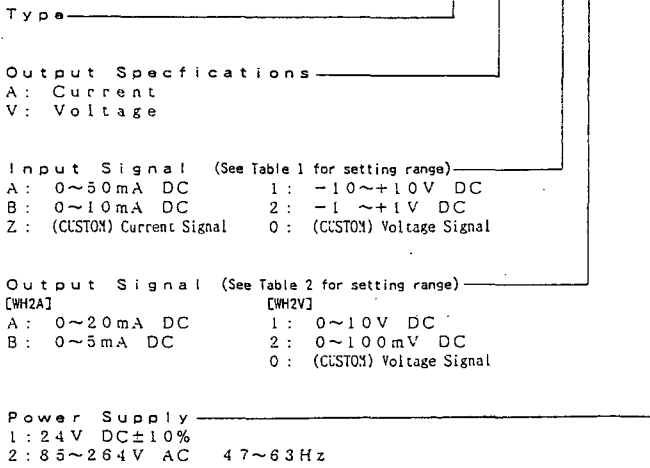
1. GENERAL

Model WH2A/V Isolator, μ P built-in type, converts DC current or voltage signals into various current or voltage signals. Change of input/output ranges, adjustment of zero span and monitoring of input/output can easily be made in the field by handy terminal.

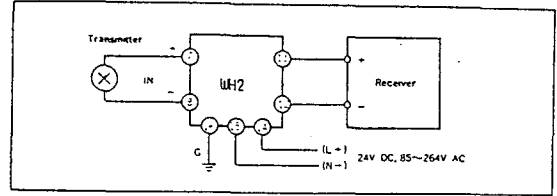
2. SPECIFICATIONS

Input & Output	
Input signal	DC voltage or current signal See Table 1
Input resistance	[current input] 100 Ω See Table 1 [voltage input] 1M Ω (when power on), 100K Ω (when power off)
Permissible applied input	See Table 1
Output signal	DC voltage or current signal See Table 2
Zero point adjust range	$\pm 1\%$ of span (input adjust), $\pm 10\%$ of span (output correction)
Span adjust range	$\pm 1\%$ of span (input adjust) $\pm 10\%$ of span (output correction)
Standard Performance	
Accuracy rating	$\pm 0.1\%$ of span
Response speed	150ms 63% response (10~90%)
Insulation resistance	More than 100M Ω (at 500V DC) between input~output~power supply mutually
Withstand voltage	1500V AC/1 minute between input~output, input~power supply 500V AC/1 minute between output~power source (DC Drive) 1500V AC/1 minute between input~output~power supply~ground mutually (AC Drive)
Ambient temperature & humidity	Normal operating condition: 0~50 $^{\circ}$ C, 5~90%RH Operating limit: -10~60 $^{\circ}$ C, 5~95%RH Storing condition: -40~70 $^{\circ}$ C, 5~95%RH (no condensation)
Power supply voltage	85~264V AC, 47~63Hz, 24V DC $\pm 10\%$
Effect of power source voltage fluctuation	Less than $\pm 0.1\%$ of span per fluctuation of 85~264V AC or 24V DC $\pm 10\%$
Effect of ambient temperature change	Less than $\pm 0.2\%$ of span per change of 10 $^{\circ}$ C
Current dissipation	24V DC 92mA(WH2A-1), 60mA(WH2V-1)
Power dissipation	100V AC 11VA(WH2A-2), 7.5VA(WH2V-2)
Mounting & Dimension	
Material	ABS plastic case
Boards	Both sides glass-epoxy
Mounting method	Rack, wall or DIN rail
Connection method	M4-screw terminals
External dimension	72x48x127mm (HxWxD)
Weight	200g(DC Drive) 300g(AC Drive)
Accessories	
Tag number label ... 1	Range label ... 1
Mounting block 2	M4 mounting screw ...2

WH2□-□□-□* A



WIRING DIAGRAM



EXTERNAL DIMENSION

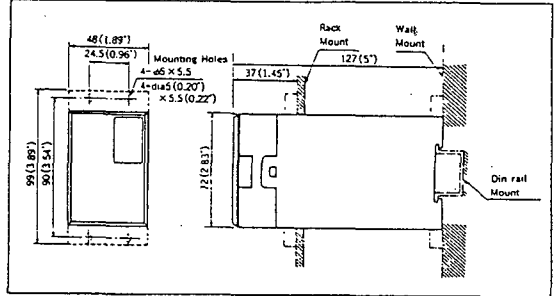


TABLE 1

Input Type	Input Range Setting	Permissible Applied Input	Input Resistance
1	-10~+10V DC, Span 1V min., Elevation -50~50%	±15V	
2	-1~+1V DC, Span 0.1V min., Elevation -50~50%	±15V	1kΩ (when power on)
0	-30~+30V DC, Span 3V min., Elevation -50~50%	±50V	100kΩ (when power off)
A	0~50mA DC, Span 10mA min., Elevation 0~50%	70mA	100Ω
B	0~10mA DC, Span 1mA min., Elevation 0~50%	70mA	100Ω
Z	0~5mA DC, Elevation 0~50% Span should be $R_i \times I_s \geq 1(V)$ 100% point should be $R_i \times I_{100} \leq 10(V)$	Current I (mA) when $R_i \times I^2 \leq 0.5(W)$	Specify by customer (satisfy conditions mentioned left)

R_i : Input resistance I_s : Input current span I : Permissible maximum input current
 I_{100} : 100% input current

TABLE 2

Output Type	Output Range Setting	Output Resistance	Permissible Load Resistance
1	0~10V DC, Span 1V min., Elevation 0~50% where accuracy limit exists in span less than 2V	1Ω maximum	10kΩ minimum
2	0~100mV DC, Span 10mV min., Elevation 0~50% where accuracy limit exists in span less than 20mV	100Ω maximum	250kΩ minimum
0	*manufacture available range -10~+10V DC, Span 10mV min., Elevation -50~50%	1Ω or 100Ω maximum	10kΩ or 250kΩ minimum
A	0~5mA DC, Span 1mA min., Elevation 0~50% where accuracy limit exists in span less than 2mA	500kΩ minimum	(15/OUT ₁₀₀)Ω max.
B	0~20mA DC, Span 4mA min., Elevation 0~50% where accuracy limit exists in span less than 8mA		

Subject to change without notice for grade up quality and performance