



512Kx32 SRAM MULTI-CHIP PACKAGE

FEATURES

- Access Times of 12, 15, 17, 20, ns
- Packaging
 - 16mm x 18mm, 143 PBGA
- Organized as 512Kx32, User Configurable as 1Mx16 or 2Mx8
- Commercial, Industrial and Military Temperature Ranges
- TTL Compatible Inputs and Outputs
- 5V Power Supply
- Low Power CMOS

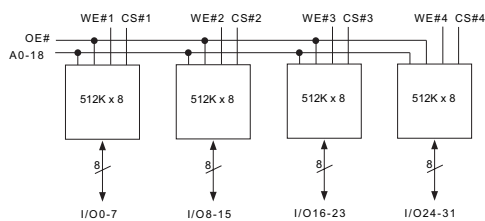
This product is subject to change without notice.

PIN CONFIGURATION FOR WEDPS512K32-XBX

TOP VIEW

	1	2	3	4	5	6	7	8	9	10	11	12
A	-	A2	A1	A0	GND	GND	V _{CC}	V _{CC}	A18	A17	A16	GND
B	CS#2	A3	A4	D14	D15	NC	CS#4	D24	D25	OE#	A15	NC
C	D9	D8	NC	D12	D13	GND	V _{CC}	D26	D27	WE#4	D31	D30
D	D10	D11	GND	GND	GND	GND	V _{CC}	V _{CC}	V _{CC}	V _{CC}	D28	D29
E	WE#2	GND	GND	GND	GND	GND	V _{CC}	V _{CC}	V _{CC}	V _{CC}	V _{CC}	NC
F	GND	GND	GND	GND	GND	GND	V _{CC}	V _{CC}	V _{CC}	V _{CC}	V _{CC}	V _{CC}
G	V _{CC}	V _{CC}	V _{CC}	V _{CC}	V _{CC}	V _{CC}	GND	GND	GND	GND	GND	GND
H	CS#1	V _{CC}	V _{CC}	V _{CC}	V _{CC}	V _{CC}	GND	GND	GND	GND	GND	NC
J	D1	D0	V _{CC}	V _{CC}	V _{CC}	V _{CC}	GND	GND	GND	GND	D23	D22
K	D2	D3	NC	D7	D5	V _{CC}	GND	D17	D16	CS#3	D20	D21
L	WE#1	A6	A5	D6	D4	NC	WE#3	D19	D18	A14	A13	NC
M	GND	A7	A8	A9	V _{CC}	V _{CC}	GND	GND	A10	A11	A12	V _{CC}

BLOCK DIAGRAM



PIN DESCRIPTION

I/O0-31	Data Inputs/Outputs
A0-18	Address Inputs
WE#1-4	Write Enables
CS#1-4	Chip Selects
OE#	Output Enable
V _{CC}	Power Supply
GND	Ground
NC	Not Connected

White Electronic Designs Corp. reserves the right to change products or specifications without notice.



ABSOLUTE MAXIMUM RATINGS

Parameter	Symbol	Min	Max	Unit
Operating Temperature	T _A	-55	+125	°C
Storage Temperature	T _{STG}	-65	+150	°C
Signal Voltage Relative to GND	V _G	-0.5	V _{CC} +0.5	V
Junction Temperature	T _J		150	°C
Supply Voltage	V _{CC}	-0.5	7.0	V

TRUTH TABLE

CS	OE	WE	Mode	Data I/O	Power
H	X	X	Standby	High Z	Standby
L	L	H	Read	Data Out	Active
L	H	H	Out Disable	High Z	Active
L	X	L	Write	Data In	Active

RECOMMENDED OPERATING CONDITIONS

Parameter	Symbol	Min	Max	Unit
Supply Voltage	V _{CC}	4.5	5.5	V
Input High Voltage	V _{IH}	2.2	V _{CC} + 0.3	V
Input Low Voltage	V _{IL}	-0.5	+0.8	V
Operating Temp (Mil)	T _A	-55	+125	°C

BGA THERMAL RESISTANCE

Description	Symbol	Max	Unit	Notes
Junction to Ambient (No Airflow)	Theta JA	16.5	°C/W	1
Junction to Ball	Theta JB	11.3	°C/W	1
Junction to Case (Top)	Theta JC	9.8	°C/W	1

NOTE: Refer to Application Note "PBGA Thermal Resistance Correlation" at www.whiteedc.com in the application notes section for modeling conditions.

CAPACITANCE

(T_A = +25°C)

Parameter	Symbol	Conditions	Max	Unit
OE# capacitance	C _{OE}	V _{IN} = 0 V, f = 1.0 MHz	30	pF
WE#1-4 capacitance	C _{WE}	V _{IN} = 0 V, f = 1.0 MHz	10	pF
CS#1-4 capacitance	C _{CS}	V _{IN} = 0 V, f = 1.0 MHz	10	pF
Data I/O capacitance	C _{I/O}	V _{IO} = 0 V, f = 1.0 MHz	10	pF
Address input capacitance	C _{AD}	V _{IN} = 0 V, f = 1.0 MHz	30	pF

This parameter is guaranteed by design but not tested.

DC CHARACTERISTICS

(V_{CC} = 5.0V, V_{SS} = 0V, T_A = -55°C to +125°C)

Parameter	Symbol	Conditions	Min	Max	Units
Input Leakage Current	I _{LI}	V _{CC} = 5.5, V _{IN} = GND to V _{CC}		10	µA
Output Leakage Current	I _{LO}	CS# = V _{IH} , OE# = V _{IH} , V _{OUT} = GND to V _{CC}		10	µA
Operating Supply Current x 32 Mode	I _{CC} x 32	CS# = V _{IL} , OE# = V _{IH} , f = 5MHz, V _{CC} = 5.5		660	mA
Standby Current	I _{SB}	CS# = V _{IH} , OE# = V _{IH} , f = 5MHz, V _{CC} = 5.5		80	mA
Output Low Voltage	V _{OL}	I _{OL} = 8mA		0.4	V
Output High Voltage	V _{OH}	I _{OH} = -4.0mA	2.4		V

NOTE: DC test conditions: V_{IH} = V_{CC} - 0.3V, V_{IL} = 0.3V



AC CHARACTERISTICS

(V_{CC} = 5.0V, V_{SS} = 0V, T_A = -55°C to +125°C)

Parameter	Symbol	-12		-15		-17		-20		Units
		Min	Max	Min	Max	Min	Max	Min	Max	
Read Cycle										
Read Cycle Time	t _{RC}	12		15		17		20		ns
Address Access Time	t _{AA}		12		15		17		20	ns
Output Hold from Address Change	t _{OH}	0		0		0		0		ns
Chip Select Access Time	t _{ACS}		12		15		17		20	ns
Output Enable to Output Valid	t _{OE}		7		8		9		10	ns
Chip Select to Output in Low Z	t _{CLZ} ¹	1		2		2		2		ns
Output Enable to Output in Low Z	t _{OLZ} ¹	0		0		0		0		ns
Chip Disable to Output in High Z	t _{CHZ} ¹		7		12		12		12	ns
Output Disable to Output in High Z	t _{OHZ} ¹		7		12		12		12	ns

1. This parameter is guaranteed by design but not tested.

AC CHARACTERISTICS

(V_{CC} = 5.0V, V_{SS} = 0V, T_A = -55°C to +125°C)

Parameter	Symbol	-12		-15		-17		-20		Units
		Min	Max	Min	Max	Min	Max	Min	Max	
Write Cycle										
Write Cycle Time	t _{WC}	12		15		17		20		ns
Chip Select to End of Write	t _{CW}	10		13		15		15		ns
Address Valid to End of Write	t _{AW}	10		13		15		15		ns
Data Valid to End of Write	t _{DW}	8		10		11		12		ns
Write Pulse Width	t _{WP}	10		13		15		15		ns
Address Setup Time	t _{AS}	0		2		2		2		ns
Address Hold Time	t _{AH}	0		0		0		0		ns
Output Active from End of Write	t _{OW1}	2		2		2		3		ns
Write Enable to Output in High Z	t _{WHZ1}		7		8		9		11	ns
Data Hold Time	t _{DH}	0		0		0		0		

1. This parameter is guaranteed by design but not tested.

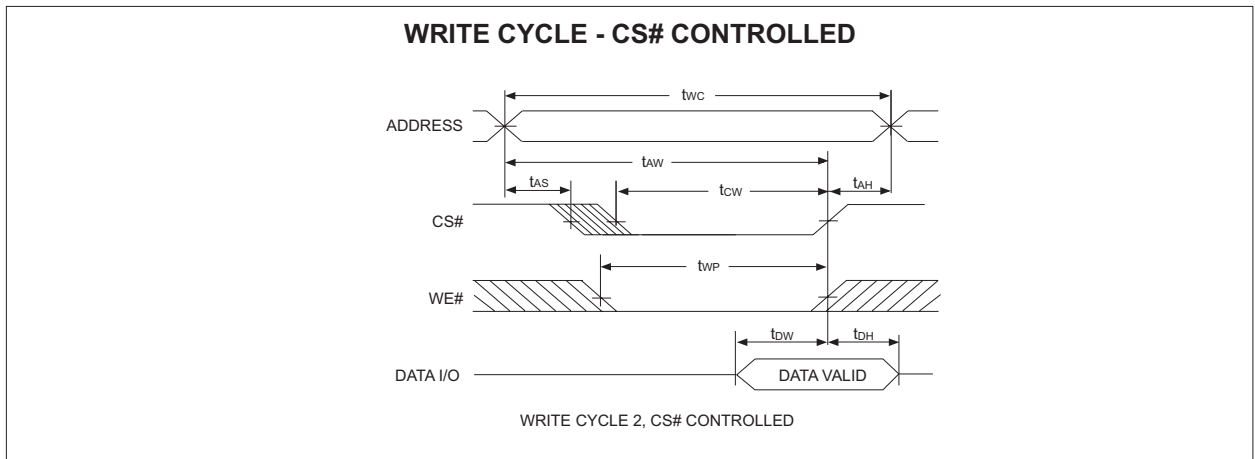
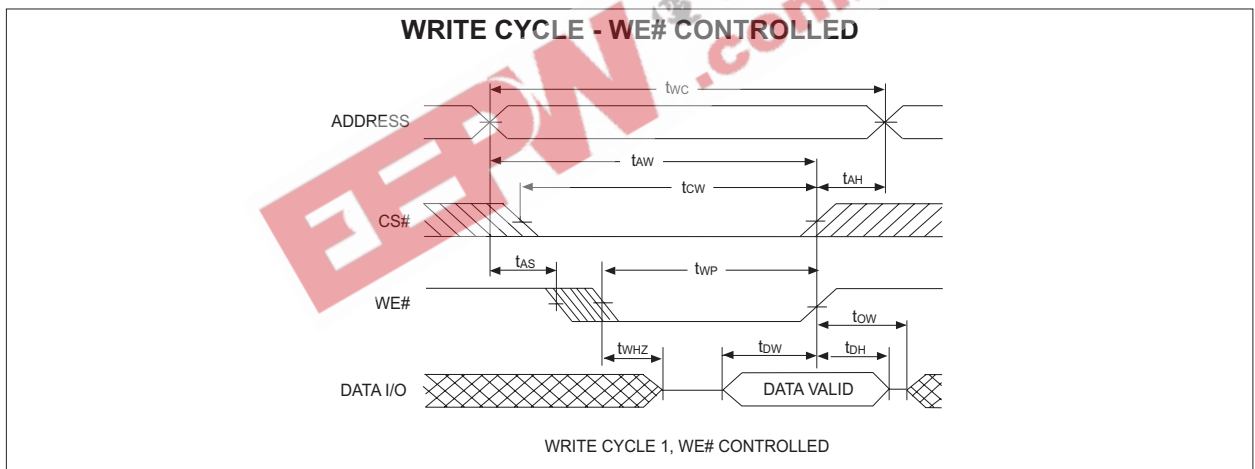
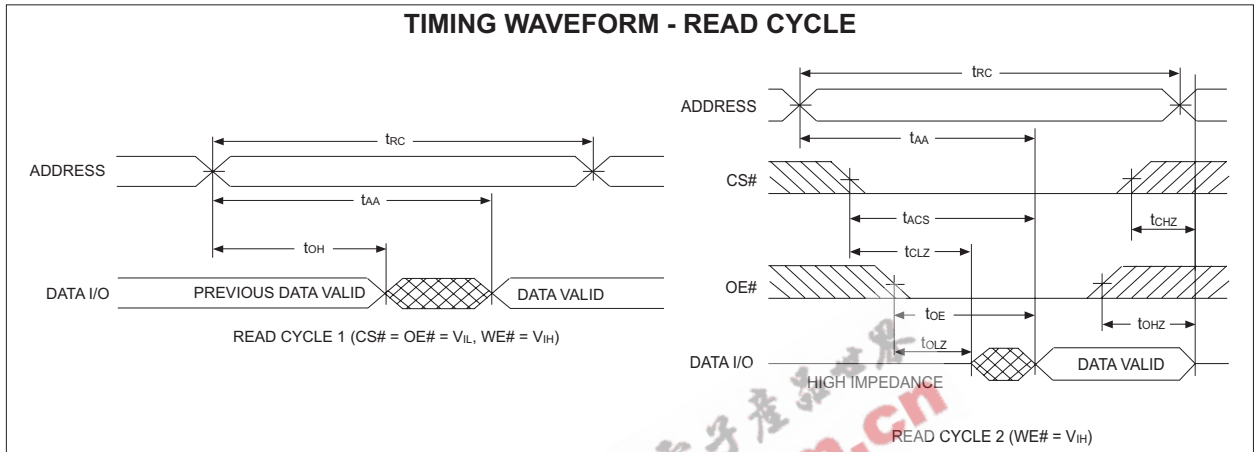
AC TEST CIRCUIT

AC TEST CONDITIONS

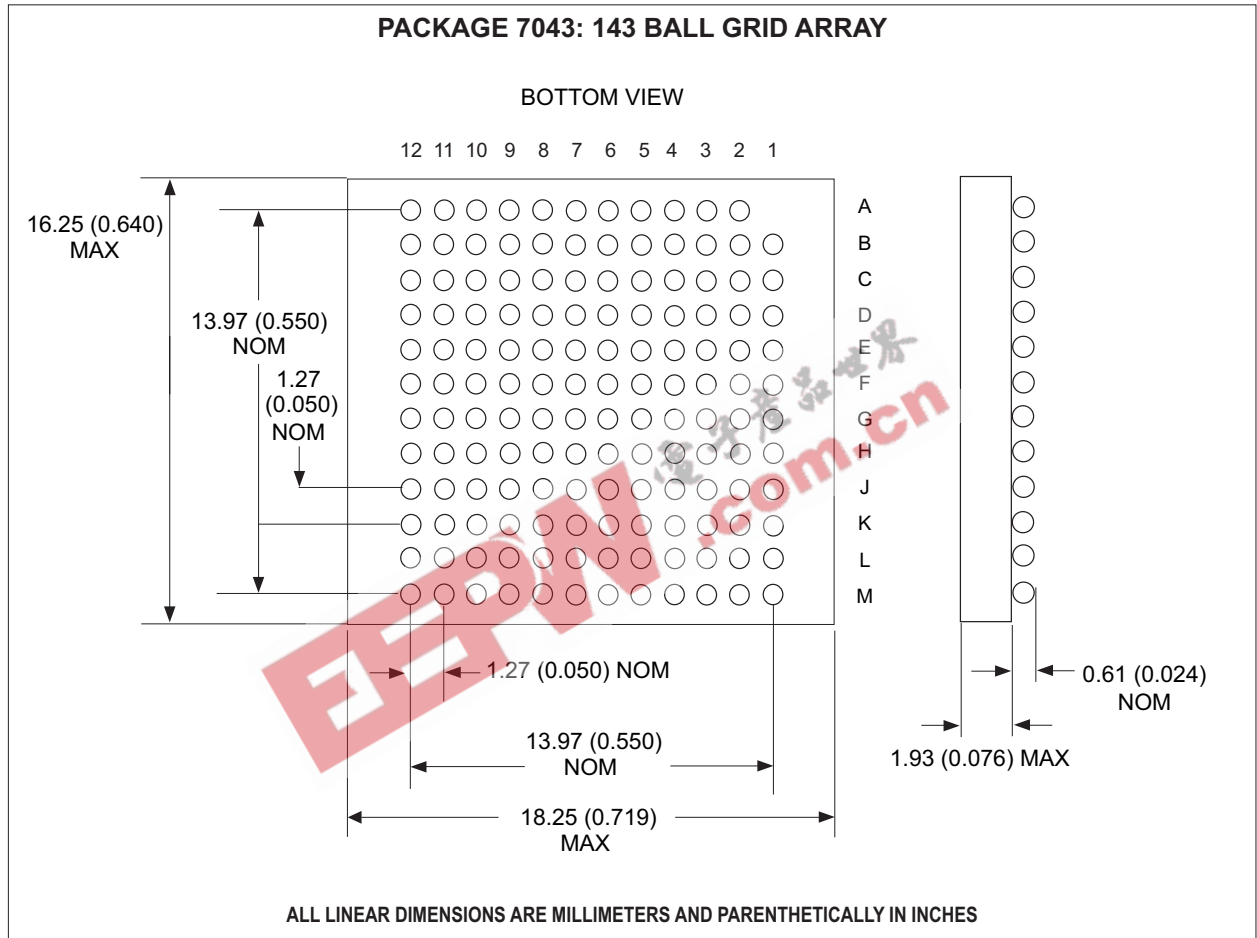
Parameter	Typ	Unit
Input Pulse Levels	V _{IL} = 0, V _{IH} = 3.0	V
Input Rise and Fall	5	ns
Input and Output Reference Level	1.5	V
Output Timing Reference Level	1.5	V

Notes:
V_Z is programmable from -2V to +7V.
I_{OL} & I_{OH} programmable from 0 to 16mA.
Tester Impedance Z₀ = 75 Ω.
V_Z is typically the midpoint of V_{OH} and V_{OL}.
I_{OL} & I_{OH} are adjusted to simulate a typical resistive load circuit.
ATE tester includes jig capacitance.

White Electronic Designs Corp. reserves the right to change products or specifications without notice.

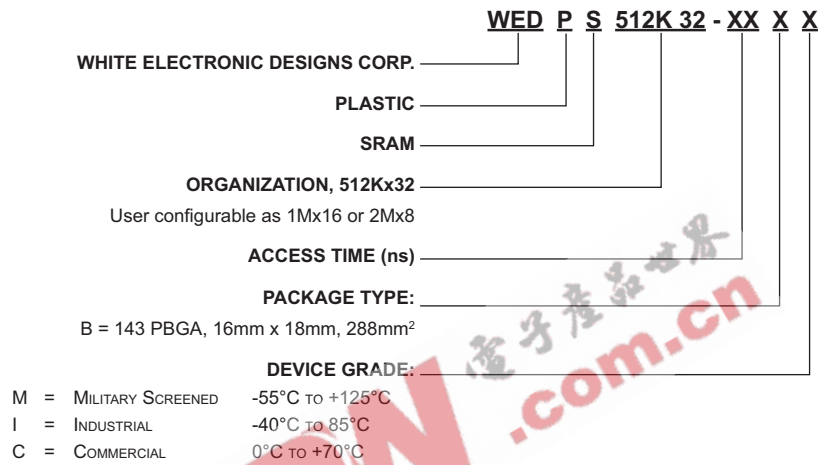


White Electronic Designs Corp. reserves the right to change products or specifications without notice.





ORDERING INFORMATION



EPN.com.cn 电子产品世界



Document Title			
512K x 32 SRAM Multi-Chip Package			
Revision History			
Rev #	History	ReleaseDate	Status
Rev 0	Initial Release	March 2002	Advanced
Rev 1	Switch Rows and Columns header position (Pg. 1)	March 2002	Advanced
Rev 2	Switch Rows and Columns header position (Pg. 1)	May 2002	Advanced
Rev 3	Change mechanical outline to more accurate design (Pg. 1, 5)	May 2002	Advanced
Rev 4	Remove references to 25-55ns speed grades (Pg. 1, 2, 3)	August 2002	Advanced
Rev 5	Changes (Pg. 1, 2) 1.1 Add Thermal Resistance Table 1.2 Change product status to Final	January 2003	Final
Rev 6	Changes (Pg. 1, 5, 7) 1.1 Change package body height to 1.93mm Max 1.2 Add ball pitch (1.27mm) to package dimension	November 2003	Final

EEPW.com.cn 电子产品世界