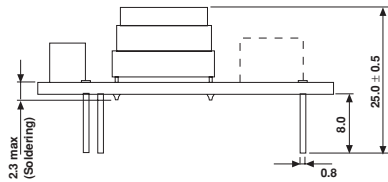
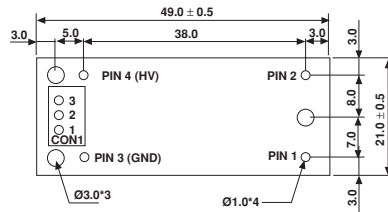




Inverter for CCFL Lamp

PART NUMBER: WICCFL1



The non-specified tolerance of dimension is ± 0.3mm

PIN ASSIGNMENT

Input DC	5V ± 10%
No Load Operating Volt	650Vrms
Input Current	0.45A max
Frequency	37.0KHz ± 5%
Operating Temp	- 10°C ~ 80°C
Operating Temp	- 20°C ~ 85°C

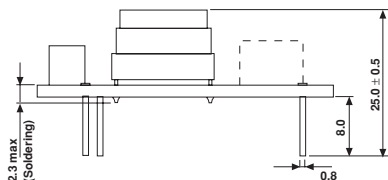
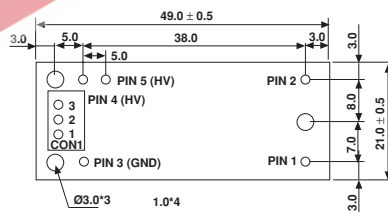
INPUT CONNECTOR

PIN NUMBER	FUNCTION
PIN 1	V +
PIN 2	GND

OUTPUT(CON1) CONNECTOR 2532-03

PIN NUMBER	FUNCTION
1	GND
2	NC
3	HV

PART NUMBER: WICCFL2



The non-specified tolerance of dimension is ± 0.3mm

PIN ASSIGNMENT

Input DC	12V ± 10%
No Load Operating Volt	750Vrms
Input Current	0.30A max
Frequency	37.0KHz ± 5%
Operating Temp	- 10°C ~ 80°C
Operating Temp	- 20°C ~ 85°C

INPUT CONNECTOR

PIN NUMBER	FUNCTION
PIN 1	VIN
PIN 2	GND

OUTPUT(CON1) CONNECTOR 2532-03

PIN NUMBER	FUNCTION
1	GND
2	NC
3	HV

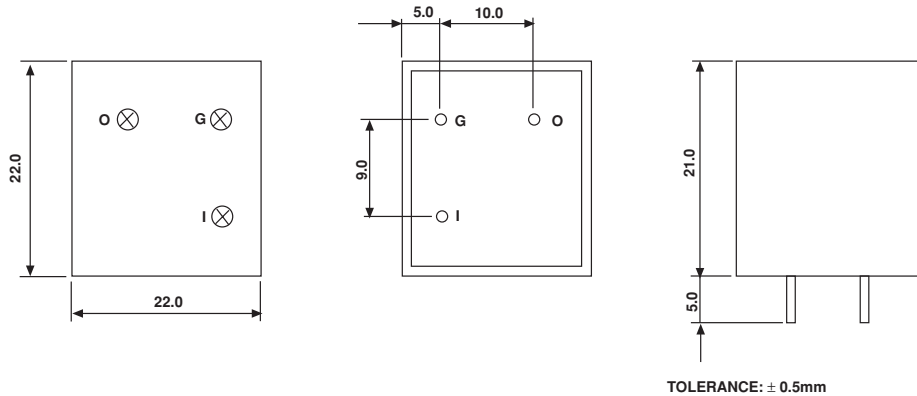
Inverter for CCFL Lamp

Vishay

Inverter for CCFL Lamp



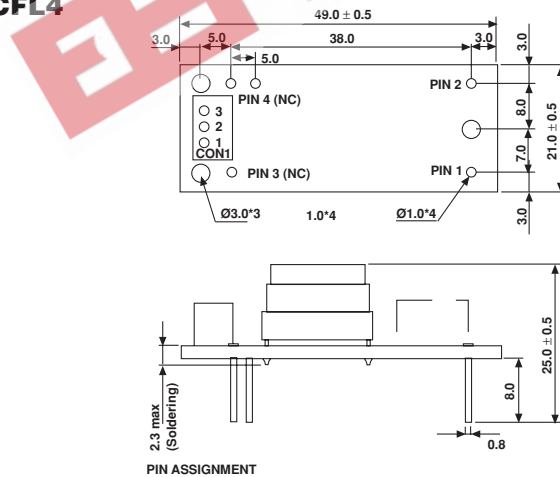
PART NUMBER: WICCFL3



Input DC	5V ± 10%
No Load Operating Volt	750Vrms
Input Current	0.32A max
Frequency	45.0KHz ± 5%
Operating Temp	- 10°C ~ 80°C
Operating Temp	- 20°C ~ 85°C

PIN ASSIGNMENT	
PIN NUMBER	FUNCTION
1	+ VIN
2	GND
3	lout1
4	lout2
5	lout-return

PART NUMBER: WICCFL4



Input DC	5V ± 10%
No Load Operating Volt	950Vrms
Input Current	0.35A max
Frequency	38.0KHz ± 5%
Operating Temp	- 10°C ~ 80°C
Operating Temp	- 20°C ~ 85°C

INPUT CONNECTOR	
PIN NUMBER	FUNCTION
PIN 1	VIN
PIN 2	GND

OUTPUT(CON1) CONNECTOR 2532-03	
PIN NUMBER	FUNCTION
1	GND
2	NC
3	X

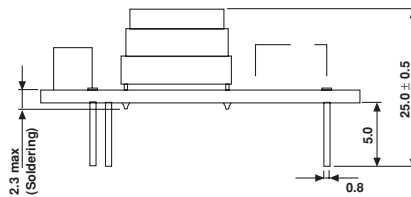
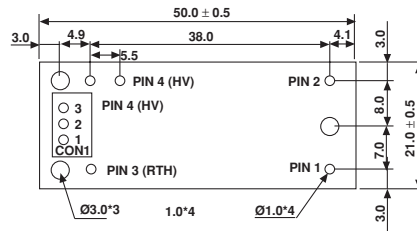


Inverter for CCFL Lamp

Vishay

Inverter for CCFL Lamp

PART NUMBER: WICCFL5



PIN ASSIGNMENT

Input DC	12V ± 10%
No Load Operating Volt	850Vrms
Input Current	0.35A max
Frequency	38.0KHz ± 5%
Operating Temp	- 10°C ~ 80°C
Operating Temp	- 20°C ~ 85°C

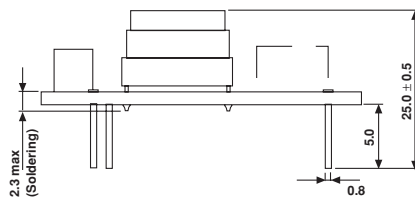
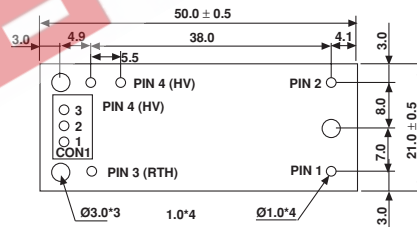
INPUT CONNECTOR

PIN NUMBER	FUNCTION
PIN 1	VIN
PIN 2	GND

OUTPUT(CON1) CONNECTOR 2532-03

PIN NUMBER	FUNCTION
1	RTH
2	NC
3	HV

PART NUMBER: WICCFL6



PIN ASSIGNMENT

Input DC	5V ± 10%
No Load Operating Volt	1000Vrms
Input Current	0.41A max
Frequency	34.0KHz ± 5%
Operating Temp	- 10°C ~ 80°C
Operating Temp	- 20°C ~ 85°C

INPUT CONNECTOR

PIN NUMBER	FUNCTION
PIN 1	VIN
PIN 2	GND

OUTPUT(CON1) CONNECTOR 2532-03

PIN NUMBER	FUNCTION
1	RTH
2	NC
3	HV

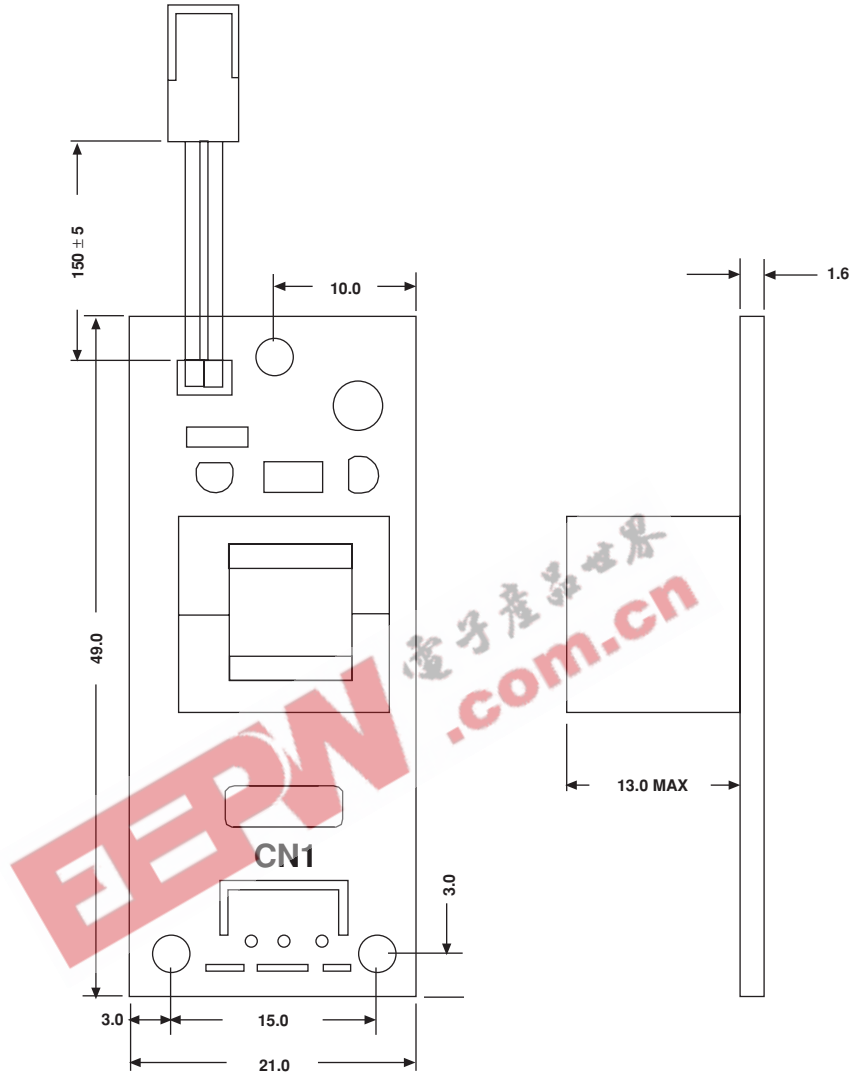
Inverter for CCFL Lamp



Vishay

Inverter for CCFL Lamp

PART NUMBER: WICCFL8



Input DC	24V ± 10%
No Load Operating Volt	940Vrms
Input Current	0.09A max
Frequency	56.0KHz ± 5%
Operating Temp	- 10°C ~ 80°C
Operating Temp	- 20°C ~ 85°C



Disclaimer

All product specifications and data are subject to change without notice.

Vishay Intertechnology, Inc., its affiliates, agents, and employees, and all persons acting on its or their behalf (collectively, "Vishay"), disclaim any and all liability for any errors, inaccuracies or incompleteness contained herein or in any other disclosure relating to any product.

Vishay disclaims any and all liability arising out of the use or application of any product described herein or of any information provided herein to the maximum extent permitted by law. The product specifications do not expand or otherwise modify Vishay's terms and conditions of purchase, including but not limited to the warranty expressed therein, which apply to these products.

No license, express or implied, by estoppel or otherwise, to any intellectual property rights is granted by this document or by any conduct of Vishay.

The products shown herein are not designed for use in medical, life-saving, or life-sustaining applications unless otherwise expressly indicated. Customers using or selling Vishay products not expressly indicated for use in such applications do so entirely at their own risk and agree to fully indemnify Vishay for any damages arising or resulting from such use or sale. Please contact authorized Vishay personnel to obtain written terms and conditions regarding products designed for such applications.

Product names and markings noted herein may be trademarks of their respective owners.